

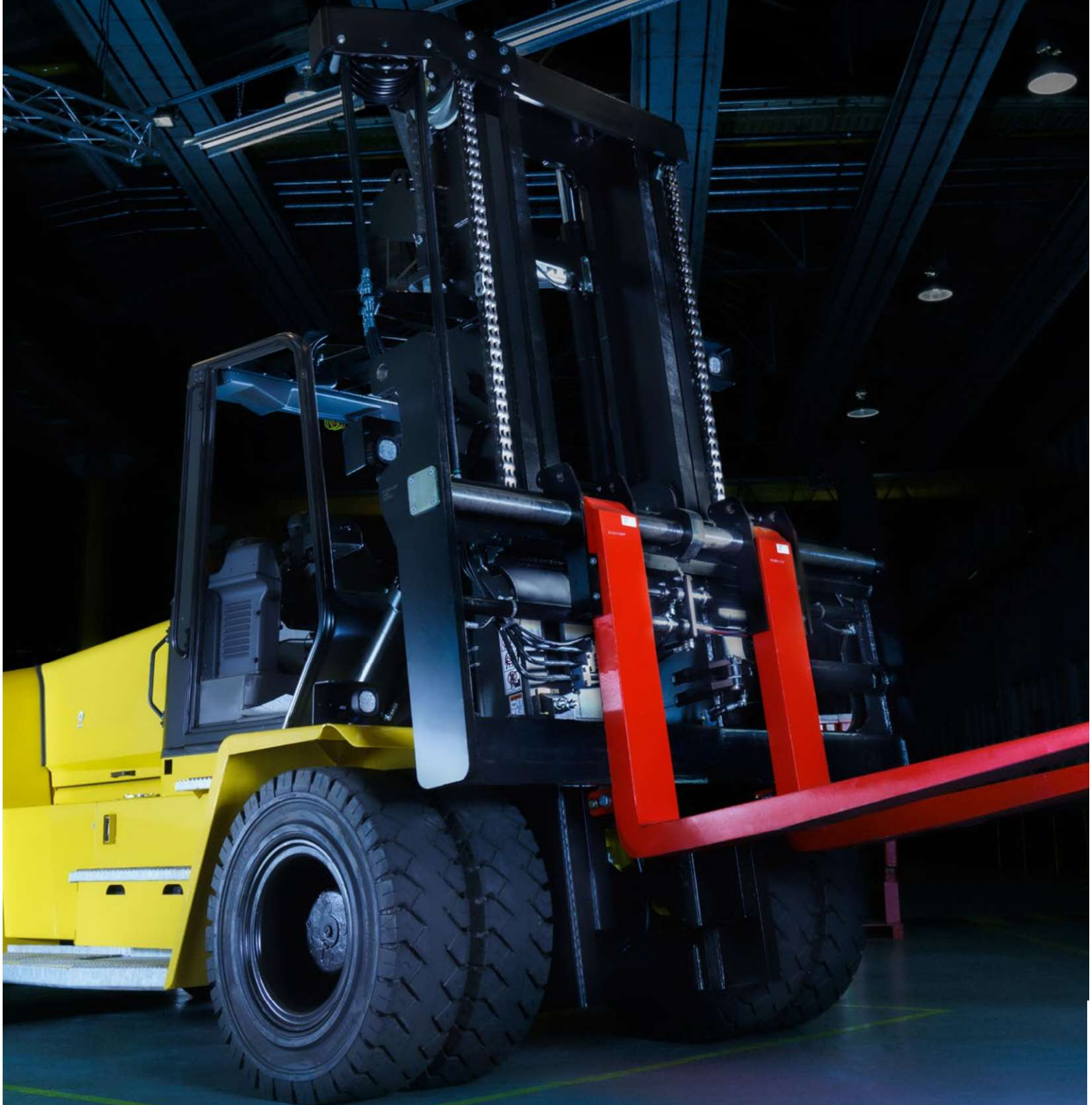


# Rexnord Extreme Performance Leaf Chain Catalog

Metric



# Rexord Extreme Performance Leaf Chain for the Most Demanding Applications







# Introduction to Rexnord Extreme Performance Portfolio

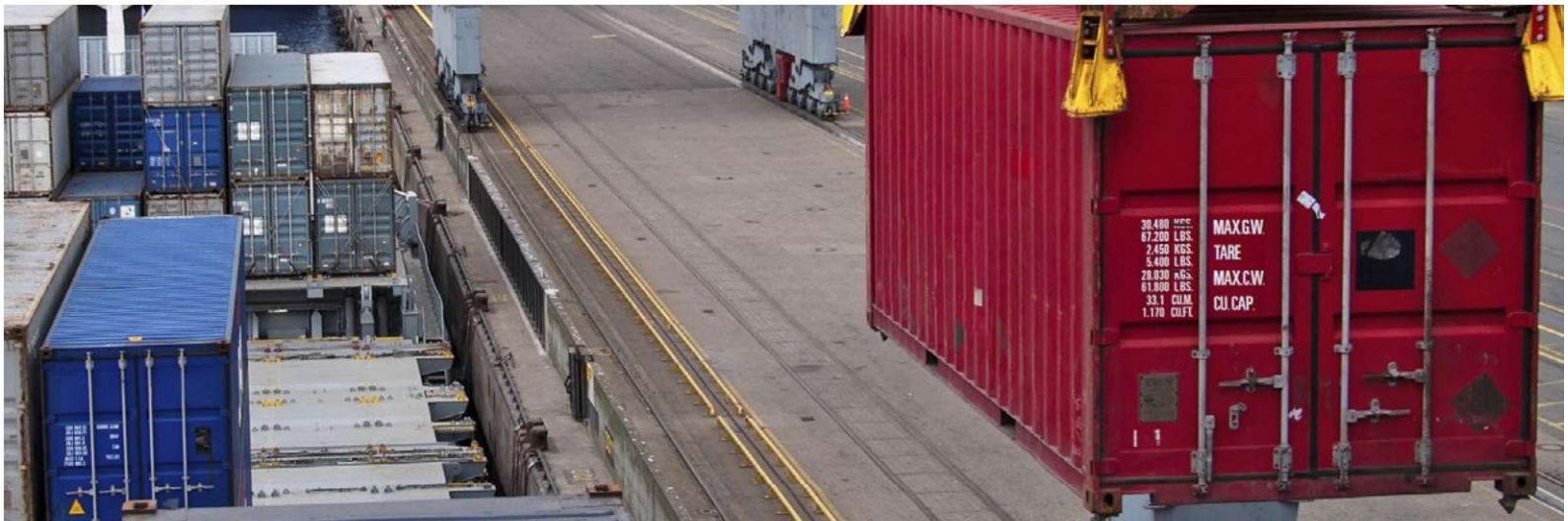
**Increase market demands for extreme performance chain driven Rexnord to develop a product portfolio suitable for heavy loading capacities, high fatigue resistance and higher corrosion resistance:**

- RexAthletic Leaf Chain page 4
- RexHiPro Leaf Chain page 7
- RexWM Leaf Chain page 10
- RexProX Leaf Chain page 13
- Rexnord RexOil page 17
- Dimensions for Chain Anchor and Connecting Pins page 18

**Rexnord Extreme Performance Leaf Chain will deliver:**

- Improved wear resistance
- Increased chain joint loading capability
- Increased corrosion protection
- Extended service life time
- Improved dynamic and static safety





# Rexnord RexAthletic Leaf Chain

## Extreme Performance

Rexnord® RexAthletic® low-maintenance Leaf Chain is ideal in situations with limited maintenance and lubrication possibilities. The shot-peened chain components and the special long-life lubricant improve the wear and fatigue resistance of the chain.

### Long wear lifetime

The special long-life lubricant optimized by Rexnord extends the lubrication intervals significantly. This results in less downtime and a longer service life of the chain.

### High tensile strength

With its high tensile strength the Rexnord RexAthletic Leaf Chain is ideal for heavy loading applications in difficult conditions and in closed systems.

### Good corrosion protection

Even with minimum lubrication and under heavy loads the Rexnord RexAthletic Leaf Chain has a high wear resistance and a long wear life.

### Applications:

Material handling  
Forklift trucks  
Telescopic lift systems  
Machine tools

### Traceability with silver label

The silver colored label outer plates have a batch number for full and consistent traceability.

### CE marking

All Rexnord RexAthletic Leaf Chains have the CE marking because they fulfill the requirements of Machine Directive 2006/42/EC.

### Features

- Very good tribological characteristics
- Improve protection against stiff joints / links
- Dimensions in accordance with ISO and ANSI
- RexAthletic version available on request for all leaf chains in the AL Light, BL Heavy Series American Standard and F Series European Standard in accordance with ISO 4347

### Advantages

- Reduced need for maintenance and longer lubrication intervals
- High wear resistance even with minimum lubrication
- Long service life under heavy loads
- Batch number on silver colored plate for traceability
- Eco-friendly: reduced lubricant requirement
- Compatible replacement for all standard chains

### Lubrication

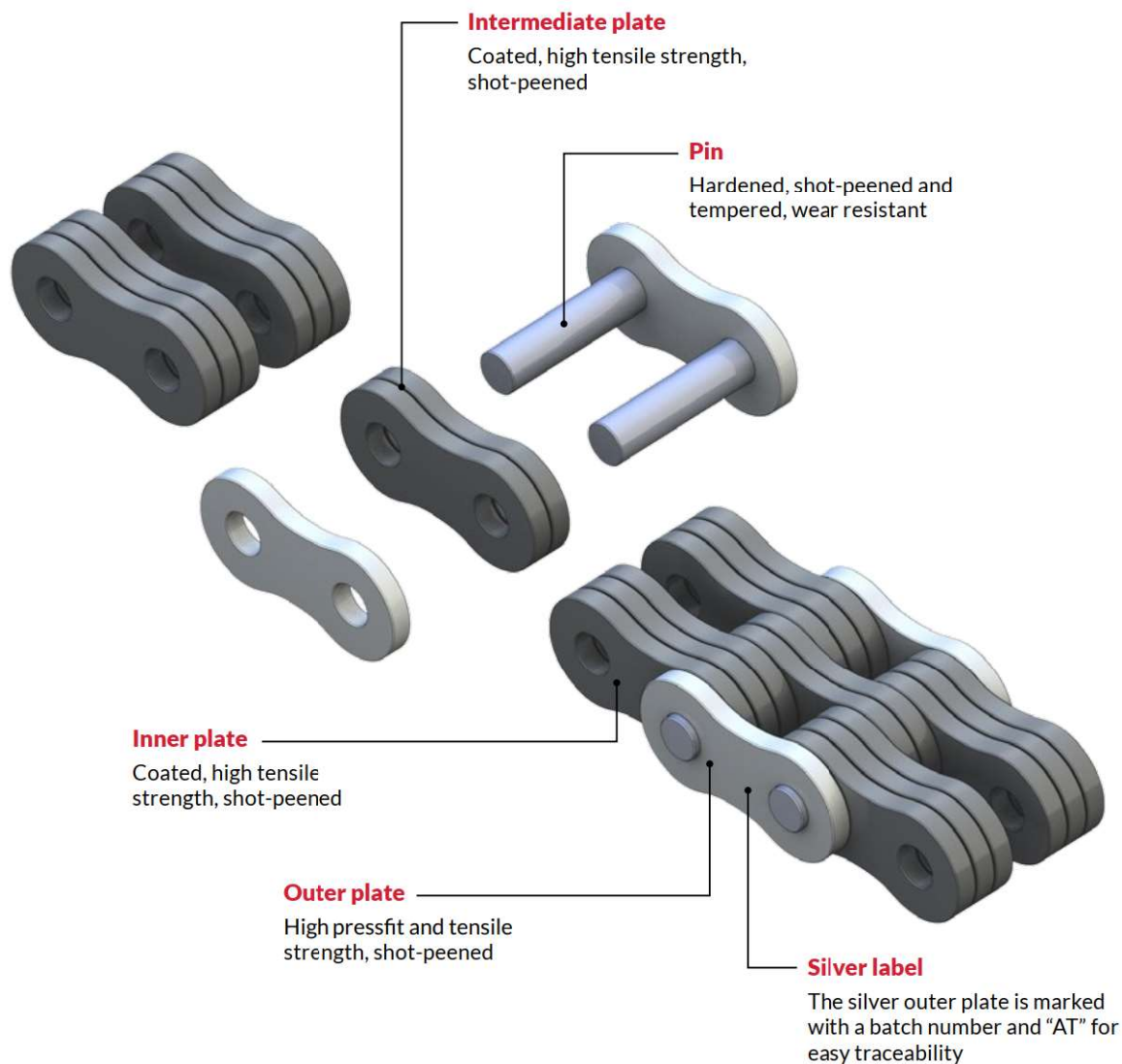
- Special long-life lubricant optimized by Rexnord
- Operating temperature from -15° C to +75° C
- No dripping of lubricant
- Water-resistant





# Rexnord RexAthletic Leaf Chain

Extreme Performance



## Loading capacity

- Special calibrated plate holes
- Shot-peened chain components
- High pre-loading



## Improved wear resistance

- Significantly longer relubrication intervals
- Special long-life lubricant optimized by Rexnord
- Longer service life time
- High operating reliability



## Eco-friendly

- No heavy metals; Teflon- and silicone-free
- Environmental management system conforms to DIN EN ISO 14001
- Free of chromium VI

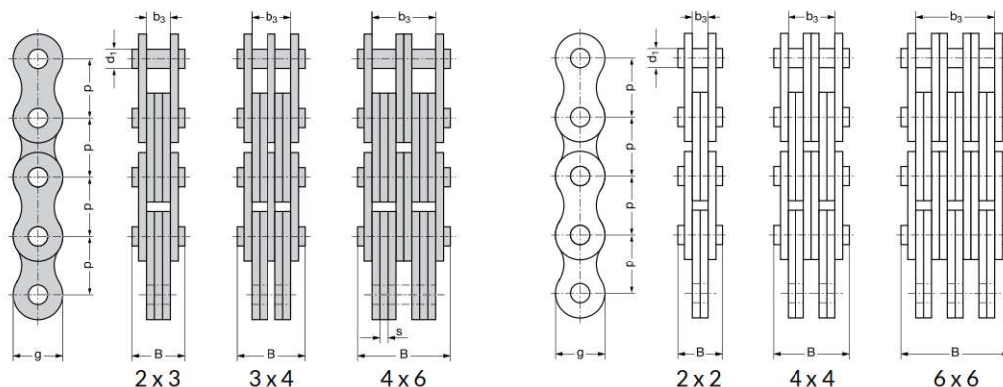
**CE** Rexnord fulfils the requirements of Machine Directive 2006/42/EC

Rexnord RexAthletic Leaf Chain is available in F Series European Standard, BL Heavy and AL Light Series American Standard. In the following table only the BL Heavy Series is shown. For F and AL Series, please contact Rexnord.

### BL Heavy Series American Standard – Rexnord RexAthletic Leaf Chain ISO 4347

Chain No.*	ISO chain number	Pitch		Lacing	Pin diameter	Plate depth	Plate thickness	Length over 100 pitches	Pin length	Width between outer plates	Bearing area	Required minimum tensile strength DIN /ISO	Rexnord minimum tensile strength	Fatigue strength	Weight
		p													
		Inch	mm												
					mm	mm	mm	mm	mm	mm	cm <sup>2</sup>	N	N	N	kg/m
BL 523	LH 1023	0.625	15.875	2 x 3	5.94	14.6	2.4	1596	15.0	7.4	0.43	33 400	40 000	10 500	1.1
BL 534	LH 1034			3 x 4					20.0	12.3	0.57	48 900	60 000	11 500	1.5
BL 544	LH 1044			4 x 4					22.5	14.7	0.57	66 700	80 000	12 000	1.8
BL 546	LH 1046			4 x 6					27.4	19.6	0.86	66 700	80 000	14 000	2.2
BL 566	LH 1066			6 x 6					32.3	24.5	0.86	100 100	120 000	15 200	2.6
BL 588	LH 1088			8 x 8					42.2	34.3	1.14	133 600	160 000	17 000	3.4
BL 622	LH 1222	0.75	19.05	2 x 2	7.92	17.9	3.1	1905	16.6	6.4	0.51	48 900	62 000	13 000	1.5
BL 623	LH 1223			2 x 3					20.0	9.6	0.74	48 900	62 000	16 300	1.8
BL 634	LH 1234			3 x 4					26.4	16.0	0.98	75 600	93 000	17 400	2.5
BL 644	LH 1244			4 x 4					29.5	19.2	0.98	97 900	124 000	19 000	2.9
BL 646	LH 1246			4 x 6					35.9	25.6	1.47	97 900	124 000	21 500	3.6
BL 666	LH 1266			6 x 6					42.5	32.0*	1.47	146 800	186 000	24 500	4.3
BL 822	LH 1622	1.00	25.4	2 x 2	9.53	23.6	4.0	2540	20.6	8.2	0.74	84 500	110 000	22 000	2.4
BL 823	LH 1623			2 x 3					24.8	12.3	1.14	84 500	110 000	30 000	3.0
BL 834	LH 1634			3 x 4					33.1	20.5	1.52	129 000	165 000	32 000	4.2
BL 844	LH 1644			4 x 4					37.3	24.7	1.52	169 000	220 000	33 500	4.8
BL 846	LH 1646			4 x 6					45.7	33.0	2.29	169 000	220 000	38 500	6.0
BL 866	LH 1666			6 x 6					54.1	41.3	2.29	253 600	330 000	41 850	7.2
BL 888	LH 1688	1.25	31.75	8 x 8	11.10	29.2	4.7	3179	70.8	57.9	2.97	338 000	440 000	45 000	9.6
BL 1023	LH 2023			2 x 3					28.9	14.4	1.56	115 600	164 000	47 500	4.4
BL 1034	LH 2034			3 x 4					38.8	24.1	2.09	182 400	246 000	50 000	6.2
BL 1044	LH 2044			4 x 4					43.7	29.0	2.09	231 200	328 000	55 000	7.0
BL 1046	LH 2046			4 x 6					53.5	38.4*	3.12	231 200	328 000	62 000	8.7
BL 1066	LH 2066			6 x 6					63.5	48.6*	3.12	347 000	492 000	69 000	10.5
BL 1088	LH 2088	1.50	38.1	8 x 8	12.70	34.4	5.5	3810	83.2	68.2*	4.17	462 400	656 000	74 000	13.9
BL 1223	LH 2423			2 x 3					33.6	16.8	2.1	151 200	200 000	64 000	6.0
BL 1234	LH 2434			3 x 4					45.5	28.0	2.8	224 600	300 000	68 000	8.3
BL 1244	LH 2444			3 x 4					51.2	33.6	2.8	302 400	400 000	72 000	9.5
BL 1246	LH 2446			4 x 6					62.7	44.8	4.2	302 400	400 000	82 000	11.8
BL 1266	LH 2466			6 x 6					74.5	56.0*	4.2	453 600	600 000	90 000	14.1
BL 1288	LH 2488	1.75	44.45	8 x 8	14.27	40.8	6.3	4445	97.8	78.4*	5.4	604 800	800 000	98 000	18.8
BL 1423	LH 2823			2 x 3					38.2	19.2	2.7	191 300	250 000		8.3
BL 1434	LH 2834			3 x 4					51.7	32.0	3.6	315 800	375 000		11.6
BL 1444	LH 2844			4 x 4					58.2	38.4	3.6	382 600	500 000		13.2
BL 1446	LH 2846			4 x 6					71.5	51.2	5.4	382 600	500 000		16.4
BL 1466	LH 2866			6 x 6					85.0	64.0*	5.4	578 000	750 000		19.7
BL 1488	LH 2888	2.00	50.8	8 x 8	17.46	47.9	7.0	5080	111.7	89.6*	7.2	765 200	1 000 000		25.9
BL 1623	LH 3223			2 x 3					42.1	21.3*	3.67	289 100	360 000		11.0
BL 1634	LH 3234			3 x 4					57.0	35.5*	4.89	440 400	540 000		15.4
BL 1644	LH 3244			4 x 4					63.8	42.6*	5.0	578 200	720 000		17.5
BL 1646	LH 3246			4 x 6					78.9	56.8*	7.33	578 200	720 000		21.8
BL 1666	LH 3266			6 x 6					95.0	73.7*	7.33	867 400	1 080 000		26.2
BL 1688	LH 3288			8 x 8					125.6	103.5*	9.78	1 156 400	1 440 000		34.9

\* Please contact Rexnord regarding precision of fit with ISO or ANSI anchors







# Rexnord RexHiPro Leaf Chain

## Extreme Performance

Rexnord RexHiPro® Leaf Chain has an excellent corrosion resistance and a very high, dynamic and long-term loading capacity. This chain can be used with water and aggressive liquids and still delivers an extremely long and continuous service.

### Applications:

Harbors & docks  
Industrial lifting equipment  
Outside application  
Food & beverage  
Automotive

### Excellent corrosion resistance

All the single chain components have a special anti-corrosion coating which makes the resistance intact for over 600 hours (salt spray test conform to ISO 9227). The Rexnord RexHiPro Leaf Chain is resistant to liquids from the automotive industry under VDA 621-412.

### High dynamic load

Compared to other coated chains the Rexnord RexHiPro Leaf Chain has a higher dynamic and static loading capacity. And no reduction of ultimate tensile strength.

### Traceability with silver label

The silver colored label outer plates have a batch for full and consistent traceability.

### CE marking

All Rexnord RexHiPro Leaf Chains have the CE marking because they fulfill the requirements of Machine Directive 2006/42/EC.



### Features

- Anti-corrosion coating for all chain components
- Tensile strength and fatigue resistance as for Rexnord RexPro Leaf Chain
- Dimensions in accordance with ISO and ANSI standards
- No process-related hydrogen embrittlement
- Does not contain chromium VI: conforms to Directive 2011/65/EU, RoHS:2011 and Directive 2000/53/EU

### Advantages

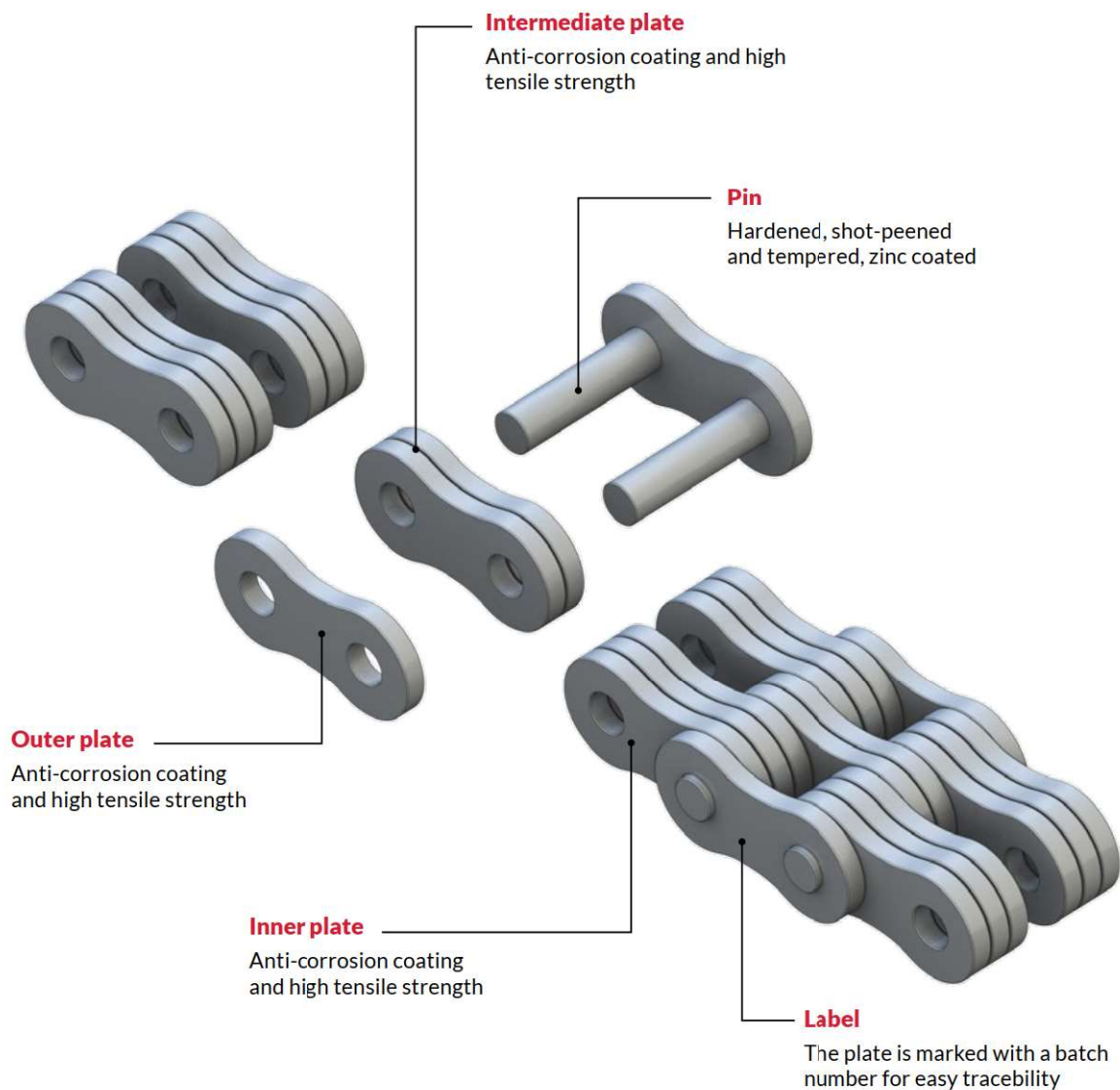
- Excellent resistance to corrosion and wear
- Corrosion resistance for more than 600 hours (salt spray test in accordance with ISO 9227)
- Resistant against liquids from the automotive industry in accordance with VDA 621-412

### Lubrication

- Improved protection with Rexnord RexPro Lubrication
- Lubrication with NSF H2 certification, RoHS:2011 compliant for electronics industry
- Operating temperature: - 30° C to + 130° C (special lubrication can expand range to - 40° C to + 250° C)
- Very good surface adhesion; remains drip-resistant even at high temperatures
- Lubrication without heavy metals, Teflon or silicone
- Other special lubricants are available (for example, lubricant with NSF H1 permit)

# Rexnord RexHiPro Leaf Chain

Extreme Performance



## Loading capacity and wear resistance

- High loading capacity, dynamic and static loads
- Service intervals as for RexPro Leaf Chains
- Long service life



## Damp corrosion resistance

- Outstanding corrosion resistance
- Suitable for high humidity and outside applications



## Eco-friendly

- NSF H2 certification
- RoHS:2011 conformity
- Free of chromium VI

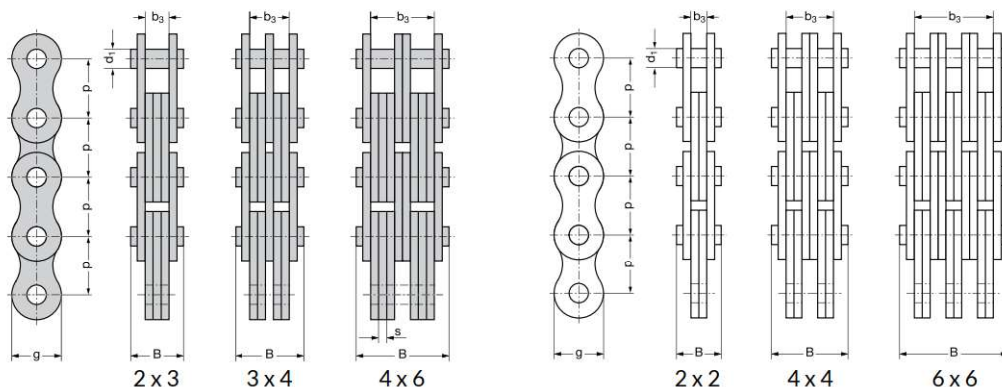


Rexnord RexHiPro Leaf Chain is available in F Series European Standard, BL Heavy and AL Light Series American Standard. In the following table only the BL Heavy Series is shown. For F and AL Series, please contact Rexnord.

### BL Heavy Series American Standard – Rexnord RexHiPro Leaf Chain ISO 4347

Chain No.*	ISO chain number	Pitch		Lacing	Pin diameter $d_1$	Plate depth g max.	Plate thickness s	Length over 100 pitches mm	Pin length B max.	Width between outer plates $b_3$ min.	Bearing area A	Required minimum tensile strength DIN / ISO FU	Rexnord minimum tensile strength FB	Fatigue strength FD	Weight q
		p													
		Inch	mm		mm	mm	mm	mm	mm	mm	cm <sup>2</sup>	N	N	N	kg/m
BL 523 LH 1023				2 x 3					15.0	7.4	0.43	33 400	40 000	10 500	1.1
BL 534 LH 1034				3 x 4					20.0	12.3	0.57	48 900	60 000	11 500	1.5
BL 544 LH 1044				4 x 4					22.5	14.7	0.57	66 700	80 000	12 000	1.8
BL 546 LH 1046				4 x 6					27.4	19.6	0.86	66 700	80 000	14 000	2.2
BL 566 LH 1066				6 x 6					32.3	24.5	0.86	100 100	120 000	15 200	2.6
BL 588 LH 1088				8 x 8					42.2	34.3	1.14	133 600	160 000	17 000	3.4
BL 622 LH 1222				2 x 2					16.6	6.4	0.51	48 900	62 000	13 000	1.5
BL 623 LH 1223				2 x 3					20.0	9.6	0.74	48 900	62 000	16 300	1.8
BL 634 LH 1234				3 x 4					26.4	16.0	0.98	75 600	93 000	17 400	2.5
BL 644 LH 1244				4 x 4					29.5	19.2	0.98	97 900	124 000	19 000	2.9
BL 646 LH 1246				4 x 6					35.9	25.6	1.47	97 900	124 000	21 500	3.6
BL 666 LH 1266				6 x 6					42.5	32.0*	1.47	146 800	186 000	24 500	4.3
BL 822 LH 1622				2 x 2					20.6	8.2	0.74	84 500	110 000	22 000	2.4
BL 823 LH 1623				2 x 3					24.8	12.3	1.14	84 500	110 000	30 000	3.0
BL 834 LH 1634				3 x 4					33.1	20.5	1.52	129 000	165 000	32 000	4.2
BL 844 LH 1644				4 x 4					37.3	24.7	1.52	169 000	220 000	33 500	4.8
BL 846 LH 1646				4 x 6					45.7	33.0	2.29	169 000	220 000	38 500	6.0
BL 866 LH 1666				6 x 6					54.1	41.3	2.29	253 600	330 000	41 850	7.2
BL 888 LH 1688				8 x 8					70.8	57.9	2.97	338 000	440 000	45 000	9.6
BL 1023 LH 2023				2 x 3					28.9	14.4	1.56	115 600	164 000	47 500	4.4
BL 1034 LH 2034				3 x 4					38.8	24.1	2.09	182 400	246 000	50 000	6.2
BL 1044 LH 2044				4 x 4					43.7	29.0	2.09	231 200	328 000	55 000	7.0
BL 1046 LH 2046				4 x 6					53.5	38.4*	3.12	231 200	328 000	62 000	8.7
BL 1066 LH 2066				6 x 6					63.5	48.6*	3.12	347 000	492 000	69 000	10.5
BL 1088 LH 2088				8 x 8					83.2	68.2*	4.17	462 400	656 000	74 000	13.9
BL 1223 LH 2423				2 x 3					33.6	16.8	2.1	151 200	200 000	64 000	6.0
BL 1234 LH 2434				3 x 4					45.5	28.0	2.8	224 600	300 000	68 000	8.3
BL 1244 LH 2444				3 x 4					51.2	33.6	2.8	302 400	400 000	72 000	9.5
BL 1246 LH 2446				4 x 6					62.7	44.8	4.2	302 400	400 000	82 000	11.8
BL 1266 LH 2466				6 x 6					74.5	56.0*	4.2	453 600	600 000	90 000	14.1
BL 1288 LH 2488				8 x 8					97.8	78.4*	5.4	604 800	800 000	98 000	18.8
BL 1423 LH 2823				2 x 3					38.2	19.2	2.7	191 300	250 000		8.3
BL 1434 LH 2834				3 x 4					51.7	32.0	3.6	315 800	375 000		11.6
BL 1444 LH 2844				4 x 4					58.2	38.4	3.6	382 600	500 000		13.2
BL 1446 LH 2846				4 x 6					71.5	51.2	5.4	382 600	500 000		16.4
BL 1466 LH 2866				6 x 6					85.0	64.0*	5.4	578 000	750 000		19.7
BL 1488 LH 2888				8 x 8					111.7	89.6*	7.2	765 200	1 000 000		25.9
BL 1623 LH 3223				2 x 3					42.1	21.3*	3.67	289 100	360 000		11.0
BL 1634 LH 3234				3 x 4					57.0	35.5*	4.89	440 400	540 000		15.4
BL 1644 LH 3244				4 x 4					63.8	42.6*	5.0	578 200	720 000		17.5
BL 1646 LH 3246				4 x 6					78.9	56.8*	7.33	578 200	720 000		21.8
BL 1666 LH 3266				6 x 6					95.0	73.7*	7.33	867 400	1 080 000		26.2
BL 1688 LH 3288				8 x 8					125.6	103.5*	9.78	1 156 400	1 440 000		34.9

\* Please contact Rexnord regarding precision of fit with ISO or ANSI anchors







# Rexnord RexWM Leaf Chain

## Extreme Performance

The Rexnord WM treatment is based on decades of experience. In combination with state of the art technologies we supply an outstanding product for all hoisting applications. Primary used in tooling machines (in German: 'Werkzeug Maschine') carrying the counter weights. The technology behind is still the first choice whenever highest reliability, smooth running and extreme long service lifetime is requested.

### Best results under permanent loading

In tooling machines and matchable applications is the highest challenge for a chain to withstand the special requirements of permanent loading and permanent movement without stress relief. The solution is the Rexnord WM treatment for large pitch leaf chains. The special WM treatment enables a quiet and smooth running without chatter marks.

### Machine tool RexWM version

The special bonderizing provides a maximum pressure absorptive power and at the same time a high level of oil absorption capacity. Under pressure, the synthetic solid lubricants and the bonderized surface are activated from the first chain loading and assure an excellent wear resistance. The result is a higher allowable bearing area pressure and much longer service lifetime with less or even no relubrication.

### Applications:

- Machine tools
- Material handling
- Special purpose machinery
- Drilling machines

### Advantages

- Excellent suitable for large pitch leaf chains
- Reduced need for maintenance and longer lubrication intervals
- High wear resistance even with minimum lubrication
- Long service life under heavy loads
- Batch number on silver colored plate for traceability
- Eco-friendly: reduced lubricant requirement
- Compatible replacement for all standard chains
- Suitable as leaf chain in sealed applications

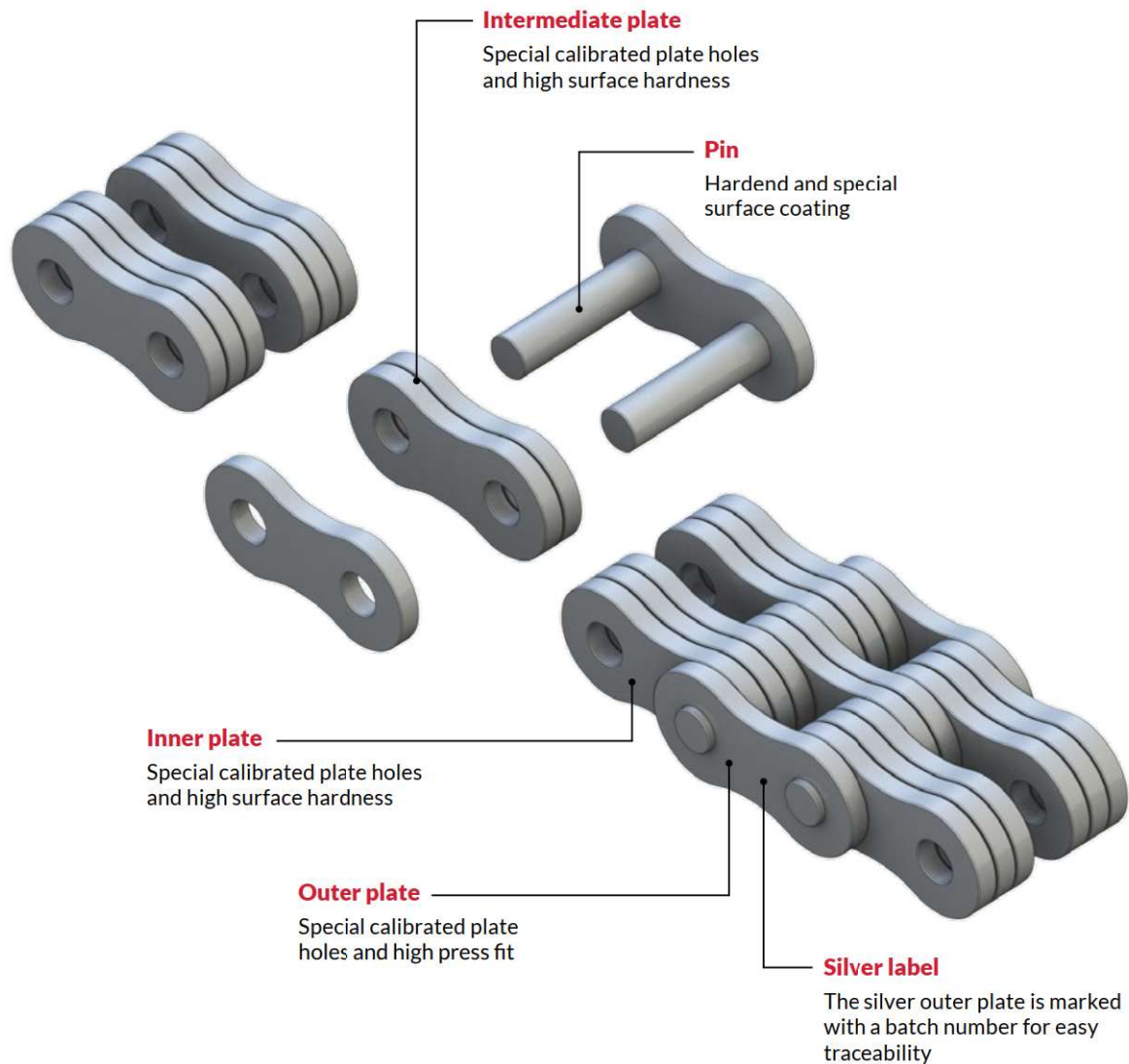
### Lubrication

- Special long-life lubricant optimized by Rexnord
- Operating temperature from -15° C to +75°C
- No dripping of lubricant
- Water-resistant



# Rexnord RexWM Leaf Chain

Extreme Performance



## High fatigue resistance

- Special calibrated plate holes
- Shot-peened chain components
- High pre-loading



## Improved wear resistance

- Significantly longer relubrication intervals
- Special long-life lubricant optimized by Rexnord
- Extreme long service life time
- High operating reliability



## Eco-friendly

- No heavy metals; Teflon- and silicone-free
- Environmental management system conforms to DIN EN ISO 14001
- Free of chromium VI

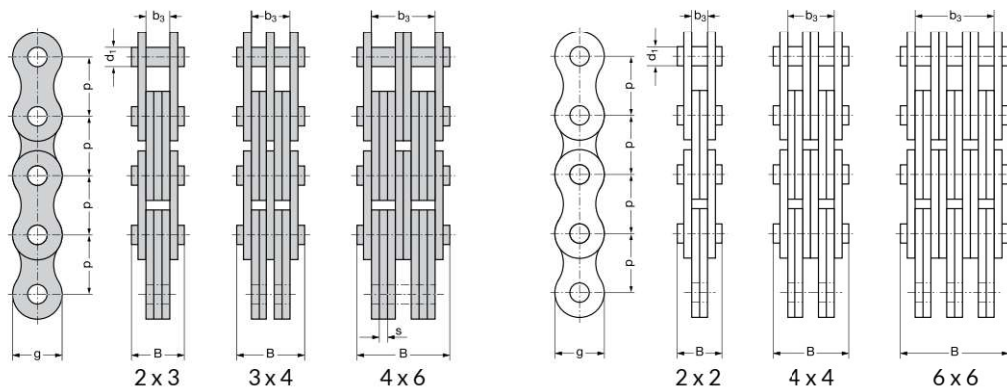


Rexnord fulfils the requirements of  
Machine Directive 2006/42/EC

## F Series European Standard - Rexnord RexWM Leaf Chain ISO 4347

Chain Type	ISO chain number	Pitch		Lacing	Pin diameter	Plate depth	Plate thickness	Length over 100 pitches	Pin length	Width between outer plates	Bearing area	Required minimum tensile strength ISO 4347	Rexnord minimum tensile strength	Weight
		p												
		Inch	mm		mm	mm	mm	mm	mm	mm	mm	cm <sup>2</sup>	N	N
F 31-44	LL 2044	1.25	31.75	4 x 4	10.19	25.7	3.5	3155	33.7	21.8	1.43	190 000	200 000	4.3
F 31-66	LL 2066			6 x 6					48.6	36.6	2.14	285 000	300 000	6.4
F 31-88	LL 2088			8 x 8					63.5	51.4	2.85	380 000	400 000	8.4
F 38-44	LL 2444	1.5	38.1	4 x 4	14.63	33	5	3795	46.9	31.2	2.93	340 000	340 000	8.2
F 38-66	LL 2466			6 x 6					68.3	52.4	4.39	510 000	510 000	12.2
F 38-88	LL 2488			8 x 8					89.7	73.5	5.85	680 000	680 000	16.2
F 44-44	LL 2844	1.75	44.45	4 x 4	15.90	36	6	4426	54.8	36.8*	3.82	400 000	430 000	10.4
F 44-66	LL 2866			6 x 6					80.2	61.4*	5.72	600 000	645 000	15.6
F 44-88	LL 2888			8 x 8					105.4	86.5*	7.63	800 000	860 000	20.8
F 50-44	LL 3244	2	50.8	4 x 4	17.81	41.2	6.3	5055	59.1	39.1	4.49	520 000	520 000	12.8
F 50-66	LL 3266			6 x 6					85.4	65.6	6.73	780 000	780 000	19.1
F 50-88	LL 3288			8 x 8					112.0	92.0	8.98	1040 000	1040 000	25.3
F 63-44	LL 4044	2.5	63.5	4 x 4	22.89	48	8	6320	73.1	49.4	7.32	720 000	720 000	17.7
F 63-66	LL 4066			6 x 6					106.5	82.7	10.99	1080 000	1080 000	26.9
F 63-88	LL 4088			8 x 8					139.9	116.0	14.65	1440 000	1440 000	35.1
F 76-44	LL 4844	3	76.2	4 x 4	29.24	62	10	7575	90.5	61.4	11.70	1120 000	1120 000	30.2
F 76-66	LL 4866			6 x 6					131.4	102.7	17.54	1680 000	1680 000	45.0
F 76-88	LL 4888			8 x 8					172.8	144.0	23.39	2240 000	2240 000	59.8

\* Please contact Rexnord regarding precision of fit with ISO anchors







# Rexnord RexProX Leaf Chain

## Extreme Performance

When specifying and designing our products we strive to achieve the high demands of our customers by providing significantly reduced life-cycle costs and very low maintenance. The Rexnord RexProX® Leaf Chain meets these criteria and is at the same time suitable for applications under extreme conditions.

### Industries Served:

Material handling  
Telehandlers  
Machine tools  
Drilling machines

### Optimized chain selection

The smaller and lighter chain design provides the most evenly distribution and load to the pin. Based on an optimized material utilization, an extremely high loading capacity and maximum fatigue strength, it is ideal for heavy-duty drives and lifting purposes. The linear scalability allows an optimum chain choice fitting best to individual requirements.

### Significant higher wear life time

Due to a reduced joint stress and a higher wear volume the wear lifetime for this leaf chain is now doubled. This property is completed by an excellent surface adhesion and drip resistance, even at high temperatures.

### Reduced maintenance

The Rexnord RexPro® Lubrication ensures an excellent protection extending the re-lubrication interval fivefold compared to a standard leaf chain. This not only reduces the maintenance, but also increases productivity and guarantees a dependable operation.

### Overall cost saving

As a well specified, high-quality product, this leaf chain lasts many times longer. It requires significantly less in-operation maintenance and saves overall costs in terms of procurement, maintenance, replacement and equipment downtime.



### Features

- Complies with the excellent RexPro quality
- Excellent wear resistance
- High tensile strength
- High fatigue strength
- Optimum fatigue resistance
- New computer-controlled preloading process

### Advantages

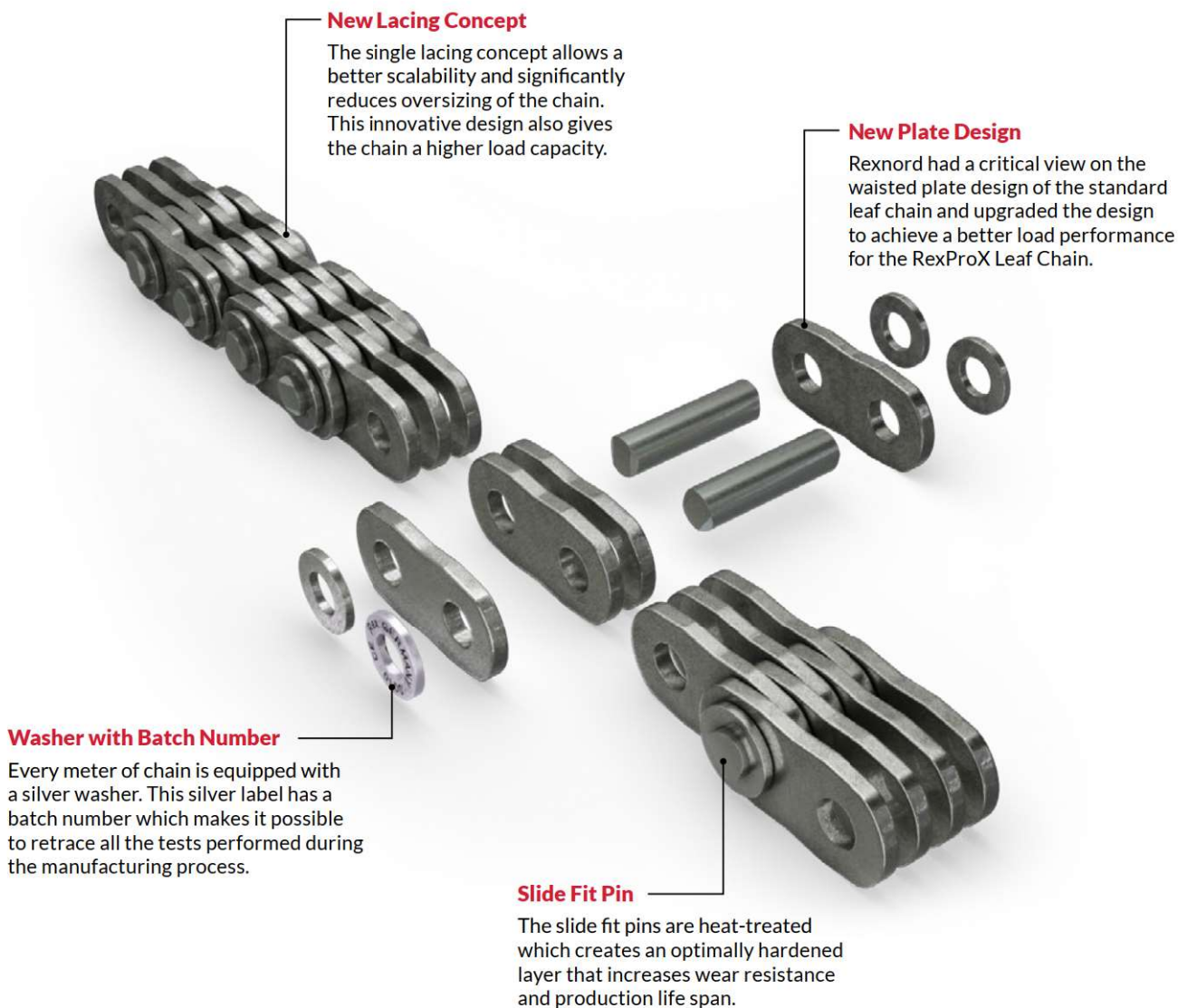
- For high-performance power transmission applications
- Extremely high impact strength
- Extremely robust, even under difficult conditions

### Lubrication

- Improved protection with Rexnord RexPro Lubrication
- Lubrication with NSF H2 certification, RoHS:2011 compliant for electronics industry
- Operating temperature: - 30° C to + 130° C (special lubrication can expand range to - 40° C to + 250° C)
- Very good surface adhesion; remains drip-resistant even at high temperatures
- Lubrication without heavy metals, Telon or silicone
- Other special lubricants are available (for example, lubricant with NSF H1 permit)

# Rexnord RexProX Leaf Chain

## Extreme Performance



### Loading capacity

- High loading capacity
- Outstanding weight performance ratio



### Wear resistance

- All-round protection due to Rexnord RexPro lubrication
- Outstanding wear resistance
- Extreme long service life



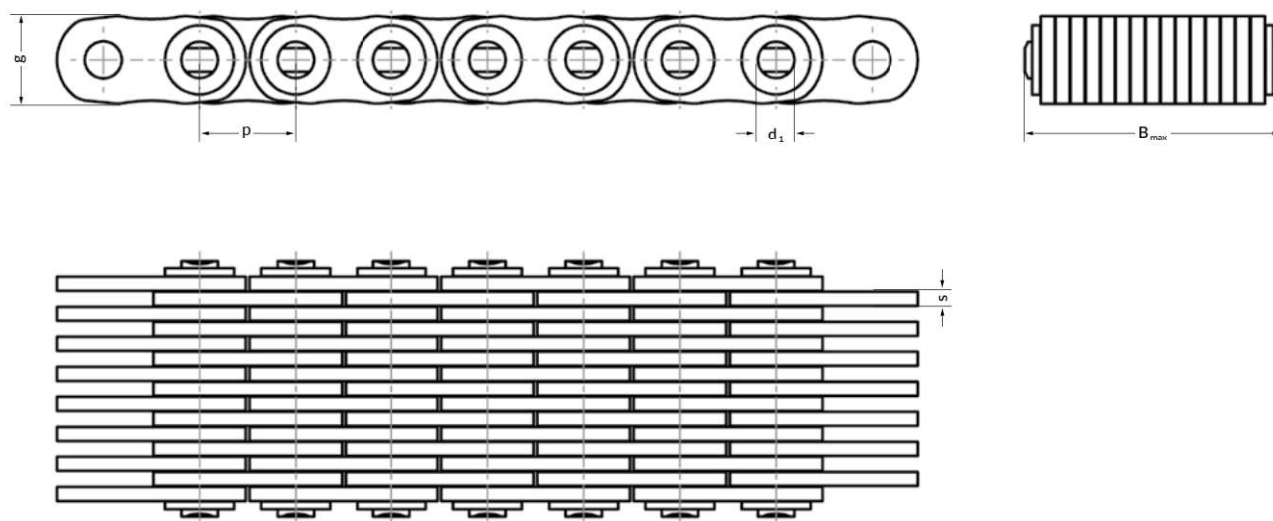
### Eco-friendly

- NSF H2 certification
- RoHS:2011 conformity
- Free from chromium VI



# Rexnord RexProX Leaf Chain Dimensions

## Rex® 21-15



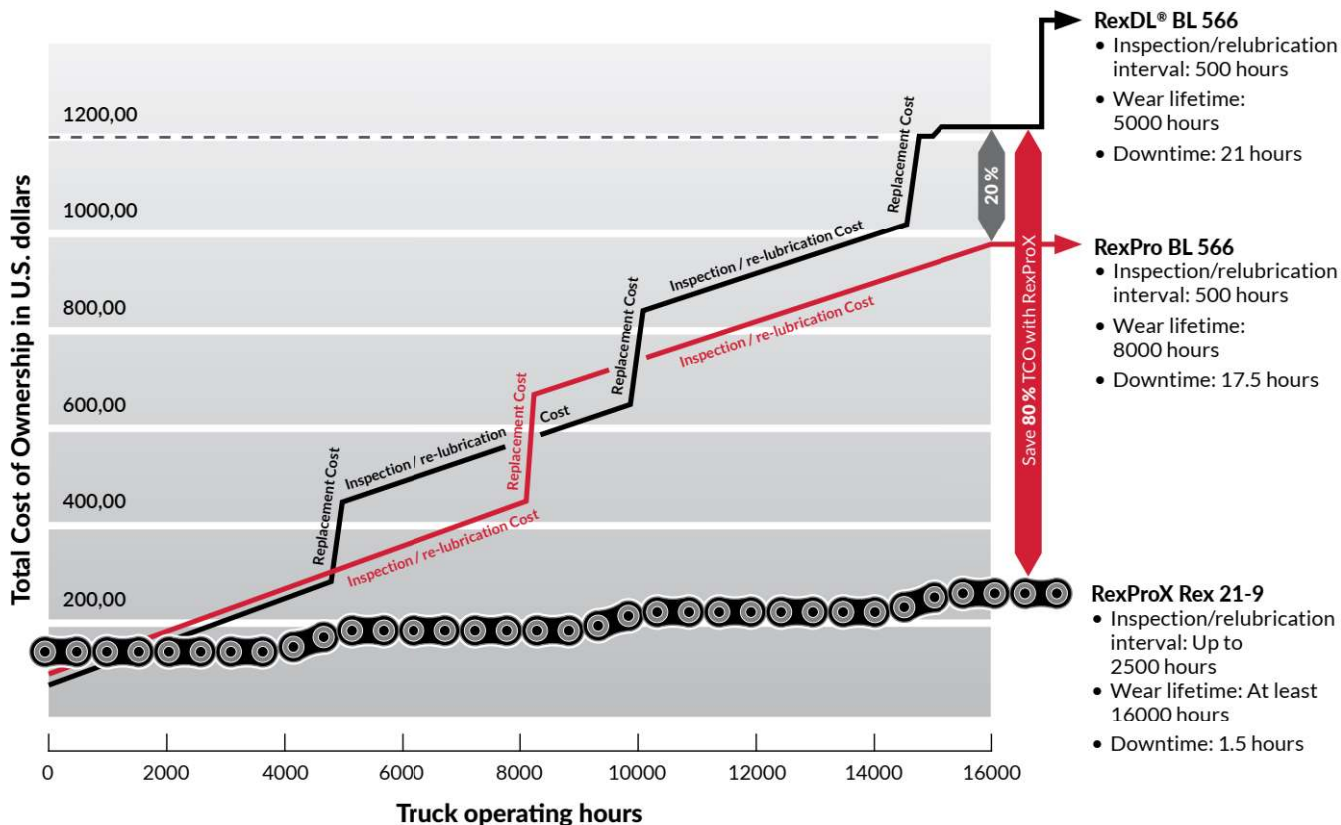
## Rexnord RexProX Leaf Chain

Chain type	Pitch mm	Pin Ø mm	Plate height mm	Plate thickness mm	Overall width mm	Weight kg/m	UTS kN ①
	P	d <sub>1</sub>	g	s	B <sub>max</sub>		
Rex 21-5	21	7.92	19	3.1	23.0	2.1	72
Rex 21-7	21	7.92	19	3.1	29.5	2.8	108
Rex 21-9	21	7.92	19	3.1	36.0	3.5	144
Rex 21-11	21	7.92	19	3.1	42.5	4.3	180
Rex 21-13	21	7.92	19	3.1	49.0	5.0	216
Rex 21-15	21	7.92	19	3.1	55.5	5.7	252
Rex 21-17	21	7.92	19	3.1	62.0	6.5	288
Rex 21-19	21	7.92	19	3.1	68.5	7.2	324

① Ultimate Tensile Strength

## Save 80% Total Cost of Ownership with Rexnord RexProX Leaf Chain

The initial cost, the wear lifetime and the maintenance intervals are the three critical factors that determine the total cost of your chain. With inspection and re-lubrication intervals up to 2500 hours and a doubled wear lifetime, the Rexnord RexProX allows you to save up to 80% on your total cost of ownership.

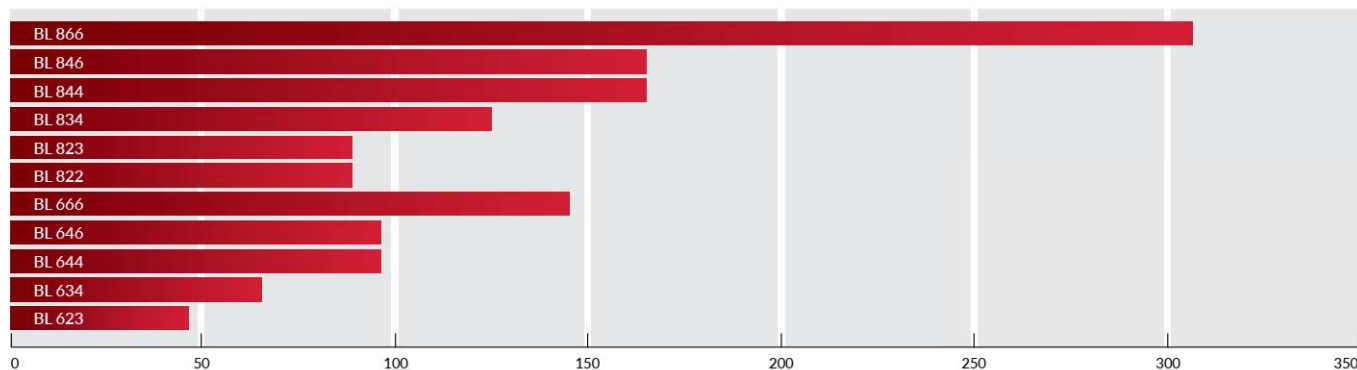


## Fit and proper chain choice and scalability

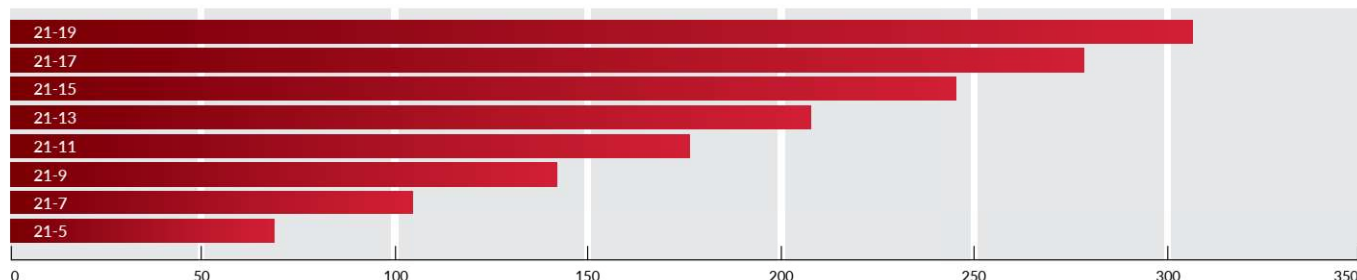


Choosing standardized chains by breaking load means in many cases oversizing. The RexProX Leaf Chain provides linear scalability for optimum chain choice, fitting best to the requirements, while oversizing is significantly reduced.

### ISO min breaking load [kN]



### RexProX Leaf Chain min breaking load [kN]







# Rexnord RexOil

## High Performance Chain Spray

Rexnord RexOil makes it possible to maintain and relubricate roller chains and leaf chains simply and effectively in a wide range of applications. RexOil makes the lubrication of chains reliable, economical and environmentally friendly. None of the oils and lubricants used by Rexnord contains silicone or Teflon, and all are distinguished by a low environmental impact (in accordance with DIN EN ISO 14001).

**Industries Served:**  
 Packaging and logistics  
 Food and beverages  
 Machine construction  
 Wood industry  
 Agriculture

### Effective lubrication

The extended spray head grants better accuracy and increased comfort of use without wasting any grease. With its outstanding penetration and lubrication properties, RexOil delivers an outstanding corrosion protection and very good wear resistance.

### The right lubrication

With RexOil, Rexnord offers a long-term lubricant for many applications in an extremely wide range of industries.

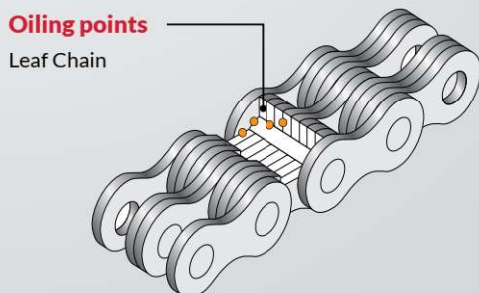
### Longer lubrication intervals

When long-life lubricants are used, relubrication intervals are significantly longer. And in some case, the use of lubricant waxes or compounds containing solid lubricants means that relubrication can be dispensed with altogether.



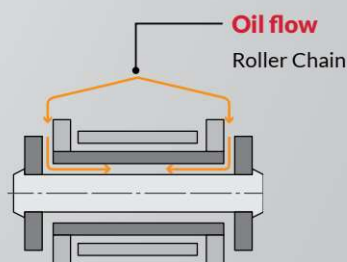
### Features

- Outstanding penetration and lubrication properties
- Ensures removal of residual lubricant
- Displaces water and moisture
- Suitable for temperature ranges from -10°C to +150°C
- Appropriate lubrication guarantees a significantly longer service life than is the case with an unlubricated chain



### Advantages

- Effective corrosion protection and high oxidation stability
- Extended spray head for easy, comfortable handling
- Lubricant has NSF H2 certification
- Reliable, environmentally friendly, economical

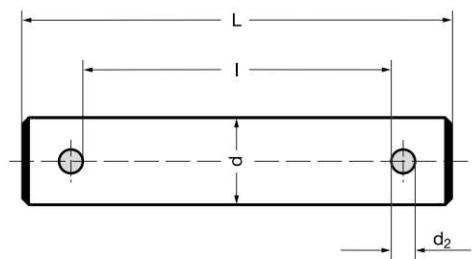
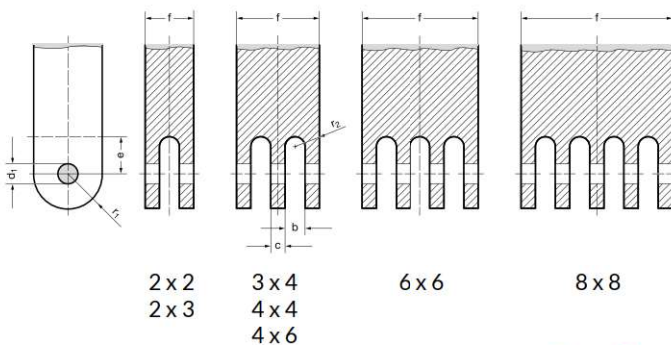


## Recommended chain anchor dimensions for connecting leaf chain inner links

Chain No.	Inner link connector dimensions Dimensions in mm						
	f	b	c	d <sub>1</sub>	e	r <sub>1</sub>	r <sub>2</sub>
	max.	min.	max.	D 10	min.	max.	max.
BL 522	12.7	5.0	–	6.0	11.0	8.0	2.0
BL 523	14.9	7.5	–				2.0
BL 534	19.9	5.0	2.4				2.0
BL 544	22.4	5.0	4.8				2.0
BL 546	26.9	7.5	4.8				2.0
BL 566	31.9	5.0	4.8				2.0
BL 588	42.4	5.0	4.8				2.0
BL 623	19.9	10.3	–	8.0	14.0	9.5	5.0
BL 634	26.9	6.8	3.2				3.0
BL 644	29.9	6.8	6.4				3.0
BL 646	36.9	10.3	6.4				3.0
BL 666	42.9	6.8	6.4				3.0
BL 688	56.4	6.8	6.4				3.0
BL 823	24.9	12.8	–	9.6	18.0	12.5	6.0
BL 834	32.9	8.5	4.0				4.0
BL 844	36.9	8.5	8.0				4.0
BL 846	45.9	12.8	8.0				6.0
BL 866	52.9	8.5	8.0				4.0
BL 888	69.4	8.5	8.0				4.0
BL 1023	69.4	15.1	8.0	11.2	22.0	15.0	4.0
BL 1034	39.0	10.0	4.7				5.0
BL 1044	44.0	10.0	9.4				5.0
BL 1046	54.0	15.1	9.4				7.0
BL 1066	63.0	10.0	9.4				5.0
BL 1088	79.7	10.0	9.4				5.0
BL 1223	34.3	17.7	–	12.8	26.0	19.0	8.0
BL 1234	46.0	11.8	5.5				5.0
BL 1244	51.7	11.8	11.0				5.0
BL 1246	63.3	17.7	11.0				8.0
BL 1266	75.1	11.8	11.0				5.0
BL 1288	98.4	11.8	11.0				5.0
BL 1423	38.5	20.1	–	14.3	31.0	22.0	10.0
BL 1434	52.0	13.4	6.3				6.0
BL 1444	58.4	13.4	12.6				6.0
BL 1446	71.5	20.1	12.6				10.0
BL 1466	84.9	13.4	12.6				6.0
BL 1623	42.8	22.5	–	17.5	34.0	25.0	10.0
BL 1634	57.7	15.0	7.1				7.0
BL 1644	65.4	15.0	14.2				7.0
BL 1646	79.6	22.5	14.2				10.0
BL 1666	94.3	15.0	14.2				7.0
BL 1688	123.7	15.0	14.2				7.0

## Connecting pin for joining leaf chains to chain anchor

Chain No.	Connecting pin order no.	Connecting pin Dimensions in mm			
		l min.	L max.	d max.	d <sub>2</sub>
BL 522	709 – 355 – 22	12.8	19.4	5.94	2.0
BL 523	709 – 355 – 23	15.0	21.6		
BL 534	709 – 355 – 34	20.0	26.6		
BL 544	709 – 355 – 44	22.5	29.1		
BL 546	709 – 355 – 46	27.0	33.7		
BL 566	709 – 355 – 66	32.0	38.7		
BL 588	709 – 355 – 88	42.5	49.3		
BL 623	709 – 307 – 23	20.0	30.7	7.92	3.2
BL 634	709 – 307 – 34	27.0	37.7		
BL 644	709 – 307 – 44	30.0	40.7		
BL 646	709 – 307 – 46	37.0	47.7		
BL 666	709 – 307 – 66	43.0	53.7		
BL 688	709 – 307 – 88	56.5	67.2		
BL 823	709 – 309 – 23	25.0	35.7	9.53	3.2
BL 834	709 – 309 – 34	33.0	43.7		
BL 844	709 – 309 – 44	37.0	47.7		
BL 846	709 – 309 – 46	46.0	56.7		
BL 866	709 – 309 – 66	53.0	63.7		
BL 888	709 – 309 – 88	69.5	80.3		
BL 1023	709 – 311 – 23	30.0	42.4	11.1	4.0
BL 1034	709 – 311 – 34	39.2	51.6		
BL 1044	709 – 311 – 44	44.2	56.6		
BL 1046	709 – 311 – 46	54.2	66.6		
BL 1066	709 – 311 – 66	63.2	75.6		
BL 1088	709 – 311 – 88	79.9	92.4		
BL 1223	709 – 312 – 23	34.5	46.9	12.7	4.0
BL 1234	709 – 312 – 34	46.2	58.6		
BL 1244	709 – 312 – 44	51.9	64.4		
BL 1246	709 – 312 – 46	63.5	76.0		
BL 1266	709 – 312 – 66	75.3	87.8		
BL 1288	709 – 312 – 88	98.6	111.1		
BL 1423	709 – 314 – 23	38.7	51.1	14.27	4.0
BL 1434	709 – 314 – 34	52.2	64.6		
BL 1444	709 – 314 – 44	58.6	71.1		
BL 1446	709 – 314 – 46	71.7	84.2		
BL 1466	709 – 314 – 66	85.1	97.7		
BL 1623	709 – 317 – 23	43.1	60.6	17.46	5.0
BL 1634	709 – 317 – 34	58.0	75.5		
BL 1644	709 – 317 – 44	65.7	82.9		
BL 1646	709 – 317 – 46	79.9	97.4		
BL 1666	709 – 317 – 66	94.6	112.2		
BL 1688	709 – 317 – 88	124.0	141.6		



All pins are fitted with 2 cotters and – from BL 1234 and F 38 upwards – with 2 additional washers.

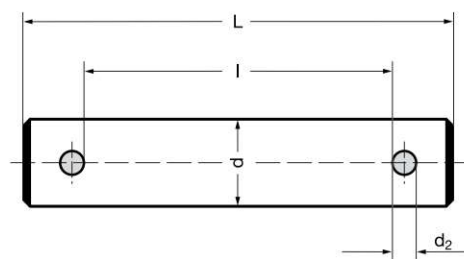
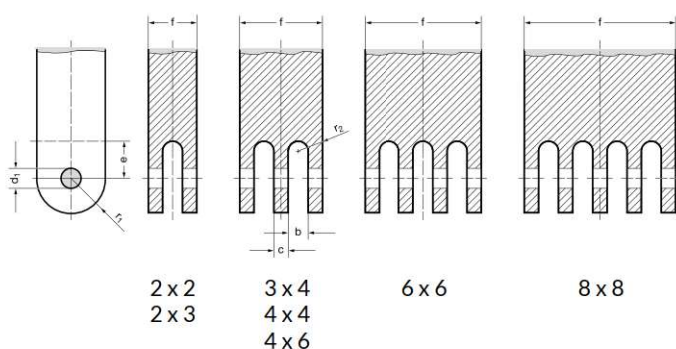


## Recommended chain anchor dimensions for connecting leaf chain inner links

Chain No.	Inner link connector dimensions Dimensions in mm						
	f	b	c	d <sub>1</sub>	e	r <sub>1</sub>	r <sub>2</sub>
	max.	min.	max.	D 10	min.	max.	max.
F 15-44	14.9	3.5	3.0	5.1	8.5	8.0	1.7
F 15-66	21.9						
F 19-44	17.5	4.1	3.6	5.75	10.0	9.5	1.7
F 19-66	24.6						
F 19V-44	22.9	5.2	4.7	6.6	10.0	10.5	2.0
F 19V-66	32.9						
F 25-44	27.9	6.7	6.2	8.3	13.5	13.0	3.0
F 25-66	40.9						
F 25-88	53.9						
F 31-44	32.9	7.5	7.0	10.2	17.0	16.5	3.5
F 31-68	46.9						
F 31-88	61.9						
F 38-44	48.0	11.0	10.0	14.7	22.0	20.0	5.0
F 38-66	69.0						
F 38-88	90.0						
F 44-22	29.5	13.0	12.0	16.0	25.0	24.0	6.0
F 44-44	54.8						
F 44-66	80.0						
F 44-88	105.8						
F 50-22	34.2	13.6	12.6	17.9	28.0	27.0	6.0
F 50-44	59.7						
F 50-66	86.2						
F 50-88	113.7						
F 63-22	39.6	17.0	16.0	23.0	35.0	35.0	8.0
F 63-44	73.0						
F 63-66	106.3						
F 63-88	139.8						
F 76-22	50.2	21.0	20.0	29.3	45.0	40.0	10.0
F 76-44	91.2						
F 76-66	133.2						
F 76-88	173.9						

## Connecting pin for attaching leaf chains to chain anchor

Chain No.	Connecting pin order no.	Connecting pin dimensions Dimensions in mm			
		I min.	L max.	d max.	d <sub>2</sub>
F 15-44	709-205-44	15.0	21.1	5.08	1.6
F 15-66	709-205-66	22.0	28.2		
F 19-44	709-405-44	17.6	25.5	5.72	2.0
F 19-66	709-405-66	24.7	32.7		
F 19V-44	709 - 206 - 44	23.0	30.2	6.5	2.0
F 19V-66	709 - 206 - 66	33.0	40.3		
F 25-44	709-208-44	28.0	38.7	8.28	3.2
F 25-66	709-208-66	41.0	51.7		
F 25-88	709-208-88	54.0	64.7		
F 31-44	709-210-44	33.0	43.7	10.19	3.2
F 31-68	709-210-66	47.0	57.7		
F 31-88	709-210-88	62.0	72.7		
F 38-44	709-214-44	48.2	60.6	14.63	4.0
F 38-66	709-214-66	69.2	81.6		
F 38-88	709-214-88	90.2	102.6		
F 44-22	709-215-22	29.7	42.1	15.9	4.0
F 44-44	709-215-44	55.0	67.5		
F 44-66	709-215-66	80.2	92.7		
F 44-88	709-215-88	106.0	118.5		
F 50-22	709-217-22	34.4	51.9	17.81	5.0
F 50-44	709-217-44	59.9	77.5		
F 50-66	709-217-66	86.4	104.0		
F 50-88	709-217-88	113.9	131.5		
F 63-22	709-222-22	39.9	60.8	22.89	6.3
F 63-44	709-222-44	73.3	94.3		
F 63-66	709-222-66	106.6	127.6		
F 63-88	709-222-88	140.1	161.1		
F 76-22	709-229-22	50.5	71.5	29.23	6.3
F 76-44	709-229-44	91.5	112.5		
F 76-66	709-229-66	133.5	154.5		
F 76-88	709-229-88	174.2	195.2		



All pins are fitted with 2 cotters and – from BL 1234 and F 38 upwards – with 2 additional washers.

## Leaf chain anchoring with end links

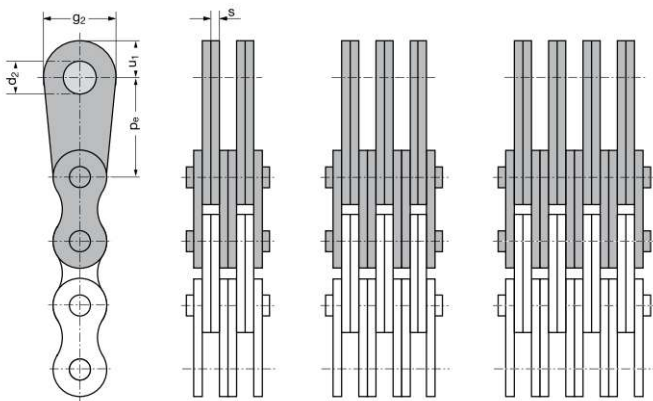
Chain No.	End link order no.		Dimensions in mm				
	IEG	AEG	Pe	d <sup>2</sup> A11	g <sub>2</sub>	s	u <sub>1</sub>
F 15 - 44	170 - 115 - 44	45	20	8	18.0	1.5	11.0
F 15 - 66	170 - 115 - 66	65					
F 19 - 44	170 - 119 - 44	—	25	10	19.8	1.8	11.2
F 19 - 66	170 - 119 - 66	—					
F 19V - 44	170 - 120 - 44	45	25	10	19.8	1.8	11.2
F 19V - 66	170 - 120 - 66	65					
F 25 - 44	170 - 124 - 44	45	30	12	25.0	3.0	15.0
F 25 - 66	170 - 124 - 66	65					
F 25 - 88	170 - 124 - 88	85					
F 31 - 44	170 - 131 - 44	45	50	18	40.0	3.5	25.0
F 31 - 66	170 - 131 - 66	65					
F 31 - 88	170 - 131 - 88	85					
F 38 - 44	170 - 138 - 44	45	65	24	50.0	5.0	29.0
F 38 - 66	170 - 138 - 66	65					
F 38 - 88	170 - 138 - 88	85					
F 44 - 22	170 - 144 - 22	25	80	28	60.0	6.0	32.0
F 44 - 44	170 - 144 - 44	45					
F 44 - 66	170 - 144 - 66	65					
F 50 - 22	170 - 150 - 22	25	90	32	70.0	6.3	43.0
F 50 - 88	170 - 150 - 88	85					
F 63 - 44	170 - 163 - 44	45	100	38	80.0	8.0	46.5
F 63 - 66	170 - 163 - 66	65					

End links are available as inner and outer links. Ordering example for end links to fit leaf chain F 38-44:

a) as IEG (inner end link): 170-138-44

b) as AEG (outer end link): 170-138-45

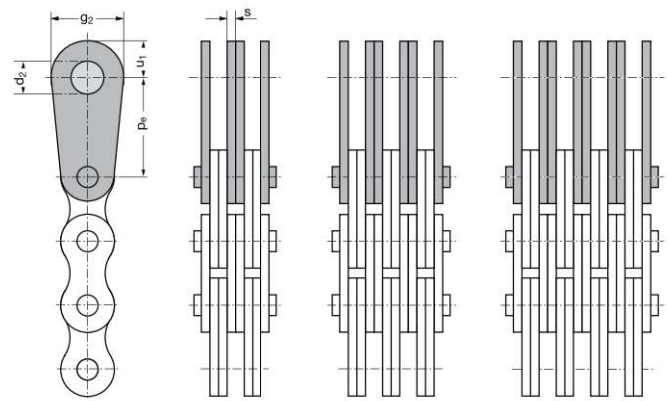
### End links as inner links (IEG)



#### Scope of delivery:

End links (pear-shaped) along with leaf chain outer link supplied as a complete ready-to-rivet sub-assembly or assembled to chain.

### End links as outer links (AEG)



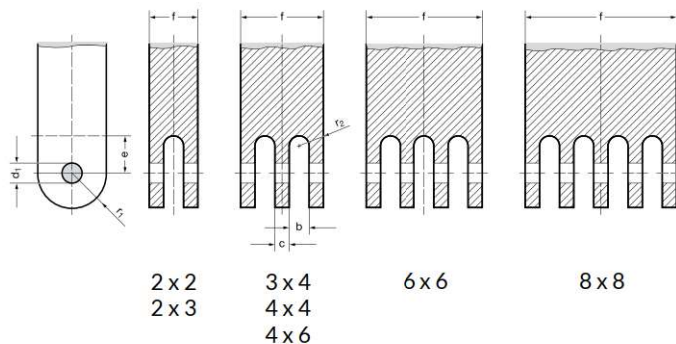
#### Scope of delivery:

End links (pear-shaped) and matching ready-to-rivet pin or assembled to chain.



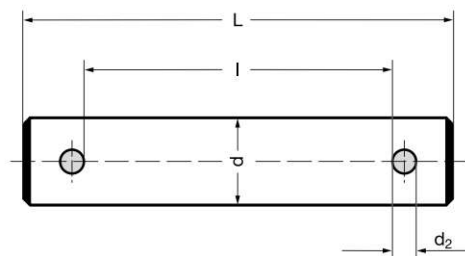
## Recommended chain anchor dimensions for connecting leaf chain inner links

Chain No.	Inner link connector dimensions Dimensions in mm						
	f	b	c	d <sub>1</sub>	e	r <sub>1</sub>	r <sub>2</sub>
	max.	min.	max.	D 10	min.	max.	max.
AL 522	10.7	4.2	-	5.1	9.0	6.5	2.0
AL 544	18.9	4.2	4.0				2.0
AL 566	26.9	4.2	4.0				2.0
AL 588	35.4	4.2	4.0				2.0
AL 622	12.7	5.0	-	6.0	11.0	8.0	2.0
AL 644	22.4	5.0	4.8				2.0
AL 666	31.9	5.0	4.8				2.0
AL 688	42.4	5.0	4.8				2.0
AL 844	29.9	6.8	6.4	8.0	14.0	9.5	3.0
AL 866	42.9	6.8	6.4				3.0
AL 888	56.4	6.8	6.4				3.0
AL 1044	36.9	8.5	8.0				4.0
AL 1066	52.9	8.5	8.0	9.6	18.0	12.5	4.0
AL 1088	69.4	8.5	8.0				4.0
AL 1244	44.0	10.0	9.4				5.0
AL 1266	63.0	10.0	9.4	11.2	22.0	15.0	5.0
AL 1288	79.7	10.0	9.4				5.0
AL 1444	51.7	11.8	11.0				5.0
AL 1466	75.1	11.8	11.0	12.8	26.0	19.0	5.0
AL 1488	98.4	11.8	11.0				5.0
AL 1644	58.4	13.4	12.6				6.0
AL 1666	84.9	13.4	12.6	14.3	31.0	22.0	6.0



## Connecting pin for attaching leaf chains to chain anchor

Chain No.	Connecting pin order no.	Connecting pin dimensions Dimensions in mm			
		l min.	L max.	d max.	d <sub>2</sub>
AL 522	709 - 305 - 22	10.8	17.0	5.08	1.6
AL 544	709 - 305 - 44	19.0	25.2		
AL 566	709 - 305 - 66	27.0	33.3		
AL 588	709 - 305 - 88	35.5	41.8		
AL 622	709 - 355 - 22	12.8	19.4	5.94	2.0
AL 644	709 - 355 - 44	22.5	29.1		
AL 666	709 - 355 - 66	32.0	38.7		
AL 688	709 - 355 - 88	42.5	49.3		
AL 844	709 - 307 - 44	30.0	40.7	7.92	3.2
AL 866	709 - 307 - 66	43.0	53.7		
AL 888	709 - 307 - 88	56.5	67.2		
AL 1044	709 - 309 - 44	37.0	47.7		
AL 1066	709 - 309 - 66	53.0	63.7	9.53	3.2
AL 1088	709 - 309 - 88	69.5	80.3		
AL 1244	709 - 311 - 44	44.2	56.6		
AL 1266	709 - 311 - 66	63.2	75.6	11.1	4.0
AL 1288	709 - 311 - 88	79.9	92.4		
AL 1444	709 - 312 - 44	50.0	64.4		
AL 1466	709 - 312 - 66	75.3	87.8	12.7	4.0
AL 1488	709 - 312 - 88	98.6	111.1		
AL 1644	709 - 314 - 44	58.6	71.1		
AL 1666	709 - 314 - 66	85.1	97.7		



All pins are fitted with 2 cotters and - from BL 1234 and F 38 upwards - with 2 additional washers.

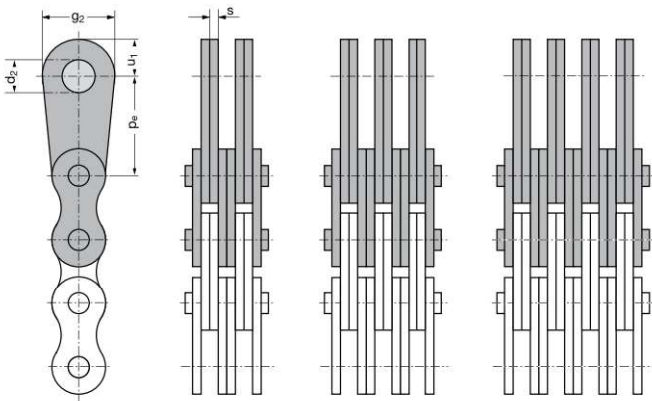
## Leaf chain anchoring with end links

Chain No.	End link order no.		Dimensions in mm				
	IEG	AEG	Pe	d <sub>2</sub> A11	g <sub>2</sub>	s	u <sub>1</sub>
AL 644	170 - 118 - 44	45	25	10	19.8	2.4	11.2
AL 666	170 - 118 - 66	65					
AL 688	170 - 118 - 88	85					
AL 1044	170 - 130 - 44	45	40	14	30.0	4.0	18.0
AL 1066	170 - 130 - 66	65					

End links are available as inner and outer links. Ordering example for end links to fit leaf chain AL 644:

a) as IEG (inner end link): 170-118-44    b) as AEG (outer end link): 170-118-45

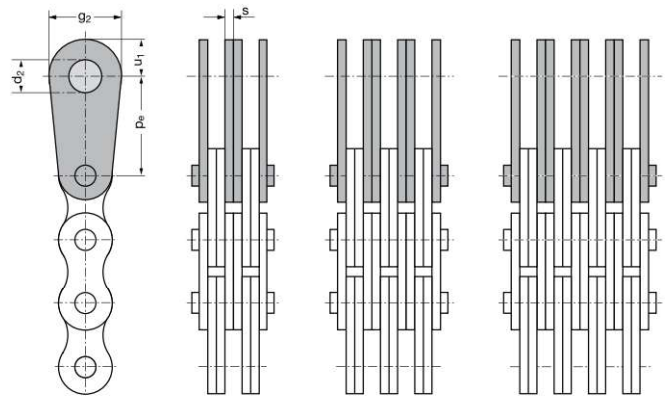
### End links as inner links (IEG)



#### Scope of delivery:

End links (pear-shaped) along with leaf chain outer link supplied as a complete ready-to-rivet sub-assembly or assembled to chain.

### End links as outer links (AEG)



#### Scope of delivery:

End links (pear-shaped) and matching ready-to-rivet pin or assembled to chain.





# Overview of Rexnord Leaf Chain Portfolio

## Extreme Performance Leaf Chain

Chain	Static loading	Dynamic loading	Loading capacity	Wear resistance	Acid corrosion resistance	Damp corrosion resistance	Eco-friendly	Ex-Works Lubrication	Linear scalability
RexHiPro® Leaf Chain								VSK001	
Rex Athletic® Leaf Chain								VSK010	
RexWM® Leaf Chain								VSK010	
RexProX Leaf Chain								VSK001	

## High Performance Leaf Chain

Chain	Static loading	Dynamic loading	Loading capacity	Wear resistance	Acid corrosion resistance	Damp corrosion resistance	Eco-friendly	Ex-Works Lubrication	Linear scalability
RexPro Leaf Chain								VSK001	

## Approved Performance Leaf Chain

Chain	Static loading	Dynamic loading	Loading capacity	Wear resistance	Acid corrosion resistance	Damp corrosion resistance	Eco-friendly	Ex-Works Lubrication	Linear scalability
RexDL Leaf Chain									

### Symbol Key



Loading capacity



Damp corrosion resistance



Acid corrosion resistance



Wear resistance



Eco-friendly



Linear scalability

ALL AROUND  
THE GLOBE,

CUSTOMERS TRUST  
OUR PROVEN BRANDS.

### WHY CHOOSE REXNORD?

When it comes to providing highly engineered products that improve productivity and efficiency for industrial applications worldwide, Rexnord is the most reliable in the industry. Commitment to customer satisfaction and superior value extend across every business function.

#### Delivering Lowest Total Cost of Ownership

The highest quality products are designed to help prevent equipment downtime and increase productivity and dependable operation.

#### Valuable Expertise

An extensive product offering is accompanied by global sales specialists, customer service and maintenance support teams, available anytime.

#### Solutions to Enhance Ease of Doing Business

Commitment to operational excellence ensures the right products at the right place at the right time.