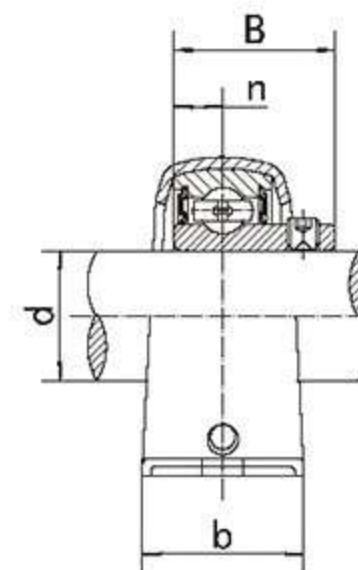
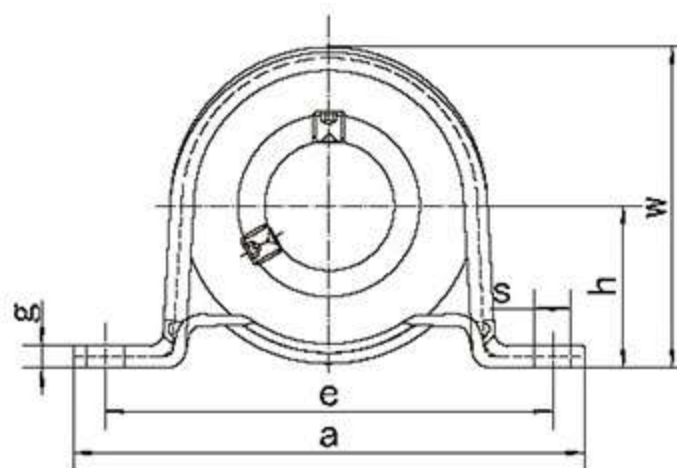
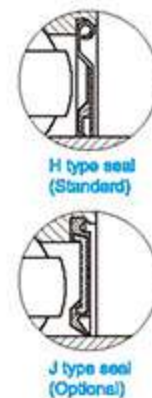
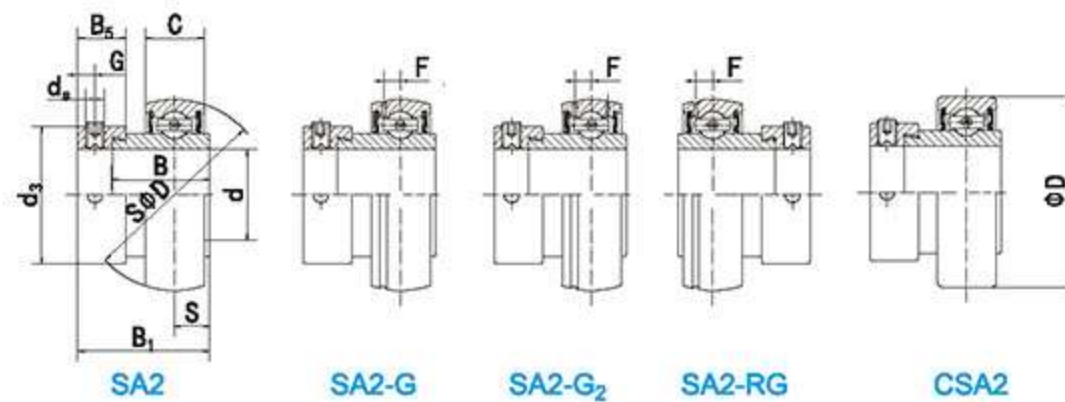


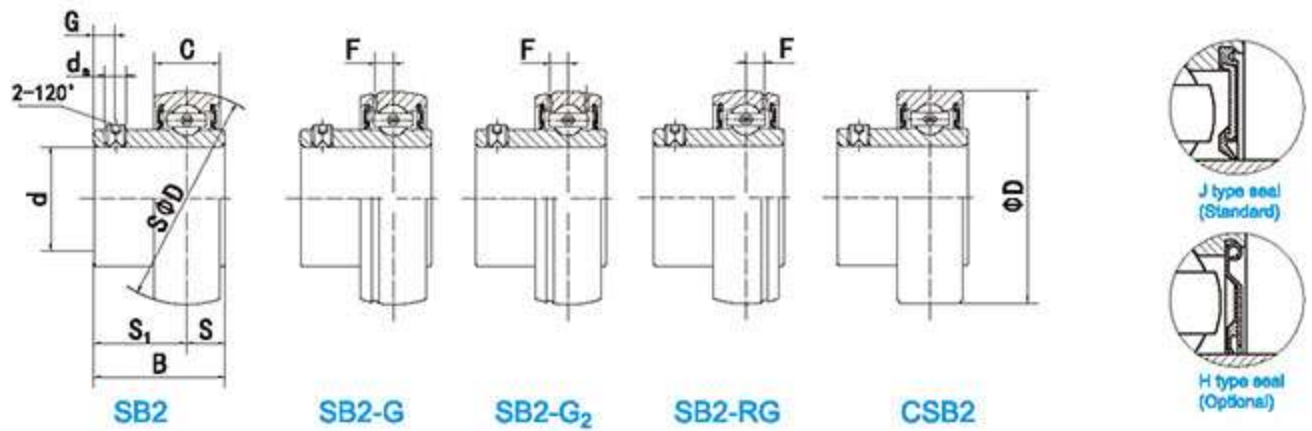
Unit NO.	Dimensions(mm/in.)										Bolt Size mm/in.	Bearing NO.	Housing NO.	Weight(kg)
	d	a	e	b	m	S	t	f(min)	B1	n				
SAPFL208-25	1-9/16	5-13/16	4-11/16	3-15/16	13/16	17/32	0.268	3-37/64	1.7205	0.4331	1/2	SA208-25	PFL208	0.91
SAPFL208-24	1-1/2	5-13/16	4-11/16	3-15/16	13/16	17/32	0.268	3-37/64	1.7205	0.4331	1/2	SA208-24	PFL208	0.91
SAPFL208	40	148	119	100	21	13.5	6.8	91	43.7	11	M12	SA208	PFL208	0.91
SAPFL207-23	1-7/16	4-13/16	3-15/16	3-45/64	25/32	7/16	0.205	3-3/16	1.5315	0.374	3/8	SA207-23	PFL207	0.67
SAPFL207-22	1-3/8	4-13/16	3-15/16	3-45/64	25/32	7/16	0.205	3-3/16	1.5315	0.374	3/8	SA207-22	PFL207	0.67
SAPFL207-21	1-5/16	4-13/16	3-15/16	3-45/64	25/32	7/16	0.205	3-3/16	1.5315	0.374	3/8	SA207-21	PFL207	0.67
SAPFL207-20	1-1/4	4-13/16	3-15/16	3-45/64	25/32	7/16	0.205	3-3/16	1.5315	0.374	3/8	SA207-20	PFL207	0.67
SAPFL207	35	122	100	94	20	11	5.2	81	38.9	9.5	M10	SA207	PFL207	0.67
SAPFL206-20	1-1/4	4-7/16	3-9/16	3-5/16	23/32	7/16	0.205	2-51/64	1.4055	0.3543	3/8	SA206-20	PFL206	0.46
SAPFL206-19	1-3/16	4-7/16	3-9/16	3-5/16	23/32	7/16	0.205	2-51/64	1.4055	0.3543	3/8	SA206-19	PFL206	0.46
SAPFL206-18	1-1/8	4-7/16	3-9/16	3-5/16	23/32	7/16	0.205	2-51/64	1.4055	0.3543	3/8	SA206-18	PFL206	0.46
SAPFL206-17	1-1/16	4-7/16	3-9/16	3-5/16	23/32	7/16	0.205	2-51/64	1.4055	0.3543	3/8	SA206-17	PFL206	0.46
SAPFL206	30	113	90.5	84	18	11	5.2	71	35.7	9	M10	SA206	PFL206	0.46
SAPFL205-16	1	3-3/4	2-63/64	2-51/64	23/32	23/64	0.157	2-23/64	1.2204	0.2953	5/16	SA205-16	PFL205	0.29
SAPFL205-15	15/16	3-3/4	2-63/64	2-51/64	23/32	23/64	0.157	2-23/64	1.2204	0.2953	5/16	SA205-15	PFL205	0.29
SAPFL205-14	7/8	3-3/4	2-63/64	2-51/64	23/32	23/64	0.157	2-23/64	1.2204	0.2953	5/16	SA205-14	PFL205	0.29
SAPFL205-13	13/16	3-3/4	2-63/64	2-51/64	23/32	23/64	0.157	2-23/64	1.2204	0.2953	5/16	SA205-13	PFL205	0.29
SAPFL205	25	95	76	71	18	9	4	60	31	7.5	M8	SA205	PFL205	0.29
SAPFL204-12	3/4	3-35/64	2-13/16	2-41/64	5/8	23/64	0.157	2-13/64	1.2204	0.2953	5/16	SA204-12	PFL204	0.25
SAPFL204	20	90	71.5	67	16	9	4	56	31	7.5	M8	SA204	PFL204	0.25
SAPFL203-11	11/16	3-3/16	2-1/2	2-21/64	9/16	9/32	0.157	1-59/64	1.126	0.2559	1/4	SA203-11	PFL204	0.2
SAPFL203	17	3-3/16	2-1/2	2-21/64	9/16	9/32	0.157	1-59/64	1.126	0.2559	1/4	SA203	PFL204	0.2
SAPFL202-10	5/8	3-3/16	2-1/2	2-21/64	9/16	9/32	0.157	1-59/64	1.126	0.2559	1/4	SA202-10	PFL204	0.2
SAPFL202-9	9/16	3-3/16	2-1/2	2-21/64	9/16	9/32	0.157	1-59/64	1.126	0.2559	1/4	SA202-9	PFL204	0.2
SAPFL202	15	3-3/16	2-1/2	2-21/64	9/16	9/32	0.157	1-59/64	1.126	0.2559	1/4	SA202	PFL204	0.2
SAPFL201-8	1/2	3-3/16	2-1/2	2-21/64	9/16	9/32	0.157	1-59/64	1.126	0.2559	1/4	SA201-8	PFL204	0.2
SAPFL201	12	81	63.5	59	14	7.1	4	49	28.6	6.5	M6	SA201	PFL204	0.2



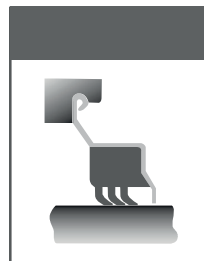
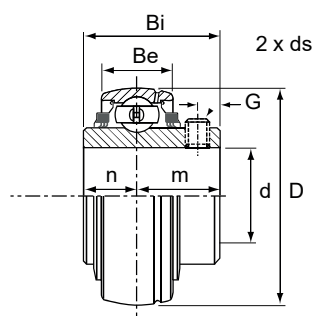
Unit NO.	Dimensions(mm/in.)										Bolt Size mm/in.	Bearing NO.	Housing NO.	Weight(kg)
	d	h	a	e	b	s	g	w	B	n				
SBPP209-28	1-3/4	1-27/32	6-9/64	5-3/64	1-25/32	33/64	0.236	3-41/64	1.622	0.402	7/16	SB209-28	PP209	1.02
SBPP209-27	1-11/16	1-27/32	6-9/64	5-3/64	1-25/32	33/64	0.236	3-41/64	1.622	0.402	7/16	SB209-27	PP209	1.02
SBPP209-26	1-5/8	1-27/32	6-9/64	5-3/64	1-25/32	33/64	0.236	3-41/64	1.622	0.402	7/16	SB209-26	PP209	1.02
SBPP209	45	46.8	156	128	45	13	6	92.3	41.2	10.2	M12	SB209	PP209	1.02
SBPP208-25	1-9/16	1-23/32	5-53/64	4-47/64	1-11/16	33/64	0.197	3-25/64	1.3386	0.354	7/16	SB208-25	PP208	0.76
SBPP208-24	1-1/2	1-23/32	5-53/64	4-47/64	1-11/16	33/64	0.197	3-25/64	1.3386	0.354	7/16	SB208-24	PP208	0.76
SBPP208	40	43.7	148	120	43	13	5	86.2	34	9	M12	SB208	PP208	0.76
SBPP207-23	1-7/16	1-9/16	5-5/64	4-5/32	1-21/32	29/64	0.181	3-1/8	1.2598	0.3346	3/8	SB207-23	PP207	0.63
SBPP207-22	1-3/8	1-9/16	5-5/64	4-5/32	1-21/32	29/64	0.181	3-1/8	1.2598	0.3346	3/8	SB207-22	PP207	0.63
SBPP207-21	1-5/16	1-9/16	5-5/64	4-5/32	1-21/32	29/64	0.181	3-1/8	1.2598	0.3346	3/8	SB207-21	PP207	0.63
SBPP207-20	1-1/4	1-9/16	5-5/64	4-5/32	1-21/32	29/64	0.181	3-1/8	1.2598	0.3346	3/8	SB207-20	PP207	0.63
SBPP207	35	39.7	129	106	42	11.5	4.6	78	32	8.5	M10	SB207	PP207	0.63
SBPP206-20	1-1/4	1-5/16	4-39/64	3-47/64	1-1/2	29/64	0.157	2-39/64	1.1811	0.315	3/8	SB206-20	PP206	0.42
SBPP206-19	1-3/16	1-5/16	4-39/64	3-47/64	1-1/2	29/64	0.157	2-39/64	1.1811	0.315	3/8	SB206-19	PP206	0.42
SBPP206-18	1-1/8	1-5/16	4-39/64	3-47/64	1-1/2	29/64	0.157	2-39/64	1.1811	0.315	3/8	SB206-18	PP206	0.42
SBPP206-17	1-1/16	1-5/16	4-39/64	3-47/64	1-1/2	29/64	0.157	2-39/64	1.1811	0.315	3/8	SB206-17	PP206	0.42
SBPP206	30	33.3	117	95	38	11.5	4	66.3	30	8	M10	SB206	PP206	0.42
SBPP205-16	1	1-1/8	4-1/4	3-25/64	1-1/4	29/64	0.157	2-15/64	1.063	0.2953	3/8	SB205-16	PP205	0.28
SBPP205-15	15/16	1-1/8	4-1/4	3-25/64	1-1/4	29/64	0.157	2-15/64	1.063	0.2953	3/8	SB205-15	PP205	0.28
SBPP205-14	7/8	1-1/8	4-1/4	3-25/64	1-1/4	29/64	0.157	2-15/64	1.063	0.2953	3/8	SB205-14	PP205	0.28
SBPP205-13	13/16	1-1/8	4-1/4	3-25/64	1-1/4	29/64	0.157	2-15/64	1.063	0.2953	3/8	SB205-13	PP205	0.28
SBPP205	25	28.6	108	86	32	11.5	4	56.6	27	7.5	M10	SB205	PP205	0.28
SBPP204-12	3/4	1	3-27/32	2-63/64	1-1/4	3/8	0.126	1-63/64	0.9843	0.2756	5/16	SB204-12	PP204	0.22
SBPP204	20	25.4	98	76	32	9.5	3.2	50.5	25	7	M8	SB204	PP204	0.22
SBPP203-11	11/16	7/8	3-3/8	2-43/64	63/64	3/8	0.126	1-23/32	0.8661	0.2362	15/16	SB203-11	PP204	0.14
SBPP203	17	7/8	3-3/8	2-43/64	63/64	3/8	0.126	1-23/32	0.8661	0.2362	15/16	SB203	PP204	0.14
SBPP202-10	5/8	7/8	3-3/8	2-43/64	63/64	3/8	0.126	1-23/32	0.8661	0.2362	15/16	SB202-10	PP204	0.14
SBPP202-9	9/16	7/8	3-3/8	2-43/64	63/64	3/8	0.126	1-23/32	0.8661	0.2362	15/16	SB202-9	PP204	0.14
SBPP202	15	7/8	3-3/8	2-43/64	63/64	3/8	0.126	1-23/32	0.8661	0.2362	15/16	SB202	PP204	0.14
SBPP201-8	1/2	7/8	3-3/8	2-43/64	63/64	3/8	0.126	1-23/32	0.8661	0.2362	15/16	SB201-8	PP204	0.14
SBPP201	12	22.2	86	68	25	9.5	3.2	43.8	22	6	M8	SB201	PP204	0.14



Bearing NO.	Dimensions(mm/in.)											Dynamic load ratings(N)	Static load ratings(N)	Weight(kg)
	d	D	B	B1	C	S	ds	G	F	B5	d3			
SA201	12	40	28.6	19.1	12	6.5	M6X1	4.8	3.4	13.5	28.6	9600	4600	0.12
SA 201-8	1/2	1.5748	1.126	0.752	0.4724	0.256	1/4-28UNF	0.189	0.134	0.531	1.126	9600	4600	0.12
SA202	15	40	28.6	19.1	12	6.5	M6X1	4.8	3.4	13.5	28.6	9600	4600	0.1
SA 202-9	9/16	1.5748	1.126	0.752	0.4724	0.256	1/4-28UNF	0.189	0.134	0.531	1.126	9600	4600	0.1
SA 202-10	5/8	1.5748	1.126	0.752	0.4724	0.256	1/4-28UNF	0.189	0.134	0.531	1.126	9600	4600	0.1
SA203	17	40	28.6	19.1	12	6.5	M6X1	4.8	3.4	13.5	28.6	9600	4600	0.09
SA 203-11	11/16	1.5748	1.126	0.752	0.4724	0.256	1/4-28UNF	0.189	0.134	0.531	1.126	9600	4600	0.09
SA204	20	47	31	21.5	14	7.5	M6X1	4.8	4.2	13.5	33.3	12800	6600	0.16
SA 204-12	3/4	1.8504	1.22	0.8465	0.5512	0.295	1/4-28UNF	0.189	0.165	0.531	1.311	12800	6600	0.16
SA205	25	52	31	21.5	15	7.5	M6X1	4.8	4.3	13.5	38.1	14000	7850	0.2
SA 205-13	13/16	2.0472	1.22	0.8465	0.5906	0.295	1/4-28UNF	0.189	0.169	0.531	1.5	14000	7850	0.22
SA 205-14	7/8	2.0472	1.22	0.8465	0.5906	0.295	1/4-28UNF	0.189	0.169	0.531	1.5	14000	7850	0.21
SA 205-15	15/16	2.0472	1.22	0.8465	0.5906	0.295	1/4-28UNF	0.189	0.169	0.531	1.5	14000	7850	0.21
SA 205-16	1	2.0472	1.22	0.8465	0.5906	0.295	1/4-28UNF	0.189	0.169	0.531	1.5	14000	7850	0.2
SA206	30	62	35.7	23.8	16	9	M8X1	6	5	15.9	44.5	19450	11250	0.3
SA 206-17	1-1/16	2.4409	1.406	0.937	0.6299	0.354	5/16-24UNF	0.236	0.197	0.626	1.752	19450	11250	0.32
SA 206-18	1-1/8	2.4409	1.406	0.937	0.6299	0.354	5/16-24UNF	0.236	0.197	0.626	1.752	19450	11250	0.31
SA 206-19	1-3/16	2.4409	1.406	0.937	0.6299	0.354	5/16-24UNF	0.236	0.197	0.626	1.752	19450	11250	0.3
SA 206-20	1-1/4	2.4409	1.406	0.937	0.6299	0.354	5/16-24UNF	0.236	0.197	0.626	1.752	19450	11250	0.29
SA207	35	72	38.9	25.4	17	9.5	M8X1	6.8	5.6	17.5	55.6	25700	15200	0.42
SA 207-20	1-1/4	2.8346	1.531	1	0.6693	0.374	5/16-24UNF	0.268	0.22	0.689	2.189	25700	15200	0.46
SA 207-21	1-5/16	2.8346	1.531	1	0.6693	0.374	5/16-24UNF	0.268	0.22	0.689	2.189	25700	15200	0.43
SA 207-22	1-3/8	2.8346	1.531	1	0.6693	0.374	5/16-24UNF	0.268	0.22	0.689	2.189	25700	15200	0.42
SA 207-23	1-7/16	2.8346	1.531	1	0.6693	0.374	5/16-24UNF	0.268	0.22	0.689	2.189	25700	15200	0.41
SA208	40	80	43.7	30.2	18	11	M8X1	6.8	5.9	18.3	60.3	29500	18100	0.6
SA 208-24	1-1/2	3.1496	1.721	1.189	0.7087	0.433	5/16-24UNF	0.268	0.232	0.72	2.374	29500	18100	0.58
SA 208-25	1-9/16	3.1496	1.721	1.189	0.7087	0.433	5/16-24UNF	0.268	0.232	0.72	2.374	29500	18100	0.6
SA209	45	85	43.7	30.2	19	11	M8X1	6.8	6.1	18.3	63.5	32700	20900	0.64
SA 209-26	1-5/8	3.3465	1.721	1.189	0.748	0.433	5/16-24UNF	0.268	0.24	0.72	2.5	32700	20900	0.64
SA 209-27	1-11/16	3.3465	1.721	1.189	0.748	0.433	5/16-24UNF	0.268	0.24	0.72	2.5	32700	20900	0.64
SA 209-28	1-3/4	3.3465	1.721	1.189	0.748	0.433	5/16-24UNF	0.268	0.24	0.72	2.5	32700	20900	0.64
SA210	50	90	43.7	30.2	20	11	M8X1	6.8	6.5	18.3	69.9	35000	23200	0.72
SA 210-29	1-13/16	3.5433	1.721	1.189	0.7874	0.433	5/16-24UNF	0.268	0.265	0.72	2.752	35000	23200	0.72
SA 210-30	1-7/8	3.5433	1.721	1.189	0.7874	0.433	5/16-24UNF	0.268	0.265	0.72	2.752	35000	23200	0.72
SA 210-31	1-15/16	3.5433	1.721	1.189	0.7874	0.433	5/16-24UNF	0.268	0.265	0.72	2.752	35000	23200	0.72
SA 210-32		3.5433	1.721	1.189	0.7874	0.433	5/16-24UNF	0.268	0.265	0.72	2.752	35000	23200	0.72
SA211	55	100	48.4	32.5	21	12	M10X1	8	7	20.7	76.2	43500	29200	1
SA 211-32	2	3.937	1.906	1.2795	0.8268	0.472	3/8-24UNF	0.315	0.276	0.815	3	43500	29200	1
SA 211-33	2-1/16	3.937	1.906	1.2795	0.8268	0.472	3/8-24UNF	0.315	0.276	0.815	3	43500	29200	1
SA 211-34	2-1/8	3.937	1.906	1.2795	0.8268	0.472	3/8-24UNF	0.315	0.276	0.815	3	43500	29200	1
SA 211-35	2-3/16	3.937	1.906	1.2795	0.8268	0.472	3/8-24UNF	0.315	0.276	0.815	3	43500	29200	1
SA212	60	110	53.1	37.2	22	13.5	M10X1	8	7.4	22.3	84.2	47700	32900	1.34
SA 212-36	2-1/4	4.3307	2.091	1.4646	0.8661	0.532	3/8-24UNF	0.315	0.291	0.878	3.315	47700	32900	1.34
SA 212-37	2-5/16	4.3307	2.091	1.4646	0.8661	0.532	3/8-24UNF	0.315	0.291	0.878	3.315	47700	32900	1.34
SA 212-38	2-3/8	4.3307	2.091	1.4646	0.8661	0.532	3/8-24UNF	0.315	0.291	0.878	3.315	47700	32900	1.34
SA 212-39	2-7/16	4.3307	2.091	1.4646	0.8661	0.532	3/8-24UNF	0.315	0.291	0.878	3.315	47700	32900	1.34

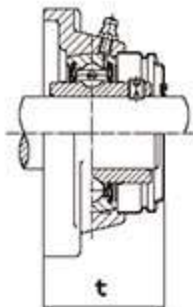
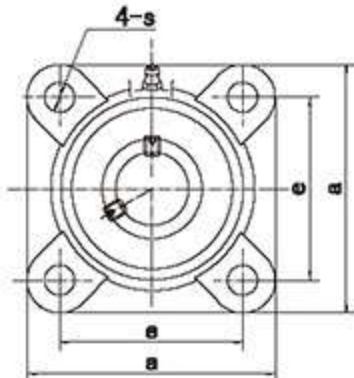
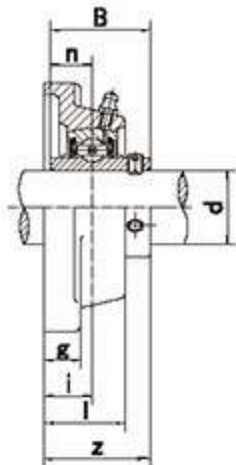


Bearing NO.	Dimensions(mm/in.)									Dynamic load ratings(N)	Static load ratings(N)	Weight(kg)
	d	D	B	C	S	S1	ds	F	G			
SB201	12	40	22	12	6	16	M5X0.8	3.4	4.5	9600	4600	0.1
SB 201-8	1/2	1.5748	0.8661	0.4724	0.236	0.63	10-32UNF	0.134	0.177	9600	4600	0.1
SB202	15	40	22	12	6	16	M5X0.8	3.4	4.5	9600	4600	0.1
SB 202-9	9/16	1.5748	0.8661	0.4724	0.236	0.63	10-32UNF	0.134	0.177	9600	4600	0.1
SB 202-10	5/8	1.5748	0.8661	0.4724	0.236	0.63	10-32UNF	0.134	0.177	9600	4600	0.1
SB203	17	40	22	12	6	16	M5X0.8	3.4	4.5	9600	4600	0.09
SB 203-11	11/16	1.5748	0.8661	0.4724	0.236	0.63	10-32UNF	0.134	0.177	9600	4600	0.09
SB204	20	47	25	14	7	18	M6X1	4.2	4.5	12800	6600	0.13
SB 204-12	3/4	1.8504	0.9843	0.5512	0.276	0.709	1/4-28UNF	0.165	0.177	12800	6600	0.14
SB205	25	52	27	15	7.5	19.5	M6X1	4.3	5.5	14000	7850	0.16
SB 205-13	13/16	2.0472	1.063	0.5906	0.295	0.768	1/4-28UNF	0.169	0.217	14000	7850	0.19
SB 205-14	7/8	2.0472	1.063	0.5906	0.295	0.768	1/4-28UNF	0.169	0.217	14000	7850	0.18
SB 205-15	15/16	2.0472	1.063	0.5906	0.295	0.768	1/4-28UNF	0.169	0.217	14000	7850	0.17
SB 205-16	1	2.0472	1.063	0.5906	0.295	0.768	1/4-28UNF	0.169	0.217	14000	7850	0.16
SB206	30	62	30	16	8	22	M6X1	5	6	19450	11250	0.25
SB 206-17	1-1/16	2.4409	1.1811	0.6299	0.315	0.866	1/4-28UNF	0.197	0.236	19450	11250	0.28
SB 206-18	1-1/8	2.4409	1.1811	0.6299	0.315	0.866	1/4-28UNF	0.197	0.236	19450	11250	0.26
SB 206-19	1-3/16	2.4409	1.1811	0.6299	0.315	0.866	1/4-28UNF	0.197	0.236	19450	11250	0.25
SB 206-20	1-1/4	2.4409	1.1811	0.6299	0.315	0.866	1/4-28UNF	0.197	0.236	19450	11250	0.24
SB207	35	72	32	17	8.5	23.5	M8X1	5.6	6.5	25700	15200	0.36
SB 207-20	1-1/4	2.8346	1.2598	0.6693	0.335	0.925	5/16-24UNF	0.22	0.256	25700	15200	0.41
SB 207-21	1-5/16	2.8346	1.2598	0.6693	0.335	0.925	5/16-24UNF	0.22	0.256	25700	15200	0.39
SB 207-22	1-3/8	2.8346	1.2598	0.6693	0.335	0.925	5/16-24UNF	0.22	0.256	25700	15200	0.36
SB 207-23	1-7/16	2.8346	1.2598	0.6693	0.335	0.925	5/16-24UNF	0.22	0.256	25700	15200	0.35
SB208	40	80	34	18	9	25	M8X1	5.9	7	29500	18100	0.45
SB 208-24	1-1/2	3.1496	1.3386	0.7087	0.354	0.984	5/16-24UNF	0.232	0.276	29500	18100	0.43
SB 208-25	1-9/16	3.1496	1.3386	0.7087	0.354	0.984	5/16-24UNF	0.232	0.276	29500	18100	0.45
SB209	45	85	41.2	19	10.2	31	M8X1	6.1	8.2	32700	20900	0.54
SB 209-26	1-5/8	3.3465	1.622	0.748	0.402	1.22	5/16-24UNF	0.24	0.323	32700	20900	0.54
SB 209-27	1-11/16	3.3465	1.622	0.748	0.402	1.22	5/16-24UNF	0.24	0.323	32700	20900	0.54
SB 209-28	1-3/4	3.3465	1.622	0.748	0.402	1.22	5/16-24UNF	0.24	0.323	32700	20900	0.54
SB210	50	90	43.5	20	10.9	32.6	M10X1	6.5	9.2	35000	23200	0.62
SB 210-29	1-13/16	3.5433	1.7126	0.7874	0.429	1.283	3/8-24UNF	0.256	0.362	35000	23200	0.62
SB 210-30	1-7/8	3.5433	1.7126	0.7874	0.429	1.283	3/8-24UNF	0.256	0.362	35000	23200	0.62
SB 210-31	1-15/16	3.5433	1.7126	0.7874	0.429	1.283	3/8-24UNF	0.256	0.362	35000	23200	0.62
SB 210-32	2	3.5433	1.7126	0.7874	0.429	1.283	3/8-24UNF	0.256	0.362	35000	23200	0.62
SB211	55	100	45.3	21	11.8	33.5	M10X1	7	9.8	43300	29200	0.81
SB 211-32	2	3.937	1.7835	0.8268	0.465	1.319	3/8-24UNF	0.276	0.386	43300	29200	0.81
SB 211-33	2-1/16	3.937	1.7835	0.8268	0.465	1.319	3/8-24UNF	0.276	0.386	43300	29200	0.81
SB 211-34	2-1/8	3.937	1.7835	0.8268	0.465	1.319	3/8-24UNF	0.276	0.386	43300	29200	0.81
SB 211-35	2-3/16	3.937	1.7835	0.8268	0.465	1.319	3/8-24UNF	0.276	0.386	43300	29200	0.81
SB212	60	110	53.7	22	14.9	38.8	M10X1	7.4	9.8	47700	32800	1.14
SB 212-36	2-1/4	4.3307	2.1142	0.8661	0.587	1.528	3/8-24UNF	0.291	0.386	47700	32800	1.14
SB 212-37	2-5/16	4.3307	2.1142	0.8661	0.587	1.528	3/8-24UNF	0.291	0.386	47700	32800	1.14
SB 212-38	2-3/8	4.3307	2.1142	0.8661	0.587	1.528	3/8-24UNF	0.291	0.386	47700	32800	1.14
SB 212-39	2-7/16	4.3307	2.1142	0.8661	0.587	1.528	3/8-24UNF	0.291	0.386	47700	32800	1.14



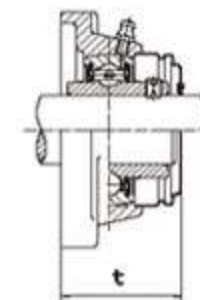
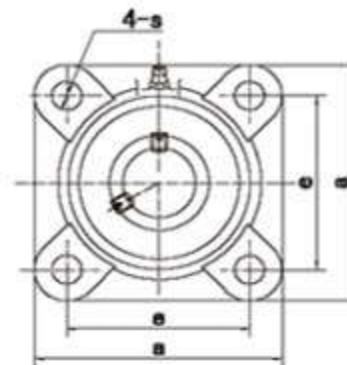
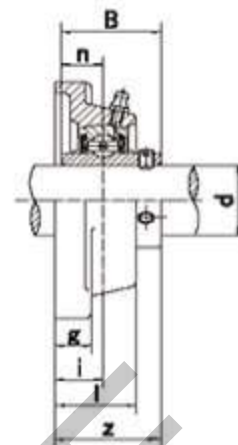
UC 200 (carga normal)

Soporte cojinete	Diam. eje		D	Bi	Be	n	m	G	ds		Carga nom. (kg)		Peso kgf
	d pulg	d mm							pulgadas	mm	dinam.	estat.	
UC 204		20	47	31.0	17	12.7	18.3	5		M6 x 0.75	1000	630	0.16
UC 204-12	3/4"								1/4" - 28UNF				0.16
UC 205		25	52	34.1	17	14.3	19.8	5		M6 x 0.75	1100	710	0.20
UC 205-16	1"								1/4" - 28UNF				0.20
UC 206		30	62	38.1	19	15.9	22.2	5		M6 x 0.75	1520	1020	0.32
UC 206-20	1.1/4"								1/4" - 28UNF				0.32
UC 207		35	72	42.9	20	17.5	25.4	7		M8 x 1.0	2010	1390	0.48
UC 207-20	1.1/4"								5/16" - 24UNF				0.54
UC 207-22	1.3/8"								5/16" - 24UNF				0.48
UC 208		40	80	49.2	22	19.0	30.2	8.0		M8 x 1.0	2560	1810	0.64
UC 208-24	1.1/2"								5/16" - 24UNF				0.68
UC 209		45	85	49.2	22	19.0	30.2	8.0		M8 x 1.0	2560	1810	0.68
UC 209-28	1.3/4"								5/16" - 24UNF				0.70
UC 210		50	90	51.6	24	19.0	32.6	10.0		M10x1.25	2750	2020	0.82
UC 210-32	2"								3/8" - 24UNF				0.80
UC 211		55	100	55.6	25	22.2	33.4	10.0		M10x1.25	3400	2550	1.11
UC 211-32	2"								3/8" - 24UNF				1.26
UC 212		60	110	65.1	27	25.4	39.7	10.0		M10x1.25	4100	3150	1.54
UC 212-36	2.1/4"								3/8" - 24UNF				1.67
UC 213		65	120	65.1	30	25.4	39.7	10.0		M10x1.25	4480	3470	1.86
UC 213-40	2.1/2"								3/8" - 24UNF				1.94
UC 214		70	125	74.6	30	30.2	44.4	12.0		M12x1.50	4870	3810	2.05
UC 214-44	2.3/4"								7/16" - 20UNF				2.06
UC 215		75	130	77.8	32	33.3	44.5	12.0		M12x1.50	5190	4190	2.12
UC 215-48	3"								7/16" - 20UNF				2.21
UC 216		80	140	82.6	33	33.3	49.3	12.0		M12x1.50	5700	4550	2.79
UC 218-56	3.1/2"		160	96.0	37	39.7	56.3	12.0	1/2" - 20UNF		7500	6170	4.46



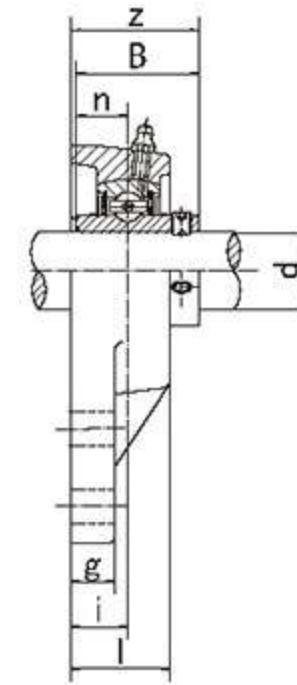
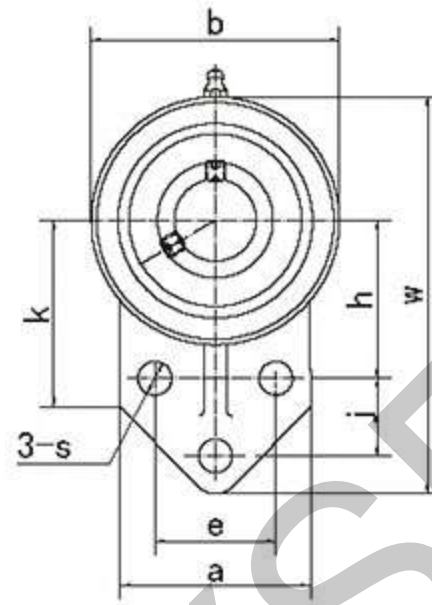
UCF-C₁(D₁)

Unit NO.	Dimensions(mm/in.)											Bolt Size mm/in.	Bearing NO.	Housing NO.	Weight(kg)
	d	a	e	i	g	l	s	z	t	n	B				
UCF 201-8	1/2	3-3/8	2-33/64	19/32	15/32	1	15/32	1-5/16	1-31/64	0.58	1.2205	0.5	3/8	UC201-8	F201
UCF201	12	86	64	15	12	25.5	12	33.3	37.5	0.59	31	12.7	M10	UC201	F201
UCF202	15	86	64	15	12	25.5	12	33.3	37.5	0.58	31	12.7	M10	UC202	F202
UCF 202-9	9/16	3-3/8	2-33/64	19/32	15/32	1	15/32	1-5/16	1-31/64	0.58	1.2205	0.5	3/8	UC202-9	F202
UCF 202-10	5/8	3-3/8	2-33/64	19/32	15/32	1	15/32	1-5/16	1-31/64	0.58	1.2205	0.5	3/8	UC202-10	F202
UCF 203-11	11/16	3-3/8	2-33/64	19/32	15/32	1	15/32	1-5/16	1-31/64	0.56	1.2205	0.5	3/8	UC203-11	F203
UCF203	17	86	64	15	12	25.5	12	33.3	37.5	0.57	31	12.7	M10	UC203	F203
UCF204	20	86	64	15	12	25.5	12	33.3	37.5	0.55	31	12.7	M10	UC204	F204
UCF205	25	95	70	16	14	27	12	35.8	40	0.73	34.1	14.3	M10	UC205	F205
UCF 204-12	3/4	3-3/8	2-33/64	19/32	15/32	1	15/32	1-5/16	1-31/64	0.55	1.2205	0.5	3/8	UC204-12	F204
UCF 205-14	7/8	3-3/4	2-3/4	5/8	35/64	1-1/16	15/32	1-13/32	1-9/16	0.76	1.3425	0.563	3/8	UC205-14	F205
UCF 205-13	13/16	3-3/4	2-3/4	5/8	35/64	1-1/16	15/32	1-13/32	1-9/16	0.77	1.3425	0.563	3/8	UC205-13	F205
UCF 205-15	15/16	3-3/4	2-3/4	5/8	35/64	1-1/16	15/32	1-13/32	1-9/16	0.74	1.3425	0.563	3/8	UC205-15	F205
UCF206	30	108	83	18	14	31	12	40.2	44.5	1.02	38.1	15.9	M10	UC206	F206
UCF 205-16	1	3-3/4	2-3/4	5/8	35/64	1-1/16	15/32	1-13/32	1-9/16	0.73	1.3425	0.563	3/8	UC205-16	F205
UCF 206-17	1-1/16	4-1/4	3-17/64	45/64	35/64	1-7/32	15/32	1-19/32	1-3/4	1.03	1.5	0.626	3/8	UC206-17	F206
UCF 206-18	1-1/8	4-1/4	3-17/64	45/64	35/64	1-7/32	15/32	1-19/32	1-3/4	1.04	1.5	0.626	3/8	UC206-18	F206
UCF 206-19	1-3/16	4-1/4	3-17/64	45/64	35/64	1-7/32	15/32	1-19/32	1-3/4	1.02	1.5	0.626	3/8	UC206-19	F206
UCF207	35	117	92	19	16	34	14	44.4	48.5	1.33	42.9	17.5	M12	UC207	F207
UCF 206-20	1-1/4	4-1/4	3-17/64	45/64	35/64	1-7/32	15/32	1-19/32	1-3/4	1.01	1.5	0.626	3/8	UC206-20	F206
UCF 207-20	1-1/4	4-39/64	3-5/8	3/4	5/8	1-11/32	35/64	1-3/4	1-29/32	1.4	1.689	0.689	7/16	UC207-20	F207
UCF 207-21	1-5/16	4-39/64	3-5/8	3/4	5/8	1-11/32	35/64	1-3/4	1-29/32	1.37	1.689	0.689	7/16	UC207-21	F207
UCF 207-22	1-3/8	4-39/64	3-5/8	3/4	5/8	1-11/32	35/64	1-3/4	1-29/32	1.34	1.689	0.689	7/16	UC207-22	F207
UCF 207-23	1-7/16	4-39/64	3-5/8	3/4	5/8	1-11/32	35/64	1-3/4	1-29/32	1.31	1.689	0.689	7/16	UC207-23	F207
UCF 208-24	1-1/2	5-1/8	4-1/64	53/64	5/8	1-27/64	5/8	2-1/64	2-3/16	1.71	1.937	0.748	1/2	UC208-24	F208
UCF208	40	130	102	21	16	36	16	51.2	55.5	1.67	49.2	19	M14	UC208	F208
UCF 208-25	1-9/16	5-1/8	4-1/64	53/64	5/8	1-27/64	5/8	2-1/64	2-3/16	1.68	1.937	0.748	1/2	UC208-25	F208
UCF209	45	137	105	22	18	38	16	52.2	56.5	2	49.2	19	M14	UC209	F209
UCF 209-26	1-5/8	5-13/32	4-9/64	55/64	23/32	1-1/2	5/8	2-1/16	2-7/32	2.1	1.937	0.748	1/2	UC209-26	F209
UCF 209-27	1-11/16	5-13/32	4-9/64	55/64	23/32	1-1/2	5/8	2-1/16	2-7/32	2.06	1.937	0.748	1/2	UC209-27	F209
UCF 209-28	1-3/4	5-13/32	4-9/64	55/64	23/32	1-1/2	5/8	2-1/16	2-7/32	2.02	1.937	0.748	1/2	UC209-28	F209
UCF210	50	143	111	22	18	40	16	54.6	59.5	2.32	51.6	19	M14	UC210	F210
UCF 210-29	1-13/16	5-5/8	4-3/8	55/64	23/32	1-9/16	5/8	2-5/32	2-11/32	2.44	2.0315	0.748	1/2	UC210-29	F210
UCF 210-30	1-7/8	5-5/8	4-3/8	55/64	23/32	1-9/16	5/8	2-5/32	2-11/32	2.39	2.0315	0.748	1/2	UC210-30	F210
UCF 210-31	1-15/16	5-5/8	4-3/8	55/64	23/32	1-9/16	5/8	2-5/32	2-11/32	2.34	2.0315	0.748	1/2	UC210-31	F210
UCF 210-32	2	5-5/8	4-3/8	55/64	23/32	1-9/16	5/8	2-5/32	2-11/32	2.3	2.0315	0.748	1/2	UC210-32	F210
UCF 211-32	2	6-3/8	5-1/8	63/64	25/32	1-11/16	3/4	2-5/16	2-31/64	3.27	2.189	0.874	5/8	UC211-32	F211
UCF211	55	162	130	25	20	43	19	58.4	63	3.12	55.6	22.2	M16	UC211	F211
UCF 211-33	2-1/16	6-3/8	5-1/8	63/64	25/32	1-11/16	3/4	2-5/16	2-31/64	3.21	2.189	0.874	5/8	UC211-33	F211
UCF 211-34	2-1/8	6-3/8	5-1/8	63/64	25/32	1-11/16	3/4	2-5/16	2-31/64	3.17	2.189	0.874	5/8	UC211-34	F211
UCF 211-35	2-3/16	6-3/8	5-1/8	63/64	25/32	1-11/16	3/4	2-5/16	2-31/64	3.1	2.189	0.874	5/8	UC211-35	F211
UCF 212-36	2-1/4	6-57/64	5-5/8	1-9/64	25/32	1-57/64	3/4	2-45/64	2-57/64	4.08	2.563	1	5/8	UC212-36	F212
UCF212	60	175	143	29	20	48	19	68.7	73.5	3.95	65.1	25.4	M16	UC212	F212
UCF 212-37	2-5/16	6-57/64	5-5/8	1-9/64	25/32	1-57/64	3/4	2-45/64	2-57/64	4	2.563	1	5/8	UC212-37	F212
UCF 212-38	2-3/8	6-57/64	5-5/8	1-9/64	25/32	1-57/64	3/4	2-45/64	2-57/64	3.93	2.563	1	5/8	UC212-38	F212
UCF 212-39	2-7/16	6-57/64	5-5/8	1-9/64	25/32	1-57/64	3/4	2-45/64	2-57/64	3.86	2.563	1	5/8	UC212-39	F212
UCF213	65	187	149	30	22	50	19	69.7	74.5	4.81	65.1	25.4	M16	UC213	F213
UCF 213-40	2-1/2	7-23/64	5-55/64	1-3/16	55/64	1-31/32	3/4	2-3/4	2-15/16	4.9	2.563	1	5/8	UC213-40	F213
UCF 213-41	2-9/16	7-23/64	5-55/64	1-3/16	55/64	1-31/32	3/4	2-3/4	2-15/16	4.81	2.563	1	5/8	UC213-41	F213
UCF 214-42	2-5/8	7-19/32	5-63/64	1-7/32	55/64	2-1/8	3/4	2-31/32	3-13/64	5.63	2.937	1.189	5/8	UC214-42	F214
UCF214	70	193	152	31	22	54	19	75.4	81.5	5.42	74.6	30.2	M16	UC214	F214
UCF 214-43	2-11/16	7-19/32	5-63/64	1-7/32	55/64	2-1/8	3/4	2-31/32	3-13/64	5.53	2.937	1.189	5/8	UC214-43	F214
UCF 214-44	2-3/4	7-19/32	5-63/64	1-7/32	55/64	2-1/8	3/4	2-31/32	3-13/64	5.43	2.937	1.189	5/8	UC214-44	F214
UCF215	75	200	159	34	22	56	19	78.5	83.5	5.94	77.8	33.3	M16	UC215	F215
UCF 215-45	2-13/16	7-7/8	6-17/64	1-11/32	55/64	2-7/32	3/4	3-3/32	3-9/32	5.94	3.063	1.311	5/8	UC215-45	F215
UCF 215-46	2-7/8	7-7/8	6-17/64	1-11/32	55/64	2-7/32	3/4	3-3/32	3-9/32	6.19	3.063	1.311	5/8	UC215-46	F215
UCF 215-47	2-15/16	7-7/8	6-17/64	1-11/32	55/64	2-7/32	3/4	3-3/32	3-9/32	6.08	3.063	1.311	5/8	UC215-47	F215
UCF 215-48	3	7-7/8	6-17/64	1-11/32	55/64	2-7/32	3/4	3-3/32	3-9/32	5.88	3.063	1.311	5/8	UC215-48	F215
UCF 216-49	3-1/16	8-3/16	6-1/2	1-11/32	55/64	2-9/32	29/32	3-9/32	3-31/64	7.12	3.252	1.311	3/4	UC216-49	F216
UCF216	80	208	165	34	22	58	23	83.3	88.5	6.94	82.6	33.3	M20	UC216	F216
UCF 216-50	3-1/8	8-3/16	6-1/2	1-11/32	55/64	2-9/32	29/32	3-9/32	3-31/64	6.99	3.252	1.311	3/4	UC216-50	F216
UCF 216-51	3-3/16	8-3/16	6-1/2	1-11/32	55/64	2-9/32	29/32	3-9/32	3-31/64	6.86	3.252	1.311	3/4	UC216-51	F216
UCF217	85	220	175	36	24	63	23	87.6	92.6	8.67	85.7	34.1	M20	UC217	F217
UCF 217-52	3-1/4	8-21/23	6-57/64	1-27/64	15/16	2-15/32	29/32	3-7/16	3-41/64	8.79	3.374	1.343	3/4	UC217-52	F217
UCF 217-53	3-5/16	8-21/23	6-57/64	1-27/64	15/16	2-15/32	29/32	3-7/16	3-41/64	8.75	3.374	1.343	3/4	UC217-53	F217
UCF 217-55	3-7/16	8-21/23	6-57/64	1-27/64	15/16	2-15/32	29/32	3-7/16	3-41/64	8.46	3.374	1.343	3/4	UC217-55	F217
UCF 218-56	3-1/2	9-1/4	7-23/64	1-37/64	15/16	2-11/16	29/32	3-25/32	4	10.73	3.7795	1.563	3/4	UC218-56	F218
UCF218	90	235	187	40	24	68	23	96.3	101.5	10.62	96	39.7	M20	UC218	F218

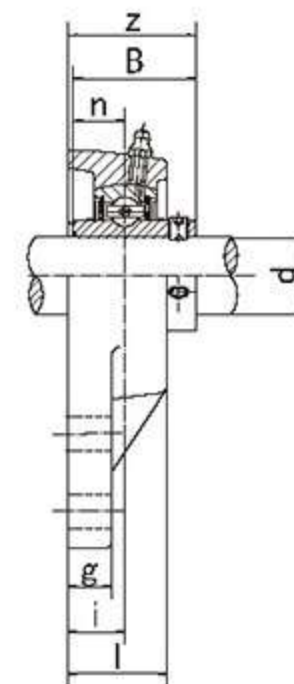
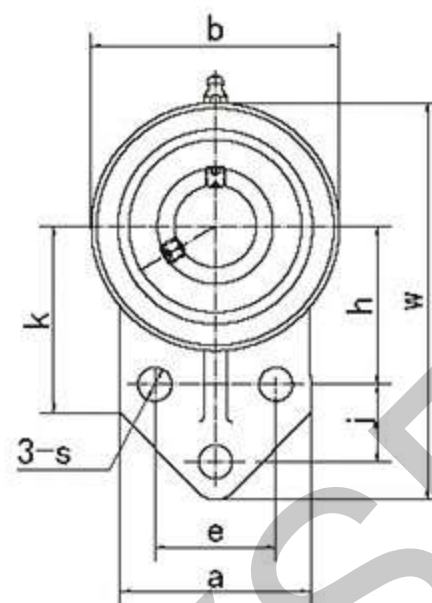


UCF-C₁(D₁)

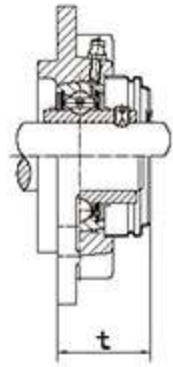
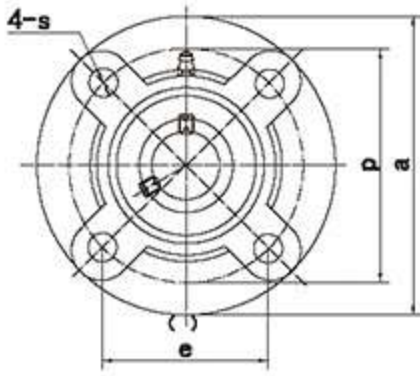
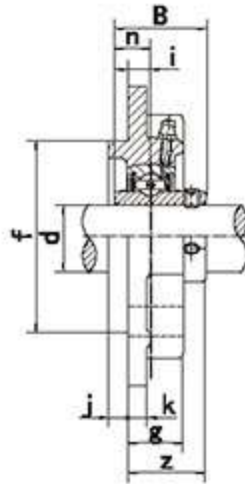
Unit NO.	Dimensions(mm/in.)											Bolt Size mm/in.	Bearing NO.	Housing NO.	Weight(kg)
	d	a	e	i	g	l	s	z	t	B	n				
SS-UCF 218-56	3-1/2	9-1/4	7-23/64	1-37/64	15/16	2-11/16	29/32	3-25/32	4	3.7795	1.563	3/4	SS-UC218-56	F218	10.73
SS-UCF218	90	235	187	40	24	68	23	96.3	101.5	96	39.7	M20	SS-UC218	F218	10.62
SS-UCF 217-55	3-7/16	8-21/23	6-57/64	1-27/64	15/16	2-15/32	29/32	3-7/16	3-41/64	3.374	1.343	3/4	SS-UC217-55	F217	8.46
SS-UCF 217-53	3-5/16	8-21/23	6-57/64	1-27/64	15/16	2-15/32	29/32	3-7/16	3-41/64	3.374	1.343	3/4	SS-UC217-53	F217	8.75
SS-UCF 217-52	3-1/4	8-21/23	6-57/64	1-27/64	15/16	2-15/32	29/32	3-7/16	3-41/64	3.374	1.343	3/4	SS-UC217-52	F217	8.79
SS-UCF217	85	220	175	36	24	63	23	87.6	92.6	85.7	34.1	M20	SS-UC217	F217	8.67
SS-UCF 216-51	3-3/16	8-3/16	6-1/2	1-11/32	55/64	2-9/32	29/32	3-9/32	3-31/64	3.252	1.311	3/4	SS-UC216-51	F216	6.86
SS-UCF 216-50	3-1/8	8-3/16	6-1/2	1-11/32	55/64	2-9/32	29/32	3-9/32	3-31/64	3.252	1.311	3/4	SS-UC216-50	F216	6.99
SS-UCF 216-49	3-1/16	8-3/16	6-1/2	1-11/32	55/64	2-9/32	29/32	3-9/32	3-31/64	3.252	1.311	3/4	SS-UC216-49	F216	7.12
SS-UCF216	80	208	165	34	22	58	23	83.3	88.5	82.6	33.3	M20	SS-UC216	F216	6.94
SS-UCF 215-48	3	7-7/8	6-17/64	1-11/32	55/64	2-7/32	3/4	3-3/32	3-9/32	3.063	1.311	5/8	SS-UC215-48	F215	5.88
SS-UCF 215-47	2-15/16	7-7/8	6-17/64	1-11/32	55/64	2-7/32	3/4	3-3/32	3-9/32	3.063	1.311	5/8	SS-UC215-47	F215	6.08
SS-UCF 215-46	2-7/8	7-7/8	6-17/64	1-11/32	55/64	2-7/32	3/4	3-3/32	3-9/32	3.063	1.311	5/8	SS-UC215-46	F215	6.19
SS-UCF 215-45	2-13/16	7-7/8	6-17/64	1-11/32	55/64	2-7/32	3/4	3-3/32	3-9/32	3.063	1.311	5/8	SS-UC215-45	F215	5.94
SS-UCF215	75	200	159	34	22	56	19	78.5	83.5	77.8	33.3	M16	SS-UC215	F215	5.94
SS-UCF 214-44	2-3/4	7-19/32	5-63/64	1-7/32	55/64	2-1/8	3/4	2-31/32	3-13/64	2.937	1.189	5/8	SS-UC214-44	F214	5.43
SS-UCF 214-43	2-11/16	7-19/32	5-63/64	1-7/32	55/64	2-1/8	3/4	2-31/32	3-13/64	2.937	1.189	5/8	SS-UC214-43	F214	5.53
SS-UCF 214-42	2-5/8	7-19/32	5-63/64	1-7/32	55/64	2-1/8	3/4	2-31/32	3-13/64	2.937	1.189	5/8	SS-UC214-42	F214	5.63
SS-UCF214	70	193	152	31	22	54	19	75.4	81.5	74.6	30.2	M16	SS-UC214	F214	5.42
SS-UCF 213-41	2-9/16	7-23/64	5-55/64	1-3/16	55/64	1-31/32	3/4	2-3/4	2-15/16	2.563	1	5/8	SS-UC213-41	F213	4.81



Unit NO.	Dimensions(mm/in.)															Bolt Size mm/in.	Bearing NO.	Housing NO.	Weight(kg)
	d	w	b	k	a	l	s	g	h	j	e	i	z	B	n				
SS-UCFB 213-41	2-9/16	9-39/64	6-7/64	3-45/64	3-15/16	1-31/32	35/64	25/32	3-5/8	2-23/64	2-3/4	1-3/16	2-3/4	2.563	1	7/16	SS-UC213-41	FB213	4.968
SS-UCFB 213-40	2-1/2	9-39/64	6-7/64	3-45/64	3-15/16	1-31/32	35/64	25/32	3-5/8	2-23/64	2-3/4	1-3/16	2-3/4	2.563	1	7/16	SS-UC213-40	FB213	5.058
SS-UCFB213	65	244	155	94	100	50	14	20	92	60	70	30	69.7	65.1	25.4	M12	SS-UC213	FB213	4.968
SS-UCFB 212-39	2-7/16	8-25/32	5-1/2	3-35/64	3-45/64	1-7/8	35/64	45/64	3-5/16	2-11/64	2-19/32	1-9/64	2-23/32	2.563	1	7/16	SS-UC212-39	FB212	3.779
SS-UCFB 212-38	2-3/8	8-25/32	5-1/2	3-35/64	3-45/64	1-7/8	35/64	45/64	3-5/16	2-11/64	2-19/32	1-9/64	2-23/32	2.563	1	7/16	SS-UC212-38	FB212	3.849
SS-UCFB 212-37	2-5/16	8-25/32	5-1/2	3-35/64	3-45/64	1-7/8	35/64	45/64	3-5/16	2-11/64	2-19/32	1-9/64	2-23/32	2.563	1	7/16	SS-UC212-37	FB212	3.919
SS-UCFB 212-36	2-1/4	8-25/32	5-1/2	3-35/64	3-45/64	1-7/8	35/64	45/64	3-5/16	2-11/64	2-19/32	1-9/64	2-23/32	2.563	1	7/16	SS-UC212-36	FB212	3.999
SS-UCFB212	60	223	140	90	94	48	14	18	84	55	66	29	68.7	65.1	25.4	M12	SS-UC212	FB212	3.869
SS-UCFB 211-35	2-3/16	8-5/32	5-1/8	3-25/64	3-35/64	1-11/16	35/64	45/64	3-5/64	1-31/32	2-7/16	63/64	2-5/16	2.189	0.874	7/16	SS-UC211-35	FB211	3.075
SS-UCFB 211-34	2-1/8	8-5/32	5-1/8	3-25/64	3-35/64	1-11/16	35/64	45/64	3-5/64	1-31/32	2-7/16	63/64	2-5/16	2.189	0.874	7/16	SS-UC211-34	FB211	3.145
SS-UCFB 211-33	2-1/16	8-5/32	5-1/8	3-25/64	3-35/64	1-11/16	35/64	45/64	3-5/64	1-31/32	2-7/16	63/64	2-5/16	2.189	0.874	7/16	SS-UC211-33	FB211	3.185
SS-UCFB 211-32	2	8-5/32	5-1/8	3-25/64	3-35/64	1-11/16	35/64	45/64	3-5/64	1-31/32	2-7/16	63/64	2-5/16	2.189	0.874	7/16	SS-UC211-32	FB211	3.245
SS-UCFB211	55	207	130	86	90	43	14	18	78	50	62	25	58.4	55.6	22.2	M12	SS-UC211	FB211	3.095
SS-UCFB 210-32	2	7-1/4	4-13/32	3-7/32	3-3/8	1-37/64	15/32	23/32	2-43/64	1-13/16	2-9/32	55/64	2-5/32	2.0315	0.748	3/8	SS-UC210-32	FB210	2.192
SS-UCFB 210-31	1-15/16	7-1/4	4-13/32	3-7/32	3-3/8	1-37/64	15/32	23/32	2-43/64	1-13/16	2-9/32	55/64	2-5/32	2.0315	0.748	3/8	SS-UC210-31	FB210	2.232
SS-UCFB 210-30	1-7/8	7-1/4	4-13/32	3-7/32	3-3/8	1-37/64	15/32	23/32	2-43/64	1-13/16	2-9/32	55/64	2-5/32	2.0315	0.748	3/8	SS-UC210-30	FB210	2.282
SS-UCFB 210-29	1-13/16	7-1/4	4-13/32	3-7/32	3-3/8	1-37/64	15/32	23/32	2-43/64	1-13/16	2-9/32	55/64	2-5/32	2.0315	0.748	3/8	SS-UC210-29	FB210	2.332
SS-UCFB210	50	184	112	82	86	40	12	18	68	46	58	22	54.6	51.6	19	M10	SS-UC210	FB210	2.212
SS-UCFB 209-28	1-3/4	6-27/32	4-3/16	3	3-5/32	1-1/2	15/32	23/32	2-9/16	1-11/16	2-1/8	55/64	2-1/16	1.937	0.748	3/8	SS-UC209-28	FB209	1.944
SS-UCFB 209-27	1-11/16	6-27/32	4-3/16	3	3-5/32	1-1/2	15/32	23/32	2-9/16	1-11/16	2-1/8	55/64	2-1/16	1.937	0.748	3/8	SS-UC209-27	FB209	1.984

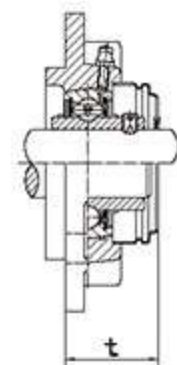
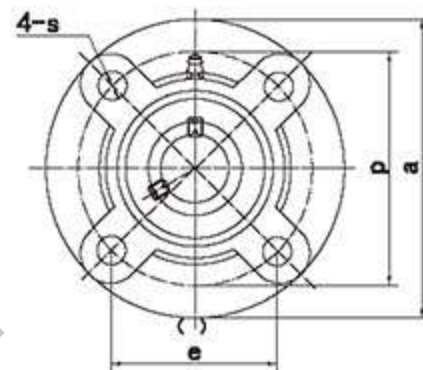
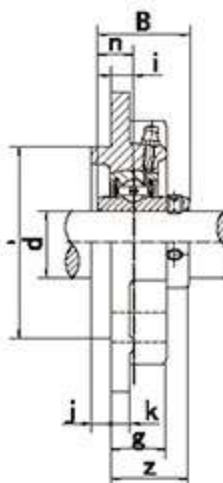


Unit NO.	Dimensions(mm/in.)															Bolt Size mm/in.	Bearing NO.	Housing NO.	Weight(kg)
	d	w	b	k	a	l	s	g	h	j	e	i	z	B	n				
SS-UCFB 213-41	2-9/16	9-39/64	6-7/64	3-45/64	3-15/16	1-31/32	35/64	25/32	3-5/8	2-23/64	2-3/4	1-3/16	2-3/4	2.563	1	7/16	SS-UC213-41	FB213	4.968
SS-UCFB 213-40	2-1/2	9-39/64	6-7/64	3-45/64	3-15/16	1-31/32	35/64	25/32	3-5/8	2-23/64	2-3/4	1-3/16	2-3/4	2.563	1	7/16	SS-UC213-40	FB213	5.058
SS-UCFB213	65	244	155	94	100	50	14	20	92	60	70	30	69.7	65.1	25.4	M12	SS-UC213	FB213	4.968
SS-UCFB 212-39	2-7/16	8-25/32	5-1/2	3-35/64	3-45/64	1-7/8	35/64	45/64	3-5/16	2-11/64	2-19/32	1-9/64	2-23/32	2.563	1	7/16	SS-UC212-39	FB212	3.779
SS-UCFB 212-38	2-3/8	8-25/32	5-1/2	3-35/64	3-45/64	1-7/8	35/64	45/64	3-5/16	2-11/64	2-19/32	1-9/64	2-23/32	2.563	1	7/16	SS-UC212-38	FB212	3.849
SS-UCFB 212-37	2-5/16	8-25/32	5-1/2	3-35/64	3-45/64	1-7/8	35/64	45/64	3-5/16	2-11/64	2-19/32	1-9/64	2-23/32	2.563	1	7/16	SS-UC212-37	FB212	3.919
SS-UCFB 212-36	2-1/4	8-25/32	5-1/2	3-35/64	3-45/64	1-7/8	35/64	45/64	3-5/16	2-11/64	2-19/32	1-9/64	2-23/32	2.563	1	7/16	SS-UC212-36	FB212	3.999
SS-UCFB212	60	223	140	90	94	48	14	18	84	55	66	29	68.7	65.1	25.4	M12	SS-UC212	FB212	3.869
SS-UCFB 211-35	2-3/16	8-5/32	5-1/8	3-25/64	3-35/64	1-11/16	35/64	45/64	3-5/64	1-31/32	2-7/16	63/64	2-5/16	2.189	0.874	7/16	SS-UC211-35	FB211	3.075
SS-UCFB 211-34	2-1/8	8-5/32	5-1/8	3-25/64	3-35/64	1-11/16	35/64	45/64	3-5/64	1-31/32	2-7/16	63/64	2-5/16	2.189	0.874	7/16	SS-UC211-34	FB211	3.145
SS-UCFB 211-33	2-1/16	8-5/32	5-1/8	3-25/64	3-35/64	1-11/16	35/64	45/64	3-5/64	1-31/32	2-7/16	63/64	2-5/16	2.189	0.874	7/16	SS-UC211-33	FB211	3.185
SS-UCFB 211-32	2	8-5/32	5-1/8	3-25/64	3-35/64	1-11/16	35/64	45/64	3-5/64	1-31/32	2-7/16	63/64	2-5/16	2.189	0.874	7/16	SS-UC211-32	FB211	3.245
SS-UCFB211	55	207	130	86	90	43	14	18	78	50	62	25	58.4	55.6	22.2	M12	SS-UC211	FB211	3.095
SS-UCFB 210-32	2	7-1/4	4-13/32	3-7/32	3-3/8	1-37/64	15/32	23/32	2-43/64	1-13/16	2-9/32	55/64	2-5/32	2.0315	0.748	3/8	SS-UC210-32	FB210	2.192
SS-UCFB 210-31	1-15/16	7-1/4	4-13/32	3-7/32	3-3/8	1-37/64	15/32	23/32	2-43/64	1-13/16	2-9/32	55/64	2-5/32	2.0315	0.748	3/8	SS-UC210-31	FB210	2.232
SS-UCFB 210-30	1-7/8	7-1/4	4-13/32	3-7/32	3-3/8	1-37/64	15/32	23/32	2-43/64	1-13/16	2-9/32	55/64	2-5/32	2.0315	0.748	3/8	SS-UC210-30	FB210	2.282
SS-UCFB 210-29	1-13/16	7-1/4	4-13/32	3-7/32	3-3/8	1-37/64	15/32	23/32	2-43/64	1-13/16	2-9/32	55/64	2-5/32	2.0315	0.748	3/8	SS-UC210-29	FB210	2.332
SS-UCFB210	50	184	112	82	86	40	12	18	68	46	58	22	54.6	51.6	19	M10	SS-UC210	FB210	2.212
SS-UCFB 209-28	1-3/4	6-27/32	4-3/16	3	3-5/32	1-1/2	15/32	23/32	2-9/16	1-11/16	2-1/8	55/64	2-1/16	1.937	0.748	3/8	SS-UC209-28	FB209	1.944
SS-UCFB 209-27	1-11/16	6-27/32	4-3/16	3	3-5/32	1-1/2	15/32	23/32	2-9/16	1-11/16	2-1/8	55/64	2-1/16	1.937	0.748	3/8	SS-UC209-27	FB209	1.984



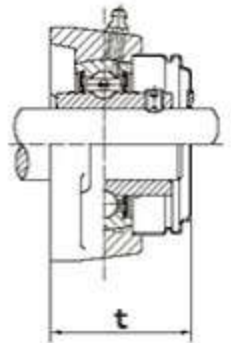
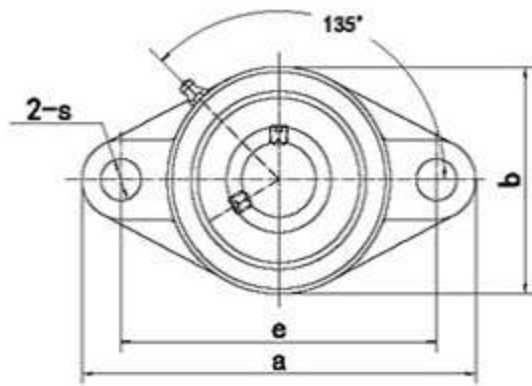
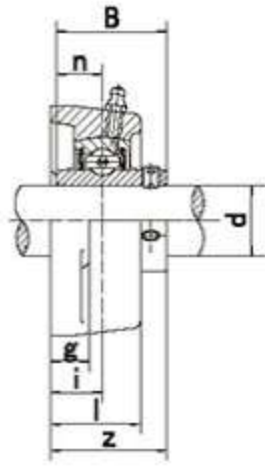
UCFC-C1(D1)

Unit NO.	Dimensions(mm/in.)														Bolt Size mm/in.	Bearing NO.	Housing NO.	Weight(kg)
	d	a	p	(e)	i	s	j	k	g	f	z	t	B	n				
UCFC201	12	100	78	55.1	10	12	5	7	20.5	62	28.3	32.5	31	12.7	M10	UC201	FC201	0.7
UCFC 201-8	1/2	3-15/16	3-5/64	2-11/64	25/64	15/32	13/64	9/32	13/16	2.4409	1-1/8	1-9/32	1.2205	0.5	3/8	UC201-8	FC201	0.69
UCFC202	15	100	78	55.1	10	12	5	7	20.5	62	28.3	32.5	31	12.7	M10	UC202	FC202	0.69
UCFC 202-10	5/8	3-15/16	3-5/64	2-11/64	25/64	15/32	13/64	9/32	13/16	2.4409	1-1/8	1-9/32	1.2205	0.5	3/8	UC202-10	FC202	0.69
UCFC 202-9	9/16	3-15/16	3-5/64	2-11/64	25/64	15/32	13/64	9/32	13/16	2.4409	1-1/8	1-9/32	1.2205	0.5	3/8	UC202-9	FC202	0.69
UCFC 203-11	11/16	3-15/16	3-5/64	2-11/64	25/64	15/32	13/64	9/32	13/16	2.4409	1-1/8	1-9/32	1.2205	0.5	3/8	UC203-11	FC203	0.67
UCFC203	17	100	78	55.1	10	12	5	7	20.5	62	28.3	32.5	31	12.7	M10	UC203	FC203	0.68
UCFC204	20	100	78	55.1	10	12	5	7	20.5	62	28.3	32.5	31	12.7	M10	UC204	FC204	0.66
UCFC 204-12	3/4	3-15/16	3-5/64	2-11/64	25/64	15/32	13/64	9/32	13/16	2.4409	1-1/8	1-9/32	1.2205	0.5	3/8	UC204-12	FC204	0.66
UCFC 205-13	13/16	4-17/32	3-35/64	2-1/2	25/64	15/32	15/64	9/32	53/64	2.7559	1-11/64	1-11/32	1.3425	0.563	3/8	UC205-13	FC205	0.92
UCFC205	25	115	90	63.6	10	12	6	7	21	70	29.8	34	34.1	14.3	M10	UC205	FC205	0.89
UCFC 205-14	7/8	4-17/32	3-35/64	2-1/2	25/64	15/32	15/64	9/32	53/64	2.7559	1-11/64	1-11/32	1.3425	0.563	3/8	UC205-14	FC205	0.91
UCFC 205-15	15/16	4-17/32	3-35/64	2-1/2	25/64	15/32	15/64	9/32	53/64	2.7559	1-11/64	1-11/32	1.3425	0.563	3/8	UC205-15	FC205	0.89
UCFC 205-16	1	4-17/32	3-35/64	2-1/2	25/64	15/32	15/64	9/32	53/64	2.7559	1-11/64	1-11/32	1.3425	0.563	3/8	UC205-16	FC205	0.88
UCFC 206-17	1-1/16	4-59/64	3-15/16	2-25/32	25/64	15/32	5/16	5/16	29/32	3.1496	1-17/64	1-7/16	1.5	0.626	3/8	UC206-17	FC206	1.19
UCFC206	30	125	100	70.7	10	12	8	8	23	80	32.2	36.5	38.1	15.9	M10	UC206	FC206	1.18
UCFC 206-18	1-1/8	4-59/64	3-15/16	2-25/32	25/64	15/32	5/16	5/16	29/32	3.1496	1-17/64	1-7/16	1.5	0.626	3/8	UC206-18	FC206	1.2
UCFC 206-19	1-3/16	4-59/64	3-15/16	2-25/32	25/64	15/32	5/16	5/16	29/32	3.1496	1-17/64	1-7/16	1.5	0.626	3/8	UC206-19	FC206	1.18
UCFC 206-20	1-1/4	4-59/64	3-15/16	2-25/32	25/64	15/32	5/16	5/16	29/32	3.1496	1-17/64	1-7/16	1.5	0.626	3/8	UC206-20	FC206	1.17
UCFC 207-20	1-1/4	5-5/16	4-21/64	3-1/16	7/16	35/64	5/16	23/64	1-1/32	3.5433	1-7/16	1-5/8	1.689	0.689	7/16	UC207-20	FC207	1.59
UCFC207	35	135	110	77.8	11	14	8	9	26	90	36.4	41	42.9	17.5	M12	UC207	FC207	1.53
UCFC 207-21	1-5/16	5-5/16	4-21/64	3-1/16	7/16	35/64	5/16	23/64	1-1/32	3.5433	1-7/16	1-5/8	1.689	0.689	7/16	UC207-21	FC207	1.56
UCFC 207-23	1-7/16	5-5/16	4-21/64	3-1/16	7/16	35/64	5/16	23/64	1-1/32	3.5433	1-7/16	1-5/8	1.689	0.689	7/16	UC207-23	FC207	1.5
UCFC 207-22	1-3/8	5-5/16	4-21/64	3-1/16	7/16	35/64	5/16	23/64	1-1/32	3.5433	1-7/16	1-5/8	1.689	0.689	7/16	UC207-22	FC207	1.53
UCFC208	40	145	120	84.8	11	14	10	9	26	100	41.2	45.5	49.2	19	M12	UC208	FC208	1.85
UCFC 208-24	1-1/2	5-45/64	4-23/32	3-11/32	7/16	35/64	25/64	23/64	1-1/32	3.937	1-5/8	1-51/64	1.937	0.748	7/16	UC208-24	FC208	1.89
UCFC 208-25	1-9/16	5-45/64	4-23/32	3-11/32	7/16	35/64	25/64	23/64	1-1/32	3.937	1-5/8	1-51/64	1.937	0.748	7/16	UC208-25	FC208	1.86
UCFC209	45	160	132	93.3	10	16	12	14	26	105	40.2	44.5	49.2	19	M14	UC209	FC209	2.53
UCFC 209-26	1-5/8	6-19/64	5-13/64	3-43/64	25/64	5/8	15/32	35/64	1-1/32	4.1339	1-37/64	1-3/4	1.937	0.748	1/2	UC209-26	FC209	2.63
UCFC 209-27	1-11/16	6-19/64	5-13/64	3-43/64	25/64	5/8	15/32	35/64	1-1/32	4.1339	1-37/64	1-3/4	1.937	0.748	1/2	UC209-27	FC209	2.59
UCFC 209-28	1-3/4	6-19/64	5-13/64	3-43/64	25/64	5/8	15/32	35/64	1-1/32	4.1339	1-37/64	1-3/4	1.937	0.748	1/2	UC209-28	FC209	2.55
UCFC 210-29	1-13/16	6-1/2	5-7/16	3-27/32	25/64	5/8	15/32	35/64	1-7/64	4.3307	1-11/16	1-7/8	2.0315	0.748	1/2	UC210-29	FC210	2.9
UCFC210	50	165	138	97.6	10	16	12	14	28	110	42.6	47.5	51.6	19	M14	UC210	FC210	2.78
UCFC 210-30	1-7/8	6-1/2	5-7/16	3-27/32	25/64	5/8	15/32	35/64	1-7/64	4.3307	1-11/16	1-7/8	2.0315	0.748	1/2	UC210-30	FC210	2.85
UCFC 210-31	1-15/16	6-1/2	5-7/16	3-27/32	25/64	5/8	15/32	35/64	1-7/64	4.3307	1-11/16	1-7/8	2.0315	0.748	1/2	UC210-31	FC210	2.8
UCFC 210-32	2	6-1/2	5-7/16	3-27/32	25/64	5/8	15/32	35/64	1-7/64	4.3307	1-11/16	1-7/8	2.0315	0.748	1/2	UC210-32	FC210	2.76
UCFC211	55	185	150	106.1	13	19	12	15	31	125	46.4	51	55.6	22.2	M16	UC211	FC211	3.86
UCFC 211-33	2-1/16	7-9/32	5-29/32	4-3/16	33/64	3/4	15/32	19/32	1-7/32	4.9213	1-53/64	2-1/64	2.189	0.874	5/8	UC211-33	FC211	3.95
UCFC 211-32	2	7-9/32	5-29/32	4-3/16	33/64	3/4	15/32	19/										

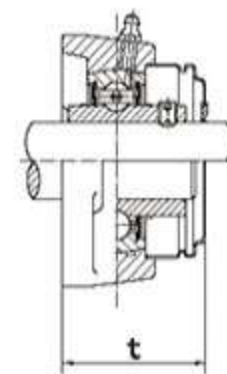
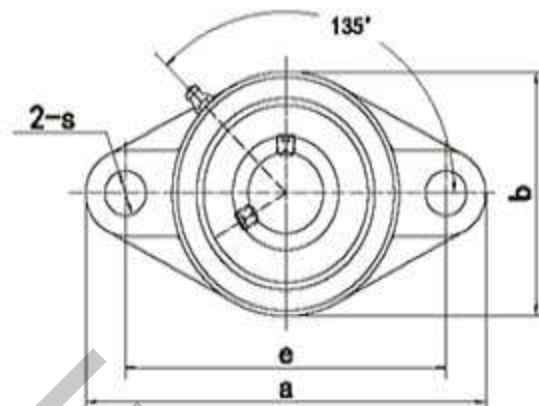
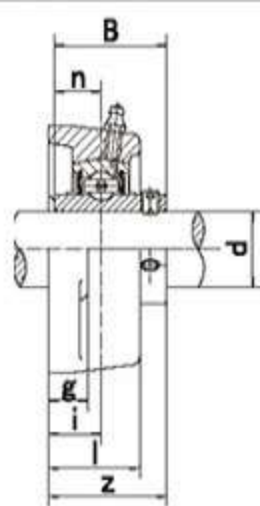


UCFC-C1(D1)

Unit NO.	Dimensions(mm/in.)														Bolt Size mm/in.	Bearing NO.	Housing NO.	Weight(kg)
	d	a	p	(e)	i	s	j	k	g	f	z	t	B	n				
SS-UCFC 218-56	3-1/2	10-7/16	8-21/32	6-1/8	55/64	29/32	23/32	25/32	1-31/32	7.4803	3-3/32	3-9/32	3.7795	1.563	3/4	SS-UC218-56	FC218	12.35
SS-UCFC218	90	265	220	155.5	22	23	18	20	50	190	78.3	83.5	96	39.7	M20	SS-UC218	FC218	12.24
SS-UCFC 217-55	3-7/16	9-27/32	8-3/16	5-51/64	23/32	29/32	23/32	25/32	1-25/32	7.0866	2-3/4	2-15/16	3.374	1.343	3/4	SS-UC217-55	FC217	9.97
SS-UCFC 217-53	3-5/16	9-27/32	8-3/16	5-51/64	23/32	29/32	23/32	25/32	1-25/32	7.0866	2-3/4	2-15/16	3.374	1.343	3/4	SS-UC217-53	FC217	10.26
SS-UCFC 217-52	3-1/4	9-27/32	8-3/16	5-51/64	23/32	29/32	23/32	25/32	1-25/32	7.0866	2-3/4	2-15/16	3.374	1.343	3/4	SS-UC217-52	FC217	10.3
SS-UCFC217	85	250	208	147.1	18	23	18	20	45	180	69.6	74.6	85.7	34.1	M20	SS-UC217	FC217	10.18
SS-UCFC 216-51	3-3/16	9-29/64	7-7/8	5-9/16	23/32	29/32	5/8	23/32	1-21/32	6.6929	2-21/32	2-55/64	3.252	1.311	3/4	SS-UC216-51	FC216	8.39
SS-UCFC 216-50	3-1/8	9-29/64	7-7/8	5-9/16	23/32	29/32	5/8	23/32	1-21/32	6.6929	2-21/32	2-55/64	3.252	1.311	3/4	SS-UC216-50	FC216	8.52
SS-UCFC 216-49	3-1/16	9-29/64	7-7/8	5-9/16	23/32	29/32	5/8	23/32	1-21/32	6.6929	2-21/32	2-55/64	3.252	1.311	3/4	SS-UC216-49	FC216	8.65
SS-UCFC216	80	240	200	141.4	18	23	16	18	42	170	67.3	72.5	82.6	33.3	M20	SS-UC216	FC216	8.47
SS-UCFC 215-48	3	8-21/32	7-1/4	5-1/8	23/32	3/4	5/8	23/32	1-37/64	6.2992	2-15/32	2-21/32	3.063	1.311	5/8	SS-UC215-48	FC215	6.8
SS-UCFC 215-47	2-15/16	8-21/32	7-1/4	5-1/8	23/32	3/4	5/8	23/32	1-37/64	6.2992	2-15/32	2-21/32	3.063	1.311	5/8	SS-UC215-47	FC215	7
SS-UCFC 215-46	2-7/8	8-21/32	7-1/4	5-1/8	23/32	3/4	5/8	23/32	1-37/64	6.2992	2-15/32	2-21/32	3.063	1.311	5/8	SS-UC215-46	FC215	7.11
SS-UCFC 215-45	2-13/16	8-21/32	7-1/4	5-1/8	23/32	3/4	5/8	23/32	1-37/64	6.2992	2-15/32	2-21/32	3.063	1.311	5/8	SS-UC215-45	FC215	6.86
SS-UCFC215	75	220	184	130.1	18	19	16	18	40	160	62.5	67.5	77.8	33.3	M16	SS-UC215	FC215	6.86
SS-UCFC 214-44	2-3/4	8-15/32	6-31/32	4-59/64	43/64	3/4	35/64	23/32	1-37/64	5.9055	2-13/32	2-21/32	2.937	1.189	5/8	SS-UC214-44	FC214	6.47
SS-UCFC 214-43	2-11/16	8-15/32	6-31/32	4-59/64	43/64	3/4	35/64	23/32	1-37/64	5.9055	2-13/32	2-21/32	2.937	1.189	5/8	SS-UC214-43	FC214	6.57
SS-UCFC 214-42	2-5/8	8-15/32	6-31/32	4-59/64	43/64	3/4	35/64	23/32	1-37/64	5.9055	2-13/32	2-21/32	2.937	1.189	5/8	SS-UC214-42	FC214	6.67
SS-UCFC214	70	215	177	125.1	17	19	14	18	40	150	61.4	67.5	74.6	30.2	M16	SS-UC214	FC214	6.46
SS-UCFC 213-41	2-9/16	8-5/64	6-11/16	4-47/64	5/8	3/4	35/64	19/32	1-27/64	5.5118	2-3/16	2-25/64	2.563	1	5/8	SS-UC213-41	FC213	5.3

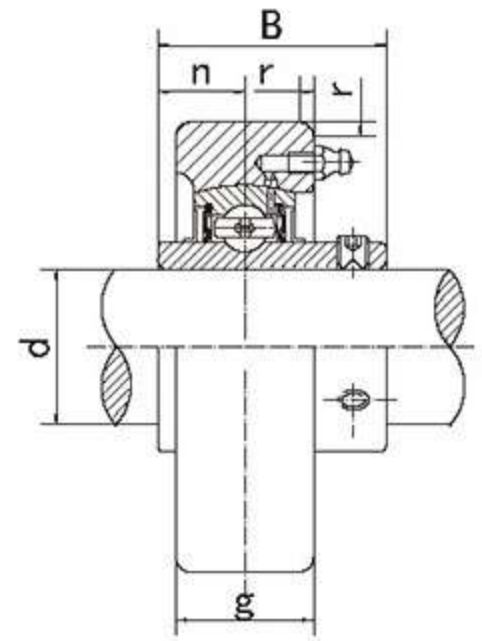
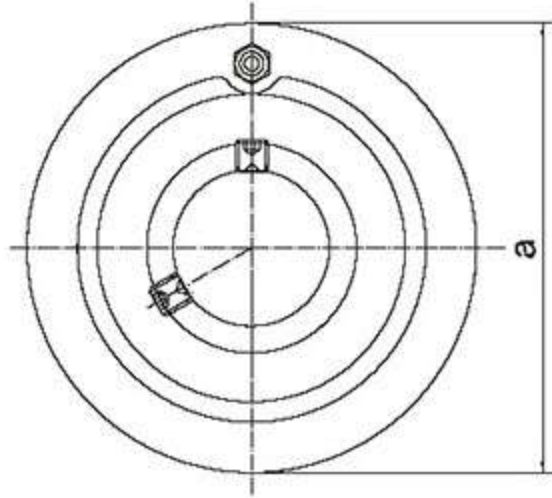


Unit NO.	Dimensions(mm/in.)												Bolt Size mm/in	Bearing NO.	Housing NO.	Weight(kg)
	d	a	e	i	g	l	s	b	z	t	B	n				
UCFL201	12	113	90	15	11	25.5	12	60	33.3	37.5	31	12.7	M10	UC201	FL201	0.45
UCFL 201-8	1/2	4-7/16	3-35/64	19/32	7/16	1	15/32	2-3/8	1-5/16	1-31/64	1.2205	0.5	3/8	UC201-8	FL201	0.44
UCFL202	15	113	90	15	11	25.5	12	60	33.3	37.5	31	12.7	M10	UC202	FL202	0.44
UCFL 202-9	9/16	4-7/16	3-35/64	19/32	7/16	1	15/32	2-3/8	1-5/16	1-31/64	1.2205	0.5	3/8	UC202-9	FL202	0.44
UCFL 202-10	5/8	4-7/16	3-35/64	19/32	7/16	1	15/32	2-3/8	1-5/16	1-31/64	1.2205	0.5	3/8	UC202-10	FL202	0.44
UCFL203	17	113	90	15	11	25.5	12	60	33.3	37.5	31	12.7	M10	UC203	FL203	0.43
UCFL 203-11	11/16	4-7/16	3-35/64	19/32	7/16	1	15/32	2-3/8	1-5/16	1-31/64	1.2205	0.5	3/8	UC203-11	FL203	0.42
UCFL204	20	113	90	15	11	25.5	12	60	33.3	37.5	31	12.7	M10	UC204	FL204	0.4
UCFL 204-12	3/4	4-7/16	3-35/64	19/32	7/16	1	15/32	2-3/8	1-5/16	1-31/64	1.2205	0.5	3/8	UC204-12	FL204	0.4
UCFL205	25	130	99	16	13	27	16	68	35.8	40	34.1	14.3	M14	UC205	FL205	0.58
UCFL 205-13	13/16	5-1/8	3-57/64	5/8	1/2	1-1/16	5/8	2-11/16	1-13/32	1-9/16	1.3425	0.563	1/2	UC205-13	FL205	0.62
UCFL 205-14	7/8	5-1/8	3-57/64	5/8	1/2	1-1/16	5/8	2-11/16	1-13/32	1-9/16	1.3425	0.563	1/2	UC205-14	FL205	0.61
UCFL 205-15	15/16	5-1/8	3-57/64	5/8	1/2	1-1/16	5/8	2-11/16	1-13/32	1-9/16	1.3425	0.563	1/2	UC205-15	FL205	0.59
UCFL 205-16	1	5-1/8	3-57/64	5/8	1/2	1-1/16	5/8	2-11/16	1-13/32	1-9/16	1.3425	0.563	1/2	UC205-16	FL205	0.58
UCFL206	30	148	117	18	13	31	16	80	40.2	44.5	38.1	15.9	M14	UC206	FL206	0.83
UCFL 206-17	1-1/16	5-13/16	4-39/64	45/64	1/2	1-7/32	5/8	3-5/32	1-19/32	1-3/4	1.5	0.626	1/2	UC206-17	FL206	0.84
UCFL 206-18	1-1/8	5-13/16	4-39/64	45/64	1/2	1-7/32	5/8	3-5/32	1-19/32	1-3/4	1.5	0.626	1/2	UC206-18	FL206	0.85
UCFL 206-19	1-3/16	5-13/16	4-39/64	45/64	1/2	1-7/32	5/8	3-5/32	1-19/32	1-3/4	1.5	0.626	1/2	UC206-19	FL206	0.83
UCFL 206-20	1-1/4	5-13/16	4-39/64	45/64	1/2	1-7/32	5/8	3-5/32	1-19/32	1-3/4	1.5	0.626	1/2	UC206-20	FL206	0.82
UCFL207	35	161	130	19	14	34	16	90	44.4	48.5	42.9	17.5	M14	UC207	FL207	1.1
UCFL 207-20	1-1/4	6-11/32	5-1/8	3/4	35/64	1-11/32	5/8	3-35/64	1-3/4	1-29/32	1.689	0.689	1/2	UC207-20	FL207	1.16
UCFL 207-21	1-5/16	6-11/32	5-1/8	3/4	35/64	1-11/32	5/8	3-35/64	1-3/4	1-29/32	1.689	0.689	1/2	UC207-21	FL207	1.13
UCFL 207-22	1-3/8	6-11/32	5-1/8	3/4	35/64	1-11/32	5/8	3-35/64	1-3/4	1-29/32	1.689	0.689	1/2	UC207-22	FL207	1.1
UCFL 207-23	1-7/16	6-11/32	5-1/8	3/4	35/64	1-11/32	5/8	3-35/64	1-3/4	1-29/32	1.689	0.689	1/2	UC207-23	FL207	1.07
UCFL208	40	175	144	21	14	36	16	100	51.2	55.5	49.2	19	M14	UC208	FL208	1.42
UCFL 208-24	1-1/2	6-7/8	5-43/64	53/64	35/64	1-13/32	5/8	3-15/16	2-1/64	2-3/16	1.937	0.748	1/2	UC208-24	FL208	1.46
UCFL 208-25	1-9/16	6-7/8	5-43/64	53/64	35/64	1-13/32	5/8	3-15/16	2-1/64	2-3/16	1.937	0.748	1/2	UC208-25	FL208	1.43
UCFL209	45	188	148	22	15	38	19	108	52.2	56.5	49.2	19	M16	UC209	FL209	1.75
UCFL 209-26	1-5/8	7-13/32	5-53/64	55/64	19/32	1-1/2	3/4	4-1/4	2-1/16	2-7/32	1.937	0.748	5/8	UC209-26	FL209	1.85
UCFL 215-45	2-13/16	10-13/16	8-55/64	1-11/32	7/8	2-7/32	29/32	6-1/2	3-3/32	3-9/32	3.063	1.311	3/4	UC215-45	FL215	5.61
UCFL215	75	275	225	34	22	56	23	165	78.5	83.5	77.8	33.3	M20	UC215	FL215	5.64
UCFL 214-44	2-3/4	10-7/16	8-1/2	1-7/32	7/8	2-1/8	29/32	6-5/16	2-31/32	3-13/64	2.937	1.189	3/4	UC214-44	FL214	5.13
UCFL 214-43	2-11/16	10-7/16	8-1/2	1-7/32	7/8	2-1/8	29/32	6-5/16	2-31/32	3-13/64	2.937	1.189	3/4	UC214-43	FL214	5.23
UCFL 214-42	2-5/8	10-7/16	8-1/2	1-7/32	7/8	2-1/8	29/32	6-5/16	2-31/32	3-13/64	2.937	1.189	3/4	UC214-42	FL214	5.33
UCFL214	70	265	216	31	22	54	23	160	75.4	81.5	74.6	30.2	M20	UC214	FL214	5.12
UCFL 213-41	2-9/16	10-5/32	8-17/64	1-3/16	7/8	1-31/32	29/32	6-3/32	2-3/4	2-15/16	2.563	1	3/4	UC213-41	FL213	4.56
UCFL 213-40	2-1/2	10-5/32	8-17/64	1-3/16	7/8	1-31/32	29/32	6-3/32	2-3/4	2-15/16	2.563	1	3/4	UC213-40	FL213	4.65
UCFL213	65	258	210	30	22	50	23	155	69.7	74.5	65.1	25.4	M20	UC213	FL213	4.56
UCFL 212-39	2-7/16	9-27/32	7-61/64	1-9/64	23/32	1-7/8	29/32	5-1/2	2-23/32	2-57/64	2.563	1	3/4	UC212-39	FL212	3.56
UCFL 212-38	2-3/8	9-27/32	7-61/64	1-9/64	23/32	1-7/8	29/32	5-1/2	2-23/32	2-57/64	2.563	1	3/4	UC212-38	FL212	3.63
UCFL 212-37	2-5/16	9-27/32	7-61/64	1-9/64	23/32	1-7/8	29/32	5-1/2	2-23/32	2-57/64	2.563	1	3/4	UC212-37	FL212	3.7
UCFL 212-36	2-1/4	9-27/32	7-61/64	1-9/64	23/32	1-7/8	29/32	5-1/2	2-23/32	2-57/64	2.563	1	3/4	UC212-36	FL212	3.78
UCFL212	60	250	202	29	18	48	23	140	68.7	73.5	65.1	25.4	M20	UC212	FL212	3.65
UCFL 211-35	2-3/16	8-13/16	7-1/4	63/64	23/32	1-11/16	3/4	5-1/8	2-5/16	2-15/32	2.189	0.874	5/8	UC211-35	FL211	2.77
UCFL 211-34	2-1/8	8-13/16	7-1/4	63/64	23/32	1-11/16	3/4	5-1/8	2-5/16	2-15/32	2.189	0.874	5/8	UC211-34	FL211	2.84
UCFL 211-33	2-1/16	8-13/16	7-1/4	63/64	23/32	1-11/16	3/4	5-1/8	2-5/16	2-15/32	2.189	0.874	5/8	UC211-33	FL211	2.88
UCFL 211-32	2	8-13/16	7-1/4	63/64	23/32	1-11/16	3/4	5-1/8	2-5/16	2-15/32	2.189	0.874	5/8	UC211-32	FL211	2.94
UCFL211	55	224	184	25	18	43	19	130	58.4	63	55.6	22.2	M16	UC211	FL211	2.79
UCFL 210-32	2	7-3/4	6-3/16	55/64	19/32	1-37/64	3/4	4-17/32	2-5/32	2-11/32	2.0315	0.748	5/8	UC210-32	FL210	2
UCFL 210-31	1-15/16	7-3/4	6-3/16	55/64	19/32	1-37/64	3/4	4-17/32	2-5/32	2-11/32	2.0315	0.748	5/8	UC210-31	FL210	2.04
UCFL 210-30	1-7/8	7-3/4	6-3/16	55/64	19/32	1-37/64	3/4	4-17/32	2-5/32	2-11/32	2.0315	0.748	5/8	UC210-30	FL210	2.09
UCFL 210-29	1-13/16	7-3/4	6-3/16	55/64	19/32	1-37/64	3/4	4-17/32	2-5/32	2-11/32	2.0315	0.748	5/8	UC210-29	FL210	2.14
UCFL210	50	197	157	22	15	40	19	115	54.6	59.5	51.6	19	M16	UC210	FL210	2.02
UCFL 209-28	1-3/4	7-13/32	5-53/64	55/64	19/32	1-1/2	3/4	4-1/4	2-1/16	2-7/32	1.937	0.748	5/8	UC209-28	FL209	1.77
UCFL 209-27	1-11/16	7-13/32	5-53/64	55/64	19/32	1-1/2	3/4	4-1/4	2-1/16	2-7/32	1.937	0.748	5/8	UC209-27	FL209	1.81
UCFL 216-51	3-3/16	11-13/32	9-11/64	1-11/32	7/8	2-9/32	63/64	7-3/32	3-9/32	3-31/64	3.252	1.311	7/8	UC216-51	FL216	6.83
UCFL 216-50	3-1/8	11-13/32	9-11/64	1-11/32	7/8	2-9/32	63/64	7-3/32	3-9/32	3-31/64	3.252	1.311	7/8	UC216-50	FL216	6.96
UCFL 216-49	3-1/16	11-13/32	9-11/64	1-11/32	7/8	2-9/32	63/64	7-3/32	3-9/32	3-31/64	3.252	1.311	7/8	UC216-49	FL216	7.09
UCFL216	80	290	233	34	22	58	25	180	83.3	88.5	82.6	33.3	M22	UC216	FL216	6.91
UCFL 215-48	3	10-13/16	8-55/64	1-11/32	7/8	2-7/32	29/32	6-1/2	3-3/32	3-9/32	3.063	1.311	3/4	UC215-48	FL215	5.55
UCFL 215-47	2-15/16	10-13/16	8-55/64	1-11/32	7/8	2-7/32	29/32	6-1/2	3-3/32	3-9/32	3.063	1.311	3/4	UC215-47	FL215	5.75
UCFL 215-46	2-7/8	10-13/16	8-55/64	1-11/32	7/8	2-7/32	29/32	6-1/2	3-3/32	3-9/32	3.063	1.311	3/4	UC215-46	FL215	5.86
UCFL217	85	305	248	36	24	63	25	190	87.5	92.6	85.7	34.1	M22	UC217	FL217	8.27
UCFL 217-52	3-1/4	12	9-49/64	1-27/64	15/16	2-15/32	63/64	7-15/32	3-7/16	3-41/64	3.374	1.343	7/8	UC217-52	FL217	8.39
UCFL 217-53	3-5/16	12	9-49/64	1-27/64	15/16	2-15/32	63/64	7-15/32	3-7/16	3-41/64	3.374	1.343	7/8	UC217-53	FL217	8.35
UCFL 217-55	3-7/16	12	9-49/64	1-27/64	15/16	2-15/32	63/64	7-15/32	3-7/16	3-41/64	3.374	1.343	7/8	UC217-55	FL217	8.06
UCFL218	90	320	265	40	24	68	25	205	96.3	101.5	96	39.7	M22	UC218	FL218	10.13
UCFL 218-56	3-1/2	12-19/32	10-7/16	1-37/64	15/16	2-11/16	63/64	8-1/16	3-25/32	4	3.7795	1.563	7/8	UC218-56	FL218	10.24

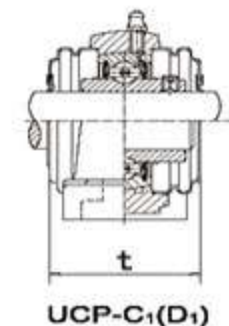
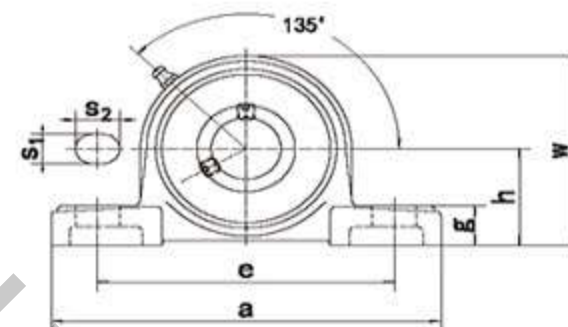
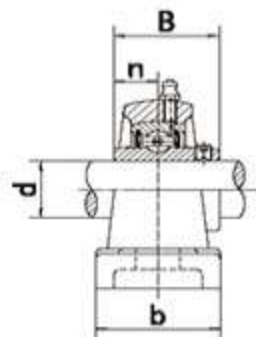


UCFL-C1(D1)

Unit NO.	Dimensions(mm/in.)												Bolt Size mm/in.	Bearing NO.	Housing NO.	Weight(kg)
	d	a	e	i	g	f	s	b	z	t	B	n				
SS-UCFL 218-56	3-1/2	12-19/32	10-7/16	1-37/64	15/16	2-11/16	63/64	8-1/16	3-25/32	4	3.7795	1.563	7/8	SS-UC218-56	FL218	10.24
SS-UCFL218	90	320	265	40	24	68	25	205	96.3	101.5	96	39.7	M22	SS-UC218	FL218	10.13
SS-UCFL 217-55	3-7/16	12	9-49/64	1-27/64	15/16	2-15/32	63/64	7-15/32	3-7/16	3-41/64	3.374	1.343	7/8	SS-UC217-55	FL217	8.06
SS-UCFL 217-53	3-5/16	12	9-49/64	1-27/64	15/16	2-15/32	63/64	7-15/32	3-7/16	3-41/64	3.374	1.343	7/8	SS-UC217-53	FL217	8.35
SS-UCFL 217-52	3-1/4	12	9-49/64	1-27/64	15/16	2-15/32	63/64	7-15/32	3-7/16	3-41/64	3.374	1.343	7/8	SS-UC217-52	FL217	8.39
SS-UCFL217	85	305	248	36	24	63	25	190	87.5	92.6	85.7	34.1	M22	SS-UC217	FL217	8.27
SS-UCFL 216-51	3-3/16	11-13/32	9-11/64	1-11/32	7/8	2-9/32	63/64	7-3/32	3-9/32	3-31/64	3.252	1.311	7/8	SS-UC216-51	FL216	6.83
SS-UCFL 216-50	3-1/8	11-13/32	9-11/64	1-11/32	7/8	2-9/32	63/64	7-3/32	3-9/32	3-31/64	3.252	1.311	7/8	SS-UC216-50	FL216	6.96
SS-UCFL 216-49	3-1/16	11-13/32	9-11/64	1-11/32	7/8	2-9/32	63/64	7-3/32	3-9/32	3-31/64	3.252	1.311	7/8	SS-UC216-49	FL216	7.09
SS-UCFL216	80	290	233	34	22	58	25	180	83.3	88.5	82.6	33.3	M22	SS-UC216	FL216	6.91
SS-UCFL 215-48	3	10-13/16	8-55/64	1-11/32	7/8	2-7/32	29/32	6-1/2	3-3/32	3-9/32	3.063	1.311	3/4	SS-UC215-48	FL215	5.55
SS-UCFL 215-47	2-15/16	10-13/16	8-55/64	1-11/32	7/8	2-7/32	29/32	6-1/2	3-3/32	3-9/32	3.063	1.311	3/4	SS-UC215-47	FL215	5.75
SS-UCFL 215-46	2-7/8	10-13/16	8-55/64	1-11/32	7/8	2-7/32	29/32	6-1/2	3-3/32	3-9/32	3.063	1.311	3/4	SS-UC215-46	FL215	5.86
SS-UCFL 215-45	2-13/16	10-13/16	8-55/64	1-11/32	7/8	2-7/32	29/32	6-1/2	3-3/32	3-9/32	3.063	1.311	3/4	SS-UC215-45	FL215	5.61
SS-UCFL215	75	275	225	34	22	56	23	165	78.5	83.5	77.8	33.3	M20	SS-UC215	FL215	5.64
SS-UCFL 214-44	2-3/4	10-7/16	8-1/2	1-7/32	7/8	2-1/8	29/32	6-5/16	2-31/32	3-13/64	2.937	1.189	3/4	SS-UC214-44	FL214	5.13
SS-UCFL 214-43	2-11/16	10-7/16	8-1/2	1-7/32	7/8	2-1/8	29/32	6-5/16	2-31/32	3-13/64	2.937	1.189	3/4	SS-UC214-43	FL214	5.23
SS-UCFL 214-42	2-5/8	10-7/16	8-1/2	1-7/32	7/8	2-1/8	29/32	6-5/16	2-31/32	3-13/64	2.937	1.189	3/4	SS-UC214-42	FL214	5.33
SS-UCFL214	70	265	216	31	22	54	23	160	75.4	81.5	74.6	30.2	M20	SS-UC214	FL214	5.12
SS-UCFL 213-41	2-9/16	10-5/32	8-17/64	1-3/16	7/8	1-31/32	29/32	6-3/32	2-3/4	2-15/16	2.563	1	3/4	SS-UC213-41	FL213	4.56

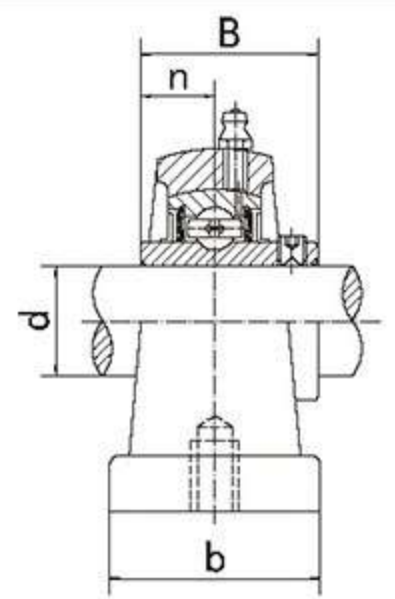
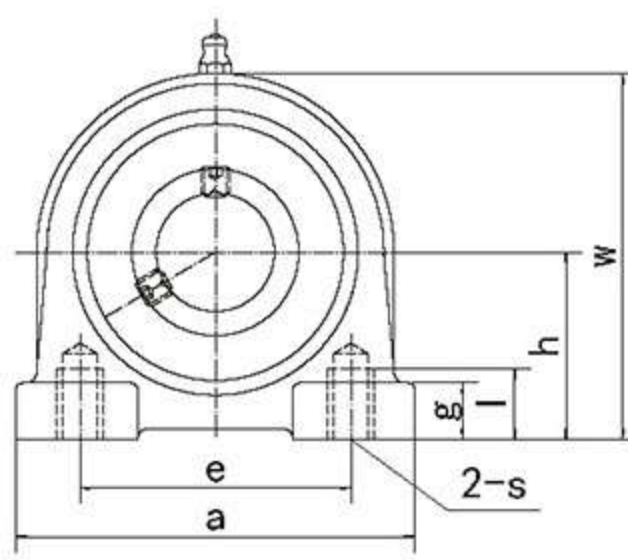


Unit NO.	Dimensions(mm/in.)						Bearing NO.	Housing NO.	Weight(kg)
	d	a	g	r	B	n			
UCC201	12	72	20	2	31	12.7	UC201	C201	0.52
UCC 201-8	1/2	2.8346	25/32	0.079	1.2205	0.5	UC201-8	C201	0.51
UCC202	15	72	20	2	31	12.7	UC202	C202	0.51
UCC 202-9	9/16	2.8346	25/32	0.079	1.2205	0.5	UC202-9	C202	0.51
UCC 202-10	5/8	2.8346	25/32	0.079	1.2205	0.5	UC202-10	C202	0.51
UCC203	17	72	20	2	31	12.7	UC203	C203	0.5
UCC 203-11	11/16	2.8346	25/32	0.079	1.2205	0.5	UC203-11	C203	0.49
UCC204	20	72	20	2	31	12.7	UC204	C204	0.48
UCC 204-12	3/4	2.8346	25/32	0.079	1.2205	0.5	UC204-12	C204	0.48
UCC205	25	80	22	2	34.1	14.3	UC205	C205	0.63
UCC 205-13	13/16	3.1496	55/64	0.079	1.3425	0.563	UC205-13	C205	0.67
UCC 205-14	7/8	3.1496	55/64	0.079	1.3425	0.563	UC205-14	C205	0.66
UCC 205-15	15/16	3.1496	55/64	0.079	1.3425	0.563	UC205-15	C205	0.64
UCC 205-16	1	3.1496	55/64	0.079	1.3425	0.563	UC205-16	C205	0.63
UCC206	30	85	27	2	38.1	15.9	UC206	C206	0.79
UCC 206-17	1-1/16	3.3465	1-1/16	0.079	1.5	0.626	UC206-17	C206	0.8
UCC 206-18	1-1/8	3.3465	1-1/16	0.079	1.5	0.626	UC206-18	C206	0.81
UCC 206-19	1-3/16	3.3465	1-1/16	0.079	1.5	0.626	UC206-19	C206	0.79
UCC 206-20	1-1/4	3.3465	1-1/16	0.079	1.5	0.626	UC206-20	C206	0.78
UCC207	35	90	28	2	42.9	17.5	UC207	C207	0.88
UCC 207-20	1-1/4	3.5433	1-7/64	0.079	1.689	0.689	UC207-20	C207	0.94
UCC 207-21	1-5/16	3.5433	1-7/64	0.079	1.689	0.689	UC207-21	C207	0.91
UCC 207-22	1-3/8	3.5433	1-7/64	0.079	1.689	0.689	UC207-22	C207	0.88
UCC 207-23	1-7/16	3.5433	1-7/64	0.079	1.689	0.689	UC207-23	C207	0.85
UCC208	40	100	30	2.5	49.2	19	UC208	C208	1.17
UCC 208-24	1-1/2	3.937	1-3/16	0.098	1.937	0.748	UC208-24	C208	1.21
UCC 208-25	1-9/16	3.937	1-3/16	0.098	1.937	0.748	UC208-25	C208	1.18
UCC209	45	110	31	2.5	49.2	19	UC209	C209	1.46
UCC 209-26	1-5/8	4.3307	1-7/32	0.098	1.937	0.748	UC209-26	C209	1.56
UCC 209-27	1-11/16	4.3307	1-7/32	0.098	1.937	0.748	UC209-27	C209	1.52
UCC 209-28	1-3/4	4.3307	1-7/32	0.098	1.937	0.748	UC209-28	C209	1.48
UCC210	50	120	33	2.5	51.6	19	UC210	C210	1.85
UCC 210-29	1-13/16	4.7244	1-19/64	0.098	2.0315	0.748	UC210-29	C210	1.97
UCC 210-30	1-7/8	4.7244	1-19/64	0.098	2.0315	0.748	UC210-30	C210	1.92
UCC 210-31	1-15/16	4.7244	1-19/64	0.098	2.0315	0.748	UC210-31	C210	1.87
UCC 210-32	2	4.7244	1-19/64	0.098	2.0315	0.748	UC210-32	C210	1.83
UCC211	55	125	35	2.5	55.6	22.2	UC211	C211	2.05
UCC 211-32	2	4.9213	1-3/8	0.098	2.189	0.874	UC211-32	C211	2.2
UCC 211-33	2-1/16	4.9213	1-3/8	0.098	2.189	0.874	UC211-33	C211	2.14
UCC 211-34	2-1/8	4.9213	1-3/8	0.098	2.189	0.874	UC211-34	C211	2.1
UCC 211-35	2-3/16	4.9213	1-3/8	0.098	2.189	0.874	UC211-35	C211	2.03
UCC212	60	130	38	2.5	65.1	25.4	UC212	C212	2.36
UCC 212-36	2-1/4	5.1181	1-1/2	0.098	2.563	1	UC212-36	C212	2.49
UCC 212-37	2-5/16	5.1181	1-1/2	0.098	2.563	1	UC212-37	C212	2.41
UCC 212-38	2-3/8	5.1181	1-1/2	0.098	2.563	1	UC212-38	C212	2.34
UCC 212-39	2-7/16	5.1181	1-1/2	0.098	2.563	1	UC212-39	C212	2.27
UCC213	65	140	40	3	65.1	25.4	UC213	C213	2.79
UCC 213-40	2-1/2	5.5118	1-37/64	0.118	2.563	1	UC213-40	C213	2.88
UCC 213-41	2-9/16	5.5118	1-37/64	0.118	2.563	1	UC213-41	C213	2.79

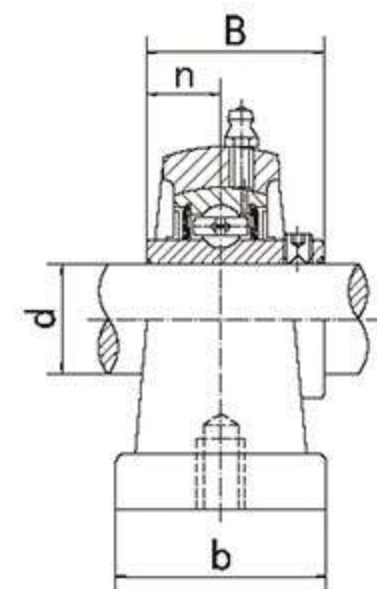
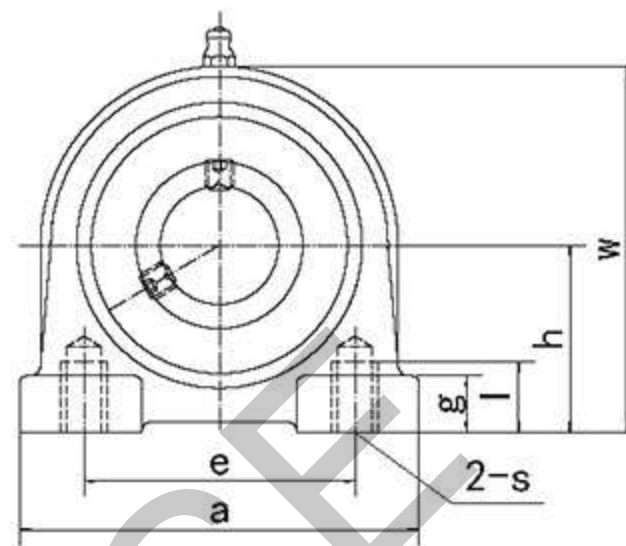


UCP-C₁(D₁)

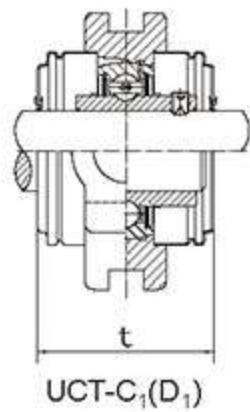
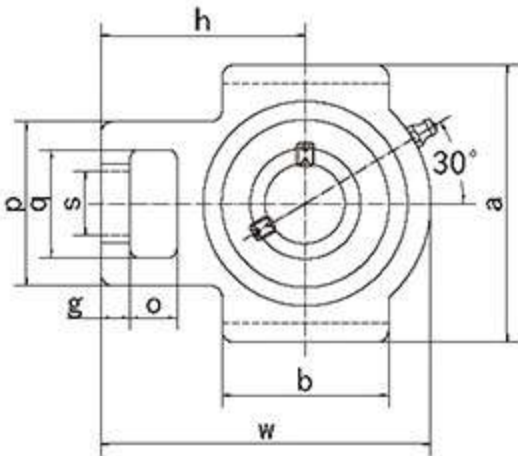
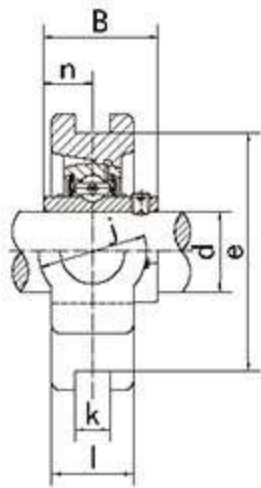
Unit NO.	Dimensions(mm/in.)												Bearing NO.	Bolt Size mm/in.	Housing NO.	Weight(kg)
	d	h	a	e	b	s2	s1	g	w	t	B	n				
SS-UCP 220-64	4	4-17/32	14-61/64	12-1/8	3-47/64	1-27/64	1-3/16	1-37/64	8-55/64		4.252	1.6535	SS-UC220-64	15/16	P220	16
SS-UCP220	100	115	380	308	95	36	30	40	225		108	42	SS-UC220	M24	P220	16
SS-UCP 218-56	3-1/2	4	12-7/8	10-5/16	3-15/32	1-3/16	1-1/16	1-19/64	7-51/64	4-27/32	3.7795	1.563	SS-UC218-56	7/8	P218	11.7
SS-UCP218	90	101.6	327	262	88	30	27	33	198	123	96	39.7	SS-UC218	M22	P218	11.59
SS-UCP 217-55	3-7/16	3-3/4	12-13/64	9-23/32	3-17/64	1-3/32	63/64	1-1/4	7-9/32	4-29/64	3.374	1.343	SS-UC217-55	3/4	P217	9.35
SS-UCP 217-53	3-5/16	3-3/4	12-13/64	9-23/32	3-17/64	1-3/32	63/64	1-1/4	7-9/32	4-29/64	3.374	1.343	SS-UC217-53	3/4	P217	9.64
SS-UCP 217-52	3-1/4	3-3/4	12-13/64	9-23/32	3-17/64	1-3/32	63/64	1-1/4	7-9/32	4-29/64	3.374	1.343	SS-UC217-52	3/4	P217	9.68
SS-UCP217	85	95.2	310	247	83	28	25	32	185	113.2	85.7	34.1	SS-UC217	M20	P217	9.56
SS-UCP 216-51	3-3/16	3-1/2	11-1/2	9-1/8	3-1/16	1-3/32	63/64	1-3/16	6-27/32	4-19/64	3.252	1.311	SS-UC216-51	3/4	P216	7.78
SS-UCP 216-50	3-1/8	3-1/2	11-1/2	9-1/8	3-1/16	1-3/32	63/64	1-3/16	6-27/32	4-19/64	3.252	1.311	SS-UC216-50	3/4	P216	7.91
SS-UCP 216-49	3-1/16	3-1/2	11-1/2	9-1/8	3-1/16	1-3/32	63/64	1-3/16	6-27/32	4-19/64	3.252	1.311	SS-UC216-49	3/4	P216	8.04
SS-UCP216	80	88.9	292	232	78	28	25	30	174	109	82.6	33.3	SS-UC216	M20	P216	7.86
SS-UCP 215-48	3	3-1/4	10-53/64	8-35/64	2-29/32	1-3/32	63/64	1-3/32	6-3/8	3-57/64	3.063	1.311	SS-UC215-48	3/4	P215	6.39
SS-UCP 215-47	2-15/16	3-1/4	10-53/64	8-35/64	2-29/32	1-3/32	63/64	1-3/32	6-3/8	3-57/64	3.063	1.311	SS-UC215-47	3/4	P215	6.59
SS-UCP 215-46	2-7/8	3-1/4	10-53/64	8-35/64	2-29/32	1-3/32	63/64	1-3/32	6-3/8	3-57/64	3.063	1.311	SS-UC215-46	3/4	P215	6.7
SS-UCP 215-45	2-13/16	3-1/4	10-53/64	8-35/64	2-29/32	1-3/32	63/64	1-3/32	6-3/8	3-57/64	3.063	1.311	SS-UC215-45	3/4	P215	6.45
SS-UCP215	75	82.6	275	217	74	28	25	28	162	99	77.8	33.3	SS-UC215	M20	P215	6.45
SS-UCP 214-44	2-3/4	3-1/8	10-15/32	8-17/64	2-27/32	1-3/32	63/64	1-1/16	6-9/64	3-55/64	2.937	1.189	SS-UC214-44	3/4	P214	5.87
SS-UCP 214-43	2-11/16	3-1/8	10-15/32	8-17/64	2-27/32	1-3/32	63/64	1-1/16	6-9/64	3-55/64	2.937	1.189	SS-UC214-43	3/4	P214	5.97
SS-UCP 214-42	2-5/8	3-1/8	10-15/32	8-17/64	2-27/32	1-3/32	63/64	1-1/16	6-9/64	3-55/64	2.937	1.189	SS-UC214-42	3/4	P214	6.07



Unit NO.	Dimensions(mm/in.)											Bolt Size mm/in.	Bearing NO.	Housing NO.	Weight(kg)
	d	h	a	e	b	s	g	l	w	B	n				
UCPA201	12	30.2	76	52	40	M10	11	15	62	31	12.7	M10	UC201	PA201	0.63
UCPA 201-8	1/2	1-3/16	3	2-3/64	1-9/16	M10	7/16	19/32	2-7/16	1.2205	0.5	M10	UC201-8	PA201	0.62
UCPA202	15	1-3/16	3	2-3/64	1-9/16	M10	7/16	19/32	2-7/16	1.2205	0.5	M10	UC202	PA202	0.62
UCPA 202-9	9/16	1-3/16	3	2-3/64	1-9/16	M10	7/16	19/32	2-7/16	1.2205	0.5	M10	UC202-9	PA202	0.62
UCPA 202-10	5/8	1-3/16	3	2-3/64	1-9/16	M10	7/16	19/32	2-7/16	1.2205	0.5	M10	UC202-10	PA202	0.62
UCPA203	17	1-3/16	3	2-3/64	1-9/16	M10	7/16	19/32	2-7/16	1.2205	0.5	M10	UC203	PA203	0.61
UCPA 203-11	11/16	1-3/16	3	2-3/64	1-9/16	M10	7/16	19/32	2-7/16	1.2205	0.5	M10	UC203-11	PA203	0.6
UCPA204	20	30.2	76	32	40	M10	11	15	2-7/16	1.2205	0.5	M10	UC204	PA204	0.589
UCPA 204-12	3/4	1-3/16	3	2-3/64	1-9/16	M10	7/16	19/32	2-7/16	1.2205	0.5	M10	UC204-12	PA204	0.589
UCPA205	25	36.5	84	56	38	M10	12	15	72	34.1	14.3	M10	UC205	PA205	0.756
UCPA 205-13	13/16	1-7/16	3-5/16	2-13/64	1-1/2	M10	15/32	19/32	2-53/64	1.3425	0.563	M10	UC205-13	PA205	0.793
UCPA 205-14	7/8	1-7/16	3-5/16	2-13/64	1-1/2	M10	15/32	19/32	2-53/64	1.3425	0.563	M10	UC205-14	PA205	0.783
UCPA 205-15	15/16	1-7/16	3-5/16	2-13/64	1-1/2	M10	15/32	19/32	2-53/64	1.3425	0.563	M10	UC205-15	PA205	0.763
UCPA 205-16	1	1-7/16	3-5/16	2-13/64	1-1/2	M10	15/32	19/32	2-53/64	1.3425	0.563	M10	UC205-16	PA205	0.753
UCPA206	30	42.9	94	66	50	M14	12	18	84	38.1	15.9	M14	UC206	PA206	1.116
UCPA 206-17	1-1/16	1-11/16	3-45/64	2-19/32	1-31/32	M14	15/32	45/64	3-5/16	1.5	0.626	M14	UC206-17	PA206	1.126
UCPA 206-18	1-1/8	1-11/16	3-45/64	2-19/32	1-31/32	M14	15/32	45/64	3-5/16	1.5	0.626	M14	UC206-18	PA206	1.136
UCPA 206-19	1-3/16	1-11/16	3-45/64	2-19/32	1-31/32	M14	15/32	45/64	3-5/16	1.5	0.626	M14	UC206-19	PA206	1.116
UCPA 206-20	1-1/4	1-11/16	3-45/64	2-19/32	1-31/32	M14	15/32	45/64	3-5/16	1.5	0.626	M14	UC206-20	PA206	1.106
UCPA207	35	47.6	110	80	55	M14	13	20	95	42.9	17.5	M14	UC207	PA207	1.546
UCPA 207-20	1-1/4	1-7/8	4-21/64	3-5/32	2-11/64	M14	33/64	25/32	3-47/64	1.689	0.689	M14	UC207-20	PA207	1.611
UCPA 207-21	1-5/16	1-7/8	4-21/64	3-5/32	2-11/64	M14	33/64	25/32	3-47/64	1.689	0.689	M14	UC207-21	PA207	1.581
UCPA 207-22	1-3/8	1-7/8	4-21/64	3-5/32	2-11/64	M14	33/64	25/32	3-47/64	1.689	0.689	M14	UC207-22	PA207	1.551
UCPA 207-23	1-7/16	1-7/8	4-21/64	3-5/32	2-11/64	M14	33/64	25/32	3-47/64	1.689	0.689	M14	UC207-23	PA207	1.521
UCPA208	40	49.2	116	84	58	M14	13	20	100	49.2	19	M14	UC208	PA208	1.798
UCPA 208-24	1-1/2	1-15/16	4-9/16	3-5/16	2-9/32	M14	33/64	25/32	3-15/16	1.937	0.748	M14	UC208-24	PA208	1.838
UCPA 208-25	1-9/16	1-15/16	4-9/16	3-5/16	2-9/32	M14	33/64	25/32	3-15/16	1.937	0.748	M14	UC208-25	PA208	1.808
UCPA209	45	54.2	120	90	60	M14	13	25	108	49.2	19	M14	UC209	PA209	2.053
UCPA 209-26	1-5/8	2-9/64	4-23/32	3-35/64	2-23/64	M14	33/64	63/64	4-1/4	1.937	0.748	M14	UC209-26	PA209	2.153
UCPA 209-27	1-11/16	2-9/64	4-23/32	3-35/64	2-23/64	M14	33/64	63/64	4-1/4	1.937	0.748	M14	UC209-27	PA209	2.113
UCPA 209-28	1-3/4	2-9/64	4-23/32	3-35/64	2-23/64	M14	33/64	63/64	4-1/4	1.937	0.748	M14	UC209-28	PA209	2.073
UCPA210	50	57.2	130	94	64	M16	14	25	116	51.6	19	M16	UC210	PA210	2.556
UCPA 210-29	1-13/16	2-1/4	5-1/8	3-45/64	2-33/64	M16	35/64	63/64	4-9/16	2.0315	0.748	M16	UC210-29	PA210	2.676
UCPA 210-30	1-7/8	2-1/4	5-1/8	3-45/64	2-33/64	M16	35/64	63/64	4-9/16	2.0315	0.748	M16	UC210-30	PA210	2.626
UCPA 210-31	1-15/16	2-1/4	5-1/8	3-45/64	2-33/64	M16	35/64	63/64	4-9/16	2.0315	0.748	M16	UC210-31	PA210	2.576
UCPA 210-32	2	2-1/4	5-1/8	3-45/64	2-33/64	M16	35/64	63/64	4-9/16	2.0315	0.748	M16	UC210-32	PA210	2.536
UCPA211	55	63.5	140	104	66	M16	14	25	125	55.6	22.2	M16	UC211	PA211	3.138
UCPA 211-32	2	2-1/2	5-33/64	4-3/32	2-19/32	M16	35/64	63/64	4-59/64	2.189	0.874	M16	UC211-32	PA211	3.288
UCPA 211-33	2-1/16	2-1/2	5-33/64	4-3/32	2-19/32	M16	35/64	63/64	4-59/64	2.189	0.874	M16	UC211-33	PA211	3.228
UCPA 211-34	2-1/8	2-1/2	5-33/64	4-3/32	2-19/32	M16	35/64	63/64	4-59/64	2.189	0.874	M16	UC211-34	PA211	3.188
UCPA 211-35	2-3/16	2-1/2	5-33/64	4-3/32	2-19/32	M16	35/64	63/64	4-59/64	2.189	0.874	M16	UC211-35	PA211	3.118
UCPA212	60	69.9	150	114	68	M16	15	25	138	65.1	25.4	M16	UC212	PA212	4.12
UCPA 212-36	2-1/4	2-3/4	5-29/32	4-31/64	2-43/64	M16	19/32	63/64	5-7/16	2.563	1	M16	UC212-36	PA212	4.25
UCPA 212-37	2-5/16	2-3/4	5-29/32	4-31/64	2-43/64	M16	19/32	63/64	5-7/16	2.563	1	M16	UC212-37	PA212	4.17
UCPA 212-38	2-3/8	2-3/4	5-29/32	4-31/64	2-43/64	M16	19/32	63/64	5-7/16	2.563	1	M16	UC212-38	PA212	4.1
UCPA 212-39	2-7/16	2-3/4	5-29/32	4-31/64	2-43/64	M16	19/32	63/64	5-7/16	2.563	1	M16	UC212-39	PA212	4.03
UCPA213	65	76.2	160	124	70	M16	15	25	150	65.1	25.4	M16	UC213	PA213	4.915
UCPA 213-40	2-1/2	3	6-19/64	4-7/8	2-3/4	M16	19/32	63/64	5-29/32	2.563	1	M16	UC213-40	PA213	5.005
UCPA 213-41	2-9/16	3	6-19/64	4-7/8	2-3/4	M16	19/32	63/64	5-29/32	2.563	1	M16	UC213-41	PA213	4.915

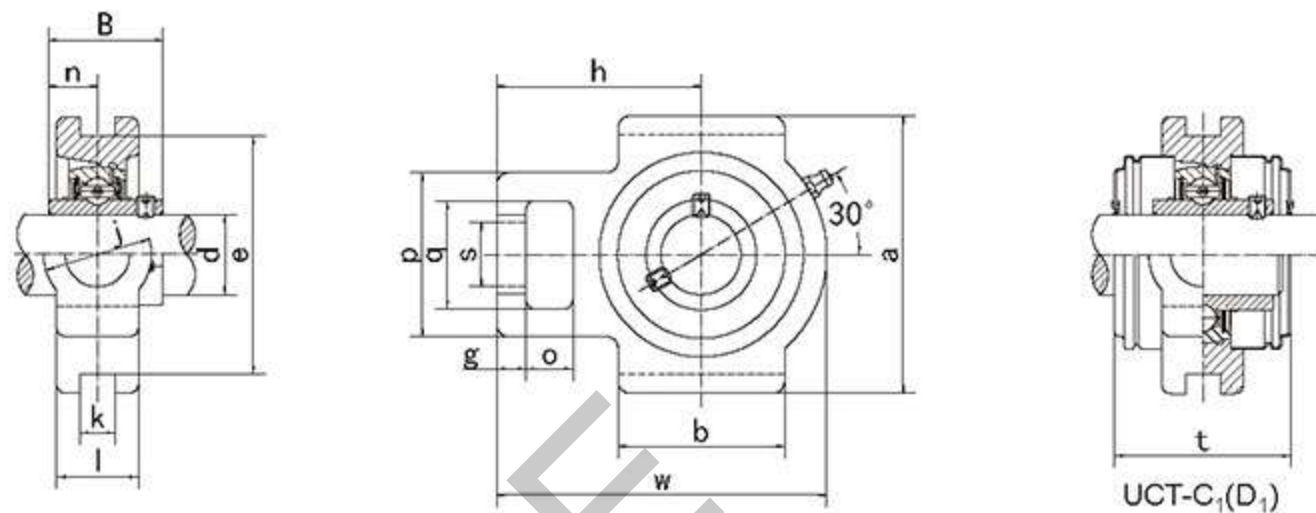


Unit NO.	Dimensions(mm/in.)											Bolt Size mm/in.	Bearing NO.	Housing NO.	Weight(kg)
	d	h	a	e	b	s	g	l	w	B	n				
SS-UCPA 213-41	2-9/16	3	6-19/64	4-7/8	2-3/4	M16	19/32	63/64	5-29/32	2.563	1	M16	SS-UC213-41	PA213	4.915
SS-UCPA 213-40	2-1/2	3	6-19/64	4-7/8	2-3/4	M16	19/32	63/64	5-29/32	2.563	1	M16	SS-UC213-40	PA213	5.005
SS-UCPA213	65	76.2	160	124	70	M16	15	25	150	65.1	25.4	M16	SS-UC213	PA213	4.915
SS-UCPA 212-39	2-7/16	2-3/4	5-29/32	4-31/64	2-43/64	M16	19/32	63/64	5-7/16	2.563	1	M16	SS-UC212-39	PA212	4.03
SS-UCPA 212-38	2-3/8	2-3/4	5-29/32	4-31/64	2-43/64	M16	19/32	63/64	5-7/16	2.563	1	M16	SS-UC212-38	PA212	4.1
SS-UCPA 212-37	2-5/16	2-3/4	5-29/32	4-31/64	2-43/64	M16	19/32	63/64	5-7/16	2.563	1	M16	SS-UC212-37	PA212	4.17
SS-UCPA 212-36	2-1/4	2-3/4	5-29/32	4-31/64	2-43/64	M16	19/32	63/64	5-7/16	2.563	1	M16	SS-UC212-36	PA212	4.25
SS-UCPA212	60	69.9	150	114	68	M16	15	25	138	65.1	25.4	M16	SS-UC212	PA212	4.12
SS-UCPA 211-35	2-3/16	2-1/2	5-33/64	4-3/32	2-19/32	M16	35/64	63/64	4-59/64	2.189	0.874	M16	SS-UC211-35	PA211	3.118
SS-UCPA 211-34	2-1/8	2-1/2	5-33/64	4-3/32	2-19/32	M16	35/64	63/64	4-59/64	2.189	0.874	M16	SS-UC211-34	PA211	3.188
SS-UCPA 211-33	2-1/16	2-1/2	5-33/64	4-3/32	2-19/32	M16	35/64	63/64	4-59/64	2.189	0.874	M16	SS-UC211-33	PA211	3.228
SS-UCPA 211-32	2	2-1/2	5-33/64	4-3/32	2-19/32	M16	35/64	63/64	4-59/64	2.189	0.874	M16	SS-UC211-32	PA211	3.288
SS-UCPA211	55	63.5	140	104	66	M16	14	25	125	55.6	22.2	M16	SS-UC211	PA211	3.138
SS-UCPA 210-32	2	2-1/4	5-1/8	3-45/64	2-33/64	M16	35/64	63/64	4-9/16	2.0315	0.748	M16	SS-UC210-32	PA210	2.536
SS-UCPA 210-31	1-15/16	2-1/4	5-1/8	3-45/64	2-33/64	M16	35/64	63/64	4-9/16	2.0315	0.748	M16	SS-UC210-31	PA210	2.576
SS-UCPA 210-30	1-7/8	2-1/4	5-1/8	3-45/64	2-33/64	M16	35/64	63/64	4-9/16	2.0315	0.748	M16	SS-UC210-30	PA210	2.626
SS-UCPA 210-29	1-13/16	2-1/4	5-1/8	3-45/64	2-33/64	M16	35/64	63/64	4-9/16	2.0315	0.748	M16	SS-UC210-29	PA210	2.676
SS-UCPA210	50	57.2	130	94	64	M16	14	25	116	51.6	19	M16	SS-UC210	PA210	2.556
SS-UCPA 209-28	1-3/4	2-9/64	4-23/32	3-35/64	2-23/64	M14	33/64	63/64	4-1/4	1.937	0.748	M14	SS-UC209-28	PA209	2.073
SS-UCPA 209-27	1-11/16	2-9/64	4-23/32	3-35/64	2-23/64	M14	33/64	63/64	4-1/4	1.937	0.748	M14	SS-UC209-27	PA209	2.113



UCT-C_i(D₁)

Unit NO.	Dimensions(mm/in.)																	Bearing NO.	Housing NO.	Weight(kg)
	d	o	g	p	q	s	b	k	e	a	w	j	l	h	t	B	n			
UCT201	12	16	10	51	32	19	51	12	76	89	94	32	21	61	44.5	31	12.7	UC201	T201	0.77
UCT 201-8	1/2	5/8	25/64	2-1/64	1-1/4	3/4	2-1/64	15/32	2-63/64	3-1/2	3-11/16	1-1/4	53/64	2-13/32	1-3/4	1.2205	0.5	UC201-8	T201	0.76
UCT202	15	16	10	51	32	19	51	12	76	89	94	32	21	61	44.5	31	12.7	UC202	T202	0.76
UCT 202-9	9/16	5/8	25/64	2-1/64	1-1/4	3/4	2-1/64	15/32	2-63/64	3-1/2	3-11/16	1-1/4	53/64	2-13/32	1-3/4	1.2205	0.5	UC202-9	T202	0.76
UCT203	17	16	10	51	32	19	51	12	76	89	94	32	21	61	44.5	31	12.7	UC203	T203	0.75
UCT 202-10	5/8	5/8	25/64	2-1/64	1-1/4	3/4	2-1/64	15/32	2-63/64	3-1/2	3-11/16	1-1/4	53/64	2-13/32	1-3/4	1.2205	0.5	UC202-10	T202	0.76
UCT 203-11	11/16	5/8	25/64	2-1/64	1-1/4	3/4	2-1/64	15/32	2-63/64	3-1/2	3-11/16	1-1/4	53/64	2-13/32	1-3/4	1.2205	0.5	UC203-11	T203	0.74
UCT 204-12	3/4	5/8	25/64	2-1/64	1-1/4	3/4	2-1/64	15/32	2-63/64	3-1/2	3-11/16	1-1/4	53/64	2-13/32	1-3/4	1.2205	0.5	UC204-12	T204	0.73
UCT204	20	16	10	51	32	19	51	12	76	89	94	32	21	61	44.5	31	12.7	UC204	T204	0.73
UCT205	25	16	10	51	32	19	51	12	76	89	97	32	24	62	48	34.1	14.3	UC205	T205	0.8
UCT 205-14	7/8	5/8	25/64	2-1/64	1-1/4	3/4	2-1/64	15/32	2-63/64	3-1/2	3-13/16	1-1/4	15/16	2-7/16	1-7/8	1.3425	0.563	UC205-14	T205	0.83
UCT 205-13	13/16	5/8	25/64	2-1/64	1-1/4	3/4	2-1/64	15/32	2-63/64	3-1/2	3-13/16	1-1/4	15/16	2-7/16	1-7/8	1.3425	0.563	UC205-13	T205	0.84
UCT 205-16	1	5/8	25/64	2-1/64	1-1/4	3/4	2-1/64	15/32	2-63/64	3-1/2	3-13/16	1-1/4	15/16	2-7/16	1-7/8	1.3425	0.563	UC205-16	T205	0.8
UCT 205-15	15/16	5/8	25/64	2-1/64	1-1/4	3/4	2-1/64	15/32	2-63/64	3-1/2	3-13/16	1-1/4	15/16	2-7/16	1-7/8	1.3425	0.563	UC205-15	T205	0.81
UCT206	30	16	10	56	37	22	57	12	89	102	113	37	28	70	53	38.1	15.9	UC206	T206	1.22
UCT 206-18	1-1/8	5/8	25/64	2-7/32	1-29/64	55/64	2-1/4	15/32	3-1/2	4-1/64	4-29/64	1-29/64	1-3/32	2-3/4	2-3/32	1.5	0.626	UC206-18	T206	1.24
UCT 206-17	1-1/16	5/8	25/64	2-7/32	1-29/64	55/64	2-1/4	15/32	3-1/2	4-1/64	4-29/64	1-29/64	1-3/32	2-3/4	2-3/32	1.5	0.626	UC206-17	T206	1.23
UCT 206-19	1-3/16	5/8	25/64	2-7/32	1-29/64	55/64	2-1/4	15/32	3-1/2	4-1/64	4-29/64	1-29/64	1-3/32	2-3/4	2-3/32	1.5	0.626	UC206-19	T206	1.22
UCT207	35	16	13	64	37	22	64	12	89	102	129	37	30	78	59.5	42.9	17.5	UC207	T207	1.57
UCT 206-20	1-1/4	5/8	25/64	2-7/32	1-29/64	55/64	2-1/4	15/32	3-1/2	4-1/64	4-29/64	1-29/64	1-3/32	2-3/4	2-3/32	1.5	0.626	UC206-20	T206	1.21
UCT 207-20	1-1/4	5/8	33/64	2-33/64	1-29/64	55/64	2-33/64	15/32	3-1/2	4-1/64	5-5/64	1-29/64	1-3/16	3-5/64	2-11/32	1.689	0.689	UC207-20	T207	1.63
UCT 207-22	1-3/8	5/8	33/64	2-33/64	1-29/64	55/64	2-33/64	15/32	3-1/2	4-1/64	5-5/64	1-29/64	1-3/16	3-5/64	2-11/32	1.689	0.689	UC207-22	T207	1.57
UCT 207-21	1-5/16	5/8	33/64	2-33/64	1-29/64	55/64	2-33/64	15/32	3-1/2	4-1/64	5-5/64	1-29/64	1-3/16	3-5/64	2-11/32	1.689	0.689	UC207-21	T207	1.6
UCT 207-23	1-7/16	5/8	33/64	2-33/64	1-29/64	55/64	2-33/64	15/32	3-1/2	4-1/64	5-5/64	1-29/64	1-3/16	3-5/64	2-11/32	1.689	0.689	UC207-23	T207	1.54
UCT 208-24	1-1/2	3/4	5/8	3-17/64	1-15/16	1-9/64	3-17/64	5/8	4-1/64	4-31/64	5-43/64	1-15/16	1-19/64	3-1/2	2-23/32	1.937	0.748	UC208-24	T208	2.35
UCT208	40	19	16	83	49	29	83	16	102	114	144	49	33	89	69	49.2	19	UC208	T208	2.31
UCT209	45	19	16	83	49	29	83	16	102	117	144	49	35	87	69	49.2	19	UC209	T209	2.34
UCT 208-25	1-9/16	3/4	5/8	3-17/64	1-15/16	1-9/64	3-17/64	5/8	4-1/64	4-31/64	5-43/64	1-15/16	1-19/64	3-1/2	2-23/32	1.937	0.748	UC208-25	T208	2.32
UCT 209-26	1-5/8	3/4	5/8	3-17/64	1-15/16	1-9/64	3-17/64	5/8	4-1/64	4-39/64	5-43/64	1-15/16	1-3/8	3-27/64	2-23/32	1.937	0.748	UC209-26	T209	2.44
UCT 209-28	1-3/4	3/4	5/8	3-17/64	1-15/16	1-9/64	3-17/64	5/8	4-1/64	4-39/64	5-43/64	1-15/16	1-3/8	3-27/64	2-23/32	1.937	0.748	UC209-28	T209	2.36
UCT 209-27	1-11/16	3/4	5/8	3-17/64	1-15/16	1-9/64	3-17/64	5/8	4-1/64	4-39/64	5-43/64	1-15/16	1-3/8	3-27/64	2-23/32	1.937	0.748	UC209-27	T209	2.4
UCT 210-29	1-13/16	3/4	5/8	3-17/64	1-15/16	1-9/64	3-17/64	5/8	4-1/64	4-39/64	5-55/64	1-15/16	1-29/64	3-35/64	2-15/16	2.0315	0.748	UC210-29	T210	2.59
UCT210	50	19	16	83	49	29	86	16	102	117	149	49	37	90	74.5	51.6	19	UC210	T210	2.47
UCT 210-30	1-7/8	3/4	5/8	3-17/64	1-15/16	1-9/64	3-17/64	5/8	4-1/64	4-39/64	5-55/64	1-15/16	1-29/64	3-35/64	2-15/16	2.0315	0.748	UC210-30	T210	2.54
UCT 210-31	1-15/16	3/4	5/8	3-17/64	1-15/16	1-9/64	3-17/64	5/8	4-1/64	4-39/64	5-55/64	1-15/16	1-29/64	3-35/64	2-15/16	2.0315	0.748	UC210-31	T210	2.49
UCT 210-32	2	3/4	5/8	3-17/64	1-15/16	1-9/64	3-17/64	5/8	4-1/64	4-39/64	5-55/64	1-15/16	1-29/64	3-35/64	2-15/16	2.0315</				



Unit NO.	Dimensions(mm/in.)																	Bearing NO.	Housing NO.	Weight(kg)
	d	o	g	p	q	s	b	k	e	a	w	j	l	h	t	B	n			
SS-UCT 218-56	3-1/2	1-37/64	1-3/16	5-1/8	3-5/32	1-57/64	5-35/64	1-3/16	7-31/64	8-15/32	10-53/64	3-5/32	2-11/64	6-11/16	4-27/32	3.7795	1.563	SS-UC218-56	T218	12.3
SS-UCT218	90	40	30	130	80	48	140	30	190	215	275	80	55	170	123	96	39.7	SS-UC218	T218	12.19
SS-UCT 217-55	3-7/16	1-1/2	1-9/64	4-7/8	2-7/8	1-57/64	6-3/16	1-3/16	6-13/16	7-51/64	10-15/64	2-7/8	2-1/8	6-3/8	4-29/64	3.374	1.343	SS-UC217-55	T217	10.45
SS-UCT 217-53	3-5/16	1-1/2	1-9/64	4-7/8	2-7/8	1-57/64	6-3/16	1-3/16	6-13/16	7-51/64	10-15/64	2-7/8	2-1/8	6-3/8	4-29/64	3.374	1.343	SS-UC217-53	T217	10.74
SS-UCT 217-52	3-1/4	1-1/2	1-9/64	4-7/8	2-7/8	1-57/64	6-3/16	1-3/16	6-13/16	7-51/64	10-15/64	2-7/8	2-1/8	6-3/8	4-29/64	3.374	1.343	SS-UC217-52	T217	10.78
SS-UCT217	85	38	29	124	73	48	157	30	173	198	260	73	54	162	113.2	85.7	34.1	SS-UC217	T217	10.66
SS-UCT 216-51	3-3/16	1-17/64	53/64	4-3/8	2-3/4	1-39/64	4-49/64	1-1/32	6-1/2	7-1/4	9-1/4	2-3/4	2	5-33/64	4-19/64	3.252	1.311	SS-UC216-51	T216	8
SS-UCT 216-50	3-1/8	1-17/64	53/64	4-3/8	2-3/4	1-39/64	4-49/64	1-1/32	6-1/2	7-1/4	9-1/4	2-3/4	2	5-33/64	4-19/64	3.252	1.311	SS-UC216-50	T216	8.13
SS-UCT 216-49	3-1/16	1-17/64	53/64	4-3/8	2-3/4	1-39/64	4-49/64	1-1/32	6-1/2	7-1/4	9-1/4	2-3/4	2	5-33/64	4-19/64	3.252	1.311	SS-UC216-49	T216	8.26
SS-UCT216	80	32	21	111	70	41	121	26	165	184	235	70	51	140	109	82.6	33.3	SS-UC216	T216	8.08
SS-UCT 215-48	3	1-17/64	53/64	4-3/8	2-3/4	1-39/64	4-49/64	1-1/32	5-15/16	6-37/64	9-9/64	2-3/4	1-57/64	5-33/64	3-57/64	3.063	1.311	SS-UC215-48	T215	7.13
SS-UCT 215-47	2-15/16	1-17/64	53/64	4-3/8	2-3/4	1-39/64	4-49/64	1-1/32	5-15/16	6-37/64	9-9/64	2-3/4	1-57/64	5-33/64	3-57/64	3.063	1.311	SS-UC215-47	T215	7.33
SS-UCT 215-46	2-7/8	1-17/64	53/64	4-3/8	2-3/4	1-39/64	4-49/64	1-1/32	5-15/16	6-37/64	9-9/64	2-3/4	1-57/64	5-33/64	3-57/64	3.063	1.311	SS-UC215-46	T215	7.44
SS-UCT 215-45	2-13/16	1-17/64	53/64	4-3/8	2-3/4	1-39/64	4-49/64	1-1/32	5-15/16	6-37/64	9-9/64	2-3/4	1-57/64	5-33/64	3-57/64	3.063	1.311	SS-UC215-45	T215	7.19
SS-UCT215	75	32	21	111	70	41	121	26	151	167	232	70	48	140	99	77.8	33.3	SS-UC215	T215	7.19
SS-UCT 214-44	2-3/4	1-17/64	53/64	4-3/8	2-3/4	1-39/64	4-49/64	1-1/32	5-15/16	6-37/64	8-13/16	2-3/4	1-13/16	5-25/64	3-55/64	2.937	1.189	SS-UC214-44	T214	6.75
SS-UCT 214-43	2-11/16	1-17/64	53/64	4-3/8	2-3/4	1-39/64	4-49/64	1-1/32	5-15/16	6-37/64	8-13/16	2-3/4	1-13/16	5-25/64	3-55/64	2.937	1.189	SS-UC214-43	T214	6.85
SS-UCT 214-42	2-5/8	1-17/64	53/64	4-3/8	2-3/4	1-39/64	4-49/64	1-1/32	5-15/16	6-37/64	8-13/16	2-3/4	1-13/16	5-25/64	3-55/64	2.937	1.189	SS-UC214-42	T214	6.95
SS-UCT214	70	32	21	111	70	41	121	26	151	167	224	70	46	137	98	74.6	30.2	SS-UC214	T214	6.74
SS-UCT 213-41	2-9/16	1-17/64	53/64	4-3/8	2-3/4	1-39/64	4-49/64	1-1/32	5-15/16	6-37/64	8-13/16	2-3/4	1-23/32	5-25/64	3-1/2	2.563	1	SS-UC213-41	T213	6.6

ROYSE SEVILLA

Parque Sevilla Industrial
Calle Parsi 7, nº5
41016-Sevilla
Telf: +34 954 671 050
+ 34 954 999 454
sevilla@rodamientos.net

ROYSE MADRID

Pol. Ind. La Postura
Avda. Andalucía, nº166
Ctra. N-IV-Km 24,5
28340-Valdemoro (Madrid)
Telf: +34 918 084 970
madrid@rodamientos.net

ROYSE GRANADA

Pol. Ind. Juncaril
C/Almuñécar, parcela 163
18220-Albolote (Granada)
Telf: +34 958 467 690
granada@rodamientos.net

ROYSE LINARES

Pol. Ind. Los Jarales
C/Mina la Mejor
23700-Linares (Jaén)
Telf: +34 953 693 400
linares@rodamientos.net

ROYSE CÓRDOBA

Pol. Ind. Las Quemadas
C/Andrés Barrera, s/n
Parcela 110A, mod. 4
14014-Córdoba
Telf: +34 957 322 009
cordoba@rodamientos.net

ROYSE ESTEPA

Pol. Ind. Sierra Sur
Avda. de la Innovación, 5
41560-Estepa (Sevilla)
Telf: +34 955 913 975
estepa@rodamientos.net

ROYSE VALENCIA

Parque Empresarial Táctica
C/Carboners, 12 naves 7 y 8
46988-Paterna (Valencia)
Telf: +34 961 345 454
valencia@rodamientos.net

ROYSE VALLADOLID

Pol. Ind. San Cristóbal
C/Plata, nº22, nave A
47012-Valladolid
Telf: +34 983 217 867
valladolid@rodamientos.net

ROYSE RODABUR

Alcalde Martín Cobos, nº15
Pentasa 1, nave 1
09007-Burgos
Telf: +34 947 474 455
burgos@rodamientos.net

ROYSE MÁLAGA

Pol. Ind. San Luis
C/Veracruz, nº 37
29006-Málaga
Telf: +34 951 491 239
malaga@rodamientos.net

ROYSE MURCIA

Pol. Ind. La Polvorista
C/José Colucho Moñino
nave C23
30500-Molina de Segura
(Murcia)
Telf: +34 968 611 050
murcia@rodamientos.net

ROYSE PORRIÑO

Pol. Ind. A Granxa
Rúa C, Paralela 4, Parcela 133
36400-O Porriño
(Pontevedra)
Telf: +34 986 342 870
galicia@rodamientos.net

ROYSE MEDINA

C/Alto de San Juan, nº1-A bajo
47800-Medina de Rioseco
(Valladolid)
Telf: +34 983 217 867
rioseco@rodamientos.net

ROYSE NORTE

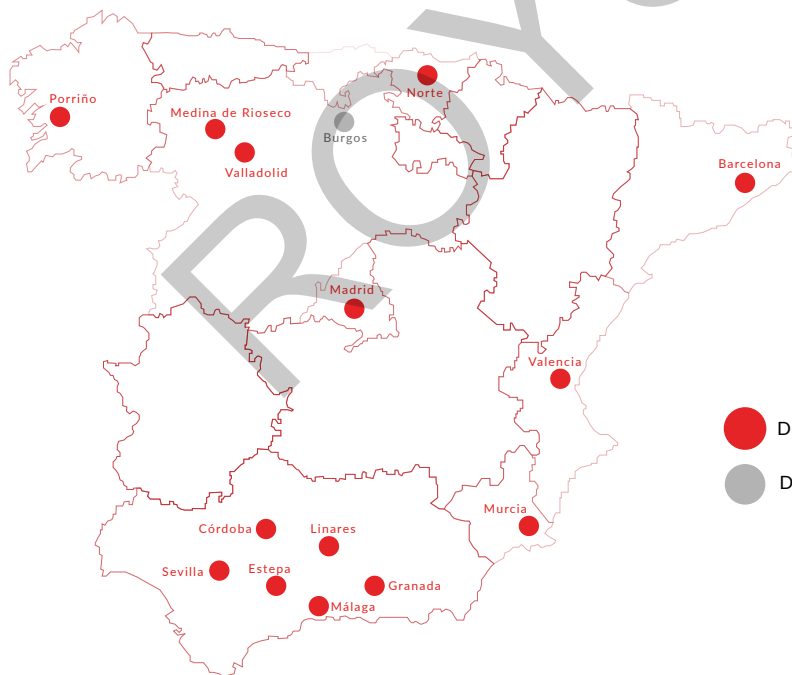
P.I. Txirrita Maleo 2M
20100 - Rentería
(Guipúzcoa)
Telf: +34 943 400 886
norte@rodamientos.net

ROYSE CATALUNYA

P.E. Cervelló, C/Macabeo 10
08758- Cervelló
(Barcelona)
Telf: +34 936 630 740
bcn@rodamientos.net

ROYSE iSM

Parque Sevilla Industrial
Calle Parsi, 3, nº12
41016-Sevilla
Telf: +34 954 999 860



Delegaciones



Distribuidores asociados

