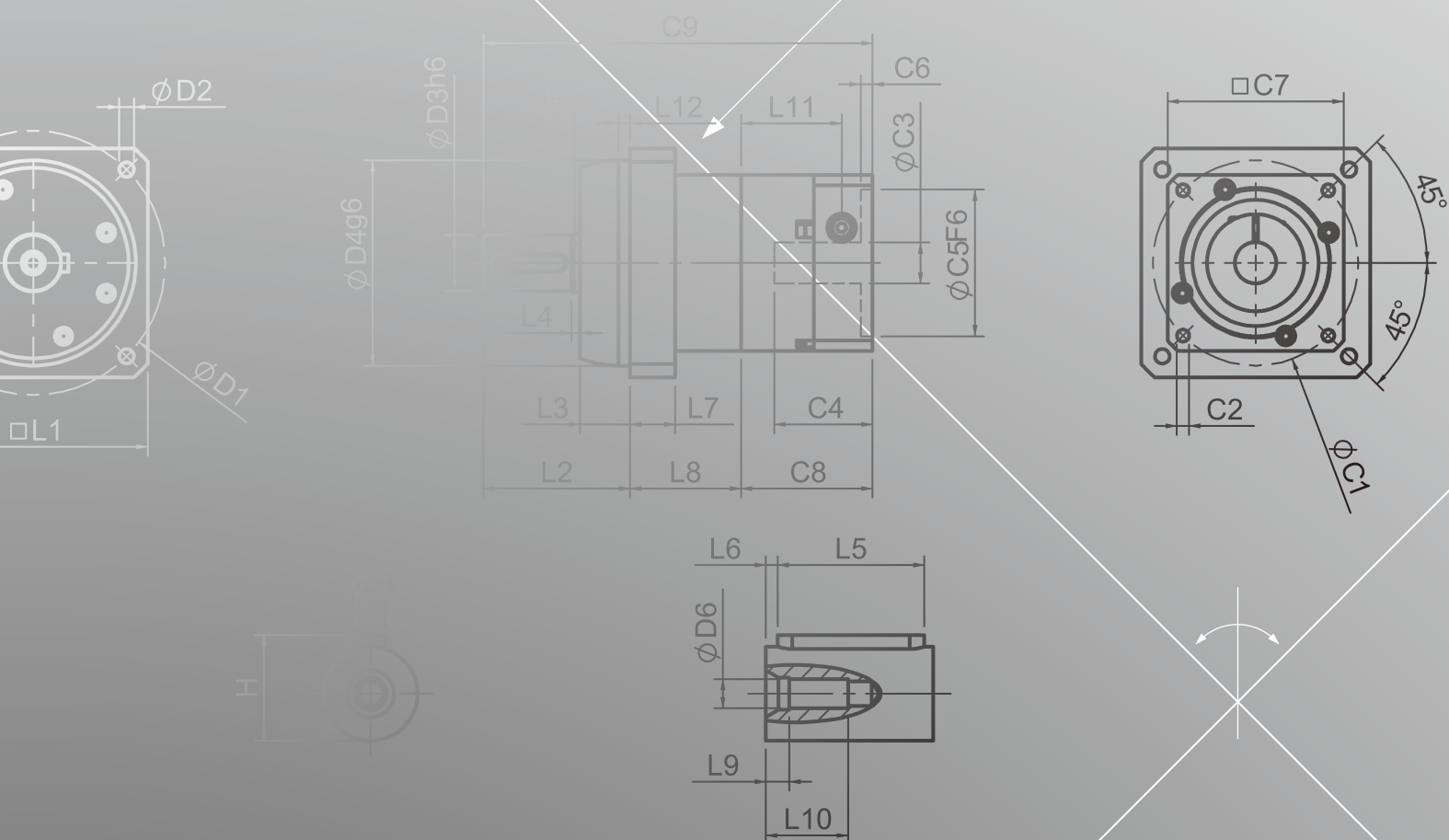


PGS SERIES

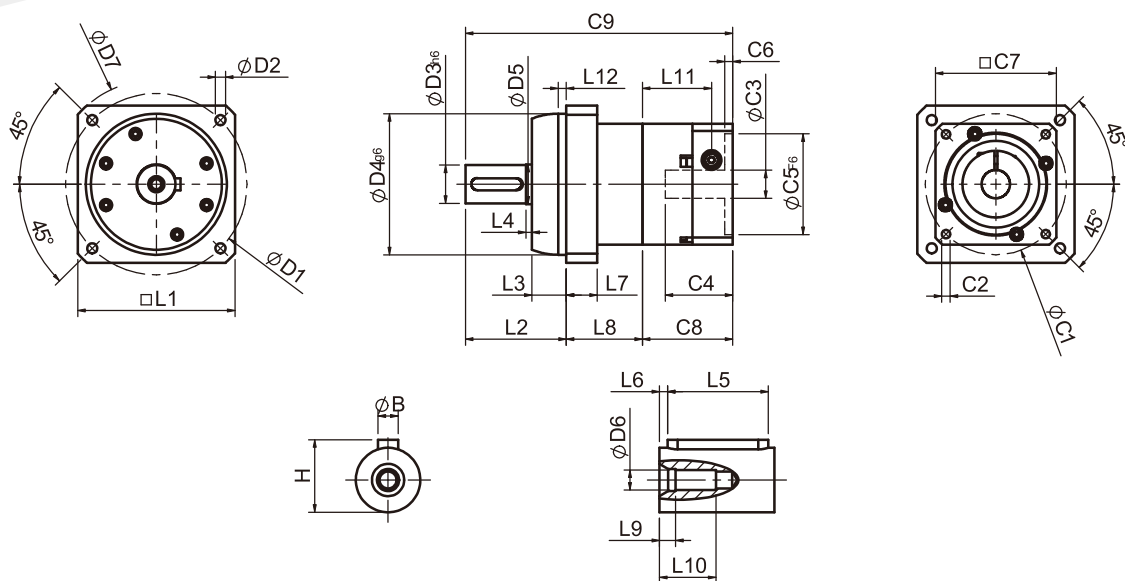


SERVO MOTOR GEARHEADS



PHL
PHFR
PHF
PGH
PUR
PUL
PGLH
PGL
PGC
PGE
PGRH
PGR
PGRF
PGF
PBC
PBE
PAE
PAC
PAN
PGS
PNS

PGS Single Stage Dimensions



Specifications

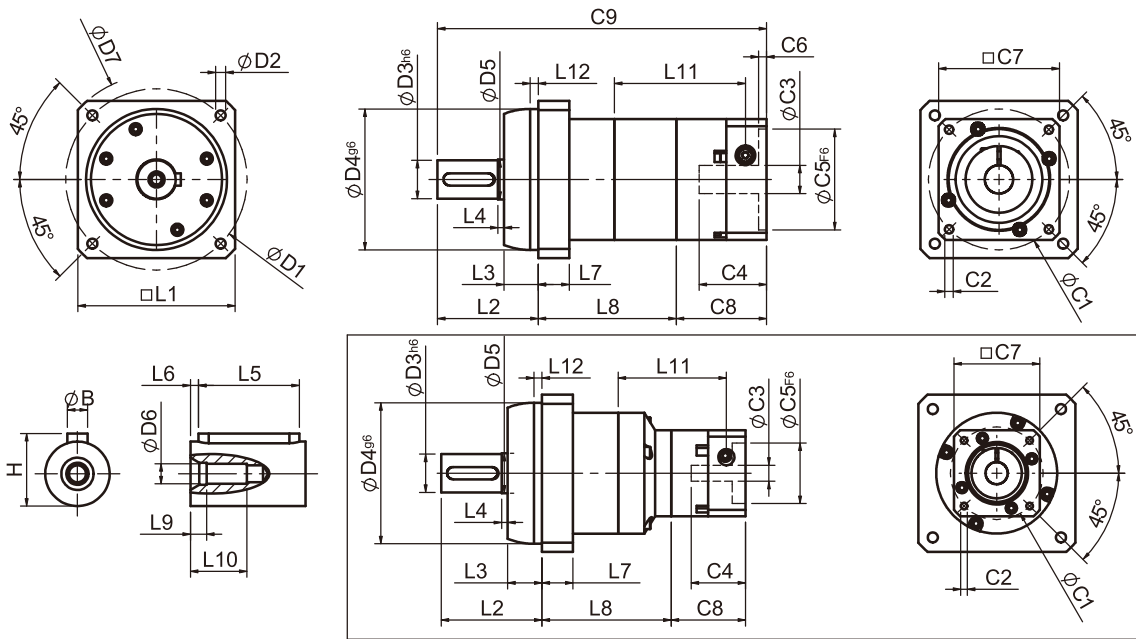
Unit:mm

Dimensions	PGS42	PGS60	PGS90
D1	60	90	115
D2	M5x0.8P	M6x1.0P	M8x1.25P
D3 _{h6}	12	19	24
D4 _{g6}	50	70	90
D5	17	20	30
D6	M4x0.7P	M6x1.0P	M8x1.25P
D7	70	104	132
L1	52	78	98
L2	32	50	61
L3	10	17	18
L4	2	3	1.5
L5	16	25	32
L6	2	3	3
L7	11.5	15.4	18
L8	27.6	37.8	46.2
L9	4	4	4.5
L10	14	16.5	20.5
L11	26.9	34.3	41.55
L12	3	4	5
C1 ²	46	70	90
C2 ²	M4x0.7P	M5x0.8P	M6x1.0P
C3 ²	≤8/≤11	≤14/≤19	≤19/≤24/≤28
C4 ²	26.5	33.5	41
C5 ² _{F6}	30	50	70
C6 ²	4	4	6
C7 ²	42.6	60	90
C8 ²	36.4	44.8	55.8
C9 ²	96	132.6	163
B	4	6	8
H	13.5	21.5	27

★ C1~C9 are motor specific dimensions(metric std shown), Size may vary according to motor flange.

★ Specification subject to change without notice.

PGS Double Stage Dimensions



Specifications

Unit:mm

Dimensions	PGS42	PGS60	PGS60T	PGS90	PGS90T
D1	60	90		115	
D2	M5x0.8P	M6x1.0P		M8x1.25P	
D3 _{h6}	12	19		24	
D4 _{g6}	50	70		90	
D5	17	20		30	
D6	M4x0.7P	M6x1.0P		M8x1.25P	
D7	70	104		132	
L1	52	78		98	
L2	32	50		61	
L3	10	17		18	
L4	2	3		1.5	
L5	16	25		32	
L6	2	3		3	
L7	11.5	15.4		18	
L8	52.5	68.5	64.1	87.2	83.8
L9	4	4		4.5	
L10	14	16.5		20.5	
L11	51.8	34.3	26.9	41.55	34.3
L12	3	4		5	
C1 ²	46	70	46	90	70
C2 ²	M4x0.7P	M5x0.8P	M4x0.7P	M6x1.0P	M5x0.8P
C3 ²	≤8/≤11	≤14/≤19	≤8/≤11	≤19/≤24/≤28	≤14/≤19
C4 ²	26.5	33.5	26.5	41	33.5
C5 ² _{F6}	30	50	30	70	50
C6 ²	4	4	4	6	4
C7 ²	42.6	60	42.6	90	60
C8 ²	36.4	44.8	36.4	55.8	44.8
C9 ²	120.9	163.3	150.5	204	189.6
B	4	6		8	
H	13.5	21.5		27	

★ C1~C9 are motor specific dimensions(metric std shown), Size may vary according to motor flange.

★ Specification subject to change without notice.

PGS Specifications Table

Specifications		Stage	Ratio	PGS-42	PGS-60	PGS-90	PGS-115
Nominal Output Torque T_{2N}	N • m	1	3	9	28	85	250
			4	10	32	80	230
			5	11	35	95	255
			7	10	28	85	210
			9	8	23	75	180
		Stage	Ratio	PGS-42	PGS-60/ PGS-60T	PGS-90/ PGS-90T	PGS-115T
		2	15	11	34	90	250
			20	10	32	80	230
			25	11	35	95	255
			35	11	35	95	255
			45	11	35	95	255
			49	10	28	85	210
			63	10	28	85	210
			81	8	23	75	180
Emergency Stop Torque T_{2NOT}	N • m	3.0 times of Nominal Output Torque (* Max. Output Torque T_{2B} =60% of Emergency Stop Torque)					
Nominal Input Speed n_{1N}	rpm	1,2	3-81	4000	4000	3000	2500
Max. Input Speed n_{1max}	rpm	1,2	3-81	8000	6000	6000	5000
Standard Backlash P2	arcmin	1 2	3-9 15-81	≤ 9 ≤ 12	≤ 8 ≤ 10	≤ 7 ≤ 9	≤ 6 ≤ 8
Torsional Rigidity	N • m /arcmin	1,2	3-81	1.8	5.0	10.5	20
Max. Radial Load F_{2rB}^1	N	1,2	3-81	1120	1720	2800	4600
Max. Axial Load F_{2aB}^1	N	1,2	3-81	520	830	1730	2950
Operating Temp.	°C		3-81	-10 °C ~ +90 °C			
Service Life	hr		3-81	20,000 (10,000/ Continuous operation)			
Efficiency	%	1 2	3-9 15-81	$\geq 95\%$ $\geq 90\%$			
Weight	kg	1 2	3-9 15-81	0.6 0.9	1.5 2.0/1.8	3.4 5.1/4.0	7.8 9.5
Mounting Position	-	1,2	3-81	Any direction			
Noise Level ²	dBA/1m	1,2	3-81	61	63	66	67
Protection Class	-	1,2	3-81	IP65			
Lubrication	-	1,2	3-81	Synthetic Lubricant			
Inertia(J1)							
Stage	Ratio	unit		PGS-42(ψ8)	PGS-60(ψ14)	PGS-90(ψ19)	PGS-115(ψ24)
1	3	Kg • cm ²		0.04	0.23	0.77	2.30
	4			0.03	0.21	0.67	1.92
	5			0.03	0.21	0.61	1.71
	7			0.03	0.21	0.60	1.65
	9			0.03	0.21	0.60	1.63
Stage	Ratio			PGS-42(ψ8)	PGS-60(ψ14)/ PGS-60T(ψ8)	PGS-90(ψ19)/ PGS-90T(ψ14)	PGS-115T(ψ19)
2	15/20/25			0.03	0.21(0.03)	0.61(0.21)	0.61
	35/49			0.03	0.21(0.03)	0.60(0.21)	0.60
	45/63/81			0.03	0.21(0.03)	0.60(0.21)	0.60

* 1. Applied to the output shaft center @100rpm.
* 2. Measured at 3000rpm with no load
※ The above figures/specifications are subject to change without prior notice.

Products due to human error, natural disasters or other factors lead to poor or damaged, will not be covered under warranty.