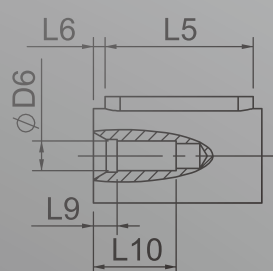
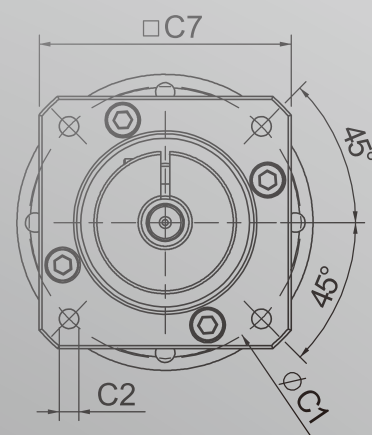
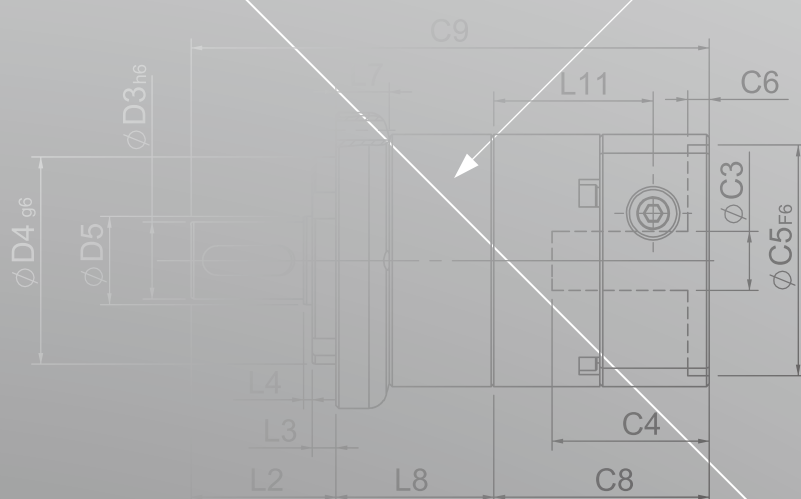


PAC SERIES

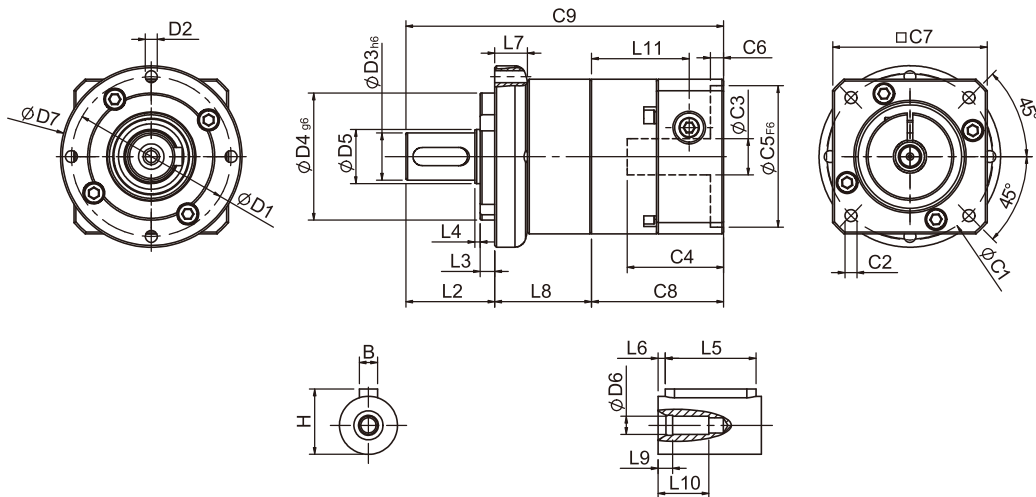


SERVO MOTOR GEARHEADS



PHL
PHFR
PHF
PGH
PUR
PUL
PGLH
PGL
PGC
PGE
PGRH
PGR
PGRF
PGF
PBC
PBE
PAE
PAC
PAN
PGS
PNS

PAC Single Stage Dimensions



Specifications

Unit:mm

Dimensions	PAC50	PAC70	PAC90	PAC115
D1	44	62	80	-
D2	M4x0.7P	M5x0.8P	M6x1.0P	-
D3 _{h6}	12	16	22	-
D4 _{g6}	35	52	68	-
D5	15	20	35	-
D6	M4x0.7P	M5x0.8P	M8x1.25P	-
D7	50	70	90	-
L2	24.5	36	46	-
L3	4	6	7	-
L4	1.5	1.5	2.5	-
L5	15	25	32	-
L6	2	2	3	-
L7	9	13.3	14	-
L8	26.7	37.3	43.8	-
L9	4	4	4.5	-
L10	14	16.5	20.5	-
L11	26.9	34.3	41.5	-
C1 ²	46	70	90	-
C2 ²	M4x0.7P	M5x0.8P	M6x1.0P	-
C3 ²	≤8/≤11	≤14/≤19	≤19/≤24/≤28	-
C4 ²	26.5	33.5	41	-
C5 ² _{F6}	30	50	70	-
C6 ²	4	4	6	-
C7 ²	42.6	60	90	-
C8 ²	36.4	44.8	55.8	-
C9 ²	87.6	118.1	145.6	-
B	4	5	6	-
H	13.5	18	24.5	-

★ C1~C9 are motor specific dimensions(metric std shown), Size may vary according to motor flange.

★ Specification subject to change without notice.

PAC Specifications Table

Specifications		Stage	Ratio	PAC-50	PAC-70	PAC-90	PAC-120
Nominal Output Torque T _{2N}	N • m	1	3	9	28	85	250
			4	10	32	80	240
			5	11	35	95	270
			7	10	28	85	220
			9	8	23	75	210
			10	8	21	65	190
		Stage	Ratio	PAC-50	PAC-60 / PAC-60T	PAC-90 / PAC-90T	PAC-120T
		2	15	11	34	90	250
			20	10	32	80	240
			25	11	35	95	270
			35	11	35	95	270
			45	11	35	95	270
			49	10	28	85	220
			63	10	28	85	220
			81	8	23	75	210
		100	8	21	65	190	
Emergency Stop Torque T _{2NOT}	N • m		3.0 times of Nominal Output Torque (* Max. Output Torque T _{2B} =60% of Emergency Stop Torque)				
Nominal Input Speed n _{1N}	rpm	1,2	3-81	4000	4000	3000	2500
Max. Input Speed n _{1max}	rpm	1,2	3-81	8000	6000	6000	5000
Standard Backlash P2	arcmin	1	3-9	≤ 9	≤ 8	≤ 7	≤ 6
		2	15-81	≤ 12	≤ 10	≤ 9	≤ 8
Torsional Rigidity	N • m /arcmin	1,2	3-81	1.5	4	8.5	17
Max. Radial Load F _{2rB} ¹	N	1,2	3-81	760	1250	2030	4200
Max. Axial Load F _{2aB} ¹	N	1,2	3-81	410	700	1200	2600
Operating Temp.	°C		3-81	-10 °C ~ +90 °C			
Service Life	hr		3-81	20,000 (10,000/Continuous operation)			
Efficiency	%	1	3-9	≥ 95%			
		2	15-81	≥ 90%			
Weight	kg	1	3-9	0.6	1.3	3.2	7.5
		2	15-81	0.8	1.8/1.6	4.8/3.7	9.2
Mounting Position	-	1,2	3-81	Any direction			
Noise Level ²	dBA/1m	1,2	3-81	61	63	66	67
Protection Class	-	1,2	3-81	IP65			
Lubrication	-	1,2	3-81	Synthetic Lubricant			
Inertia(J1)							
Stage	Ratio	unit		PAC-50(ψ8)	PAC-70(ψ14)	PAC-90(ψ19)	PAC-120(ψ24)
1	3	Kg • cm ²		0.04	0.23	0.77	2.30
	4			0.03	0.21	0.67	1.92
	5			0.03	0.21	0.61	1.71
	7			0.03	0.21	0.60	1.65
	9			0.03	0.21	0.60	1.63
	10			0.03	0.21	0.60	1.63
Stage	Ratio			PAC-50(ψ8)	PAC-70(ψ14) / PAC-70T(ψ8)	PAC-90(ψ19) / PAC-90T(ψ14)	PAC-120T(ψ19)
2	15/20/25			0.03	0.21(0.03)	0.61(0.21)	0.61
	35/49			0.03	0.21(0.03)	0.60(0.21)	0.60
	45/63/81/100			0.03	0.21(0.03)	0.60(0.21)	0.60

* 1. Applied to the output shaft center @100rpm.
* 2.Measured at 3000rpm with no load
※ The above figures/specifications are subject to change without prior notice.

Products due to human error, natural disasters or other factors lead to poor or damaged, will not be covered under warranty.