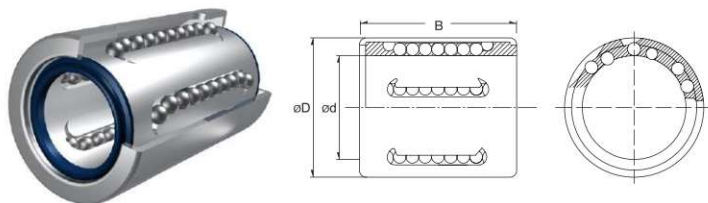


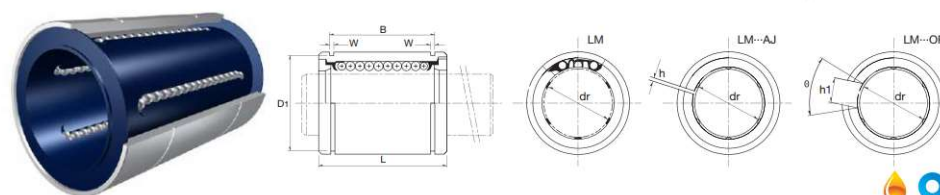
## Linearkugellager der Type / Linear Bearing KH



294

Designation/Type	Dimension (mm)			*Load Rating		Mass (g) approx.
	ød	øD	B	C. dyn. N	C. stat. N	
KH-0622 PP	6.0	12.0	22.0	400	239	7 g
KH-0824 PP	8.0	15.0	24.0	435	280	12 g
KH-1026 PP	10.0	17.0	26.0	500	370	14.5 g
KH-1228 PP	12.0	19.0	28.0	620	510	18.5 g
KH-1428 PP	14.0	21.0	28.0	620	520	20.5 g
KH-1630 PP	16.0	24.0	30.0	800	620	27.5 g
KH-2030 PP	20.0	28.0	30.0	950	790	32.5 g
KH-2540 PP	25.0	35.0	40.0	1990	1670	66 g
KH-3050 PP	30.0	40.0	50.0	2800	2700	95 g
KH-4060 PP	40.0	52.0	60.0	4400	4450	182 g
KH-5070 PP	50.0	62.0	70.0	5500	6300	252 g

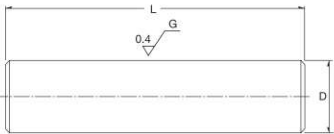
## Linearkugellager der Type / Linear Bearing LM



295

Nominal Part No						Nominal Shaft Diameter (mm)	Major Dimensions and Tolerance (mm)								
Standard Type	Seal Type	Ball Circuit	Mass(g) approx.	Adjustable Type	Open Type	dr	D	L	B	W	D1	h	h1	θ	
LM 4	LM 4 UU	4	1.4 g	-	-	4.0	8.0	12.0	-	-	-	-	-	-	
LM 5	LM 5 UU	4	4.0 g	-	-	5.0	10.0	15.0	10.2	1.1	9.6	-	-	-	
LM 6	LM 6 UU	4	8.0 g	LM 6-AJ	-	6.0	12.0	19.0	13.5	1.1	11.5	1.0	-	-	
LM 8S	LM 8S UU	4	11.0 g	LM 8S-AJ	-	8.0	15.0	17.0	11.5	1.1	14.3	1.0	-	-	
LM 8	LM 8 UU	4	16.0 g	LM 8-AJ	-	8.0	15.0	24.0	17.5	1.1	14.3	1.0	-	-	
LM 10	LM10 UU	4	30.0 g	LM 10-AJ	-	10.0	19.0	29.0	22.0	1.3	18.0	1.0			
LM 12	LM 12 UU	4	31.5 g	LM 12-AJ	LM 12-OP	12.0	21.0	30.0	23.0	1.3	20.0	1.5	8.0	80°	
LM 13	LM 13 UU	4	43.0 g	LM 13-AJ	LM 13-OP	13.0	23.0	32.0	23.0	1.3	22.0	1.5	9.0	80°	
LM 16	LM 16 UU	5	69.0 g	LM 16-AJ	LM 16-OP	16.0	28.0	37.0	26.5	1.6	27.0	1.5	11.0	80°	
LM 20	LM 20 UU	5	87.0 g	LM 20-AJ	LM 20-OP	20.0	32.0	42.0	30.5	1.6	30.5	1.5	11.0	60°	
LM 25	LM 25 UU	6	220.0 g	LM 25-AJ	LM 25-OP	25.0	40.0	59.0	41.0	1.85	38.0	2.0	12.0	50°	
LM 30	LM 30 UU	6	250.0 g	LM 30-AJ	LM 30-OP	30.0	45.0	64.0	44.5	1.85	43.0	2.5	15.0	50°	
LM 35	LM 35 UU	6	390.0 g	LM 35-AJ	LM 35-OP	35.0	52.0	70.0	49.5	2.1	49.0	2.5	17.0	50°	
LM 40	LM 40 UU	6	585.0 g	LM 40-AJ	LM 40-OP	40.0	60.0	80.0	60.5	2.1	57.0	3.0	20.0	50°	
LM 50	LM 50 UU	6	1580.0 g	LM 50-AJ	LM 50-OP	50.0	80.0	100.0	74.0	2.6	76.5	3.0	25.0	50°	
LM 60	LM 60 UU	6	2000.0 g	LM 60-AJ	LM 60-OP	60.0	90.0	110.0	85.0	3.15	86.5	3.0	30.0	50°	

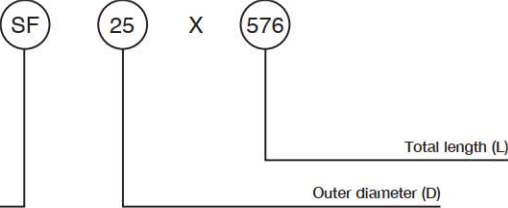
Linearwelle der Type SF / Linear Shafts SF Series



296

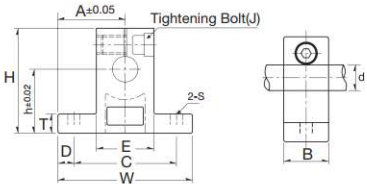
Material

SF	SUJ2	(solid)
SFH	SUJ2	(hollow)
SFC	SUJ2	(solid chrome plating)
SFHC	SUJ2	(hollow chrome plating)
SSF	SUS440	(solid)
SSFH	SUS440	(hollow)
SFS	S45	(solid)
SFSC	S45	(solid chrome plating)



Designation /Type	Outer Diameter		Length L (mm)												Mass (g) approx.
	D (mm)	Tolerance g6 μm	100	200	300	400	500	600	800	1000	1200	1500	1800	2000	
SF 6	6	-4/-12	100				600								230 g
SF 8	8	-5						800							400 g
SF10	10	-14		200					1000						620 g
SF12	12	-6									1500				890 g
SF13	13	-17													1040 g
SF16	16				300								2000		1580 g
SF20	20	-7													2470 g
SF25	25	-20					400								3850 g
SF30	30														5550 g
SF35	35	-9						500							7550 g
SF40	40	-25							600						9870 g
SF50	50									600					15400 g

Wellenhalterung der Type SK / Linear Shaft Support SK Series



Designation /Type	Shaft diameter	Dimension (mm)											Mass (g) approx.
		h	A	W	H	T	E	D	C	B	S	J	
SK8	Ø8	20.0	21.0	42.0	32.8	6.0	18.0	5.0	32.0	14.0	Ø5.5	M4	24 g
SK10	Ø10	20.0	21.0	42.0	32.8	6.0	18.0	5.0	32.0	14.0	Ø5.5	M4	24 g
SK12	Ø12	23.0	21.0	42.0	38.0	6.0	20.0	5.0	32.0	14.0	Ø5.5	M4	30 g
SK13	Ø13	23.0	21.0	42.0	38.0	6.0	20.0	5.0	32.0	14.0	Ø5.5	M4	30 g
SK16	Ø16	27.0	24.0	48.0	44.0	8.0	25.0	5.0	38.0	16.0	Ø5.5	M4	40 g
SK20	Ø20	31.0	30.0	60.0	51.0	10.0	30.0	7.5	45.0	20.0	Ø6.6	M5	70 g
SK25	Ø25	35.0	35.0	70.0	60.0	12.0	38.0	7.0	56.0	24.0	Ø6.6	M6	130 g
SK30	Ø30	42.0	42.0	84.0	70.0	12.0	44.0	10.0	64.0	28.0	Ø9	M6	180 g
SK35	Ø35	50.0	49.0	98.0	85.0	15.0	50.0	12.0	74.0	32.0	Ø11	M8	270 g
SK40	Ø40	60.0	57.0	114.0	96.0	15.0	60.0	12.0	90.0	36.0	Ø11	M8	420 g

297