



Movement Technologies

# Bandas Modulares Serie 254

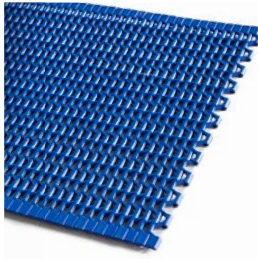




Movement Technologies



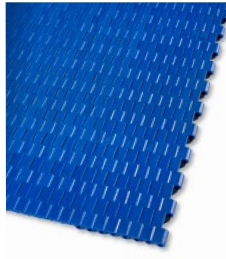
**MP80 C**  
Micropitch Belt Series



**MP80 FG**  
Micropitch Belt Series



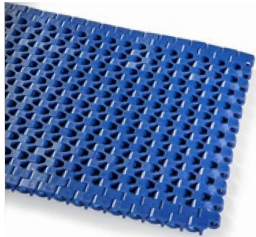
**MP80 NS**  
Micropitch Belt Series



**MP80 NP**  
Micropitch Belt Series



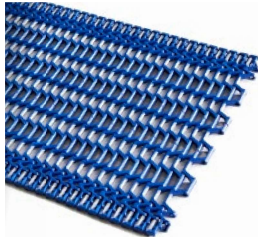
**EC127 C**



**EC127 FG**



**EC127 GT**



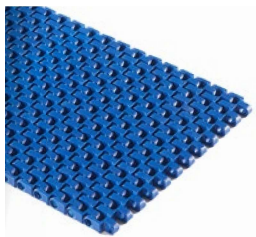
**MD127 GAP%50**



**HC127 C**



**SM127 C**



**SM127 FG**



**SM127 CRV**



**XP254 CR**  
Corrugated & Logistic Belt Series



**XP254 FLT CR**  
Corrugated & Logistic Belt Series



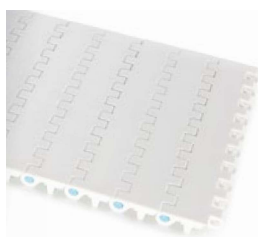
**XP254 C**



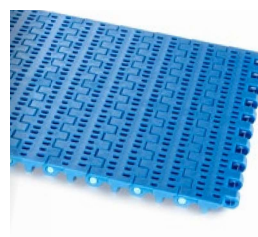
**XP254 PR%22**



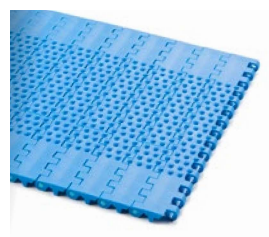
**XP254 FG**



**EC254 C**



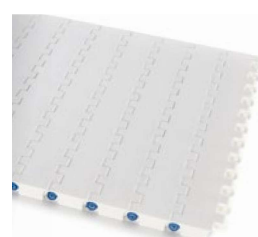
**EC254 PR%16**



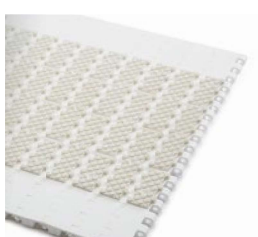
**EC254 NT**



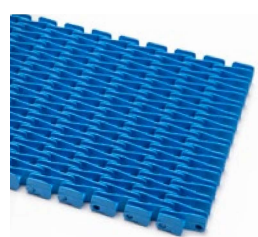
**MD254 FG**



**MD254 C**



**MD254 GT**



**MD254 RR**



**MD254 GAP%48**



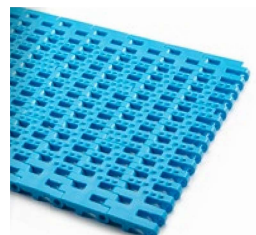
**EC508 C**



**EC508 PR%22**



**EC508 FG**



**EC508 FG-NT**



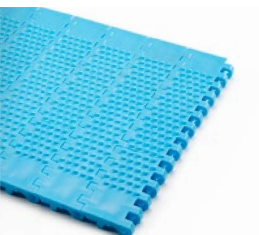
**EC508 PR%11**



**EC508 PR%13**



**EC508 DT**



**EC508 NT**



**MD508 C**



**MD508 FG**



**MD508 PR%25**



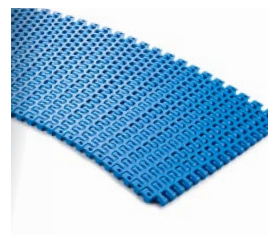
**HP508 RR**



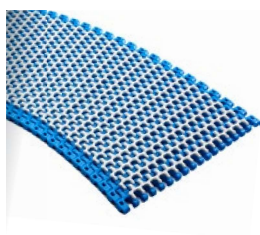
**HP508 FG**  
Battery Belt



**HP508 C**



**EC254 R**  
Radius Belt 2,1



**EC254 R-GT**  
Radius Belt 2,1 with  
friction surface



**EC254T R**  
Tight Radius Belt 1,4



**EC508T R**  
Tight Radius Belt 1,5



# ***XP254***

---

*Corrugated Belt Series*

***XP254 CR***

***XP254 FLT CR***

***Sprockets***

***Engineering Information***









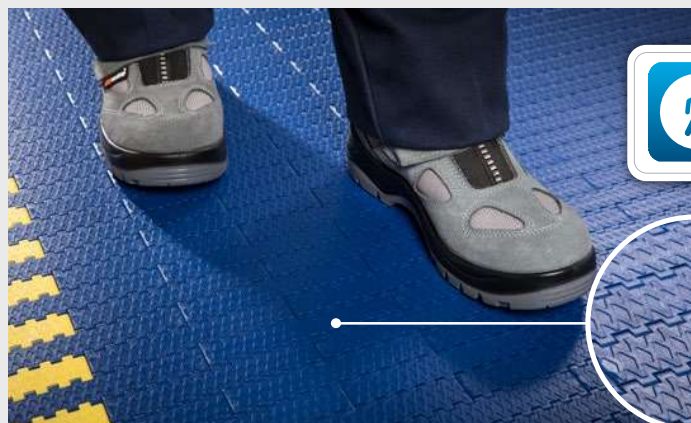


# XP254 CR

## Corrugated Belt Series

### • Corrugated Cardbord Applications

Down Stackers, Corrugator Take Off, Strap Feed



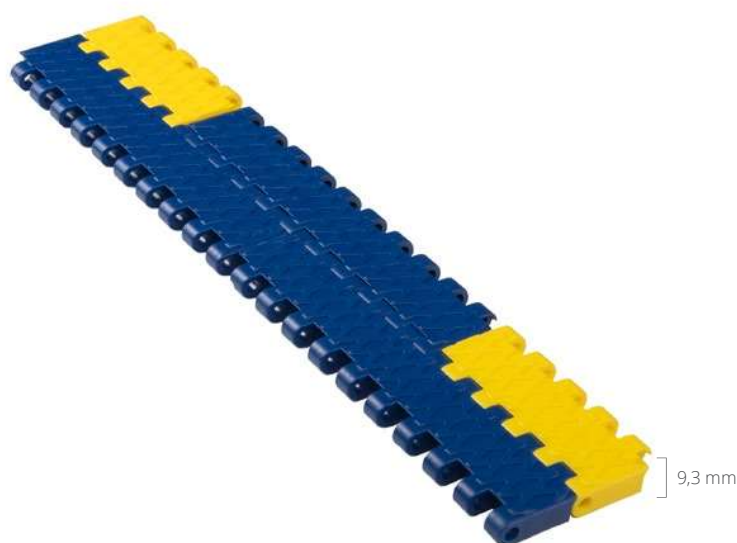
**Safety  
Walking**

Safety First because  
Modutech cares about you!  
Non-Skid surface offers safety  
through walking for corrugated  
industry .



# XP254 CR

Pitch:	25,4 mm / <b>1 inch</b>
Belt Surface:	Close, Non Slip Surface
Minimum Width:	76,2 mm / <b>3 inch</b>
Open Area (%):	0%
Flight:	No
Sidewall:	No
Rod:	Ø4,5 mm / <b>0.177 inch</b> - Self Lock
Approved:	No
Curve:	No
Color:	Additional colors available
Cleanability:	Good
Belt Thickness:	9,3 mm / <b>0.366 inch</b>



## Product Features and Functional Benefits

- Chamfered belt edges.
- Reinforced bottom surface - higher product load and longer conveyors.
- Unique sprocket engagement reduces pulsation and increases load capacity.
- Close transfer applications.
- Extra power, bi-directional belt for long conveyors.
- Safety walking top surface.

## Available Moulded Module Sizes

- 152,4 mm / **6 inch** module
- 76,2 mm / **3 inch** module

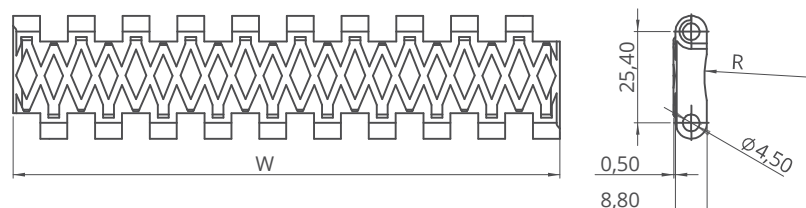
## XP254 CR / Technical Information

BELT / PIN MATERIAL	BELT STRENGTH				TEMPERATURE		BELT WEIGHT
	Straight		Curve		°C / °F (min.)	°C / °F (max.)	Kg/m² / lb/ft²
	N/m	lb/ft	N/m	lb/ft			
Acetal / PA6	40250	<b>2758</b>	-	-	-43 / <b>-45.4</b>	+110 / <b>+230</b>	8,1 / <b>1.67</b>

- Belt strength and temperature values are maximum on the table.

## XP254 CR / Standard Belt Widths

BELT SERIES	WIDTH (W)				Belt With Tolerance (max.)
	PP-PE		POM		
	mm	inch	mm	inch	
XP254 CR	-	-	76,2	<b>3.0</b>	± 0,5 mm
XP254 CR	-	-	152,4	<b>6.0</b>	± 0,5 mm
XP254 CR	-	-	228,6	<b>9.0</b>	± 2 mm
XP254 CR	-	-	304,8	<b>12.0</b>	± 2 mm
XP254 CR	-	-	381,0	<b>15.0</b>	± 3 mm
XP254 CR	-	-	457,2	<b>18.0</b>	± 3 mm
XP254 CR	-	-	533,4	<b>21.0</b>	± 3 mm
XP254 CR	-	-	609,6	<b>24.0</b>	± 3 mm
XP254 CR	-	-	685,8	<b>27.0</b>	± 4 mm
XP254 CR	-	-	762,0	<b>30.0</b>	± 4 mm
XP254 CR	-	-	838,2	<b>33.0</b>	± 4 mm
XP254 CR	-	-	914,4	<b>36.0</b>	± 4 mm
XP254 CR	-	-	990,6	<b>39.0</b>	± 4 mm
XP254 CR	-	-	1066,8	<b>42.0</b>	± 4 mm
XP254 CR	-	-	1143,0	<b>45.0</b>	± 4 mm



- Standard belt increments 76,2 mm.
- Please contact with customer service for precise belt measurements.



# ***XP254 FLT CR***

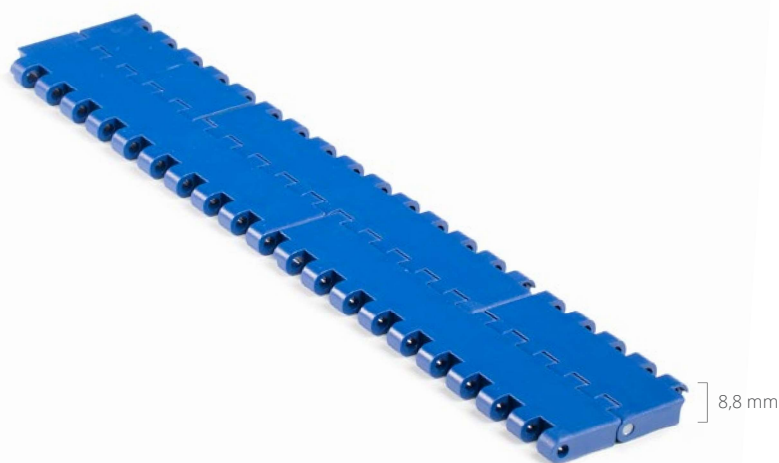
## ***Corrugated Belt Series***

### ***• Corrugated Cardbord Applications***

*Down Stackers, Corrugator Take Off, Strap Feed*

# XP254 FLT CR

Pitch:	25,4 mm / <b>1 inch</b>
Belt Surface:	Close, Smooth Surface
Minimum Width:	76,2 mm / <b>3 inch</b>
Open Area (%):	0%
Flight:	No
Sidewall:	No
Rod:	Ø4,5 mm / <b>0.177 inch</b> - Self Lock
Approved:	No
Curve:	No
Color:	Additional colors available
Cleanability:	Good
Belt Thickness:	8,8 mm / <b>0.346 inch</b>



## Product Features and Functional Benefits

- Chamfered belt edges.
- Reinforced bottom surface - higher product load and longer conveyors.
- Unique sprocket engagement reduces pulsation and increases load capacity.
- Close transfer applications.
- Extra power, bi-directional belt for long conveyors.

## Available Moulded Module Sizes

- 152,4 mm / **6 inch** module
- 76,2 mm / **3 inch** module

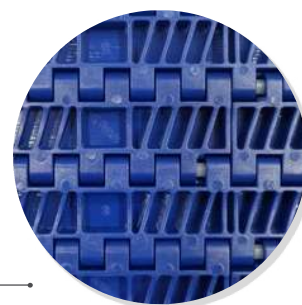
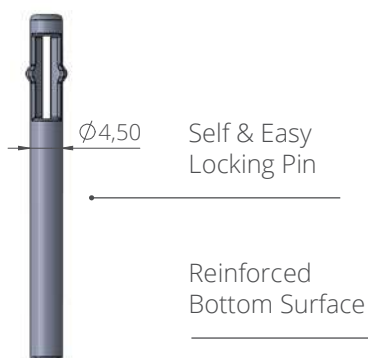
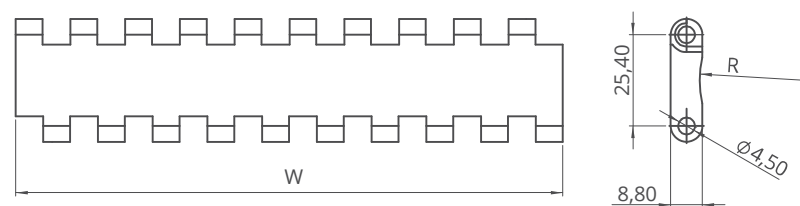
## XP254 FLT CR / Technical Information

BELT / PIN MATERIAL	BELT STRENGTH				TEMPERATURE		BELT WEIGHT
	Straight		Curve		°C / °F (min.)	°C / °F (max.)	Kg/m² / lb/ft²
	N/m	lb/ft	N/m	lb/ft			
Acetal / PA6	40250	<b>2758</b>	-	-	-43 / <b>-45.4</b>	+110 / <b>+230</b>	8,1 / <b>1.67</b>

- Belt strength and temperature values are maximum on the table.

## XP254 FLT CR / Standard Belt Widths

BELT SERIES	WIDTH (W)				Belt With Tolerance (max.)
	PP-PE		POM		
	mm	inch	mm	inch	
XP254 FLTCR	-	-	76,2	<b>3.0</b>	± 0,5 mm
XP254 FLTCR	-	-	152,4	<b>6.0</b>	± 0,5 mm
XP254 FLTCR	-	-	228,6	<b>9.0</b>	± 2 mm
XP254 FLTCR	-	-	304,8	<b>12.0</b>	± 2 mm
XP254 FLTCR	-	-	381,0	<b>15.0</b>	± 3 mm
XP254 FLTCR	-	-	457,2	<b>18.0</b>	± 3 mm
XP254 FLTCR	-	-	533,4	<b>21.0</b>	± 3 mm
XP254 FLTCR	-	-	609,6	<b>24.0</b>	± 3 mm
XP254 FLTCR	-	-	685,8	<b>27.0</b>	± 4 mm
XP254 FLTCR	-	-	762,0	<b>30.0</b>	± 4 mm
XP254 FLTCR	-	-	838,2	<b>33.0</b>	± 4 mm
XP254 FLTCR	-	-	914,4	<b>36.0</b>	± 4 mm
XP254 FLTCR	-	-	990,6	<b>39.0</b>	± 4 mm
XP254 FLTCR	-	-	1066,8	<b>42.0</b>	± 4 mm
XP254 FLTCR	-	-	1143,0	<b>45.0</b>	± 4 mm



- Standard belt increments 76,2 mm.
- Please contact with customer service for precise belt measurements.



# *XP254*

*Modular Belt Series*

*XP254 C*

*XP254 PR %22*

*XP254 FG*

*Sprockets & Accessories*

*Engineering Information*









# XP254 C

## Modular Belt Series

- **Seafood Applications**

*Inspection Tables, Grading Lines, Trim Lines*

- **Bakery Applications**

*Row Dough Handling, Cooling Lines, Packing Lines*

- **Snack Food Applications**

*Corn Processing*

- **Fruits and Vegetables Applications**

*Bulk Feeding, Elevator, Control - Sorting Table*

- **Tire Manufacturing Applications**

*Mixer Infeed - Outfeed, Calendering Infeed, Extrusion Outfeed*

- **Packaging Applications**

*Labelling, Case Packers, Tray Packers, Palletizing - Depalletizing*

- **Printing and Paper Applications**

*Printing Machine Outfeed, Wrapping Machine Outfeed*

- **Beverages and Bottling Applications**

*Can Palletizing and Depalletizing, Glass Palletizing and Depalletizing,*

*Pet Palletizing and Depalletizing*

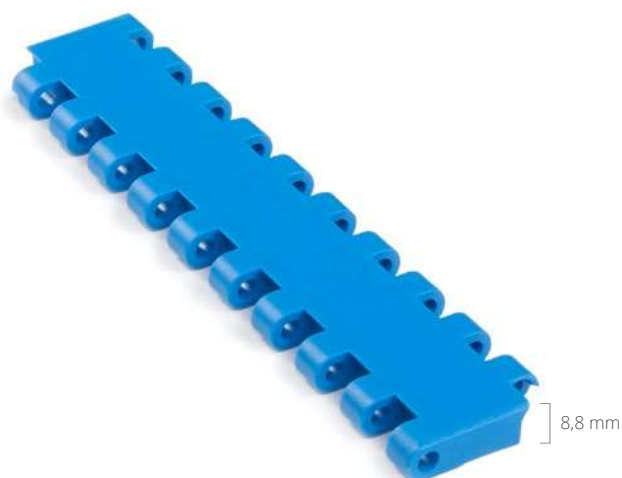
- **Material Handling Applications**

*Incline Applications, Palletizers, Packaging Lines*



# XP254 C

Pitch:	25,4 mm / <b>1 inch</b>
Belt Surface:	Close, Smooth Surface
Minimum Width:	76,2 mm / <b>3 inch</b>
Open Area (%):	0%
Flight:	Yes ( T25, T50, T75, T100 )
Sidewall:	Yes ( h=25 mm, h=50 mm, h=75 mm, h=100 mm )
Rod:	Ø4,5 mm / <b>0.177 inch</b> - Self Lock
Approved:	FDA and EU
Curve:	No
Color:	Additional colors available
Cleanability:	Good
Belt Thickness:	8.8 mm / <b>0.346 inch</b>



## Product Features and Functional Benefits

- Unique sprocket engagement - higher product load and longer conveyors.
- Unique sprocket engagement reduces pulsation and increases load capacity.
- Close transfer applications.
- Extra power, bi-directional belt for long conveyors.
- Chamfered belt edges.

## Available Moulded Module Sizes

- 152,4 mm / **6 inch** module
- 76,2 mm / **3 inch** module

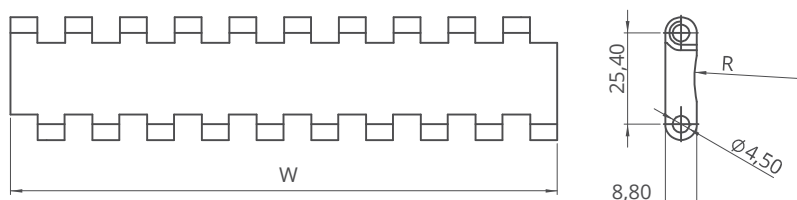
## XP254 C / Technical Information

BELT MATERIAL	BELT STRENGTH				TEMPERATURE		BELT WEIGHT
	Straight		Curve		°C / °F (min.)	°C / °F (max.)	Kg/m² / lb/ft²
	N/m	lb/ft	N/m	lb/ft			
Polypropylene	18400	<b>1260.80</b>	-	-	+5 / <b>+41</b>	+90 / <b>+194</b>	5,50 / <b>1.13</b>
Polyethylene	9100	<b>623.55</b>	-	-	-73 / <b>-99.4</b>	+66 / <b>+150.8</b>	5,80 / <b>1.19</b>
Acetal	32100	<b>2199.55</b>	-	-	-43 / <b>-45.4</b>	+110 / <b>+230</b>	7,90 / <b>1.62</b>

- Belt strength and temperature values are maximum on the table.

## XP254 C / Standard Belt Widths

BELT SERIES	WIDTH (W)				Belt With Tolerance (max.)
	PP-PE		POM		
	mm	inch	mm	inch	
XP254 C	152,4	<b>6.0</b>	152,4	<b>6.0</b>	± 0,5 mm
XP254 C	228,6	<b>9.0</b>	228,6	<b>9.0</b>	± 2 mm
XP254 C	304,8	<b>12.0</b>	304,8	<b>12.0</b>	± 2 mm
XP254 C	381,0	<b>15.0</b>	381,0	<b>15.0</b>	± 3 mm
XP254 C	457,2	<b>18.0</b>	457,2	<b>18.0</b>	± 3 mm
XP254 C	533,4	<b>21.0</b>	533,4	<b>21.0</b>	± 3 mm
XP254 C	609,6	<b>24.0</b>	609,6	<b>24.0</b>	± 3 mm
XP254 C	685,8	<b>27.0</b>	685,8	<b>27.0</b>	± 4 mm
XP254 C	762,0	<b>30.0</b>	762,0	<b>30.0</b>	± 4 mm
XP254 C	838,2	<b>33.0</b>	838,2	<b>33.0</b>	± 4 mm
XP254 C	914,4	<b>36.0</b>	914,4	<b>36.0</b>	± 4 mm
XP254 C	990,6	<b>39.0</b>	990,6	<b>39.0</b>	± 4 mm
XP254 C	1066,8	<b>42.0</b>	1066,8	<b>42.0</b>	± 4 mm
XP254 C	1143,0	<b>45.0</b>	1143,0	<b>45.0</b>	± 4 mm



- Standard belt increments 76,2 mm.
- Non-standard belt increments 15,2 mm.
- Please contact with customer service for precise belt measurements.



# ***XP254 PR%22***

## ***Modular Belt Series***

- **Meat and Poultry Applications**

*General Conveyance and Breeding Lines*

- **Fruit and Vegetable Application**

*Elevators, Steam Peeler, Inspection Tables, Blanching Lines*

- **Seafood Applications**

*Elevators, Inspection Tables, Grading Lines, Trim Lines, Glazing Lines, Cooking Lines*

- **Bakery Applications**

*Row Dough Handling, Cooling Lines, Icing Lines, Packing Lines,  
Metal Detectors*



# XP254 PR%22

Pitch:	25,4 mm / <b>1 inch</b>
Belt Surface:	Open, Smooth Surface
Minimum Width:	76,2 mm / <b>3 inch</b>
Open Area (%):	22%. ( Biggest opening 9,44 x 3 mm )
Flight:	Yes ( T25, T50, T75, T100 )
Sidewall:	Yes ( h=25 mm, h=50 mm, h=75 mm, h=100 mm )
Rod:	Ø4,5 mm / <b>0.177 inch</b> - Self Lock
Approved:	FDA and EU
Curve:	No
Color:	Additional colors available
Cleanability:	Good
Belt Thickness:	8,8 mm / <b>0.346 inch</b>



## Product Features and Functional Benefits

- Unique sprocket engagement - precise indexing, easy cleaning.
- Different openings to optimize performance in cooling and draining applications.
- Extra power, bi-directional belt for long conveyors.
- Unique sprocket engagement reduces pulsation and increases load capacity.
- Chamfered belt edges.

## Available Moulded Module Sizes

- 152,4 mm / **6 inch** module
- 76,2 mm / **3 inch** module

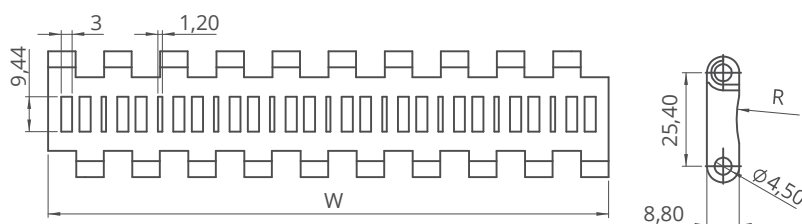
## XP254 PR%22 / Technical Information

BELT MATERIAL	BELT STRENGTH				TEMPERATURE		BELT WEIGHT
	Straight		Curve		°C / °F (min.)	°C / °F (max.)	Kg/m² / lb/ft²
	N/m	lb/ft	N/m	lb/ft			
Polypropylene	18400	1260.80	-	-	+5 / +41	+90 / +194	5,50 / 1.13
Polyethylene	9100	623.55	-	-	-73 / -99.4	+66 / +150.8	5,80 / 1.19
Acetal	32100	2199.55	-	-	-43 / -45.4	+110 / +230	7,90 / 1.62

- Belt strength and temperature values are maximum on the table.

## XP254 PR%22 / Standard Belt Widths

BELT SERIES	WIDTH (W)				Belt With Tolerance (max.)
	PP-PE		POM		
	mm	inch	mm	inch	
XP254 PR22	152,4	<b>6.0</b>	152,4	<b>6.0</b>	± 0,5 mm
XP254 PR22	228,6	<b>9.0</b>	228,6	<b>9.0</b>	± 2 mm
XP254 PR22	304,8	<b>12.0</b>	304,8	<b>12.0</b>	± 2 mm
XP254 PR22	381,0	<b>15.0</b>	381,0	<b>15.0</b>	± 3 mm
XP254 PR22	457,2	<b>18.0</b>	457,2	<b>18.0</b>	± 3 mm
XP254 PR22	533,4	<b>21.0</b>	533,4	<b>21.0</b>	± 3 mm
XP254 PR22	609,6	<b>24.0</b>	609,6	<b>24.0</b>	± 3 mm
XP254 PR22	685,8	<b>27.0</b>	685,8	<b>27.0</b>	± 4 mm
XP254 PR22	762,0	<b>30.0</b>	762,0	<b>30.0</b>	± 4 mm
XP254 PR22	838,2	<b>33.0</b>	838,2	<b>33.0</b>	± 4 mm
XP254 PR22	914,4	<b>36.0</b>	914,4	<b>36.0</b>	± 4 mm
XP254 PR22	990,6	<b>39.0</b>	990,6	<b>39.0</b>	± 4 mm
XP254 PR22	1066,8	<b>42.0</b>	1066,8	<b>42.0</b>	± 4 mm
XP254 PR22	1143,0	<b>45.0</b>	1143,0	<b>45.0</b>	± 4 mm



- Standard belt increments 76,2 mm.
- Non-standard belt increments 15,2 mm.
- Please contact with customer service for precise belt measurements.



# ***XP254 FG***

## ***Modular Belt Series***

- **Seafood Applicaitons**

*Breeding Machines, Draining Lines, Glazing Lines, Elevators, Freezing Lines*

- **Snack Food Applications**

*Proofer Lines, Boiler Infeed, Oven Infeed - Outfeed, Cooling Lines*

- **Fruits and Vegetables Applications**

*Prewashing - Rinsing, Draining, Blanching Lines, Elevators*

- **Packaging Applications**

*Filling, Accumulation Palletizing - Depalletizing, Box Transfer*

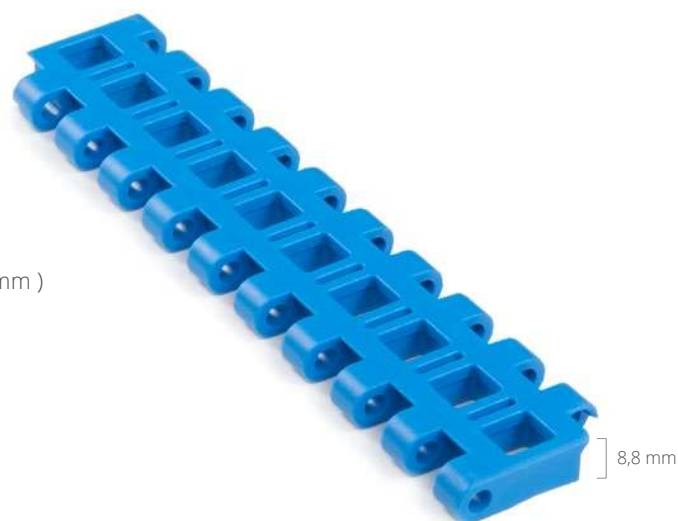
- **Textile Applications**

*Cutter, Dyeing*



# XP254 FG

Pitch:	25,4 mm / <b>1 inch</b>
Belt Surface:	Open, Smooth Surface
Minimum Width:	76,2 mm / <b>3 inch</b>
Open Area (%):	28%. ( Biggest opening 8,44 x 9,44 mm )
Flight:	Yes ( T25, T50, T75, T100 )
Sidewall:	Yes ( h=25 mm, h=50 mm, h=75 mm, h=100 mm )
Rod:	Ø4,5 mm / <b>0.177 inch</b> - Self Lock
Approved:	FDA and EU
Curve:	No
Color:	Additional colors available
Cleanability:	Good
Belt Thickness:	8,8 mm / <b>0.346 inch</b>



## Product Features and Functional Benefits

- Unique sprocket engagement - precise indexing, easy cleaning.
- Different openings to optimize performance in cooling and draining applications.
- Extra power, bi-directional belt for long conveyors.
- Unique sprocket engagement reduces pulsation and increases load capacity.
- Chamfered belt edges.

## Available Moulded Module Sizes

- 152,4 mm / **6 inch** module
- 76,2 mm / **3 inch** module

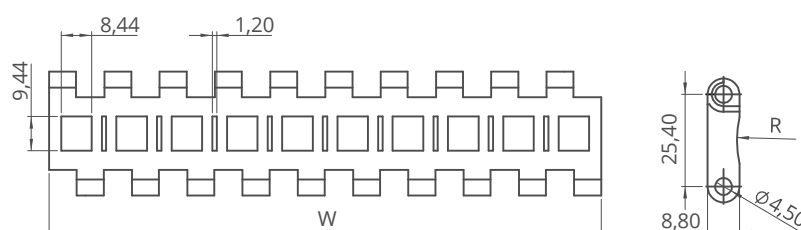
## XP254 FG / Technical Information

BELT MATERIAL	BELT STRENGTH				TEMPERATURE		BELT WEIGHT
	Straight		Curve		°C / °F (min.)	°C / °F (max.)	Kg/m² / lb/ft²
	N/m	lb/ft	N/m	lb/ft			
Polypropylene	18400	1260.80	-	-	+5 / +41	+90 / +194	5,50 / 1.13
Polyethylene	9100	623.55	-	-	-73 / -99.4	+66 / +150.8	5,80 / 1.19
Acetal	32100	2199.55	-	-	-43 / -45.4	+110 / +230	7,90 / 1.62

- Belt strength and temperature values are maximum on the table.

## XP254 FG / Standard Belt Widths

BELT SERIES	WIDTH (W)				Belt With Tolerance (max.)
	PP-PE		POM		
	mm	inch	mm	inch	
XP254 FG	152,4	6.0	152,4	6.0	± 0,5 mm
XP254 FG	228,6	9.0	228,6	9.0	± 2 mm
XP254 FG	304,8	12.0	304,8	12.0	± 2 mm
XP254 FG	381,0	15.0	381,0	15.0	± 3 mm
XP254 FG	457,2	18.0	457,2	18.0	± 3 mm
XP254 FG	533,4	21.0	533,4	21.0	± 3 mm
XP254 FG	609,6	24.0	609,6	24.0	± 3 mm
XP254 FG	685,8	27.0	685,8	27.0	± 4 mm
XP254 FG	762,0	30.0	762,0	30.0	± 4 mm
XP254 FG	838,2	33.0	838,2	33.0	± 4 mm
XP254 FG	914,4	36.0	914,4	36.0	± 4 mm
XP254 FG	990,6	39.0	990,6	39.0	± 4 mm
XP254 FG	1066,8	42.0	1066,8	42.0	± 4 mm
XP254 FG	1143,0	45.0	1143,0	45.0	± 4 mm



- Standard belt increments 76,2 mm.
- Non-standard belt increments 15,2 mm.
- Please contact with customer service for precise belt measurements.



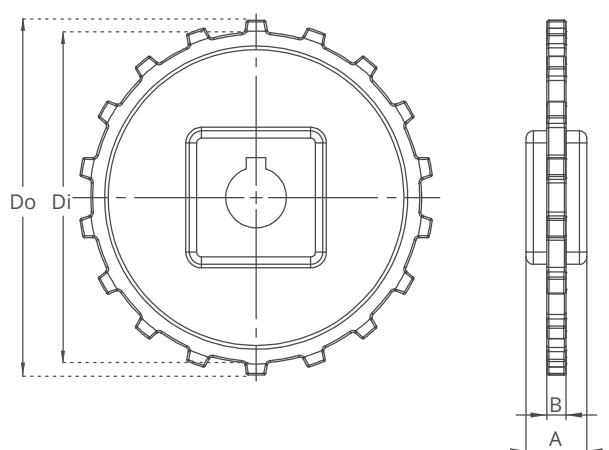
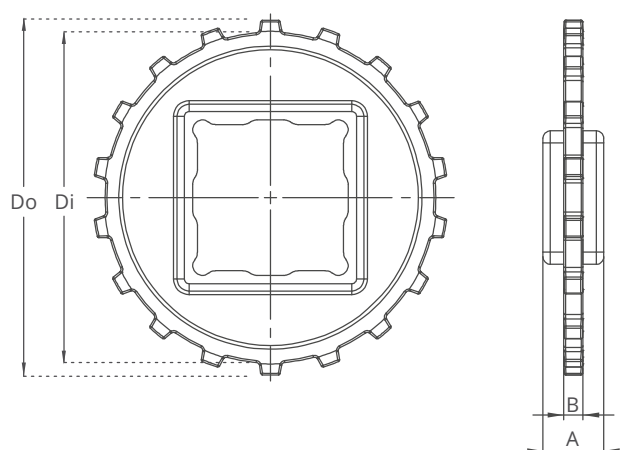
# XP254 Series *Sprockets and Technical Specifications*



Z18



Z18



- Split moulded sprockets are available for XP254 Z15 & Z18!

## XP254 Series / Standard Sprockets Dimensions

NO. TEETH	Di mm/inch	Do mm/inch	B mm/inch	A mm/inch	Square Bore (Q) mm/inch	Round Bore (R) mm/inch	PRODUCT CODE	
							Square Type (Q)	Round Type (R)
Z8	53,2 / <b>2.09</b>	64,0 / <b>2.52</b>	8 / <b>0.31</b>	25 / <b>1</b>	25 / <b>1</b>	25-30 / <b>1-1.25</b>	XP254SQZ8*PA	XP254SRZ8*PA
Z10	71,6 / <b>2.82</b>	82,5 / <b>3.25</b>	8 / <b>0.31</b>	25 / <b>1</b>	40 / <b>1.5</b>	25-30 / <b>1-1.25</b>	XP254SQZ10*PA	XP254SRZ10*PA
Z12	89,0 / <b>3.50</b>	99,5 / <b>3.92</b>	8 / <b>0.31</b>	25 / <b>1</b>	40 / <b>1.5</b>	25-30 / <b>1-1.25</b>	XP254SQZ12*PA	XP254SRZ12*PA
Z15	114,0 / <b>4.49</b>	124,0 / <b>4.88</b>	8 / <b>0.31</b>	25 / <b>1</b>	40-60 / <b>1.5-2.5</b>	25-30 / <b>1-1.25</b>	XP254SQZ15*PA	XP254SRZ15*PA
Z18	136,4 / <b>5.37</b>	146,4 / <b>5.76</b>	8 / <b>0.31</b>	25 / <b>1</b>	40-60 / <b>1.5-2.5</b>	25-30 / <b>1-1.25</b>	XP254SQZ18*PA	XP254SRZ18*PA

\*Other sprockets and hub sizes are manufactured up to request. \*POM (Acetal) and PP (Polypropylene) sprockets raw material is available on request.

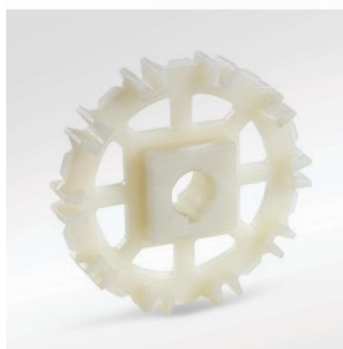
**\*Machined Split Sprockets are available for each size.**



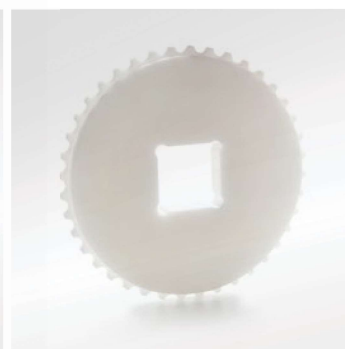
Clamp



Machined Split Sprocket

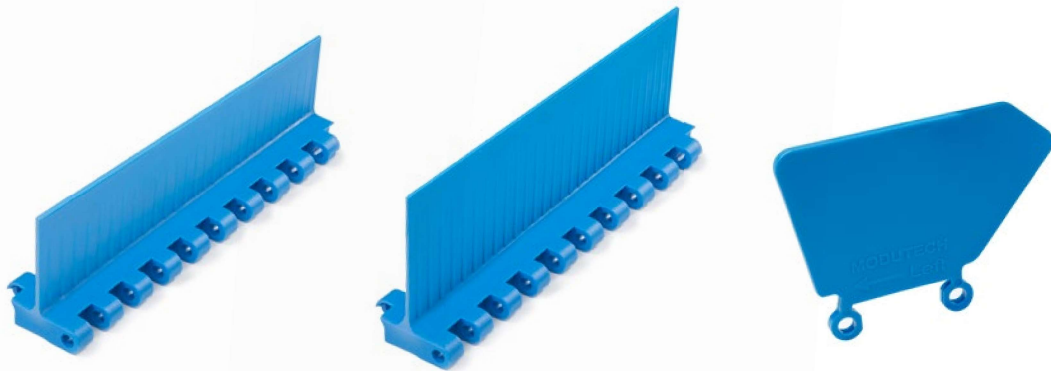


Moulded Sprocket



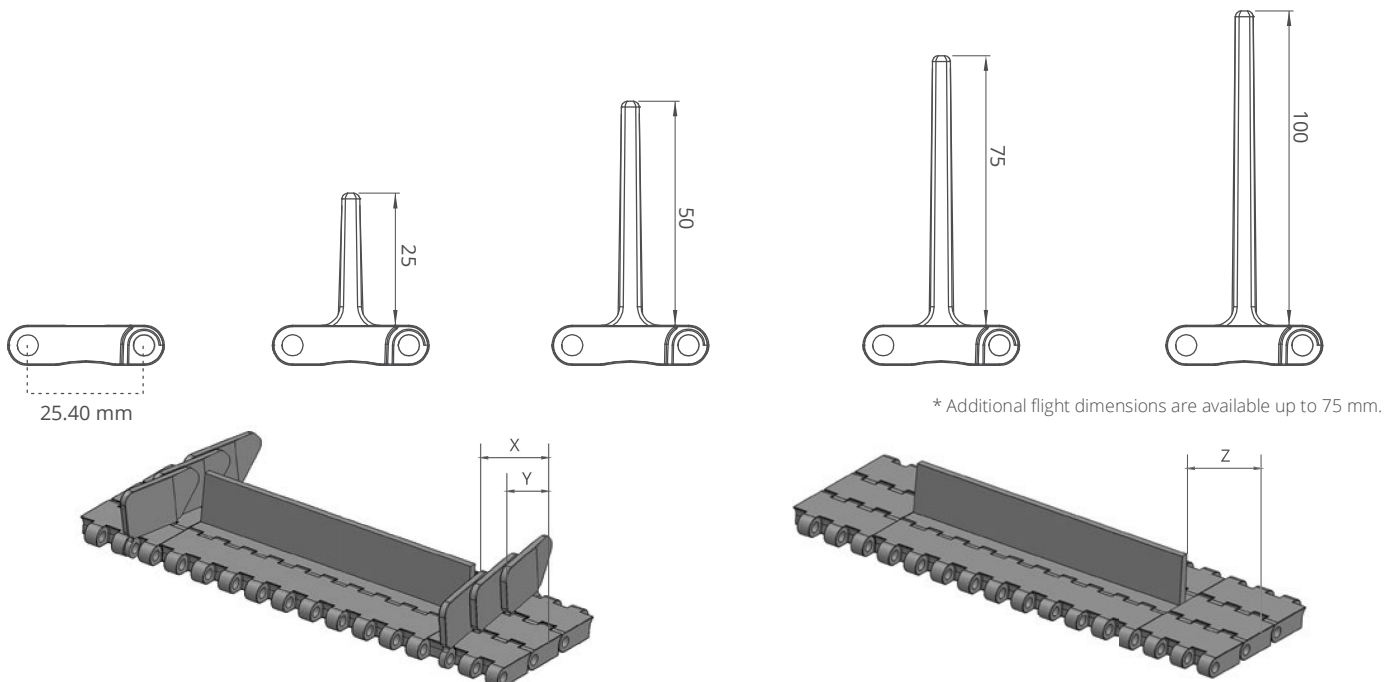
Machined Sprocket

# XP254 Series *Accessories and Technical Specifications*



## XP254 Series / Flight & Sidewall Dimensions

XP254 Series / Flights & Sidewalls				
PRODUCT CODE	Flight Height (mm/ <b>inch</b> )	Flight Width (mm/ <b>inch</b> )	PRODUCT CODE	Sidewall Height (mm/ <b>inch</b> )
XP254T25	25 / <b>1</b>	152,4 / <b>6</b>	XP254SW25	25 / <b>1</b>
XP254T50	50 / <b>2</b>	152,4 / <b>6</b>	XP254SW50	50 / <b>2</b>
XP254T75	75 / <b>3</b>	152,4 / <b>6</b>	XP254SW75	75 / <b>3</b>
XP254T100	100 / <b>4</b>	152,4 / <b>6</b>	XP254SW100	100 / <b>4</b>



## XP254 Series / Sidewall Technical Specifications

Possible Sidewall and Flight Indents	X		Y	
	mm	<b>inch</b>	mm	<b>inch</b>
Standard, module cutting necessary	26,6	<b>1.05</b>	13,1	<b>0.52</b>
Non-standard	38,1	<b>1.50</b>	20,7	<b>0.82</b>
Standard, no module cutting	45,7	<b>1.80</b>	28,4	<b>1.12</b>
Non-standard	53,3	<b>2.10</b>	36,0	<b>1.42</b>
Standard, module cutting necessary	61,0	<b>2.40</b>	43,6	<b>1.72</b>

**Note:** Gap between flight and sidewall minimum 2-3 mm

## XP254 Series / Flight Technical Specifications

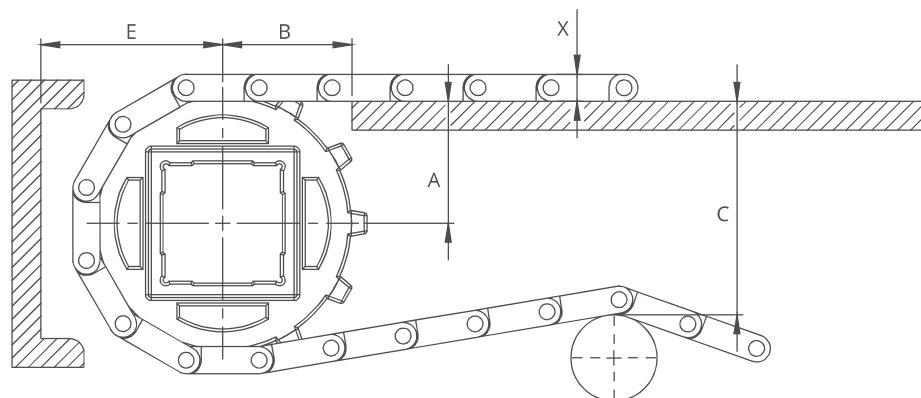
Possible Flight Indents for XP254 Series	Z	
	mm	<b>inch</b>
Standard, module cutting	15,0	<b>0.59</b>
Standard, no module cutting	30,0	<b>1.18</b>
Standard, no module cutting	45,0	<b>1.77</b>
Standard, module cutting	60,0	<b>2.36</b>
Standard, no module cutting	76,0	<b>2.99</b>

\* Non-standard flight indent is on request.



# XP254 Series *Engineering Information*

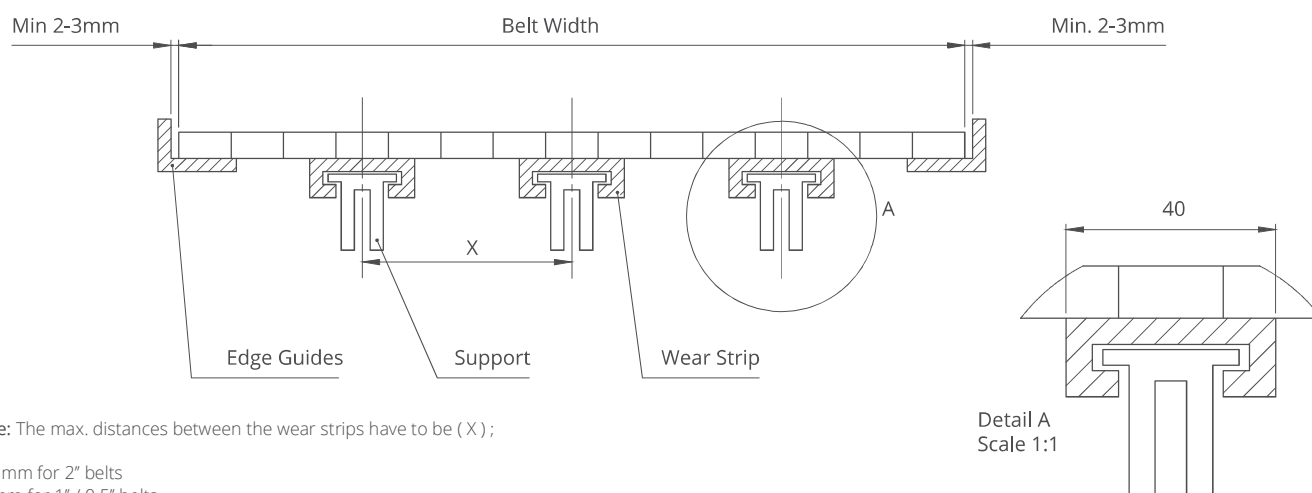
A -  $\pm 0,031"$  ( 1mm )  
 B -  $\pm 0,125"$  ( 3mm )  
 C -  $\pm$  ( Max. )  
 E -  $\pm$  ( Min. )



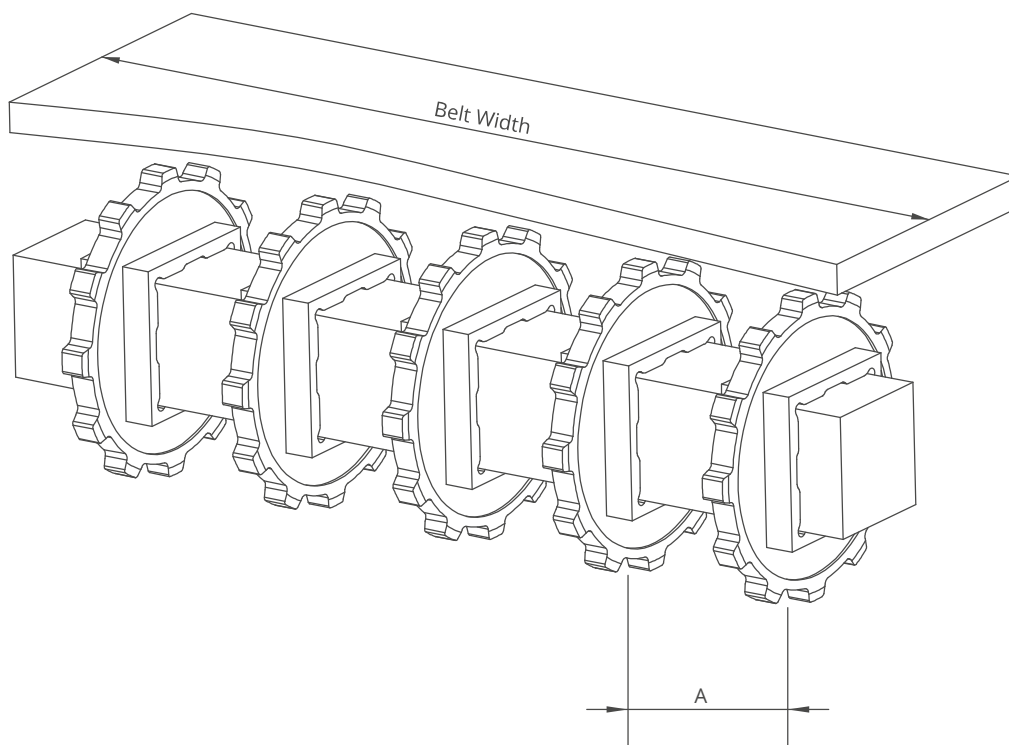
## XP254 Series / Conveyor Frame Dimensions

Sprockets Description			A		B		C		E		X	
Pitch Diameter		No.Teeth	Range (Bottom to Top)		inch	mm	inch	mm	inch	mm	inch	mm
inch	mm		inch	mm								
XP254 FLT CR, XP254 C, XP254 FG, XP254 PR%22												
2.32	59,0	8	1.17	29,8	1.44	36,5	1.94	49,3	1.91	48,6	0.35	8,8
2.99	76,0	10	1.47	37,0	1.69	42,9	2.57	65,4	2.21	56,2	0.35	8,8
3.59	91,2	12	1.79	45,5	1.86	47,3	3.19	81,1	2.53	64,3	0.35	8,8
4.65	118,0	15	2.22	56,3	2.13	54,1	4.15	105,3	2.96	75,1	0.35	8,8
5.67	144,0	18	2.71	69,0	2.31	58,7	5.16	131,0	3.45	87,8	0.35	8,8
XP254 CR												
2.32	59,0	8	1.17	29,8	1.44	36,5	1.94	49,3	1.91	48,6	0.37	9,3
2.99	76,0	10	1.47	37,0	1.69	42,9	2.57	65,4	2.21	56,2	0.37	9,3
3.59	91,2	12	1.79	45,5	1.86	47,3	3.19	81,1	2.53	64,3	0.37	9,3
4.65	118,0	15	2.22	56,3	2.13	54,1	4.15	105,3	2.96	75,1	0.37	9,3
5.67	144,0	18	2.71	69,0	2.31	58,7	5.16	131,0	3.45	87,8	0.37	9,3

## XP254 Series / Slider Support System For Straight Running Belts



# XP254 Series *Engineering Information*



## XP254 Series / Sprockets Arrangement

Standard Belt Width		Number of sprockets per shaft		A (mm/inch)	
mm	inch	Drive Shaft	Return Shaft	Min.	Max.
152,4	<b>6.0</b>	2	2	60/ <b>2.36</b>	170/ <b>6.6</b>
228,6	<b>9.0</b>	2	2	60/ <b>2.36</b>	170/ <b>6.6</b>
304,8	<b>12.0</b>	3	2	60/ <b>2.36</b>	170/ <b>6.6</b>
381,0	<b>15.0</b>	4	3	60/ <b>2.36</b>	170/ <b>6.6</b>
457,2	<b>18.0</b>	5	3	60/ <b>2.36</b>	170/ <b>6.6</b>
533,4	<b>21.0</b>	5	3	60/ <b>2.36</b>	170/ <b>6.6</b>
609,6	<b>24.0</b>	6	3	60/ <b>2.36</b>	170/ <b>6.6</b>
685,8	<b>27.0</b>	6	4	60/ <b>2.36</b>	170/ <b>6.6</b>
762,0	<b>30.0</b>	7	4	60/ <b>2.36</b>	170/ <b>6.6</b>
838,2	<b>33.0</b>	7	4	60/ <b>2.36</b>	170/ <b>6.6</b>
914,4	<b>36.0</b>	8	4	60/ <b>2.36</b>	170/ <b>6.6</b>
990,6	<b>39.0</b>	8	5	60/ <b>2.36</b>	170/ <b>6.6</b>
1066,8	<b>42.0</b>	9	5	60/ <b>2.36</b>	170/ <b>6.6</b>
1143,0	<b>45.0</b>	9	5	60/ <b>2.36</b>	170/ <b>6.6</b>
1219,2	<b>48.0</b>	10	5	60/ <b>2.36</b>	170/ <b>6.6</b>
1295,4	<b>51.0</b>	10	6	60/ <b>2.36</b>	170/ <b>6.6</b>
1371,6	<b>54.0</b>	11	7	60/ <b>2.36</b>	170/ <b>6.6</b>
1447,8	<b>57.0</b>	11	7	60/ <b>2.36</b>	170/ <b>6.6</b>
1524,0	<b>60.0</b>	12	7	60/ <b>2.36</b>	170/ <b>6.6</b>
1600,2	<b>63.0</b>	12	8	60/ <b>2.36</b>	170/ <b>6.6</b>
1676,4	<b>66.0</b>	12	8	60/ <b>2.36</b>	170/ <b>6.6</b>
1752,6	<b>69.0</b>	13	8	60/ <b>2.36</b>	170/ <b>6.6</b>
1828,8	<b>72.0</b>	14	9	60/ <b>2.36</b>	170/ <b>6.6</b>
1905,0	<b>75.0</b>	14	9	60/ <b>2.36</b>	170/ <b>6.6</b>
1981,2	<b>78.0</b>	15	10	60/ <b>2.36</b>	170/ <b>6.6</b>
2057,4	<b>81.0</b>	15	10	60/ <b>2.36</b>	170/ <b>6.6</b>

Note: Number of sprockets depends on the belt load.



# EC254

*Modular Belt Series*

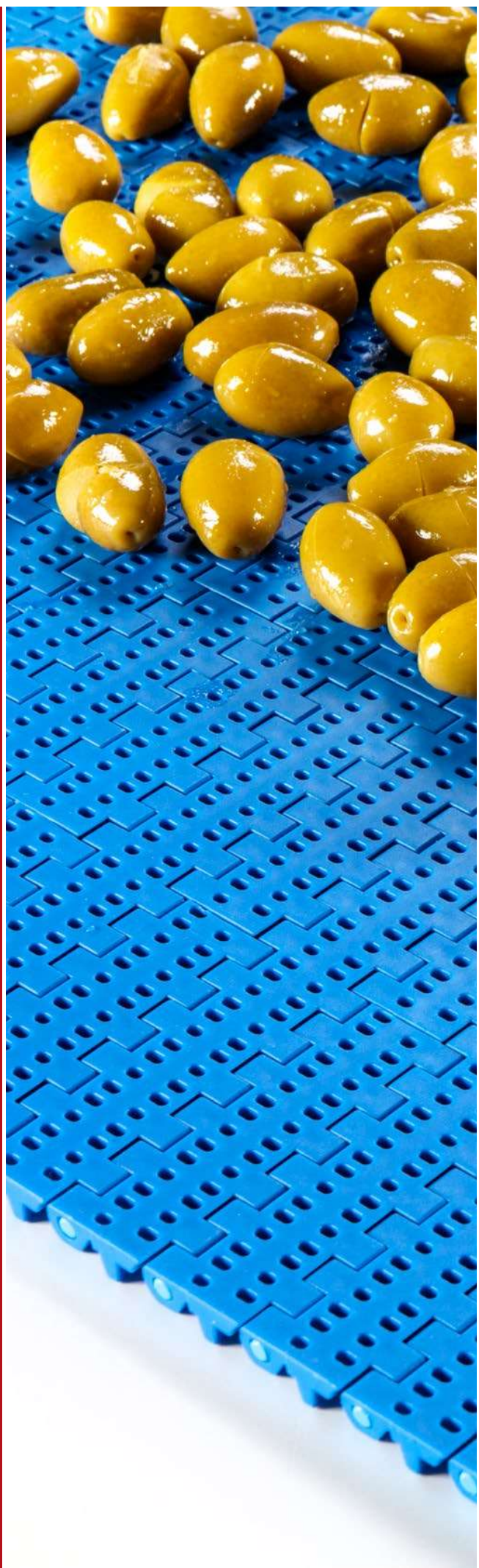
*EC254 C*

*EC254 PR%16*

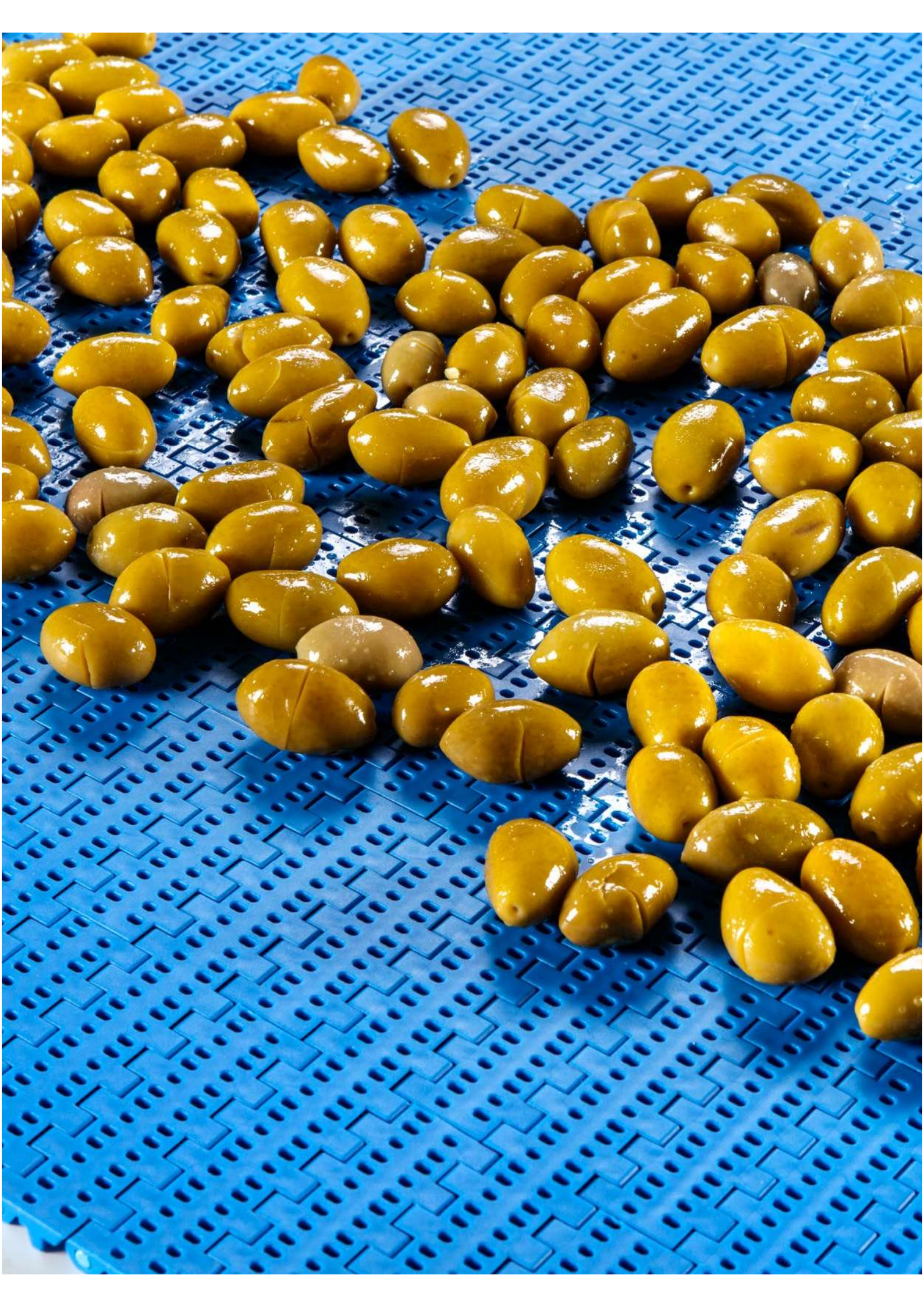
*EC254 NT*

*Sprockets & Accessories*

*Engineering Information*









# **EC254 C**

## **Modular Belt Series**

- **Meat (Beef and Pork) Applications**

*Fat - Trim Lines, General Conveyence, Packing Lines, Elevator*

- **Poultry Applications**

*Debonning, Trim Lines, Offal - Feather Lines, Grading Lines, Freezing Lines, Elevator*

- **Seafood Applications**

*Inspection Tables, Grading Lines, Trim Lines*

- **Bakery Applications**

*Row Dough Handling, Cooling Lines, Packing Lines*

- **Snack Food Applications**

*Corn Processing*

- **Fruits and Vegetables Applications**

*Bulk Feeding, Elevator, Control - Sorting Table*

- **Packaging Applications**

*Labelling, Palletizing - Depalletizing*

# EC254 C

Pitch:	25,4 mm / <b>1 inch</b>
Belt Surface:	Close, Smooth Surface
Minimum Width:	152,4 mm / <b>6 inch</b>
Open Area (%):	0%
Flight:	Yes ( T25, T50, T75, TC75, TCH75, T100, TNC50, TNC100 )
Sidewall:	Yes ( h=25 mm, h=50 mm, h=75 mm, h=100 mm )
Rod:	Ø5 mm / <b>0.197 inch</b> - Self Lock
Approved:	FDA and EU
Curve:	No
Color:	Additional colors available
Cleanability:	Excellent
Belt Thickness:	10 mm / <b>0.394 inch</b>



## Product Features and Functional Benefits

- Easy to clean reduces downtime for cleaning time 70%.
- Unique sprocket engagement - higher product load and longer conveyors.
- Close transfer applications.
- Reduces bacteria growth.

## Available Moulded Module Sizes

- 152,4 mm / **6 inch** module
- 76,2 mm / **3 inch** module
- 45 mm / **1.77 inch** module
- 30 mm / **1.18 inch** module

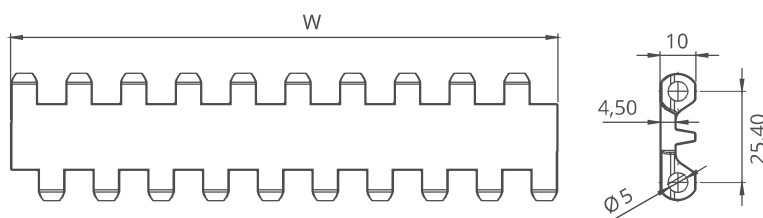
## EC254 C / Technical Information

BELT MATERIAL	BELT STRENGTH				TEMPERATURE		BELT WEIGHT
	Straight		Curve		°C / °F (min.)	°C / °F (max.)	Kg/m² / lb/ft²
	N/m	lb/ft	N/m	lb/ft			
Polypropylene	15400	<b>1055</b>	-	-	+5 / <b>+41</b>	+90 / <b>+194</b>	4,9 / <b>1.00</b>
Polyethylene	9240	<b>603</b>	-	-	-73 / <b>-99.4</b>	+66 / <b>+150.8</b>	5,2 / <b>1.05</b>
Acetal	25150	<b>1723</b>	-	-	-43 / <b>-45.4</b>	+110 / <b>+230</b>	7,3 / <b>1.49</b>

- Belt strength and temperature values are maximum on the table.

## EC254 C / Standard Belt Widths

BELT SERIES	WIDTH (W)				Belt With Tolerance (max.)
	PP-PE		POM		
	mm	inch	mm	inch	
EC254 C	152,4	6.0	152,4	6.0	± 0,5 mm
EC254 C	228,6	9.0	228,6	9.0	± 2 mm
EC254 C	304,8	12.0	304,8	12.0	± 2 mm
EC254 C	381,0	15.0	381,0	15.0	± 3 mm
EC254 C	457,2	18.0	457,2	18.0	± 3 mm
EC254 C	533,4	21.0	533,4	21.0	± 3 mm
EC254 C	609,6	24.0	609,6	24.0	± 3 mm
EC254 C	685,8	27.0	685,8	27.0	± 4 mm
EC254 C	762,0	30.0	762,0	30.0	± 4 mm
EC254 C	838,2	33.0	838,2	33.0	± 4 mm
EC254 C	914,4	36.0	914,4	36.0	± 4 mm
EC254 C	990,6	39.0	990,6	39.0	± 4 mm
EC254 C	1066,8	42.0	1066,8	42.0	± 4 mm
EC254 C	1143,0	45.0	1143,0	45.0	± 4 mm



- Standard belt increments 76,2 mm.
- Non-standard belt increments 15,2 mm.
- Please contact with customer service for precise belt measurements.



# ***EC254 PR%16***

## ***Modular Belt Series***

- **Meat and Poultry Applications**

*General Conveyance and Breeding Lines*

- **Fruit and Vegetable Applications**

*Including Elevators, Steam Peeler, Inspection Tables*

- **Seafood Applications**

*Including Elevators, Inspection Tables, Grading Lines,*

*Trim Lines, Glazing Lines, Cooking Lines*

- **Bakery Applications**

*Including Raw Dough Handling, Cooling Lines,*

*Icing Lines, Packing Lines, Metal Detectors*

# EC254 PR%16

Pitch:	25,4 mm / <b>1 inch</b>
Belt Surface:	Open, Smooth Surface
Minimum Width:	152,4 mm / <b>6 inch</b>
Open Area (%):	16%. ( Biggest opening 2,5 x 4,5 mm )
Flight:	Yes ( T25, T50, T75, TC75, TCH75, T100, TNC50, TNC100 )
Sidewall:	Yes ( h=25 mm, h=50 mm, h=75 mm, h=100 mm )
Rod:	Ø5 mm / <b>0.197 inch</b> - Self Lock
Approved:	FDA and EU
Curve:	No
Color:	Additional colors available
Cleanability:	Excellent
Belt Thickness:	10 mm / <b>0.394 inch</b>



## Product Features and Functional Benefits

- Unique sprocket engagement - precise indexing, easy cleaning.
- Different openings to optimize performance in cooling and draining applications.
- Easy to clean reduces downtime for cleaning time 70%.
- Reduces bacteria growth.

## Available Moulded Module Sizes

- 152,4 mm / **6 inch** module
- 76,2 mm / **3 inch** module
- 45 mm / **1.77 inch** module
- 30 mm / **1.18 inch** module

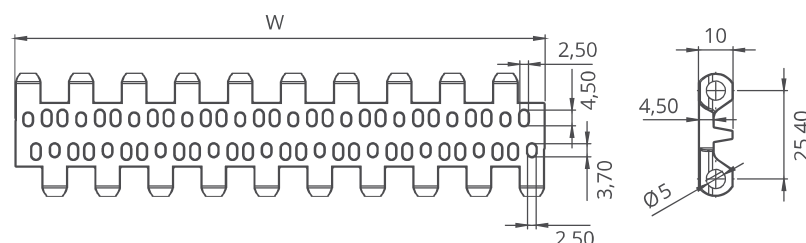
## EC254 PR%16 / Technical Information

BELT MATERIAL	BELT STRENGTH				TEMPERATURE		BELT WEIGHT
	Straight		Curve		°C / °F (min.)	°C / °F (max.)	Kg/m² / lb/ft²
	N/m	lb/ft	N/m	lb/ft			
Polypropylene	12100	<b>828</b>	-	-	+5 / <b>+41</b>	+90 / <b>+194</b>	4,5 / <b>0.92</b>
Polyethylene	7700	<b>527</b>	-	-	-73 / <b>-99.4</b>	+66 / <b>+150.8</b>	4,7 / <b>0.96</b>
Acetal	19800	<b>1356</b>	-	-	-43 / <b>-45.4</b>	+110 / <b>+230</b>	6,5 / <b>1.33</b>

- Belt strength and temperature values are maximum on the table.

## EC254 PR%16 / Standard Belt Widths

BELT SERIES	WIDTH (W)				Belt With Tolerance (max.)
	PP-PE		POM		
	mm	inch	mm	inch	
EC254 PR16	152,4	<b>6.0</b>	152,4	<b>6.0</b>	± 0,5 mm
EC254 PR16	228,6	<b>9.0</b>	228,6	<b>9.0</b>	± 2 mm
EC254 PR16	304,8	<b>12.0</b>	304,8	<b>12.0</b>	± 2 mm
EC254 PR16	381,0	<b>15.0</b>	381,0	<b>15.0</b>	± 3 mm
EC254 PR16	457,2	<b>18.0</b>	457,2	<b>18.0</b>	± 3 mm
EC254 PR16	533,4	<b>21.0</b>	533,4	<b>21.0</b>	± 3 mm
EC254 PR16	609,6	<b>24.0</b>	609,6	<b>24.0</b>	± 3 mm
EC254 PR16	685,8	<b>27.0</b>	685,8	<b>27.0</b>	± 4 mm
EC254 PR16	762,0	<b>30.0</b>	762,0	<b>30.0</b>	± 4 mm
EC254 PR16	838,2	<b>33.0</b>	838,2	<b>33.0</b>	± 4 mm
EC254 PR16	914,4	<b>36.0</b>	914,4	<b>36.0</b>	± 4 mm
EC254 PR16	990,6	<b>39.0</b>	990,6	<b>39.0</b>	± 4 mm
EC254 PR16	1066,8	<b>42.0</b>	1066,8	<b>42.0</b>	± 4 mm
EC254 PR16	1143,0	<b>45.0</b>	1143,0	<b>45.0</b>	± 4 mm



- Standard belt increments 76,2 mm.
- Non standard belt increments 15,2 mm.
- Please contact with customer service for precise belt measurements.





# ***EC254 NT***

## ***Modular Belt Series***

- ***Meat (Beef and Pork) Applications***

*Elevator*

- ***Poultry Applications***

*Elevator, Freezing Lines*

- ***Seafood Applications***

*Control Tables, Glazing*

- ***Fruits and Vegetables***

*Including Elevator*

# EC254 NT

Pitch:	25,4 mm / <b>1 inch</b>
Belt Surface:	Close, Nub Top Surface
Minimum Width:	152,4 mm / <b>6 inch</b>
Open Area (%):	0%
Flight:	Yes ( T25, T50, T75, TC75, TCH75, T100, TNC50, TNC100 )
Sidewall:	Yes ( h=25 mm, h=50 mm, h=75 mm, h=100 mm )
Rod:	Ø5 mm / <b>0.197 inch</b> - Self Lock
Approved:	FDA and EU
Curve:	No
Color:	Additional colors available
Cleanability:	Excellent
Belt Thickness:	12 mm / <b>0.472 inch</b>



## Product Features and Functional Benefits

- Easy to clean reduces downtime for cleaning time 70%.
- Reduces bacteria growth.
- Non-adhesive due to reduced contact surface.
- Close transfer applications.

## Available Moulded Module Sizes

- 152,4 mm / **6 inch** module
- 152,4 mm / **6 inch** edge module with 45 mm indent

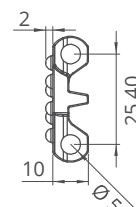
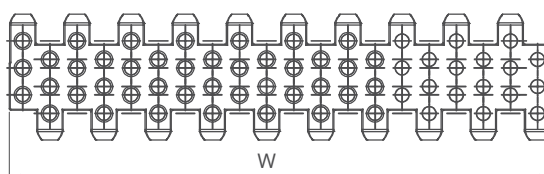
## EC254 NT / Technical Information

BELT MATERIAL	BELT STRENGTH				TEMPERATURE		BELT WEIGHT
	Straight		Curve		°C / °F (min.)	°C / °F (max.)	Kg/m² / lb/ft²
	N/m	lb/ft	N/m	lb/ft			
Polypropylene	15400	<b>1055</b>	-	-	+5 / <b>+41</b>	+90 / <b>+194</b>	5,1 / <b>1.05</b>
Polyethylene	8800	<b>603</b>	-	-	-73 / <b>-99.4</b>	+66 / <b>+150.8</b>	5,4 / <b>1.11</b>
Acetal	25150	<b>1723</b>	-	-	-43 / <b>-45.4</b>	+110 / <b>+230</b>	7,7 / <b>1.57</b>

- Belt strength and temperature values are maximum on the table.

## EC254 NT / Standard Belt Widths

BELT SERIES	WIDTH (W)				Belt With Tolerance (max.)
	PP-PE		POM		
	mm	inch	mm	inch	
EC254 NT	152,4	6.0	152,4	6.0	± 0,5 mm
EC254 NT	228,6	9.0	228,6	9.0	± 2 mm
EC254 NT	304,8	12.0	304,8	12.0	± 2 mm
EC254 NT	381,0	15.0	381,0	15.0	± 3 mm
EC254 NT	457,2	18.0	457,2	18.0	± 3 mm
EC254 NT	533,4	21.0	533,4	21.0	± 3 mm
EC254 NT	609,6	24.0	609,6	24.0	± 3 mm
EC254 NT	685,8	27.0	685,8	27.0	± 4 mm
EC254 NT	762,0	30.0	762,0	30.0	± 4 mm
EC254 NT	838,2	33.0	838,2	33.0	± 4 mm
EC254 NT	914,4	36.0	914,4	36.0	± 4 mm
EC254 NT	990,6	39.0	990,6	39.0	± 4 mm
EC254 NT	1066,8	42.0	1066,8	42.0	± 4 mm
EC254 NT	1143,0	45.0	1143,0	45.0	± 4 mm



- Standard belt increments 76,2 mm.
- Non-standard belt increments 15,2 mm.
- Please contact with customer service for precise belt measurements.



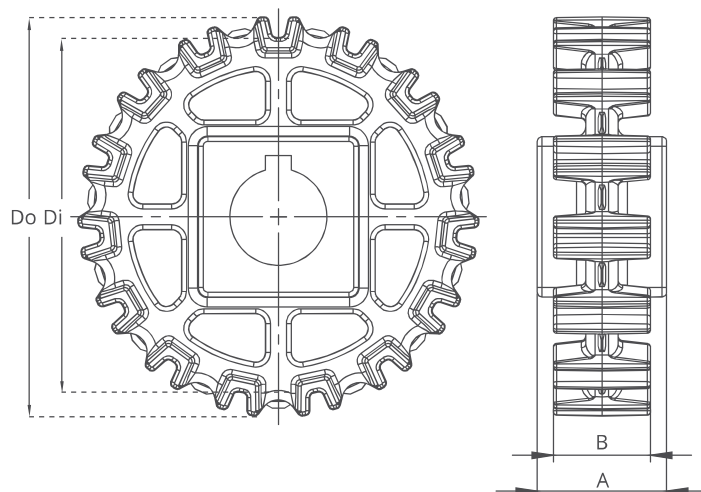
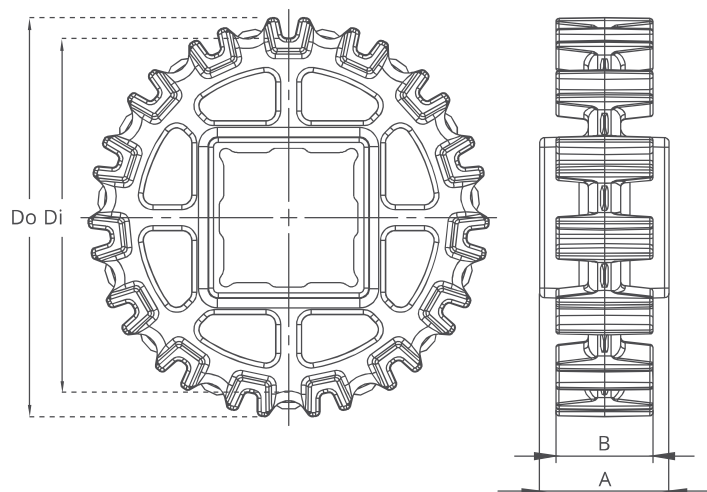
# EC254 Series Sprockets and Technical Specifications



Z15



Z15



## EC254 Series / Standard Sprockets Dimensions

NO. TEETH	Di mm/inch	Do mm/inch	B mm/inch	A mm/inch	Square Bore (Q) mm/inch	Round Bore (R) mm/inch	PRODUCT CODE	
							Square Type (Q)	Round Type (R)
Z8	51,6 / <b>2.03</b>	64,6 / <b>2.54</b>	30 / <b>1.18</b>	40 / <b>1.57</b>	25 / <b>1</b>	25 / <b>1</b>	EC254SQZ8*POM	EC254SRZ8*POM
Z10	68,8 / <b>2.71</b>	81,8 / <b>3.22</b>	30 / <b>1.18</b>	40 / <b>1.57</b>	40 / <b>1.5</b>	25-30 / <b>1-1.25</b>	EC254SQZ10*POM	EC254SRZ10*POM
Z12	85,5 / <b>3.37</b>	98,8 / <b>3.89</b>	30 / <b>1.18</b>	40 / <b>1.57</b>	40 / <b>1.5</b>	25-30 / <b>1-1.25</b>	EC254SQZ12*POM	EC254SRZ12*POM
Z15	111,1 / <b>4.37</b>	124,1 / <b>4.89</b>	30 / <b>1.18</b>	40 / <b>1.57</b>	40 / <b>1.5</b>	25-30 / <b>1-1.25</b>	EC254SQZ15*POM	EC254SRZ15*POM
Z18	136,1 / <b>5.36</b>	149,1 / <b>5.87</b>	30 / <b>1.18</b>	40 / <b>1.57</b>	40 / <b>1.5</b>	25-30 / <b>1-1.25</b>	EC254SQZ18*POM	EC254SRZ18*POM

\*Other sprockets and hub sizes are manufactured up to request. \*PA (Polyamide) and PP (Polypropylene) sprockets raw material is available on request.

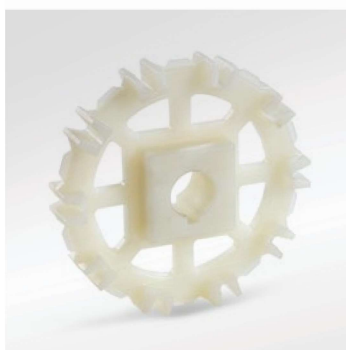
**\*Machined Split Sprockets are available for each size.**



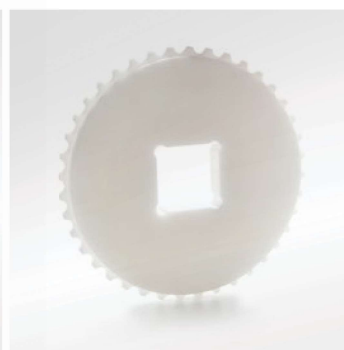
Clamp



Machined Split Sprocket

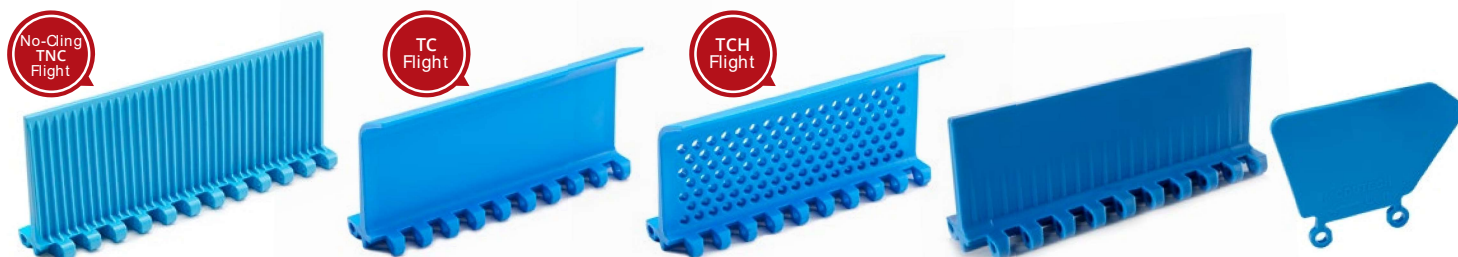


Moulded Sprocket



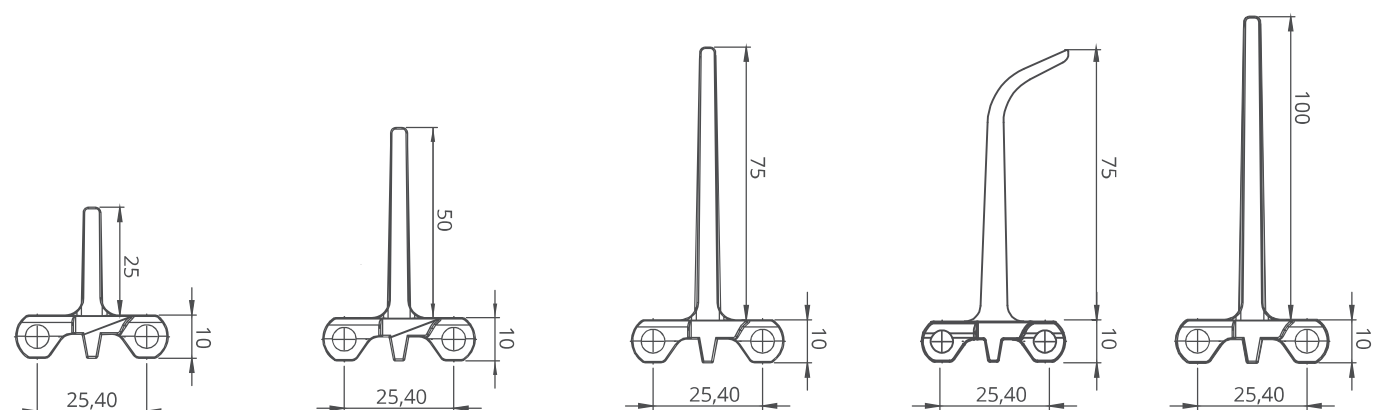
Machined Sprocket

# EC254 Series Accessories and Technical Specifications

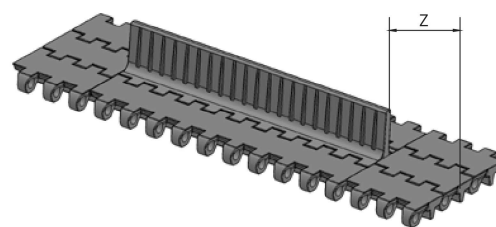
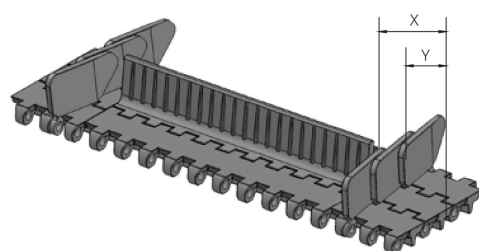


## EC254 Series / Flight & Sidewall Dimensions

EC254 Series / Flights & Sidewalls				
PRODUCT CODE	Flight Height (mm/ <b>inch</b> )	Flight Width (mm/ <b>inch</b> )	PRODUCT CODE	Sidewall Height (mm/ <b>inch</b> )
EC254T25	25 / <b>1</b>	152,4 / <b>6</b>	EC254SW25	25 / <b>1</b>
EC254T50	50 / <b>2</b>	152,4 / <b>6</b>	EC254SW50	50 / <b>2</b>
EC254T75	75 / <b>3</b>	152,4 / <b>6</b>	EC254SW75	75 / <b>3</b>
EC254T100	100 / <b>4</b>	152,4 / <b>6</b>	EC254SW100	100 / <b>4</b>
EC254TC75	75 / <b>3</b>	152,4 / <b>6</b>	-	-
EC254TCH75	75 / <b>3</b>	152,4 / <b>6</b>	-	-
EC254TNC50	50 / <b>2</b>	152,4 / <b>6</b>	-	-
EC254TNC100	100 / <b>4</b>	152,4 / <b>6</b>	-	-



\* Additional flight dimensions are available up to 100 mm.



## EC254 Series / Sidewall Technical Specifications

Possible Sidewall and Flight Indents	X		Y	
	mm	<b>inch</b>	mm	<b>inch</b>
Standard, module cutting necessary	26,6	<b>1.05</b>	13,1	<b>0.52</b>
Non-standard	38,1	<b>1.50</b>	20,7	<b>0.82</b>
Standard, no module cutting	45,7	<b>1.80</b>	28,4	<b>1.12</b>
Non-standard	53,3	<b>2.10</b>	36,0	<b>1.42</b>
Standard, module cutting necessary	61,0	<b>2.40</b>	43,6	<b>1.72</b>

## EC254 Series / Flight Technical Specifications

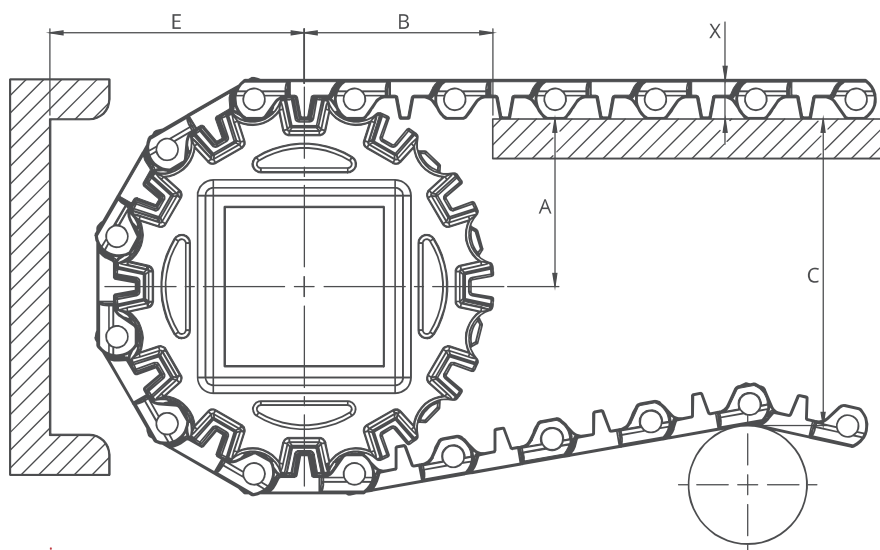
Possible Flight Indents for EC254 Series	Z	
	mm	<b>inch</b>
Standard, module cutting	15,0	<b>0.59</b>
Standard, no module cutting	30,0	<b>1.18</b>
Standard, no module cutting	45,0	<b>1.77</b>
Standard, module cutting	60,0	<b>2.36</b>
Standard, no module cutting	76,0	<b>2.99</b>

**Note:** Gap between flight and sidewall minimum 2-3 mm  
 Gap between flight and sidewall maximum 10 mm

\* Non-standard flight indent is on request.



# EC254 Series *Engineering Information*

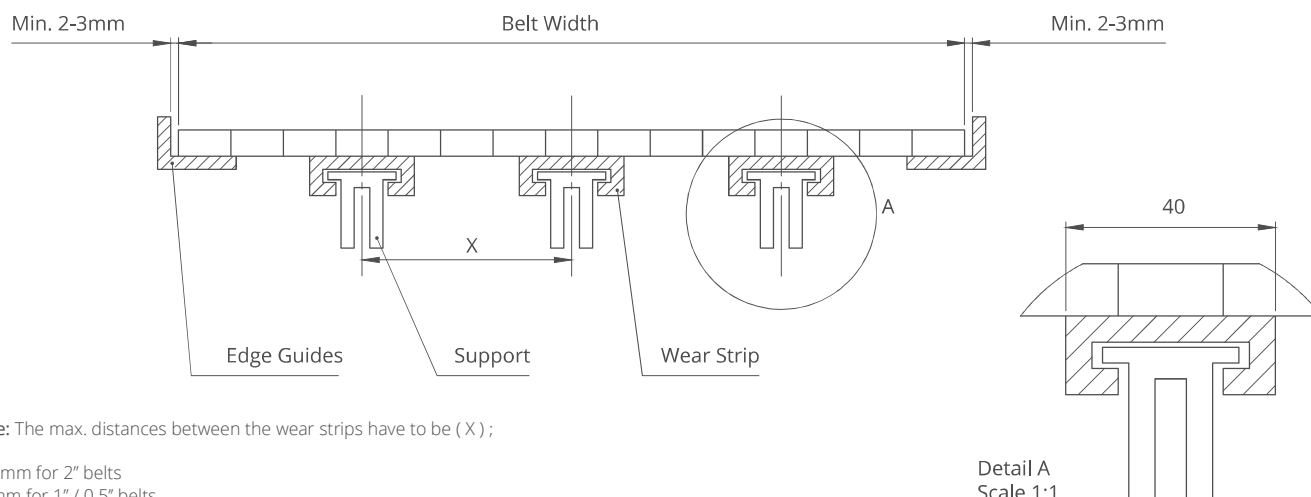


A -  $\pm 0,031"$  ( 1mm )      C -  $\pm$  ( Max. )  
 B -  $\pm 0,125"$  ( 3mm )      E -  $\pm$  ( Min. )

## EC254 Series / Conveyor Frame Dimensions

Sprockets Description			A		B		C		E		X	
Pitch Diameter		No.Teeth	Range (Bottom to Top)		inch	mm	inch	mm	inch	mm	inch	mm
inch	mm		inch	mm								
EC254 C, EC254 PR%16												
2.30	58,5	8	1.16	29,4	1.48	37,6	1.92	48,7	1.94	49,4	0.39	10,0
2.97	75,5	10	1.48	37,5	1.69	42,9	2.57	65,3	2.26	57,5	0.39	10,0
3.63	92,3	12	1.80	45,8	1.87	47,4	3.23	82,0	2.59	65,8	0.39	10,0
4.65	118,0	15	2.23	56,7	2.16	54,9	4.16	105,7	3.02	76,7	0.39	10,0
5.63	143,0	18	2.75	70,0	2.35	59,7	5.18	131,5	3.54	90,0	0.39	10,0
EC254 NT												
2.30	58,5	8	1.08	27,4	1.52	38,6	1.84	46,7	1.94	49,4	0.47	12,0
2.97	75,5	10	1.40	35,5	1.74	44,1	2.49	63,3	2.26	57,5	0.47	12,0
3.63	92,3	12	1.74	44,1	1.92	48,7	3.16	80,3	2.60	66,1	0.47	12,0
4.65	118,0	15	2.20	55,9	2.19	55,5	4.13	109,0	3.07	77,9	0.47	12,0
5.63	143,0	18	2.70	68,6	2.40	61,0	4.20	120,0	2.95	91,0	0.47	12,0

## EC254 Series / Slider Support System For Straight Running Belts

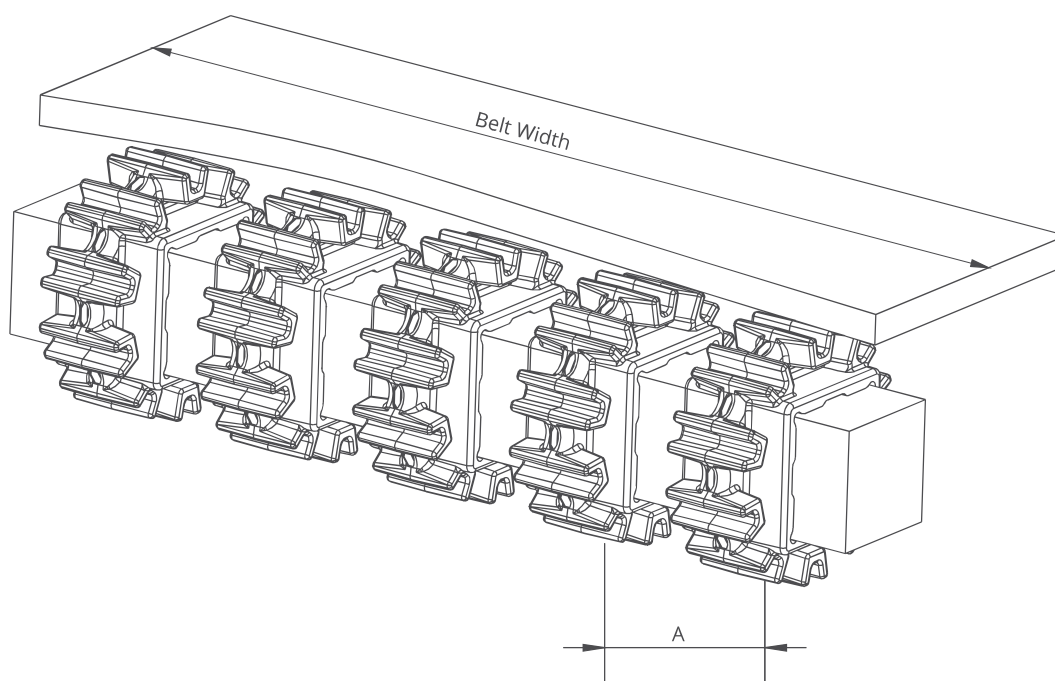


Note: The max. distances between the wear strips have to be ( X );

125 mm for 2" belts  
 80 mm for 1" / 0.5" belts

Detail A  
 Scale 1:1

# EC254 Series *Engineering Information*



## EC254 Series / Sprockets Arrangement

Standard Belt Width		Number of sprockets per shaft		A (mm/inch)	
mm	inch	Drive Shaft	Return Shaft	Min.	Max.
152,4	6.0	2	2	60/2.36	170/6.6
228,6	9.0	2	2	60/2.36	170/6.6
304,8	12.0	3	2	60/2.36	170/6.6
381,0	15.0	4	3	60/2.36	170/6.6
457,2	18.0	5	3	60/2.36	170/6.6
533,4	21.0	5	3	60/2.36	170/6.6
609,6	24.0	6	3	60/2.36	170/6.6
685,8	27.0	6	4	60/2.36	170/6.6
762,0	30.0	7	4	60/2.36	170/6.6
838,2	33.0	7	4	60/2.36	170/6.6
914,4	36.0	8	4	60/2.36	170/6.6
990,6	39.0	8	5	60/2.36	170/6.6
1066,8	42.0	9	5	60/2.36	170/6.6
1143,0	45.0	9	5	60/2.36	170/6.6
1219,2	48.0	10	5	60/2.36	170/6.6
1295,4	51.0	10	6	60/2.36	170/6.6
1371,6	54.0	11	7	60/2.36	170/6.6
1447,8	57.0	11	7	60/2.36	170/6.6
1524,0	60.0	12	7	60/2.36	170/6.6
1600,2	63.0	12	8	60/2.36	170/6.6
1676,4	66.0	12	8	60/2.36	170/6.6
1752,6	69.0	13	8	60/2.36	170/6.6
1828,8	72.0	14	9	60/2.36	170/6.6
1905,0	75.0	14	9	60/2.36	170/6.6
1981,2	78.0	15	10	60/2.36	170/6.6
2057,4	81.0	15	10	60/2.36	170/6.6

Note: Number of sprockets depends on the belt load.



# MD254

*Modular Belt Series*

*MD254 FG*

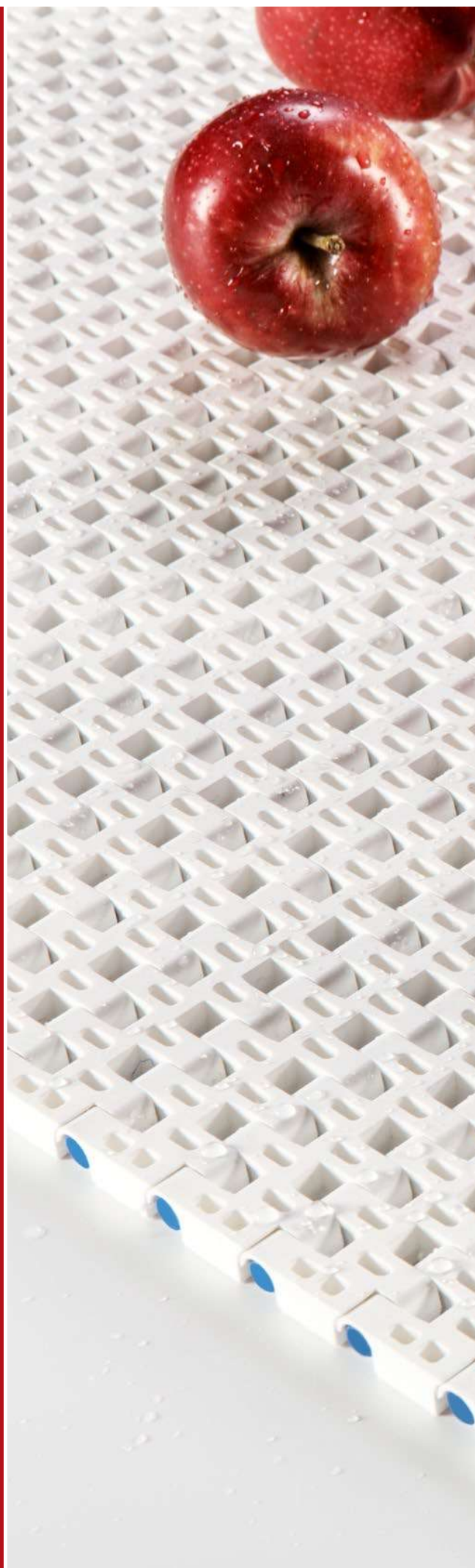
*MD254 C*

*MD254 GT / Friction Top*

*MD254 RR*

*Sprockets & Accessories*

*Engineering Information*









# MD254 FG

## Modular Belt Series

- **Bakery Applications**

Oven Infeed - Outfeed, Cooling Lines, Coating Lines, Glazing Lines,  
Freezing Lines, Conditioning Lines

- **Poultry Applications**

Skinning, Breeding Machines and Grading Lines

- **Seafood Applications**

Breeding Machines, Draining Lines, Glazing Lines, Elevators, Freezing Lines

- **Snack Food Applications**

Puffer Lines, Boiler Infeed, Oven Infeed - Outfeed, Cooling Lines

- **Fruits and Vegetables Applications**

Prewashing - Rinsing, Draining, Blanching Lines, Elevators

- **Packaging Applications**

Filling, Accumulation Palletizing - Depalletizing, Box Transfer

- **Textile Applications**

Cutter, Dyeing

# MD254 FG

Pitch:	25,4 mm / <b>1 inch</b>
Belt Surface:	Open, Smooth Surface
Minimum Width:	50 mm / <b>1.97 inch</b>
Open Area (%):	33%. ( Biggest opening 5,5 x 7 mm )
Flight:	Yes (T25, T50, TC50, TCH50, TNC75, TNC100, T75, T100)
Sidewall:	Yes (h=25mm, h=50mm, h=75mm, h=100mm)
Rod:	Ø 5 mm / <b>0.197 inch</b> - Self Lock
Approved:	FDA and EU
Curve:	No
Color:	Additional colors available
Cleanability:	Good
Belt Thickness:	10 mm / <b>0.394 inch</b>



## Product Features and Functional Benefits

- Belt provides optimal open area for drainage and airflow.
- Less friction and product contact for easy cooking, cooling and freezing of products.
- Reduced dirt and oxide build due to self cleaning surface.
- Bi-directional belt for long conveyors.
- Stainless steel pins option for high temperature applications.
- Easy to clean reduces downtime for cleaning time 70%.
- Stainless steel pins option reduce belt elongation for high temperature application.

## Available Moulded Module Sizes

- 200 mm / **7.87 inch** module
- 100 mm / **3.94 inch** module
- 50 mm / **1.97 inch** module
- 33 mm / **1.30 inch** module

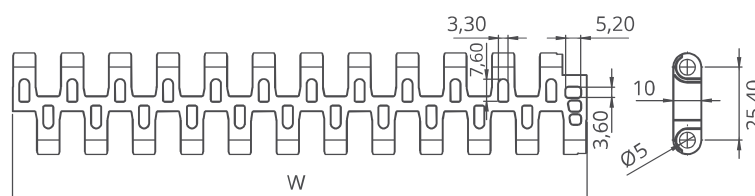
## MD254 FG / Technical Information

BELT MATERIAL	BELT STRENGTH				TEMPERATURE		BELT WEIGHT
	Straight		Curve		°C / °F (min.)	°C / °F (max.)	Kg/m <sup>2</sup> / lb/ft <sup>2</sup>
	N/m	lb/ft	N/m	lb/ft			
Polypropylene	15400	<b>1055</b>	-	-	+5 / <b>+41</b>	+90 / <b>+194</b>	4,6 / <b>0.94</b>
Polyethylene	8800	<b>603</b>	-	-	-73 / <b>-99.4</b>	+66 / <b>+150.8</b>	5,1 / <b>1.04</b>
Acetal	27170	<b>1861</b>	-	-	-43 / <b>-45.4</b>	+110 / <b>+230</b>	7,1 / <b>1.45</b>

- Belt strength and temperature values are maximum on the table.

## MD254 FG / Standard Belt Widths

BELT SERIES	WIDTH (W)				Belt With Tolerance (max.)
	PP-PE		POM		
	mm	inch	mm	inch	
MD254 FG	200,0	7.87	200,0	7.87	± 1 mm
MD254 FG	250,0	9.84	250,0	9.84	± 1 mm
MD254 FG	300,0	11.81	300,0	11.81	± 2 mm
MD254 FG	350,0	13.77	350,0	13.77	± 2 mm
MD254 FG	400,0	15.75	400,0	15.75	± 2 mm
MD254 FG	450,0	17.71	450,0	17.71	± 2 mm
MD254 FG	500,0	19.69	500,0	19.69	± 2 mm
MD254 FG	550,0	21.65	550,0	21.65	± 3 mm
MD254 FG	600,0	23.62	600,0	23.62	± 3 mm
MD254 FG	650,0	25.60	650,0	25.60	± 3 mm
MD254 FG	700,0	27.56	700,0	27.56	± 3 mm
MD254 FG	750,0	29.50	750,0	29.50	± 3 mm
MD254 FG	800,0	31.50	800,0	31.50	± 3 mm
MD254 FG	850,0	33.46	850,0	33.46	± 4 mm
MD254 FG	900,0	35.43	900,0	35.43	± 4 mm



- Standard belt increments 50 mm.
- Non-standard belt increments 16,6 mm.
- Please contact with customer service for precise belt measurements.



# MD254 C

## Modular Belt Series

- **Meat (Beef and Pork) Applications**

*Fat - Trim Lines, General Conveyence, Packing Lines, Elevator*

- **Poultry Applications**

*Debonning, Trim Lines, Offal - Feather Lines, Grading Lines, Freezing Lines, Elevator*

- **Seafood Applications**

*Inspection Tables, Grading Lines, Trim Lines*

- **Bakery Applications**

*Row Dough Handling, Cooling Lines, Packing Lines*

- **Snack Food Applications**

*Corn Processing*

- **Fruits and Vegetables Applications**

*Bulk Feeding, Elevator, Control - Sorting Table*

- **Automotive Applications**

*Car Part Manufacturing*

- **Tire Manufacturing Applications**

*Mixer Infeed - Outfeed, Calendering Infeed, Extrusion Outfeed*

- **Packaging Applications**

*Labelling, Case Packers, Tray Packers, Palletizing - Depalletizing*

- **Corrugated Cardbord Applications**

*Down Stracker, Corrugator Take Off, Strap Feed*

- **Printing and Paper Applications**

*Printing Machine Outfeed, Wrapping Machine Outfeed*

- **Beverages and Botteling Applications**

*Can Palletizing and Depalletizing, Glass Palletizing and Depalletizing, Pet Palletizing and Depalletizing*

- **Material Handling Applications**

*Incline Applications, Palletizers, Packaging Lines*

# MD254 C

Pitch:	25,4 mm / <b>1 inch</b>
Belt Surface:	Close, Smooth Surface
Minimum Width:	50 mm / <b>1.97 inch</b>
Open Area (%):	0%
Flight:	Yes (T25, T50, TC50, TCH50, TNC75, TNC100, T75, T100)
Sidewall:	Yes (h=25mm, h=50mm, h=75mm, h=100mm)
Rod:	Ø 5 mm / <b>0.197 inch</b> - Self Lock
Approved:	FDA and EU
Curve:	No
Color:	Additional colors available
Cleanability:	Good
Belt Thickness:	10 mm / <b>0.394 inch</b>



## Product Features and Functional Benefits

- Easy to clean reduces downtime for cleaning time 70%.
- Unique sprocket engagement - higher product load and longer conveyors.
- Close transfer applications.
- Reduces bacteria growth.
- Bi-directional belt for long conveyors.

## Available Moulded Module Sizes

- 200 mm / **7.87 inch** module
- 100 mm / **3.94 inch** module
- 50 mm / **1.97 inch** module
- 33 mm / **1.30 inch** module

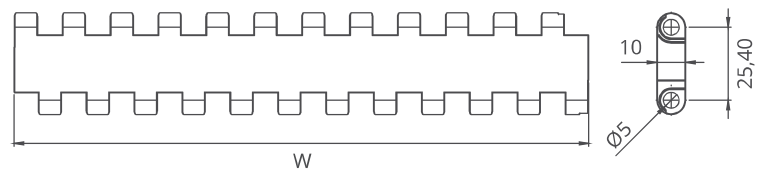
## MD254 C / Technical Information

BELT MATERIAL	BELT STRENGTH				TEMPERATURE		BELT WEIGHT
	Straight		Curve		°C / °F (min.)	°C / °F (max.)	Kg/m² / lb/ft²
	N/m	lb/ft	N/m	lb/ft			
Polypropylene	19800	<b>1356</b>	-	-	+5 / <b>+41</b>	+90 / <b>+194</b>	5,5 / <b>1.13</b>
Polyethylene	9900	<b>678</b>	-	-	-73 / <b>-99.4</b>	+66 / <b>+150.8</b>	5,8 / <b>1.19</b>
Acetal	35200	<b>2411</b>	-	-	-43 / <b>-45.4</b>	+110 / <b>+230</b>	8,4 / <b>1.71</b>

- Belt strength and temperature values are maximum on the table.

## MD254 C / Standard Belt Widths

BELT SERIES	WIDTH (W)				Belt With Tolerance (max.)
	PP-PE		POM		
	mm	inch	mm	inch	
MD254 C	200,0	7.87	200,0	7.87	± 1 mm
MD254 C	250,0	9.84	250,0	9.84	± 1 mm
MD254 C	300,0	11.81	300,0	11.81	± 2 mm
MD254 C	350,0	13.77	350,0	13.77	± 2 mm
MD254 C	400,0	15.75	400,0	15.75	± 2 mm
MD254 C	450,0	17.71	450,0	17.71	± 2 mm
MD254 C	500,0	19.69	500,0	19.69	± 2 mm
MD254 C	550,0	21.65	550,0	21.65	± 3 mm
MD254 C	600,0	23.62	600,0	23.62	± 3 mm
MD254 C	650,0	25.60	650,0	25.60	± 3 mm
MD254 C	700,0	27.56	700,0	27.56	± 3 mm
MD254 C	750,0	29.50	750,0	29.50	± 3 mm
MD254 C	800,0	31.50	800,0	31.50	± 3 mm
MD254 C	850,0	33.46	850,0	33.46	± 4 mm
MD254 C	900,0	35.43	900,0	35.43	± 4 mm



- Standard belt increments 50 mm.
- Non-standard belt increments 16,6 mm.
- Please contact with customer service for precise belt measurements.



# **MD254 GT**

## **Modular Belt Series**

- **Snack Food Applications**

*Incline - Decline Lines, Container Conveyance*

- **Packaging Applications**

*Box Incline - Decline Lines*

- **Beverage Applications**

*Incline - Decline Lines, Filling, Box Transfer*

# MD254 GT

Pitch:	25,4 mm / <b>1 inch</b>
Belt Surface:	Close, Friction Surface
Minimum Width:	50 mm / <b>1.97 inch</b>
Open Area (%):	0%
Flight:	Yes (T25, T50, TC50, TCH50, TNC75, TNC100, T75, T100)
Sidewall:	Yes (h=25mm, h=50mm, h=75mm, h=100mm)
Rod:	Ø 5 mm / <b>0.197 inch</b> - Self Lock
Approved:	FDA and EU
Curve:	No
Color:	Additional colors available
Cleanability:	Good
Belt Thickness:	14 mm / <b>0.551 inch</b>



## Product Features and Functional Benefits

- Unique rubber top eliminates wear and increases friction in incline-decline applications.
- Bi-directional belt for long conveyors.

## Available Moulded Module Sizes

- 200 mm / **7.87 inch** module
- 100 mm / **3.94 inch** module
- 100 mm / **3.94 inch** edge module with 50 mm indent

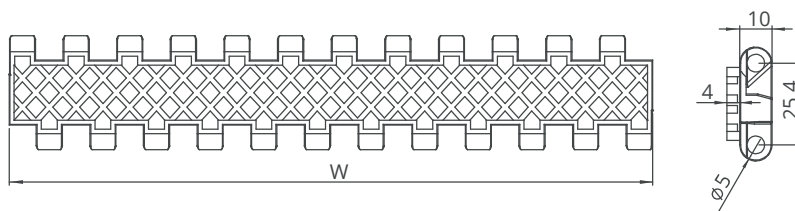
## MD254 GT / Technical Information

BELT MATERIAL	BELT STRENGTH				TEMPERATURE		BELT WEIGHT
	Straight		Curve		°C / °F (min.)	°C / °F (max.)	Kg/m² / lb/ft²
	N/m	lb/ft	N/m	lb/ft			
Polypropylene	19800	<b>1356</b>	-	-	+5 / <b>+41</b>	+90 / <b>+194</b>	8,7 / <b>1.74</b>
Polyethylene	-	-	-	-	-	-	-
Acetal	-	-	-	-	-	-	-

- Belt strength and temperature values are maximum on the table.

## MD254 GT / Standard Belt Widths

BELT SERIES	WIDTH (W)				Belt With Tolerance (max.)
	PP		POM		
	mm	inch	mm	inch	
MD254 GT	200,0	7.87	-	-	± 1 mm
MD254 GT	250,0	9.84	-	-	± 1 mm
MD254 GT	300,0	11.81	-	-	± 2 mm
MD254 GT	350,0	13.77	-	-	± 2 mm
MD254 GT	400,0	15.75	-	-	± 2 mm
MD254 GT	450,0	17.71	-	-	± 2 mm
MD254 GT	500,0	19.69	-	-	± 2 mm
MD254 GT	550,0	21.65	-	-	± 3 mm
MD254 GT	600,0	23.62	-	-	± 3 mm
MD254 GT	650,0	25.60	-	-	± 3 mm
MD254 GT	700,0	27.56	-	-	± 3 mm
MD254 GT	750,0	29.50	-	-	± 3 mm
MD254 GT	800,0	31.50	-	-	± 3 mm
MD254 GT	850,0	33.46	-	-	± 4 mm
MD254 GT	900,0	35.43	-	-	± 4 mm



- Standard belt increments 50 mm.
- Non-standard belt increments 16,6 mm.
- Please contact with customer service for precise belt measurements.



# MD254 RR

## Modular Belt Series

- **Fruits and Vegetables Applications**

*Palletizing / Depalletizing, Sterilization Conveyance*

- **Automotive Applications**

*Battery Filling*

- **Tire Manufacturing Applications**

*Dip Tank*

- **Packaging Applications**

*Accumulation, Palletizing / Depalletizing*

- **Beverages and Bottling Applications**

*Glass Palletizing / Depalletizing, Pasteurizers / Warmers, Accumulation Tables*

- **Pasta Applications**

*Blanchers, Pasteurizers, Cooling Lines*

- **Meat Applications**

*Microwaves, Cooling and Freezing Lines*

# MD254 RR

Pitch:	25,4 mm / <b>1 inch</b>
Belt Surface:	Open, Raised Rib Surface
Minimum Width:	50 mm / <b>1.97 inch</b>
Open Area (%):	33%. ( Biggest opening 5,5 x 7 mm )
Flight:	No
Sidewall:	No
Rod:	Ø 5 mm / <b>0.197 inch</b> - Self Lock
Approved:	FDA and EU
Curve:	No
Color:	Additional colors available
Cleanability:	Good
Belt Thickness:	16 mm / <b>0.630 inch</b>



## Product Features and Functional Benefits

- Less friction and product contact for easy cooking , cooling and freezing of products.
- Reduces back line pressure with up to 70%.
- Reduced dirt and oxide build up due to self cleaning surface.
- Finger plate for trouble free transfer.
- Bi-directional belt for long conveyors.

## Available Moulded Module Sizes

- 200 mm / **7.87 inch** module
- 100 mm / **3.94 inch** module
- 50 mm / **1.97 inch** module
- 33 mm / **1.30 inch** module

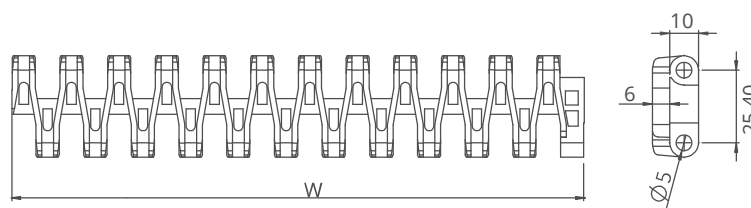
## MD254 RR / Technical Information

BELT MATERIAL	BELT STRENGTH				TEMPERATURE		BELT WEIGHT
	Straight		Curve		°C / °F (min.)	°C / °F (max.)	Kg/m² / lb/ft²
	N/m	lb/ft	N/m	lb/ft			
Polypropylene	17600	<b>1206</b>	-	-	+5 / <b>+41</b>	+90 / <b>+194</b>	6,8 / <b>1.40</b>
PPHomopolymer	17600	<b>1206</b>	-	-	+5 / <b>+41</b>	+118 / <b>+245</b>	6,8 / <b>1.40</b>
Acetal	29700	<b>2035</b>	-	-	-43 / <b>-45.4</b>	+110 / <b>+230</b>	10,4 / <b>2.13</b>

- Belt strength and temperature values are maximum on the table.

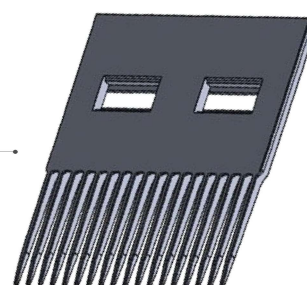
## MD254 RR / Standard Belt Widths

BELT SERIES	WIDTH (W)				Belt With Tolerance (max.)
	PP-PPH		POM		
	mm	inch	mm	inch	
MD254 RR	200,0	<b>7.87</b>	200,0	<b>7.87</b>	± 1 mm
MD254 RR	250,0	<b>9.84</b>	250,0	<b>9.84</b>	± 1 mm
MD254 RR	300,0	<b>11.81</b>	300,0	<b>11.81</b>	± 2 mm
MD254 RR	350,0	<b>13.77</b>	350,0	<b>13.77</b>	± 2 mm
MD254 RR	400,0	<b>15.75</b>	400,0	<b>15.75</b>	± 2 mm
MD254 RR	450,0	<b>17.71</b>	450,0	<b>17.71</b>	± 2 mm
MD254 RR	500,0	<b>19.69</b>	500,0	<b>19.69</b>	± 2 mm
MD254 RR	550,0	<b>21.65</b>	550,0	<b>21.65</b>	± 3 mm
MD254 RR	600,0	<b>23.62</b>	600,0	<b>23.62</b>	± 3 mm
MD254 RR	650,0	<b>25.60</b>	650,0	<b>25.60</b>	± 3 mm
MD254 RR	700,0	<b>27.56</b>	700,0	<b>27.56</b>	± 3 mm
MD254 RR	750,0	<b>29.50</b>	750,0	<b>29.50</b>	± 3 mm
MD254 RR	800,0	<b>31.50</b>	800,0	<b>31.50</b>	± 3 mm
MD254 RR	850,0	<b>33.46</b>	850,0	<b>33.46</b>	± 4 mm
MD254 RR	900,0	<b>35.43</b>	900,0	<b>35.43</b>	± 4 mm



MD254 RR Comb / Finger Plate is available

This product is used for transferring of cans, bottles, etc.



- Standard belt increments 50 mm.
- Non-standard belt increments 16,6 mm.
- Please contact with customer service for precise belt measurements.



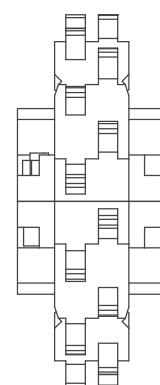
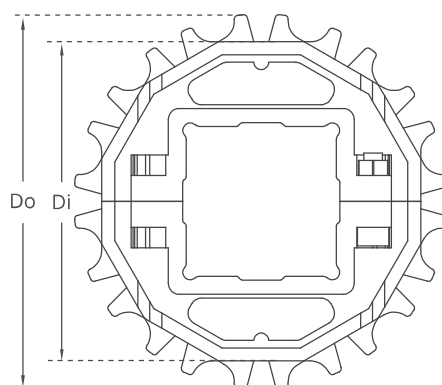
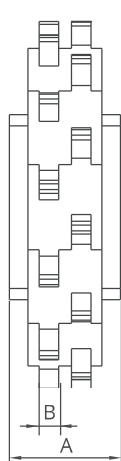
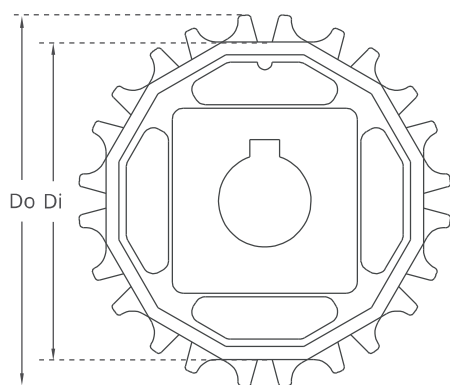
# MD254 Series Sprockets and Technical Specifications



Z15



Z28



Split moulded sprockets are available.

## MD254 Series / Standard Sprockets Dimensions

NO. TEETH	Di mm/inch	Do mm/inch	B mm/inch	A mm/inch	Square Bore (Q) mm/inch	Round Bore (R) mm/inch	PRODUCT CODE	
							Square Type (Q)	Round Type (R)
Z8	52,0 / <b>2.05</b>	67,0 / <b>2.64</b>	6 / <b>0.24</b>	30 / <b>1.18</b>	25 / <b>1</b>	25 / <b>1</b>	MD-TR254SQ25Z8*POM	MD-TR254SRZ8*POM
Z10	69,0 / <b>2.72</b>	84,0 / <b>3.31</b>	6 / <b>0.24</b>	30 / <b>1.18</b>	40 / <b>1.5</b>	25-30 / <b>1-1.25</b>	MD-TR254SQZ10*POM	MD-TR254SRZ10*POM
Z12	85,8 / <b>3.38</b>	100,8 / <b>3.97</b>	6 / <b>0.24</b>	30 / <b>1.18</b>	40 / <b>1.5</b>	25-30 / <b>1-1.25</b>	MD-TR254SQZ12*POM	MD-TR254SRZ12*POM
Z15	110,8 / <b>4.36</b>	125,8 / <b>4.95</b>	6 / <b>0.24</b>	30 / <b>1.18</b>	40 / <b>1.5</b>	25-30 / <b>1-1.25</b>	MD-TR254SQZ15*POM	MD-TR254SRZ15*POM
Z16	119,1 / <b>4.69</b>	134,1 / <b>5.28</b>	6 / <b>0.24</b>	30 / <b>1.18</b>	40 / <b>1.5</b>	25-30 / <b>1-1.25</b>	MD-TR254SQZ16*POM	MD-TR254SRZ16*POM
Z18	135,6 / <b>5.34</b>	150,6 / <b>5.93</b>	6 / <b>0.24</b>	30 / <b>1.18</b>	40 / <b>1.5</b>	25-30 / <b>1-1.25</b>	MD-TR254SQZ18*POM	MD-TR254SRZ18*POM
Z20	150,7 / <b>5.93</b>	167,3 / <b>6.59</b>	6 / <b>0.24</b>	30 / <b>1.18</b>	40 / <b>1.5</b>	25-30 / <b>1-1.25</b>	MD-TR254SQZ20*POM	MD-TR254SRZ20*POM

\*Other sprockets and hub sizes are manufactured up to request. \*PA (Polyamide) and PP (Polypropylene) sprockets raw material is available on request.

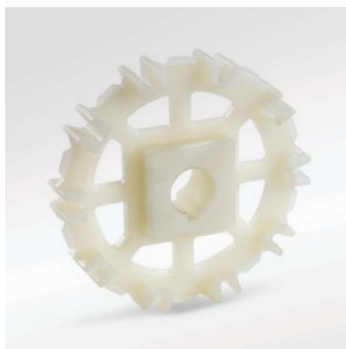
**\*Machined Split Sprockets are available for each size.**



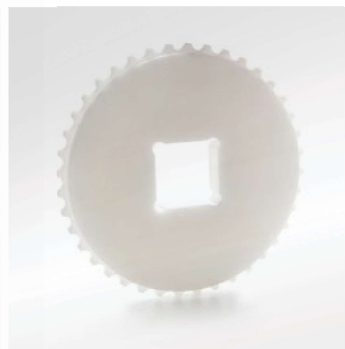
Clamp



Machined Split Sprocket

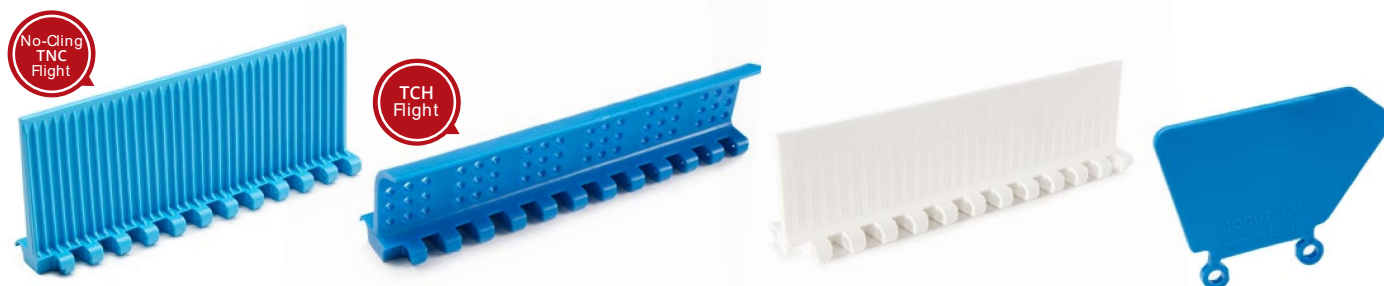


Moulded Sprocket



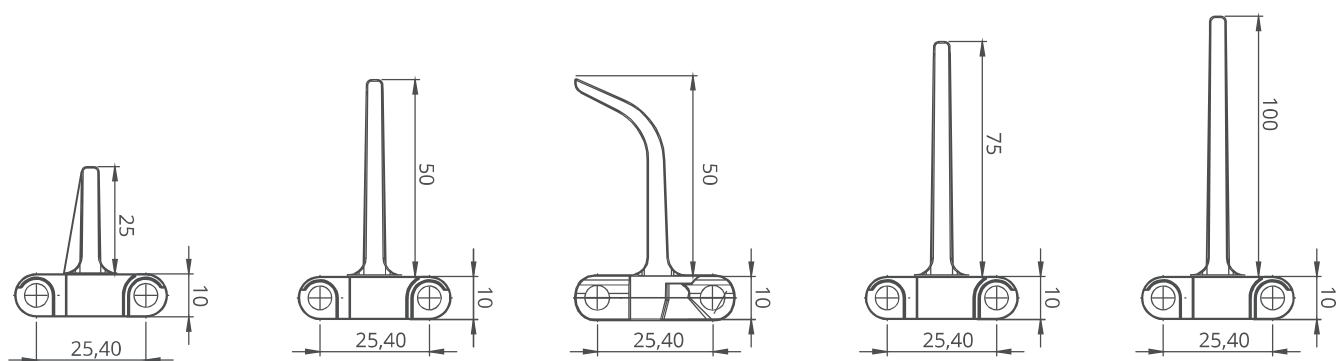
Machined Sprocket

# MD254 Series *Accessories and Technical Specifications*

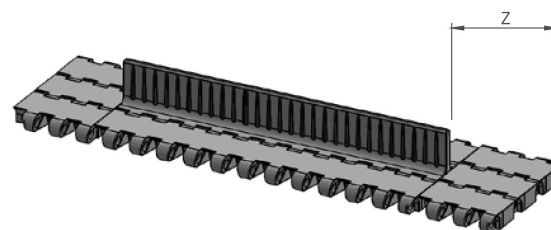
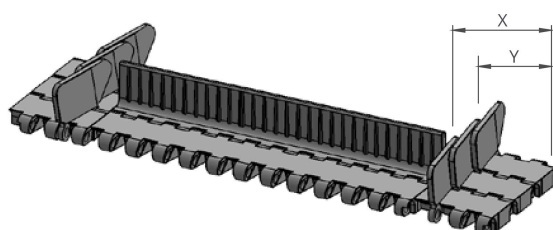


## MD254 Series / Flight & Sidewall Dimensions

MD254 Series / Flights & Sidewalls				
PRODUCT CODE	Flight Height (mm/inch)	Flight Width (mm/inch)	PRODUCT CODE	Sidewall Height (mm/inch)
MD254T25	25 / <b>1</b>	200 / <b>7.87</b>	MD254SW25	25 / <b>1</b>
MD254T50	50 / <b>2</b>	200 / <b>7.87</b>	MD254SW50	50 / <b>2</b>
MD254T75	75 / <b>3</b>	200 / <b>7.87</b>	MD254SW75	75 / <b>3</b>
MD254T100	100 / <b>4</b>	200 / <b>7.87</b>	MD254SW100	100 / <b>4</b>
MD254TC50	50 / <b>2</b>	200 / <b>7.87</b>	-	-
MD254TCH50	50 / <b>2</b>	200 / <b>7.87</b>	-	-
MD254TNC75	75 / <b>3</b>	200 / <b>7.87</b>	-	-
MD254TNC100	100 / <b>4</b>	200 / <b>7.87</b>	-	-



\* Additional flight dimensions are available up to 100 mm.



## MD254 Series / Sidewall Technical Specifications

Possible Sidewall and Flight Indents	X		Y	
	mm	inch	mm	inch
Standard, no module cutting	33,5	<b>1.32</b>	14,9	<b>0.59</b>
Non-Standard	41,9	<b>1.65</b>	23,3	<b>0.92</b>
Standard, no module cutting	50,0	<b>1.97</b>	31,6	<b>1.24</b>
Non-Standard	58,6	<b>2.31</b>	39,9	<b>1.57</b>
Standard, module cutting necessary	66,9	<b>2.63</b>	48,5	<b>1.91</b>
Non-Standard	75,2	<b>2.96</b>	56,8	<b>2.24</b>

**Note:** Gap between flight and sidewall minimum 2-3 mm

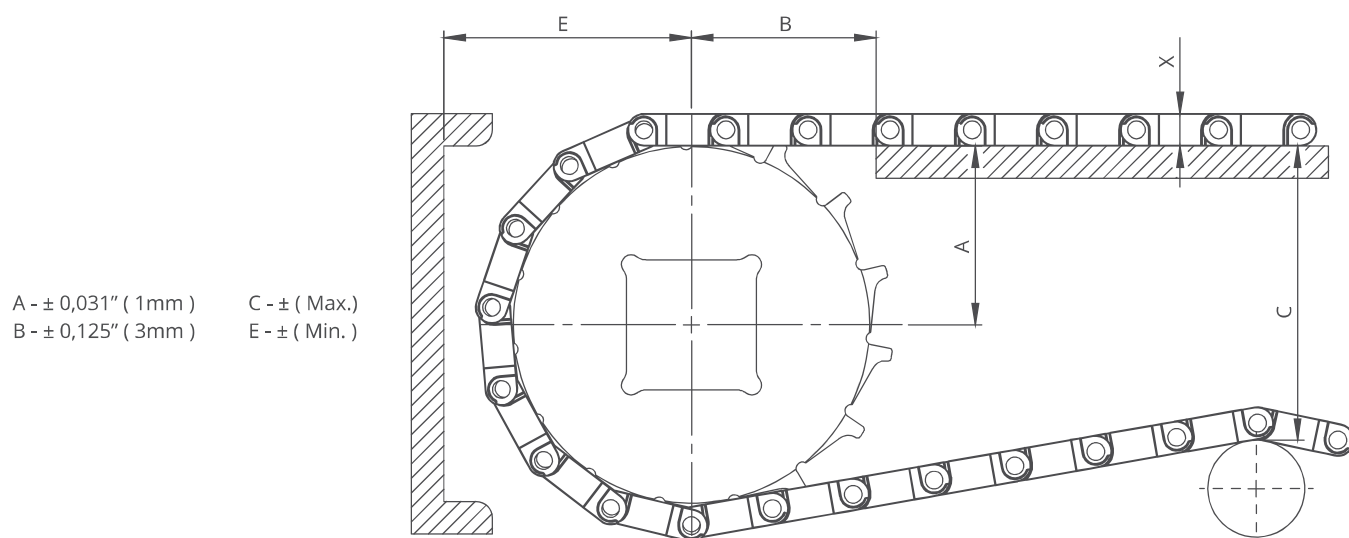
## MD254 Series / Flight Technical Specifications

Possible Flight Indents for MD254 Series	Z	
	mm	inch
Standard, no module cutting	33,5	<b>1.32</b>
Standard, no module cutting	50,0	<b>1.97</b>
Standard, module cutting	83,5	<b>3.29</b>
Standard, no module cutting	100,0	<b>3.94</b>

\*Non-standard flight indent is on request.



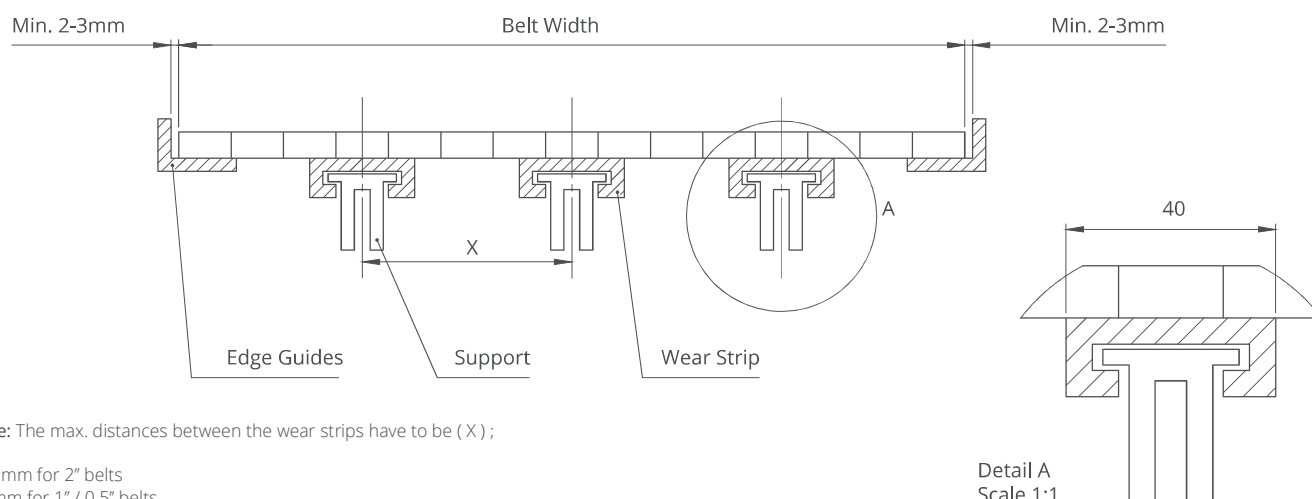
# MD254 Series *Engineering Information*



## MD254 Series / Conveyor Frame Dimensions

Sprockets Description			A		B		C		E		X	
Pitch Diameter		No.Teeth	Range (Bottom to Top)		inch	mm	inch	mm	inch	mm	inch	mm
inch	mm		inch	mm								
MD254 FG, MD254 C												
2.38	60,5	8	1.15	29,2	1.55	39,4	1.95	49,5	1.94	49,2	0.39	10,0
3.07	78,0	10	1.46	37,1	1.77	45,0	2.60	66,1	2.25	57,1	0.39	10,0
3.74	95,0	12	1.76	44,8	1.97	50,1	3.24	82,3	2.55	64,8	0.39	10,0
4.70	119,5	15	2.22	56,4	2.23	56,7	4.18	106,1	3.01	76,4	0.39	10,0
5.02	127,5	16	2.37	60,2	2.38	60,5	4.46	113,2	3.21	81,5	0.39	10,0
5.71	145,0	18	2.73	69,3	2.45	62,3	5.19	131,8	3.51	89,3	0.39	10,0
MD254 RR, MD254 GT												
2.38	60,5	8	1.15	29,2	1.55	39,4	1.95	49,5	2.18	55,4	0.64	16,3
3.07	78,0	10	1.46	37,1	1.77	45,0	2.60	66,1	2.48	63,1	0.64	16,3
3.74	95,0	12	1.76	44,8	1.97	50,1	3.24	82,3	2.79	70,9	0.64	16,3
4.70	119,5	15	2.22	56,4	2.23	56,7	4.18	106,1	3.25	82,7	0.64	16,3
5.02	127,5	16	2.37	60,2	2.38	60,5	4.46	113,2	3.46	87,8	0.64	16,3
5.71	145,0	18	2.73	69,3	2.45	62,3	5.19	131,8	3.76	95,5	0.64	16,3

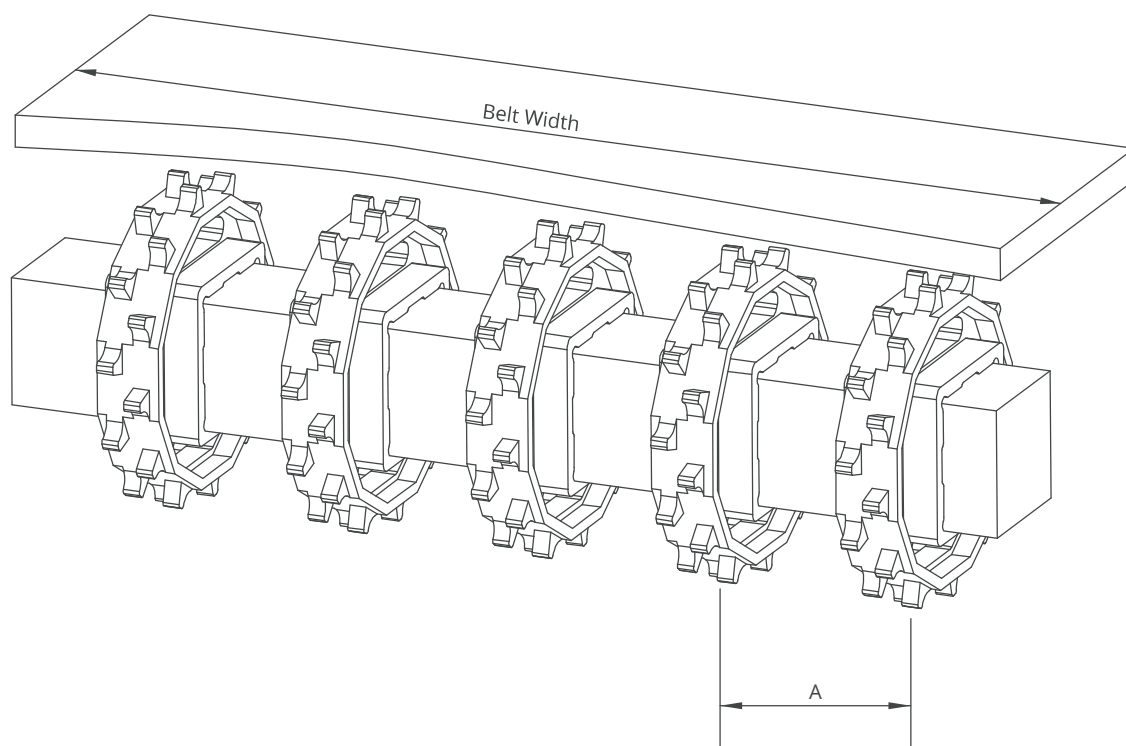
## MD254 Series / Slider Support System For Straight Running Belts



Note: The max. distances between the wear strips have to be ( X );

125 mm for 2" belts  
 80 mm for 1" / 0.5" belts

# MD254 Series *Engineering Information*



## MD254 Series / Sprockets Arrangement

Standard Belt Width		Number of sprockets per shaft		A (mm/inch)	
mm	inch	Drive Shaft	Return Shaft	Min.	Max.
150,0	<b>6.0</b>	2	2	50/2	120/ <b>4.7</b>
200,0	<b>8.0</b>	2	2	50/2	120/ <b>4.7</b>
250,0	<b>10.0</b>	3	2	50/2	120/ <b>4.7</b>
300,0	<b>12.0</b>	3	2	50/2	120/ <b>4.7</b>
350,0	<b>14.0</b>	3	3	50/2	120/ <b>4.7</b>
400,0	<b>16.0</b>	4	3	50/2	120/ <b>4.7</b>
450,0	<b>18.0</b>	4	3	50/2	120/ <b>4.7</b>
500,0	<b>20.0</b>	5	4	50/2	120/ <b>4.7</b>
550,0	<b>22.0</b>	5	4	50/2	120/ <b>4.7</b>
600,0	<b>24.0</b>	6	5	50/2	120/ <b>4.7</b>
700,0	<b>26.0</b>	7	5	50/2	120/ <b>4.7</b>
800,0	<b>28.0</b>	8	6	50/2	120/ <b>4.7</b>
900,0	<b>30.0</b>	9	7	50/2	120/ <b>4.7</b>
1000,0	<b>32.0</b>	10	7	50/2	120/ <b>4.7</b>

**Note:** Number of sprockets depends on the belt load.



# ***MD254 GAP%48***

***Modular Belt Serie***

***MD254 GAP%48***

***Sprockets & Accessories***

***Engineering Information***











# MD254 GAP%48

## Modular Belt Serie

- **Bakery Applications**

*Including Oven Infeed - Outfeed, Coating Lines, Glazing Lines, Freezing Lines, Conditioning Lines, Cooling Lines*

- **Poultry Applications**

*Cooling and Freezing Lines*

- **Seafood Applications**

*Including Breeding Machines, Draining Lines*

- **Snack Food Applications**

*Including Proofer Lines, Boiler Infeed, Oven Infeed - Outfeed, Cooling Lines*

- **Fruits and Vegetables Applications**

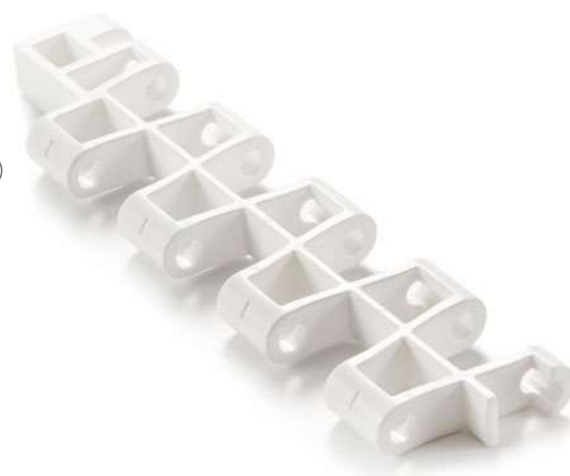
*Including Prewashing / Rinsing, Draining*

- **Packing Industry**

*Shrink Tunnels*

# MD254 GAP%48

Pitch:	25,7 mm / <b>1 inch</b>
Belt Surface:	Open, Smooth Surface
Minimum Width:	203,2 mm / <b>8 inch</b>
Open Area (%):	48%. ( Biggest opening 9 x 13,5 mm and 6 x 16,5 mm )
Flight:	Yes ( T50 )
Sidewall:	No
Rod:	Ø5 mm / <b>0.197 inch</b> - Self Lock
Approved:	FDA and EU
Curve:	No
Color:	Additional colors available
Cleanability:	Excellent
Belt Thickness:	11 mm / <b>0.433 inch</b>



## Product Features and Functional Benefits

- Belt provides optimal open area for drainage and airflow.
- Less friction and product contact for easy cooking, cooling and freezing of products.
- Reduced dirt and oxide build due to self cleaning surface.
- Stainless steel pins option for high temperature applications.
- Easy to clean reduces downtime for cleaning time 70%.
- Stainless steel pins option reduce belt elongation for high temperature application.

## Available Moulded Module Sizes

- 152,4 mm / **6 inch** module
- 85 mm / **3.35 inch** module

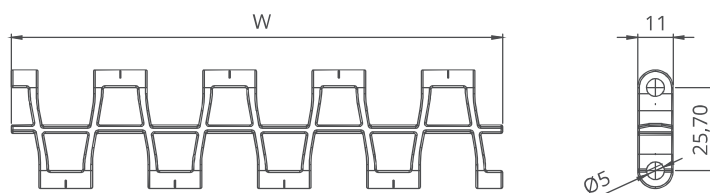
## MD254 GAP%48 / Technical Information

BELT MATERIAL	BELT STRENGTH				TEMPERATURE		BELT WEIGHT
	Straight		Curve		°C / °F (min.)	°C / °F (max.)	Kg/m² / lb/ft²
	N/m	lb/ft	N/m	lb/ft			
Polypropylene	12100	<b>829</b>	-	-	+5 / <b>+41</b>	+90 / <b>+194</b>	4,2 / <b>0.85</b>
Polyethylene	-	-	-	-	-	-	-
Acetal	17050	<b>1168</b>	-	-	-43 / <b>-45.4</b>	+110 / <b>+230</b>	6,4 / <b>1.33</b>

- Belt strength and temperature values are maximum on the table.

## MD254 GAP%48 / Standard Belt Widths

BELT SERIES	WIDTH (W)				Belt With Tolerance (max.)
	PP		POM		
	mm	inch	mm	inch	
MD254GAP48	203,2	8.0	203,2	8.0	± 0,5 mm
MD254GAP48	237,0	9.0	237,0	9.0	± 1 mm
MD254GAP48	270,8	11.0	270,8	11.0	± 1 mm
MD254GAP48	304,6	12.0	304,6	12.0	± 1 mm
MD254GAP48	338,4	13.0	338,4	13.0	± 2 mm
MD254GAP48	372,2	15.0	372,2	15.0	± 2 mm
MD254GAP48	406,0	16.0	406,0	16.0	± 2 mm
MD254GAP48	439,8	17.0	439,8	17.0	± 2 mm
MD254GAP48	473,6	19.0	473,6	19.0	± 2 mm
MD254GAP48	507,4	20.0	507,4	20.0	± 2 mm
MD254GAP48	541,2	21.0	541,2	21.0	± 2 mm
MD254GAP48	575,0	23.0	575,0	23.0	± 2 mm
MD254GAP48	608,8	24.0	608,8	24.0	± 3 mm
MD254GAP48	642,6	25.0	642,6	25.0	± 3 mm



- Bigger sizes are available with 33,8 mm increments.
- Please contact with customer service for precise belt measurements.



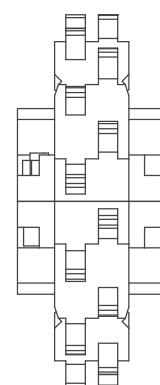
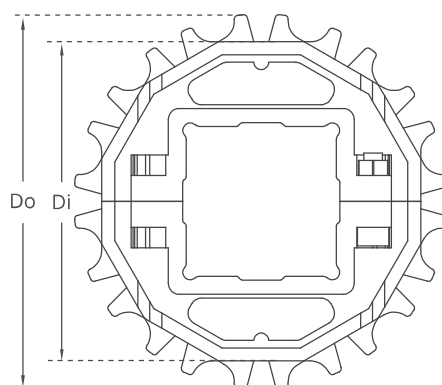
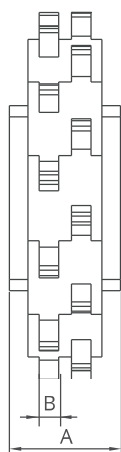
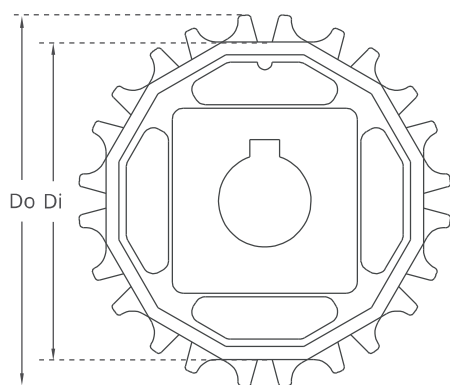
# MD254 GAP%48 Serie *Sprockets and Technical Specifications*



Z15



Z28



Split moulded sprockets are available.

## MD254 GAP%48 Serie / Standard Sprockets Dimensions

NO. TEETH	Di mm/inch	Do mm/inch	B mm/inch	A mm/inch	Square Bore (Q) mm/inch	Round Bore (R) mm/inch	PRODUCT CODE	
							Square Type (Q)	Round Type (R)
Z8	52,0 / <b>2.05</b>	67,0 / <b>2.64</b>	6 / <b>0.24</b>	30 / <b>1.18</b>	25 / <b>1</b>	25 / <b>1</b>	MD-TR254SQ25Z8*POM	MD-TR254SRZ8*POM
Z10	69,0 / <b>2.72</b>	84,0 / <b>3.31</b>	6 / <b>0.24</b>	30 / <b>1.18</b>	40 / <b>1.5</b>	25-30 / <b>1-1.25</b>	MD-TR254SQZ10*POM	MD-TR254SRZ10*POM
Z12	85,8 / <b>3.38</b>	100,8 / <b>3.97</b>	6 / <b>0.24</b>	30 / <b>1.18</b>	40 / <b>1.5</b>	25-30 / <b>1-1.25</b>	MD-TR254SQZ12*POM	MD-TR254SRZ12*POM
Z15	110,8 / <b>4.36</b>	125,8 / <b>4.95</b>	6 / <b>0.24</b>	30 / <b>1.18</b>	40 / <b>1.5</b>	25-30 / <b>1-1.25</b>	MD-TR254SQZ15*POM	MD-TR254SRZ15*POM
Z16	119,1 / <b>4.69</b>	134,1 / <b>5.28</b>	6 / <b>0.24</b>	30 / <b>1.18</b>	40 / <b>1.5</b>	25-30 / <b>1-1.25</b>	MD-TR254SQZ16*POM	MD-TR254SRZ16*POM
Z18	135,6 / <b>5.34</b>	150,6 / <b>5.93</b>	6 / <b>0.24</b>	30 / <b>1.18</b>	40 / <b>1.5</b>	25-30 / <b>1-1.25</b>	MD-TR254SQZ18*POM	MD-TR254SRZ18*POM
Z20	150,7 / <b>5.93</b>	167,3 / <b>6.59</b>	6 / <b>0.24</b>	30 / <b>1.18</b>	40 / <b>1.5</b>	25-30 / <b>1-1.25</b>	MD-TR254SQZ20*POM	MD-TR254SRZ20*POM

\*Other sprockets and hub sizes are manufactured up to request. \*PA (Polyamide) and PP (Polypropylene) sprockets raw material is available on request.

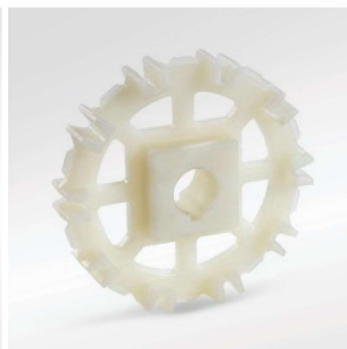
**\*Machined Split Sprockets are available for each size.**



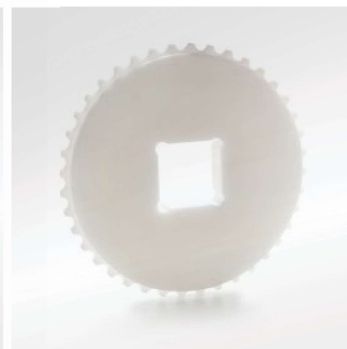
Clamp



Machined Split Sprocket



Moulded Sprocket



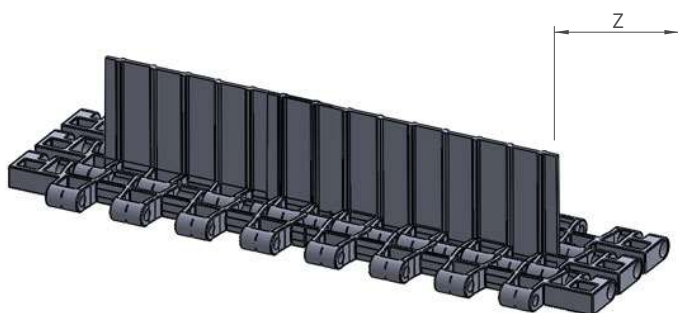
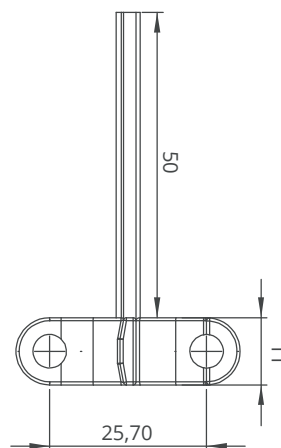
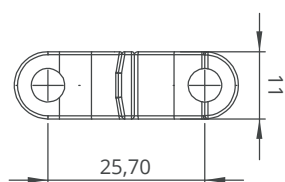
Machined Sprocket

# MD254 GAP%48 Serie *Engineering Information*



## MD254 GAP%48 Serie / Flight Dimensions

MD254 GAP%48 Serie / Flights				
PRODUCT CODE	Flight Height (mm/ <i>inch</i> )	Flight Width (mm/ <i>inch</i> )	PRODUCT CODE	Sidewall Height (mm/ <i>inch</i> )
MD254G48T50	50 / <b>2</b>	152 / <b>6</b>	-	-



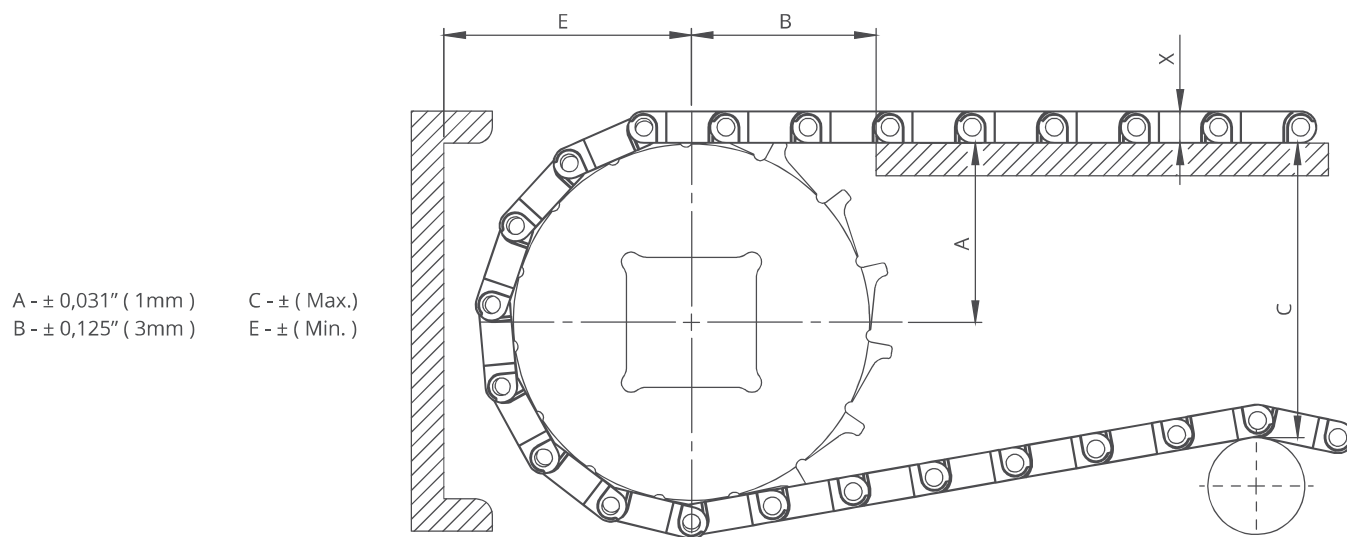
## MD254 GAP%48 Serie / Flight Technical Specifications

Possible Flight Indents for MD254GAP%48 Serie	Z	
	mm	inch
Standard, no module cutting	35,0	<b>1.38</b>
Standard, module cutting	68,8	<b>2.71</b>
Standard, module cutting	102,6	<b>4.04</b>

\*Non-standard Hight indent is on request.



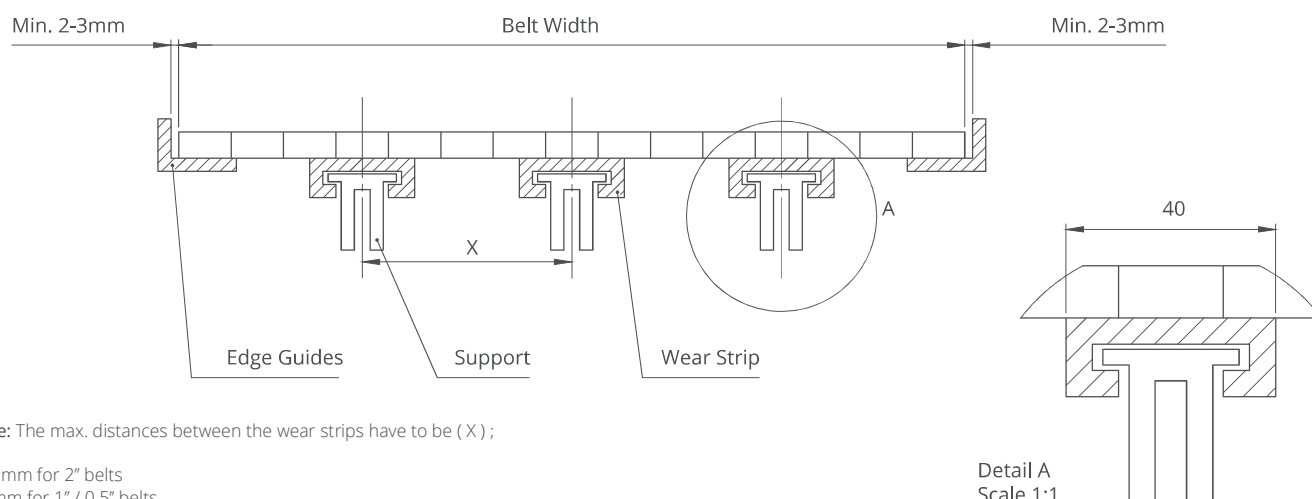
# MD254 GAP%48 Serie *Engineering Information*



## MD254 GAP%48 Serie / Conveyor Frame Dimensions

Sprockets Description			A		B		C		E		X	
Pitch Diameter		No.Teeth	Range (Bottom to Top)		inch	mm	inch	mm	inch	mm	inch	mm
inch	mm		inch	mm								
MD254 GAP%48												
2.38	60,5	8	1.15	29,2	1.55	39,4	1.95	49,5	1.94	49,2	0.43	11,0
3.07	78,0	10	1.46	37,1	1.77	45,0	2.60	66,1	2.25	57,1	0.43	11,0
3.74	95,0	12	1.76	44,8	1.97	50,1	3.24	82,3	2.55	64,8	0.43	11,0
4.70	119,5	15	2.22	56,4	2.23	56,7	4.18	106,1	3.01	76,4	0.43	11,0
5.02	127,5	16	2.37	60,2	2.38	60,5	4.46	113,2	3.21	81,5	0.43	11,0
5.71	145,0	18	2.73	69,3	2.45	62,3	5.19	131,8	3.51	89,3	0.43	11,0

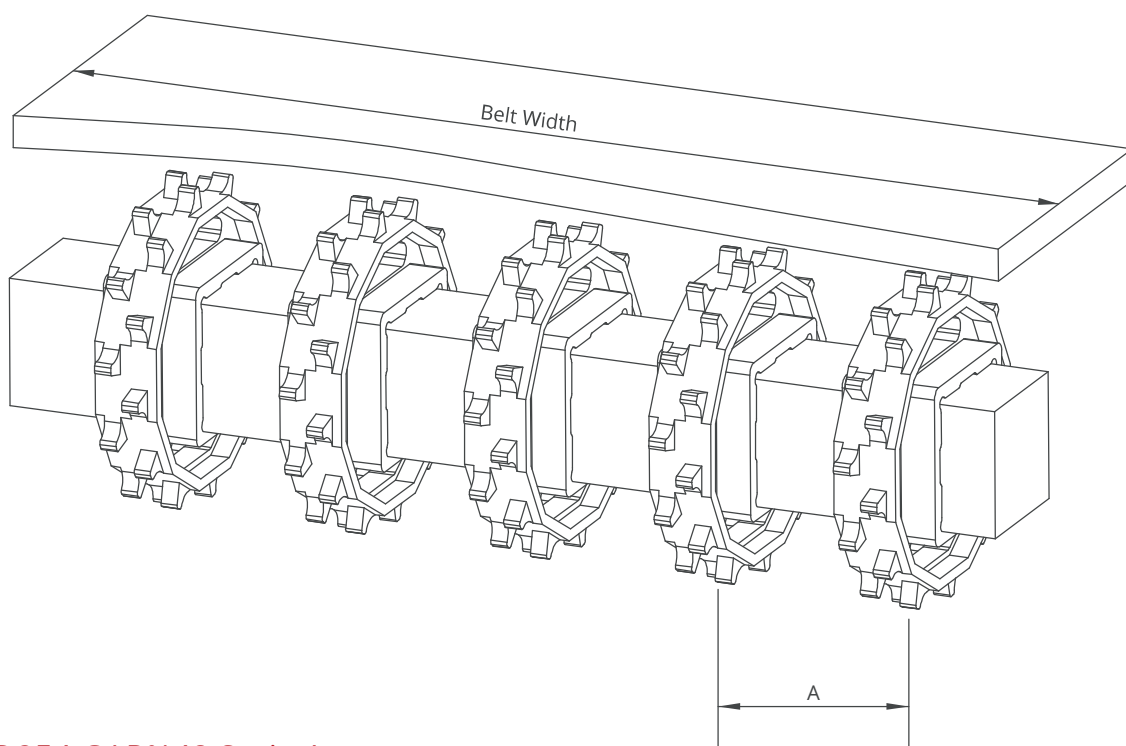
## MD254 GAP%48 Series / Slider Support System For Straight Running Belts



**Note:** The max. distances between the wear strips have to be ( X ) ;

125 mm for 2" belts  
80 mm for 1" / 0.5" belts

# MD254 GAP%48 Serie *Engineering Information*



MD254 GAP%48 Serie / Sprockets Arrangement

Standard Belt Width		Number of sprockets per shaft		A (mm/inch)	
mm	inch	Drive Shaft	Return Shaft	Min.	Max.
203,2	<b>8.0</b>	2	2	60/ <b>2.36</b>	170/ <b>6.6</b>
237,0	<b>9.3</b>	2	2	60/ <b>2.36</b>	170/ <b>6.6</b>
270,8	<b>10.7</b>	2	2	60/ <b>2.36</b>	170/ <b>6.6</b>
304,6	<b>12.0</b>	3	2	60/ <b>2.36</b>	170/ <b>6.6</b>
338,4	<b>13.3</b>	3	2	60/ <b>2.36</b>	170/ <b>6.6</b>
372,2	<b>14.7</b>	4	3	60/ <b>2.36</b>	170/ <b>6.6</b>
406,0	<b>16.0</b>	4	3	60/ <b>2.36</b>	170/ <b>6.6</b>
439,8	<b>17.3</b>	4	3	60/ <b>2.36</b>	170/ <b>6.6</b>
473,6	<b>18.6</b>	5	3	60/ <b>2.36</b>	170/ <b>6.6</b>
507,4	<b>20.0</b>	5	3	60/ <b>2.36</b>	170/ <b>6.6</b>
541,2	<b>21.3</b>	5	3	60/ <b>2.36</b>	170/ <b>6.6</b>
575,0	<b>22.6</b>	5	3	60/ <b>2.36</b>	170/ <b>6.6</b>
608,8	<b>24.0</b>	6	4	60/ <b>2.36</b>	170/ <b>6.6</b>
642,6	<b>25.3</b>	6	4	60/ <b>2.36</b>	170/ <b>6.6</b>
676,4	<b>26.6</b>	6	4	60/ <b>2.36</b>	170/ <b>6.6</b>
710,2	<b>28.0</b>	7	4	60/ <b>2.36</b>	170/ <b>6.6</b>
744,0	<b>29.3</b>	7	4	60/ <b>2.36</b>	170/ <b>6.6</b>
777,8	<b>30.6</b>	7	4	60/ <b>2.36</b>	170/ <b>6.6</b>
811,6	<b>32.0</b>	7	4	60/ <b>2.36</b>	170/ <b>6.6</b>
845,4	<b>33.3</b>	8	4	60/ <b>2.36</b>	170/ <b>6.6</b>
879,2	<b>34.6</b>	8	5	60/ <b>2.36</b>	170/ <b>6.6</b>
913,0	<b>35.9</b>	8	5	60/ <b>2.36</b>	170/ <b>6.6</b>
946,8	<b>37.3</b>	8	5	60/ <b>2.36</b>	170/ <b>6.6</b>
980,6	<b>38.6</b>	8	5	60/ <b>2.36</b>	170/ <b>6.6</b>
1014,4	<b>39.9</b>	9	5	60/ <b>2.36</b>	170/ <b>6.6</b>
1048,2	<b>41.3</b>	9	5	60/ <b>2.36</b>	170/ <b>6.6</b>

Note: Number of sprockets depends on the belt load.